



Equity and Environmental Protection in Transit-Oriented Communities: *Local Approaches*



9th Annual New Partners for Smart Growth
Friday, February 5, 2010

Anna Markee, *Housing Development
Consortium*

Dan Stroh, *City of Bellevue*

Don Vehige, *GGLO*

Peter Huffman, *City of Tacoma*

Sara Nikolic, *Futurewise*



Session Overview

Planning and environmental context

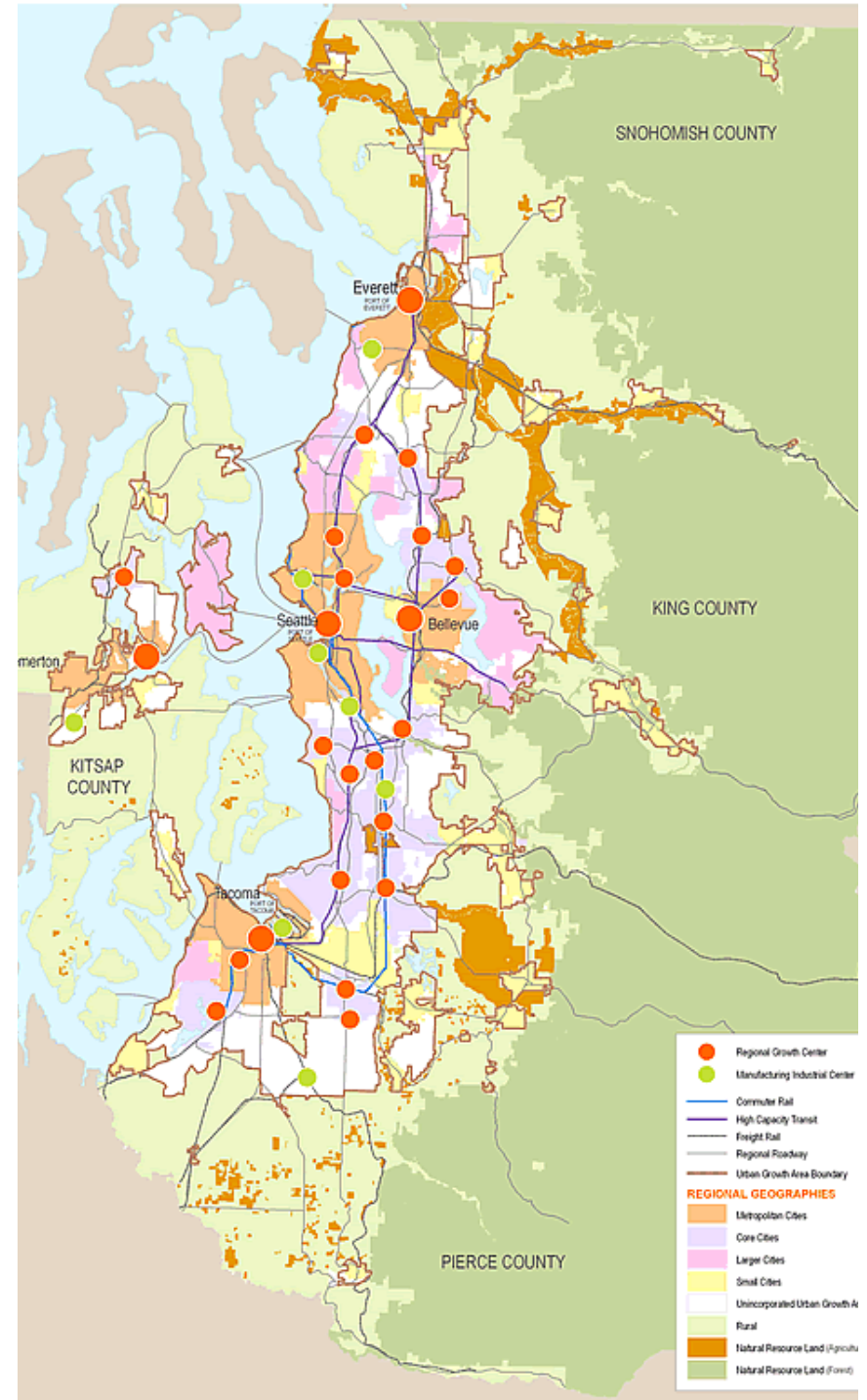
Affordable housing needs

Case Studies on Station Area Planning:
*Balancing Equity, Environmental
Protection and Economic Development*

City of Bellevue: The Bel-Red Corridor

City of Seattle: Light Rail Station Areas

City of Tacoma: Mixed-Use Centers



Context

Washington State Growth Management Act Goals (of 13)

- 1) Urban Growth. Encourage development in urban areas...
- 2) Reduce sprawl. Reduce the inappropriate conversion of undeveloped land into sprawling, low-density development.
- 4) Housing. Encourage the availability of affordable housing to all economic segments of the population...
- 10) Environment. Protect the environment and enhance the state's high quality of life...

Four-County Central Puget Sound Region 2000-2040

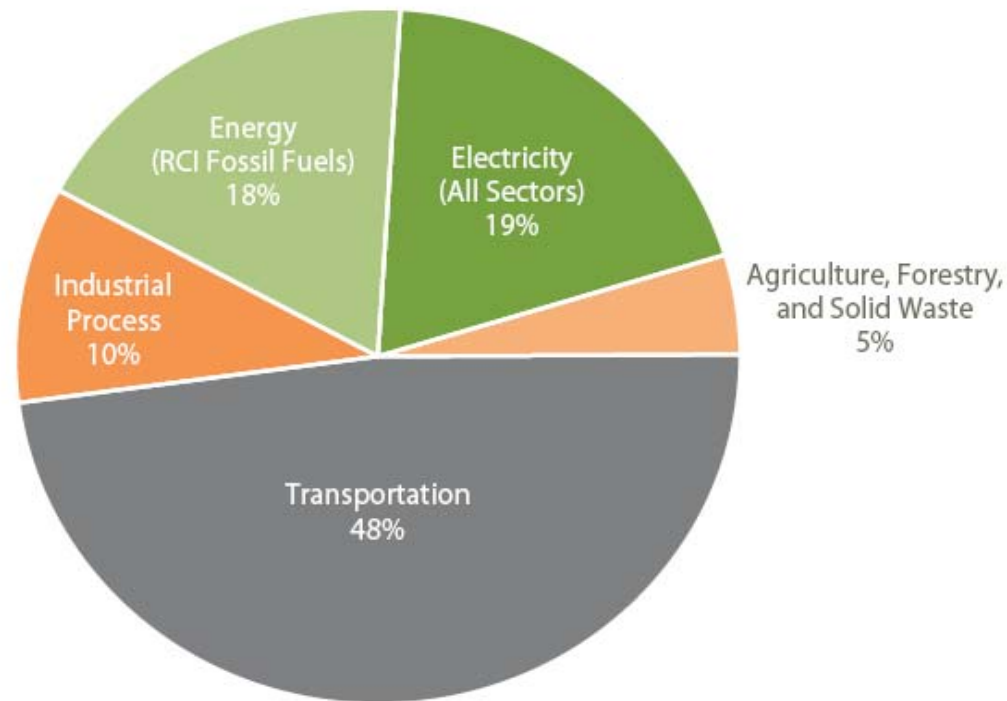
1.7 million new people ($\Delta = +34\%$)

1.2 million new jobs ($\Delta = +39\%$)

Environment Challenge: Reduce GHG Emissions

Sources of Greenhouse Gas Emissions in the Central Puget Sound Region

Source: Puget Sound Clean Air Agency (2000)



Note:
Industrial Process and Energy (RCI) sectors are combined
in baseline projections above as Buildings and Facilities.

State will reduce GHG to 50% 1990 levels by 2050

Environment Challenge: Restore Puget Sound



Puget Sound Action Agenda promotes compact urban development to reduce overall urban impervious cover and prevent conversion of natural and resource lands.



Key land-use strategy: Subarea planning to encourage high-performing transit-oriented communities around growing local and regional transit networks

Transit-Oriented Communities: *A Blueprint for Washington State*

Download the report: www.futurewise.org/toc

For more information, contact Sara Nikolic at sara@futurewise.org

