



USFS Tools of the Trust

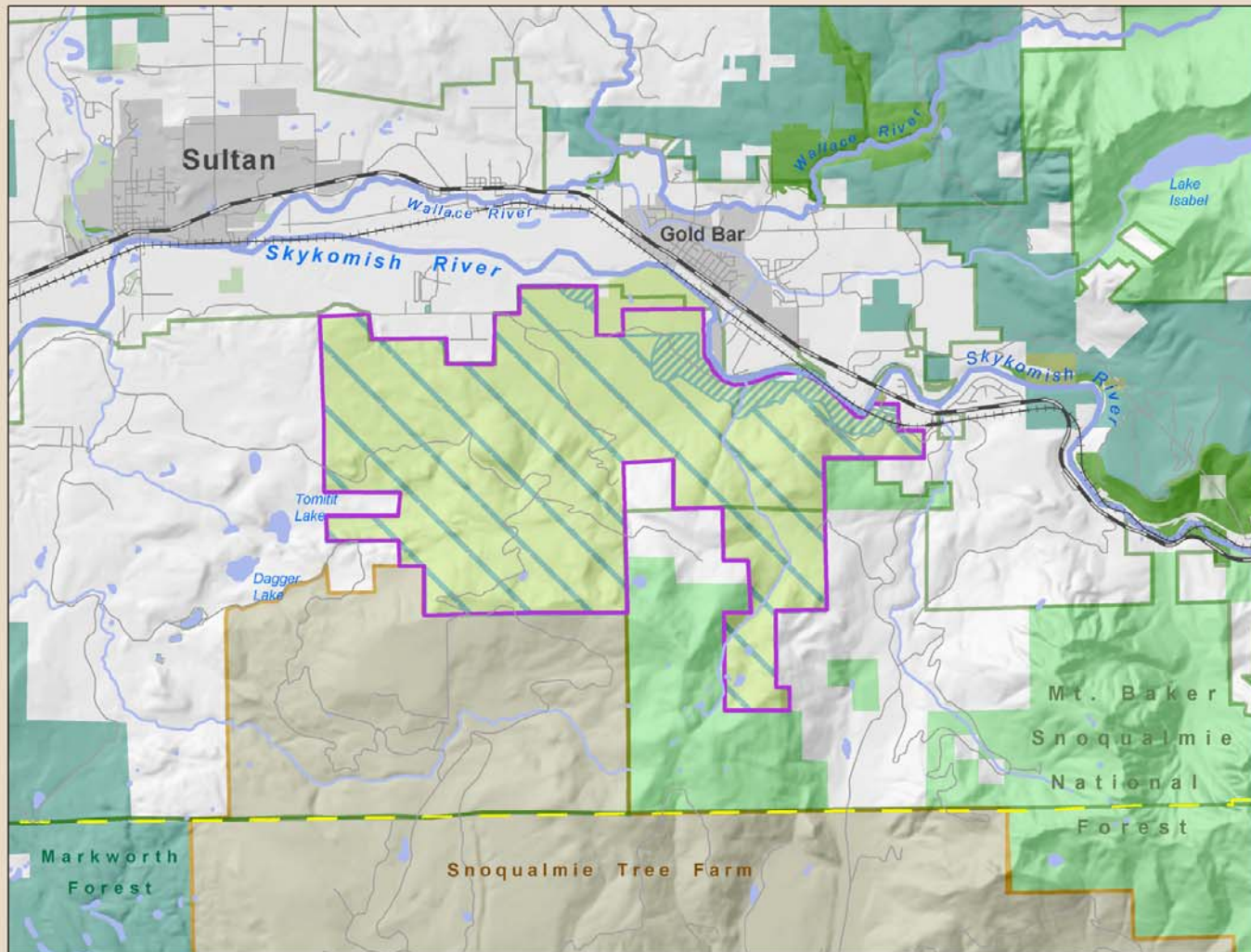
Cascade Land Conservancy and US Forest Service Programs



Forest Legacy Success



Skykomish Timber Forest Project



- Forest Legacy Project Area
- Forest Legacy Conservation Easement
- Conservation Easement River Buffers
- National Forest
- State Wildlife and Conservation Areas
- State Parks
- Other State Lands
- County & Municipal Parks
- Private Conservation Lands
- Hancock Timber
- Other Private Lands
- Forest Production Zone
- Cities
- County Boundary
- Highways
- Secondary Roads
- Railroad
- Rivers and Streams
- Lakes



Cartography by
www.commenspace.org
November 7, 2003

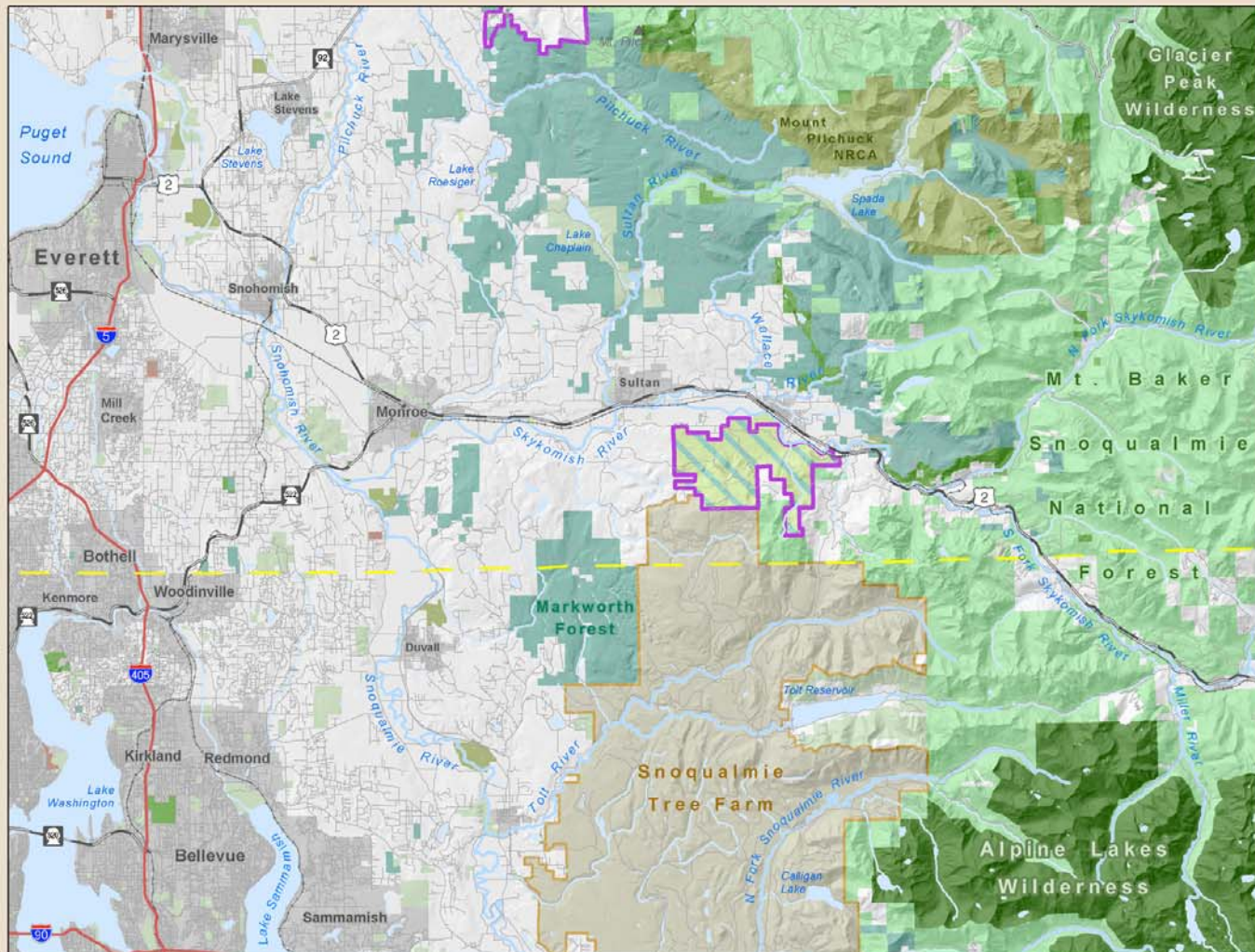




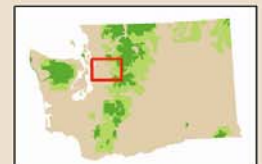
Landscape Context



Forest Conservation in the Lower Skykomish River Basin



Cartography by
www.commenspace.org
November 7, 2003

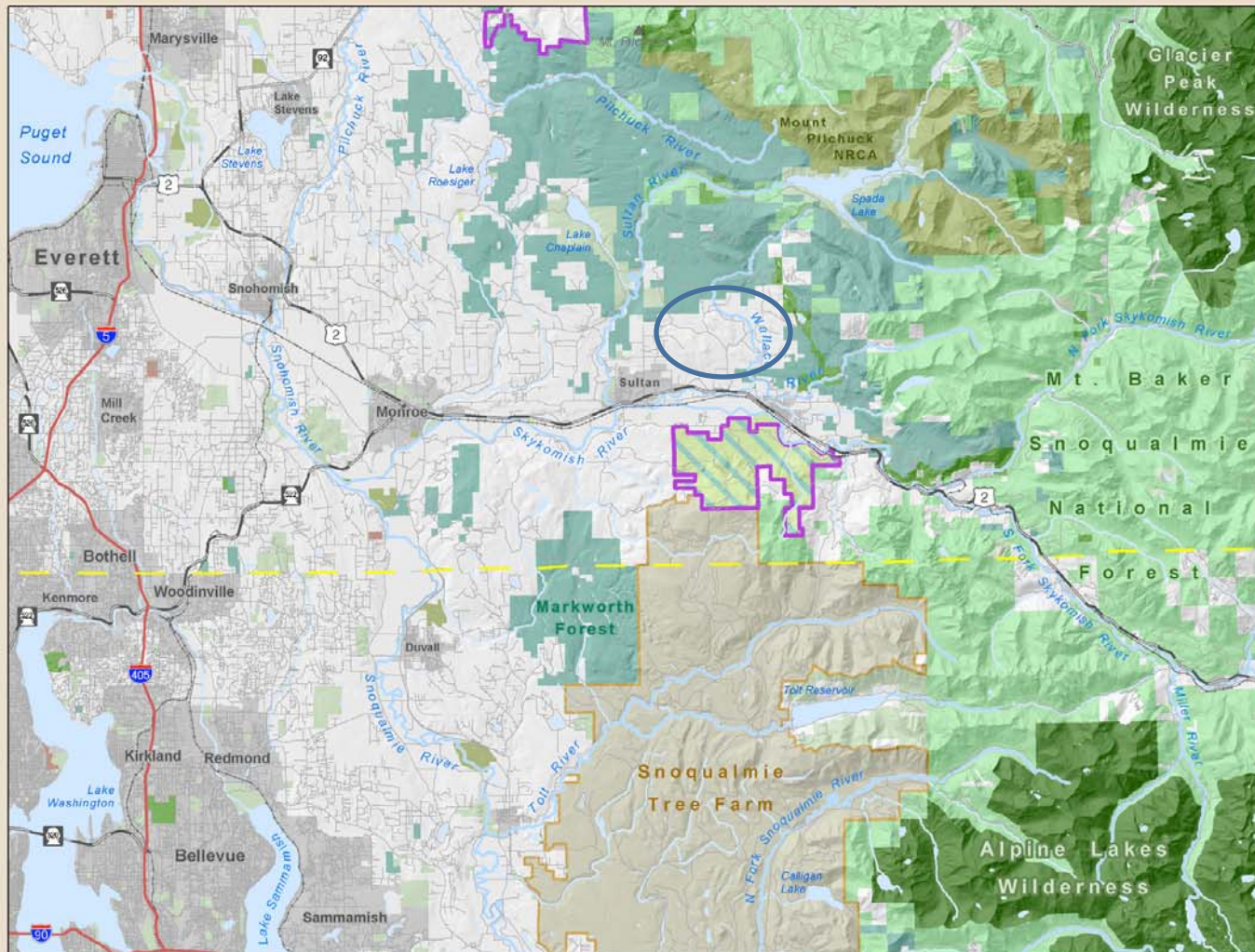




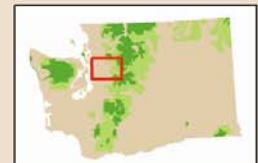
Landscape Context – and Future Project



Forest Conservation in the Lower Skykomish River Basin



Cartography by
www.commenspace.org
November 7, 2003

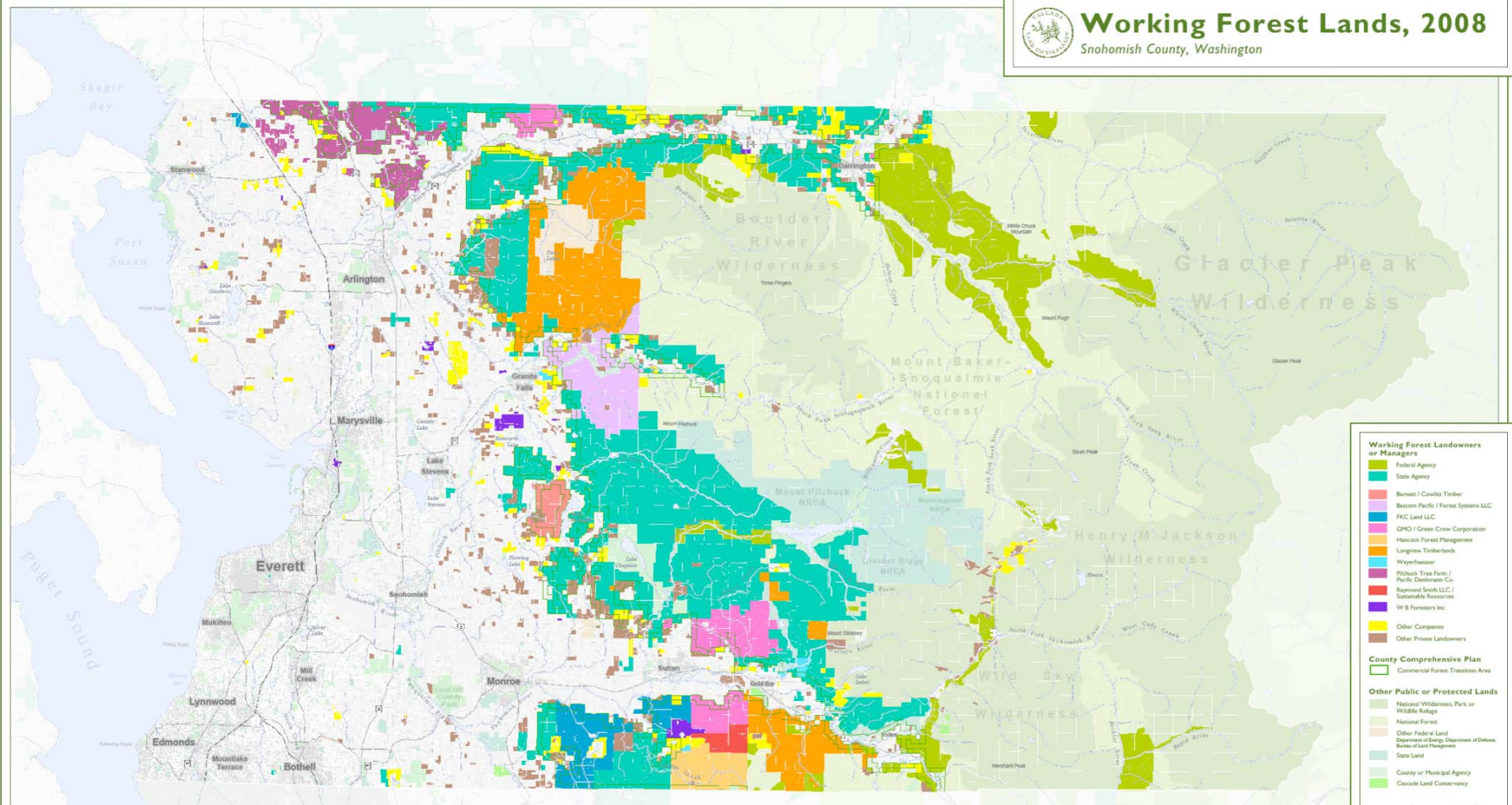




Current Forest Ownerships



Working Forest Lands, 2008 Snohomish County, Washington



Working Forest Landowners or Managers

- Federal Agency
- State Agency
- Barlett / Cowi Timber
- Bionini Pacific / Forest Systems LLC
- PKC Land LLC
- GNO / Green Crow Corporation
- Hancock Forest Management
- Longview Timberlands
- Weyerhaeuser
- Pilchuck Tree Farms / Pacific Distillers Co.
- Raymond Smith LLC / Sustainable Resources
- W & B Foresters Inc.
- Other Companies
- Other Private Landowners

County Comprehensive Plan

- Commercial Forest Transition Area

Other Public or Protected Lands

- National Wilderness, Park or Wildlife Refuge
- National Forest
- Other Federal Land
- Department of Ecology Department of Defense, Bureau of Land Management
- State Land
- County or Municipal Agency
- Cascade Land Conservancy

Working forest lands were derived from December 2008 Snohomish County tax parcel data in conjunction with a variety of additional datasets. In assembling this database, the attempt was made to aggregate into a single ownership entity private individual as well as corporate landowners that appeared to be in some way related. As a result, the owner of record for a given parcel may differ from the landowner name shown on this map.

Federal working forest lands include those portions of parcels owned by the US Forest Service that fall within lands designated as 'Available' according to the Northwest Forest Plan.

State working forest lands include parcels owned by state agencies that are designated as Trust Forest Lands by the DNR cadastre dataset.

Private working forest lands include parcels enrolled in Snohomish County Timberlands or Forest Lands Current Use Taxation programs, parcels owned by known timber companies, and parcels identified by the County Assessor as appearing to support timber management activities.

All other public lands shown on this map are derived from the Central Puget Sound Protected Lands Database (2007) maintained by Cascade Land Conservancy.

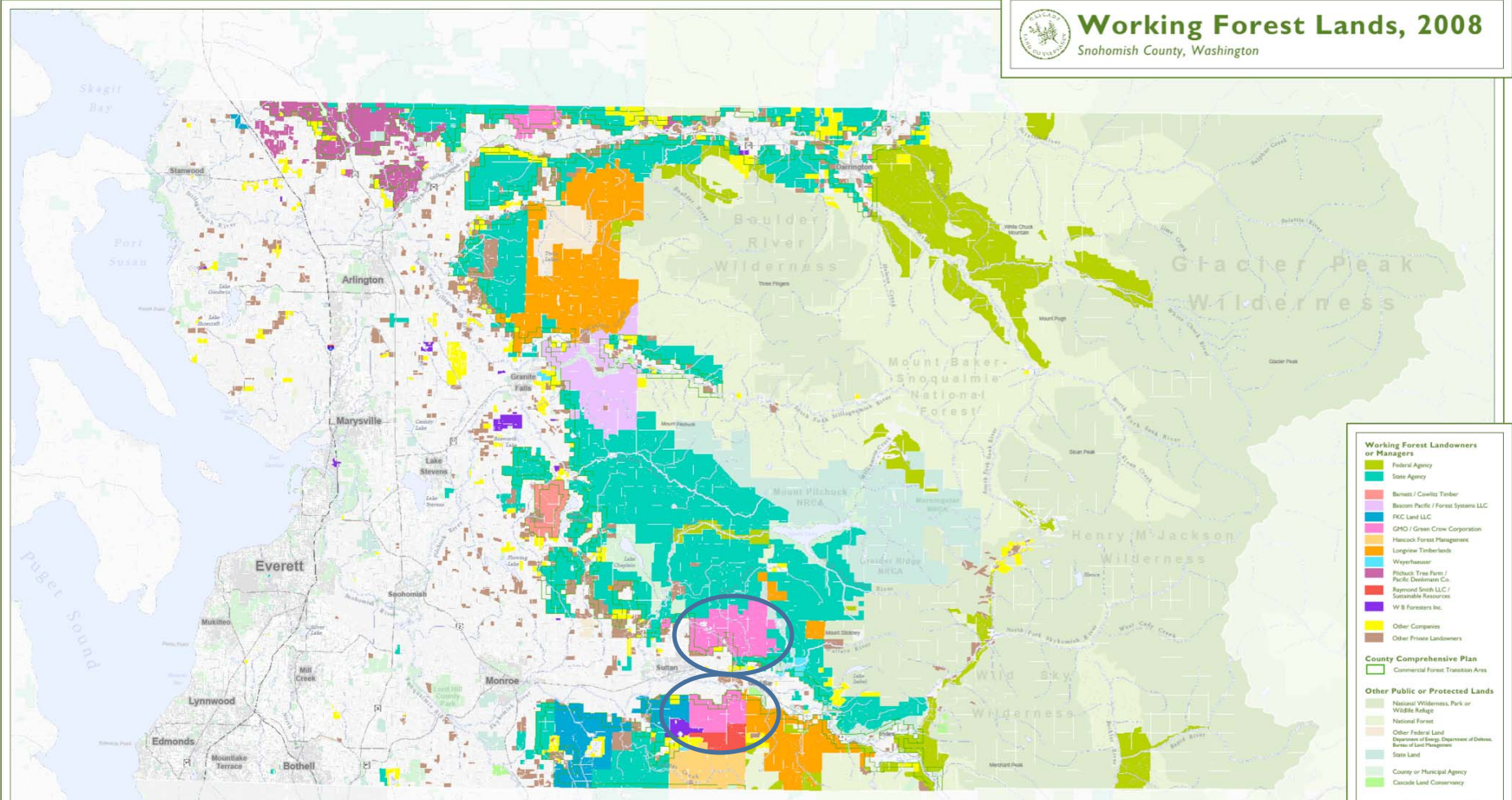
Map and Analysis By
Cascade Land Conservancy
May 2009



Current Forest Ownerships as Target Projects



Working Forest Lands, 2008 Snohomish County, Washington



- Working Forest Landowners or Managers**
- Federal Agency
 - State Agency
 - Barlett / Cowi Timber
 - Bassett Pacific / Forest Systems LLC
 - PKC Land LLC
 - GNO / Green Crow Corporation
 - Hancock Forest Management
 - Longview Timberlands
 - Weyerhaeuser
 - Pittock Tree Farms / Pacific Distillers Co.
 - Raymond Smith LLC / Sustainable Resources
 - W & B Foresters Inc.
 - Other Companies
 - Other Private Landowners
- County Comprehensive Plan**
- Commercial Forest Transition Area
- Other Public or Protected Lands**
- National Wilderness, Park or Wildlife Refuge
 - National Forest
 - Other Federal Land
 - Department of Energy, Department of Defense, Bureau of Land Management
 - State Land
 - County or Municipal Agency
 - Cascade Land Conservancy

Working forest lands were derived from December 2008 Snohomish County tax parcel data in conjunction with a variety of additional datasets. In assembling this database, the attempt was made to aggregate into a single ownership entity private individual as well as corporate landowners that appeared to be in some way related. As a result, the owner of record for a given parcel may differ from the landowner name shown on this map.

Federal working forest lands include those portions of parcels owned by the US Forest Service that fall within lands designated as 'Available' according to the Northwest Forest Plan.

State working forest lands include parcels owned by state agencies that are designated as Trust Forest Lands by the DNR cadastre dataset.

Private working forest lands include parcels enrolled in Snohomish County Timberlands or Forest Lands Current Use Taxation programs, parcels owned by known timber companies, and parcels identified by the County Assessor as appearing to support timber management activities.

All other public lands shown on this map are derived from the Central Puget Sound Protected Lands Database (2007) maintained by Cascade Land Conservancy.

Map and Analysis By
Cascade Land Conservancy
May 2009



Cascade Agenda - The Vision

THE CASCADE AGENDA

100 Years Forward

Cascade Land Conservancy brought together 3,500 businesses, community and government leaders to identify the challenges our region faces and lay out a clear path for our future. We developed a bold 100-year action plan – *The Cascade Agenda* – to achieve two goals: **make our cities and towns spectacular** places to live, work and raise our families and **protect nearly 1.3 million acres** of farms, working forests, parks, shorelines and natural lands.

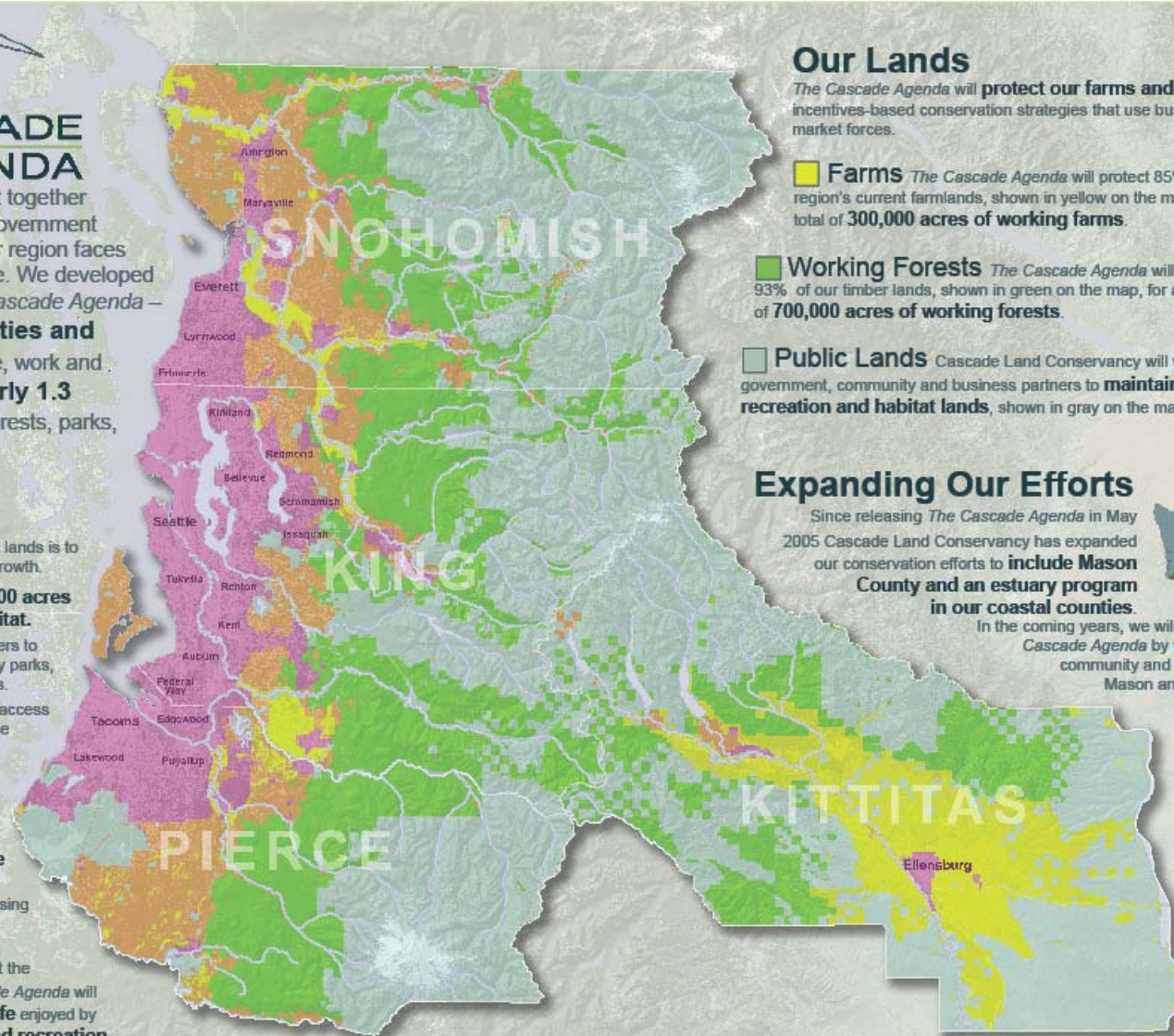
Our Communities

The key to protecting our precious rural and wild lands is to make our cities and towns vibrant magnets for growth.

- *The Cascade Agenda* will **preserve 265,000 acres of parks, shorelines and wildlife habitat.**
- We will collaborate with city and county leaders to make strategic investments in our community parks, plazas and art, culture and education centers.
- We will ensure that all urban residents have access to a park within a half-mile walk of their home and we will create new destination parks in our rural communities.

Urban Communities In the areas shown in magenta on the map, Cascade Land Conservancy and our partners will **ensure that our cities provide amenities that improve our health and happiness** – housing choices, parks and community spaces.

Rural Communities Throughout the areas shown in orange on the map, *The Cascade Agenda* will **protect the rural character and way of life** enjoyed by residents and also **provide new housing and recreation.**



Our Lands

The Cascade Agenda will **protect our farms and forests** with creative incentives-based conservation strategies that use business models and market forces.

Farms *The Cascade Agenda* will protect 85% of our region's current farmlands, shown in yellow on the map, for a total of **300,000 acres of working farms.**



Working Forests *The Cascade Agenda* will protect 93% of our timber lands, shown in green on the map, for a total of **700,000 acres of working forests.**



Public Lands Cascade Land Conservancy will work with our government, community and business partners to **maintain publicly owned recreation and habitat lands**, shown in gray on the map.

Expanding Our Efforts

Since releasing *The Cascade Agenda* in May 2005 Cascade Land Conservancy has expanded our conservation efforts to **include Mason County and an estuary program in our coastal counties.**



In the coming years, we will begin Phase II of *The Cascade Agenda* by working with business, community and government leaders in Mason and other counties to set goals for protecting their lands, economy and communities.



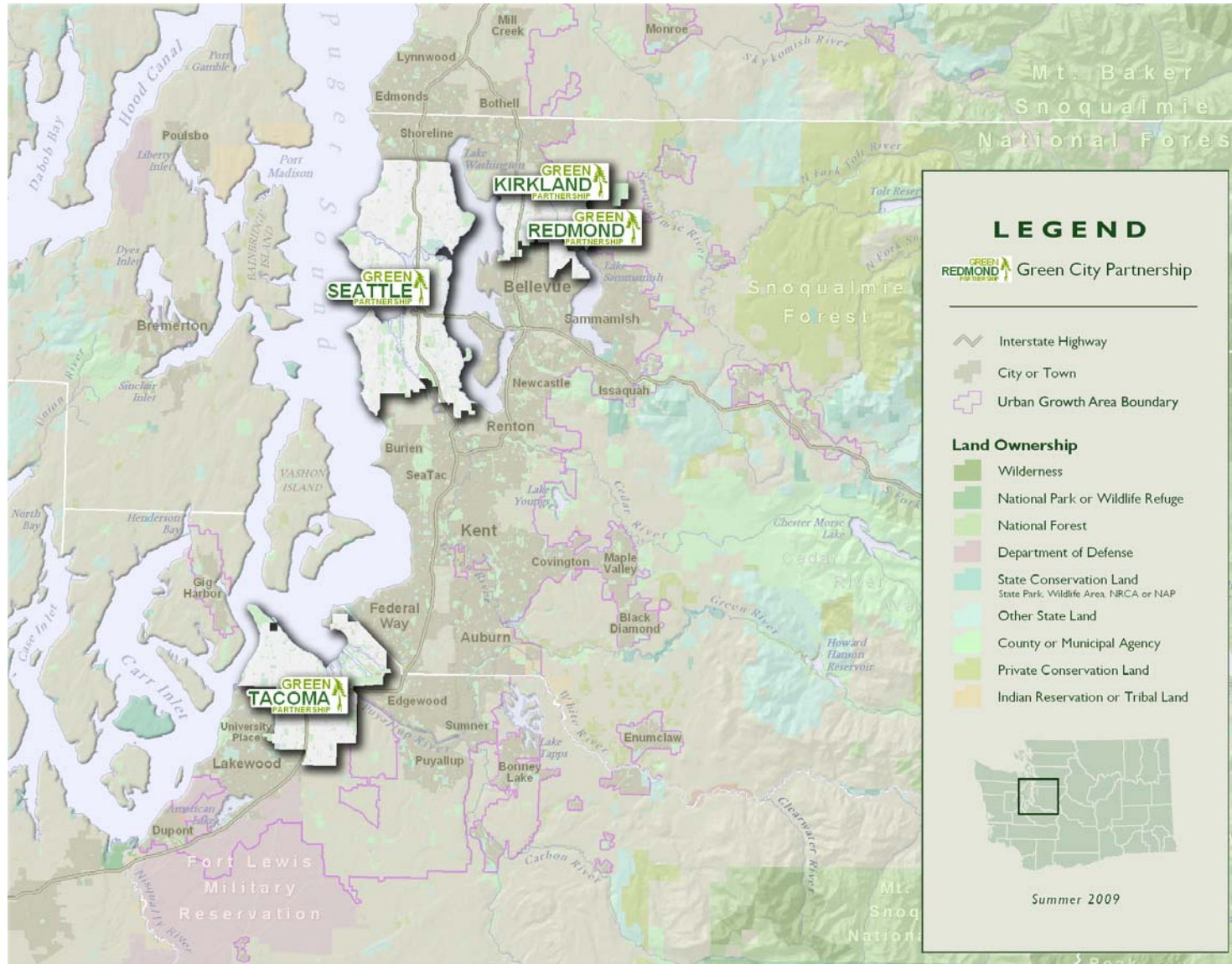


Forest Legacy Helps Fulfill Cascade Agenda



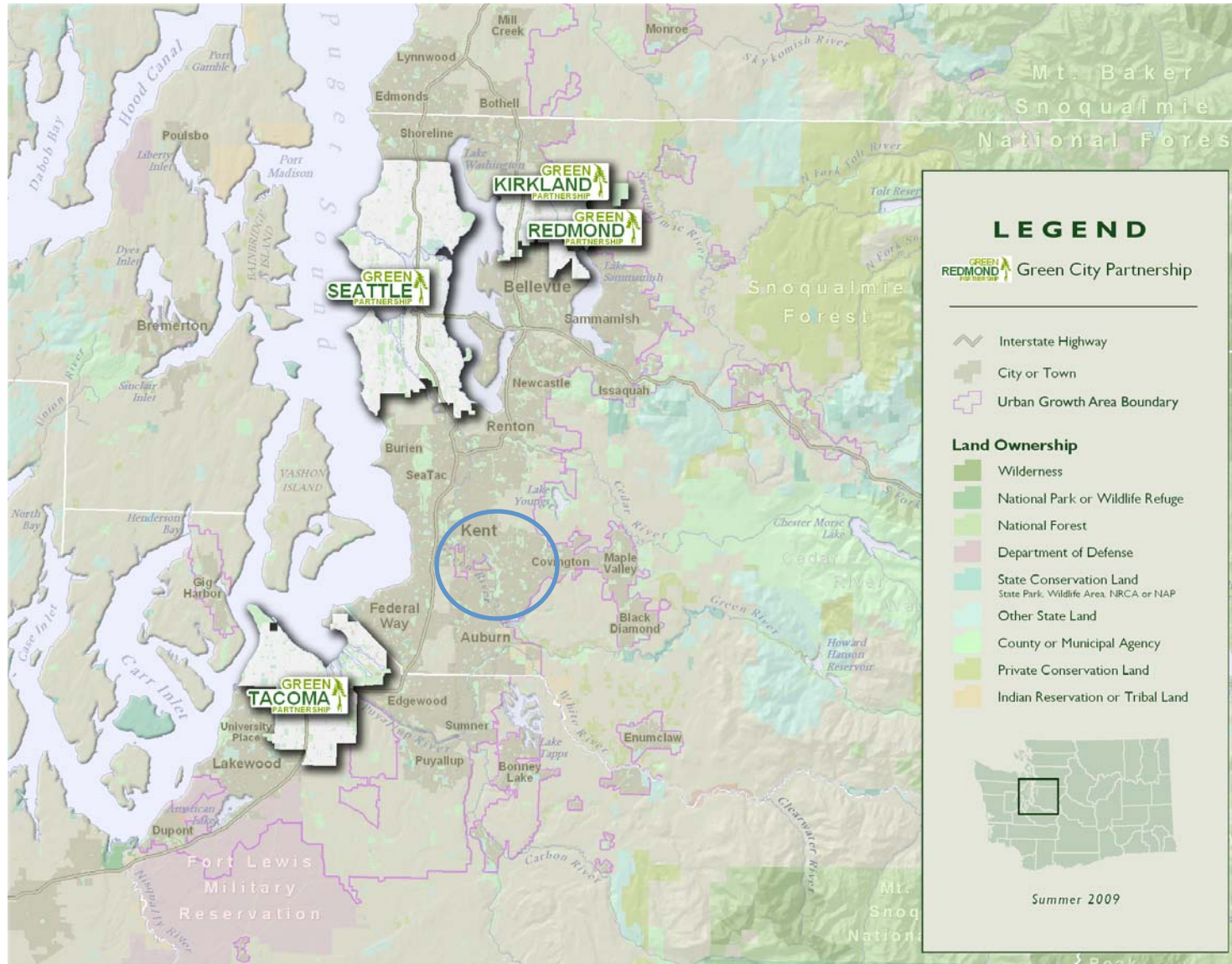


Green City Partnerships: USFS Urban and Community Forestry Program





Green City Partnerships: USFS Urban and Community Forestry Program

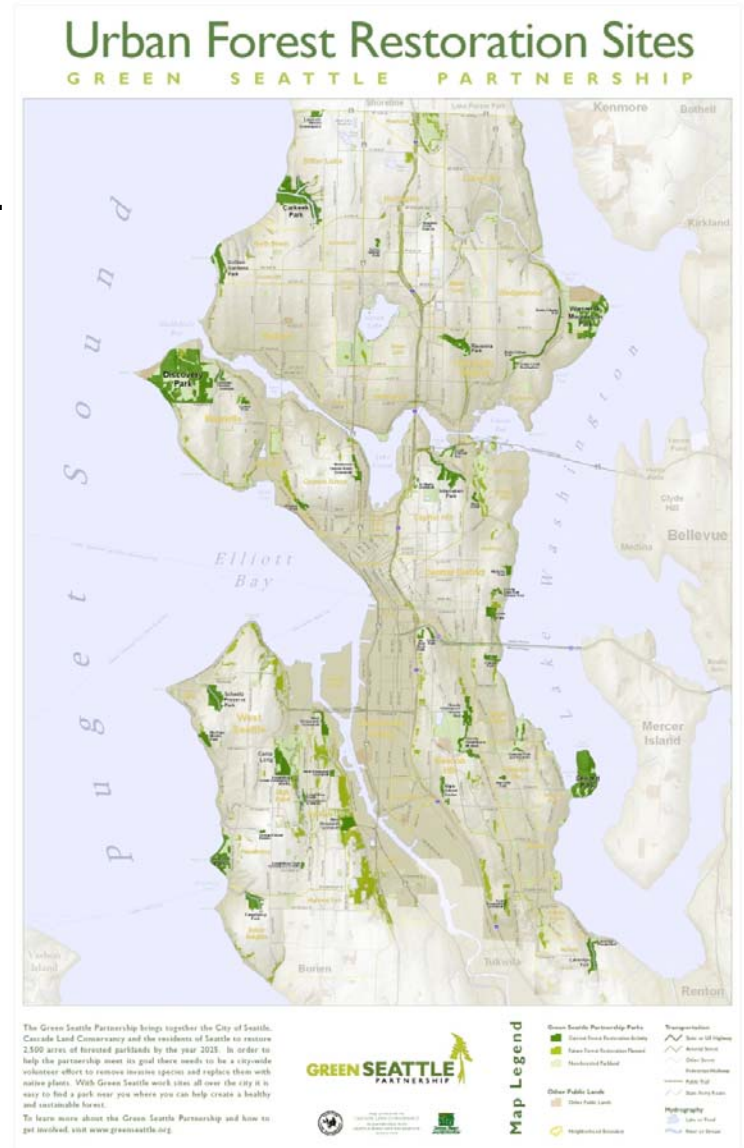




Green City Partnerships: USFS Urban and Community Forestry Program

Green City Partnerships are:

- Public/Private Ventures to Restore Urban Forests
- Responsible for 16,000 Volunteers & 820 events/yr.
- Enhancing recreational amenities within cities





US Forest Service Programs Support Both Working Forest and Urban Strategies

THE CASCADE AGENDA

100 Years Forward
Cascade Land Conservancy brought together 3,500 businesses, community and government leaders to identify the challenges our region faces and lay out a clear path for our future. We developed a bold 100-year action plan – *The Cascade Agenda* – to achieve two goals: **make our cities and towns spectacular** places to live, work and raise our families and **protect nearly 1.3 million acres** of farms, working forests, parks, shorelines and natural lands.

Our Communities

The key to protecting our precious rural and wild lands is to make our cities and towns vibrant magnets for growth.

- *The Cascade Agenda* will **preserve 265,000 acres of parks, shorelines and wildlife habitat.**
- We will collaborate with city and county leaders to make strategic investments in our community parks, plazas and art, culture and education centers.
- We will ensure that all urban residents have access to a park within a half-mile walk of their home and we will create new destination parks in our rural communities.

Urban Communities In the areas shown in magenta on the map, Cascade Land Conservancy and our partners will **ensure that our cities provide amenities that improve our health and happiness** – housing choices, parks and community spaces.

Rural Communities Throughout the areas shown in orange on the map, *The Cascade Agenda* will **protect the rural character and way of life** enjoyed by residents and also **provide new housing and recreation**.



Our Lands

The Cascade Agenda will **protect our farms and forests** with creative incentives-based conservation strategies that use business models and market forces.

Farms *The Cascade Agenda* will protect 85% of our region's current farmlands, shown in yellow on the map, for a total of **300,000 acres of working farms**.



Working Forests *The Cascade Agenda* will protect 93% of our timber lands, shown in green on the map, for a total of **700,000 acres of working forests**.



Public Lands Cascade Land Conservancy will work with our government, community and business partners to **maintain publicly owned recreation and habitat lands**, shown in gray on the map.

Expanding Our Efforts

Since releasing *The Cascade Agenda* in May 2005 Cascade Land Conservancy has expanded our conservation efforts to **include Mason County and an estuary program in our coastal counties.**



In the coming years, we will begin Phase II of *The Cascade Agenda* by working with business, community and government leaders in Mason and other counties to set goals for protecting their lands, economy and communities.

