

# Strategic Landscape Conservation: Protecting Working Landscapes to Enhance Rural Economies and Help Communities Adapt to Climate Change

**New Partners for Smart Growth  
Seattle, Washington  
February 6, 2010**

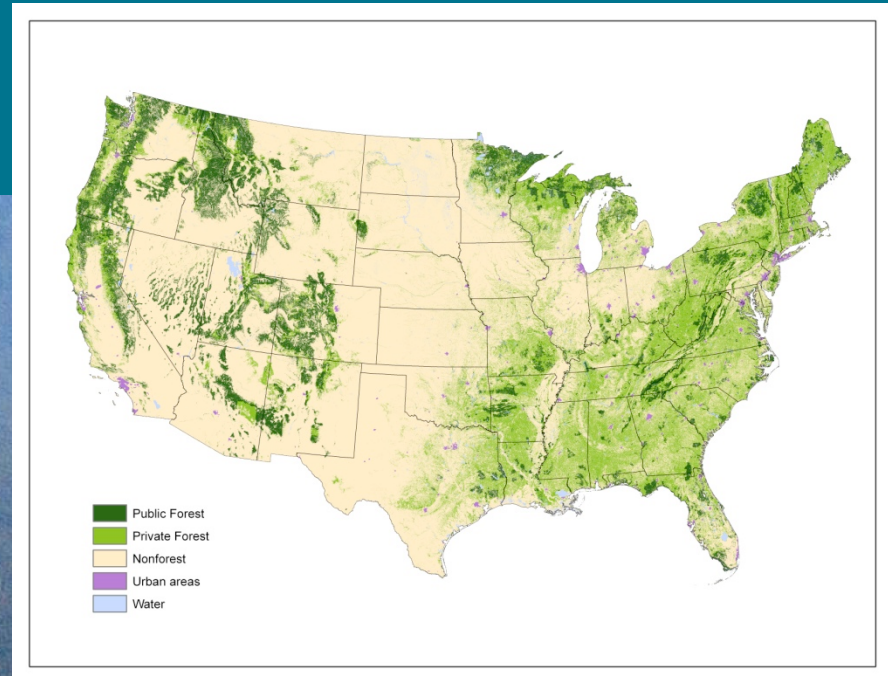
# Main Points

1. Rural lands provide critical public benefits;
2. Urban sprawl will continue to affect these benefits;
3. There are tools available to help plan for sustainable development.

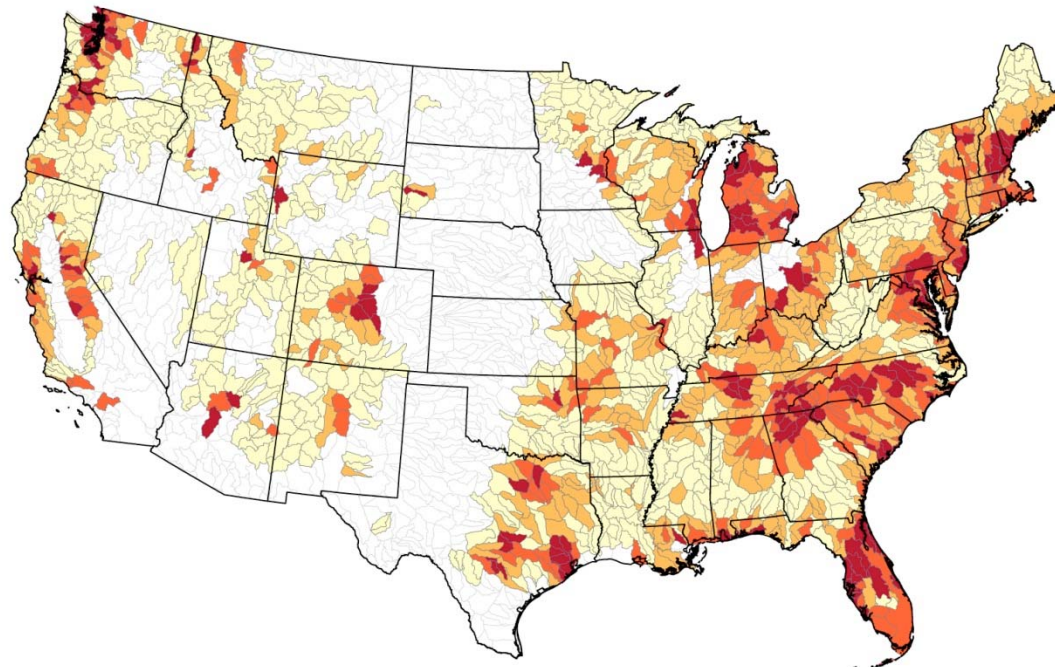
# Forest Service Tools to Conserve Private Forests

Karl Dalla Rosa and Susan Stein  
USDA Forest Service

# Private forests provide critical public benefits



# Urban Sprawl Can Diminish the Essential Benefits Provided by Rural Landscapes



Percentage of Private Forest to Experience Increased Housing Density

- 90th percentile (36.51 to 72.35% private forest to be developed)
- 75th percentile (23.47 to 36.50% private forest to be developed)
- 50th percentile (10.86 to 23.46% private forest to be developed)
- Less than 50th percentile (0.00 to 10.85% private forest to be developed)
- Insufficient private forest for this analysis

