

Moving Spartanburg Forward

Active Transportation + Community
Development in Spartanburg, SC

New Partners for Smart Growth: February 3-5, 2011



Welcome

- ❖ Jean Crowther, Alta Planning + Design
- ❖ Stephanie Monroe, City of Spartanburg
- ❖ Craig Lewis, The Lawrence Group
- ❖ Curt McPhail, Mary Black Foundation
- ❖ Rochelle Williams, Partners for Active Living



Spartanburg, S.C.

- ❖ Upstate of South Carolina
- ❖ Population just over 40,000
- ❖ County of more than 280,000
- ❖ Near 22% individuals below poverty
- ❖ Over 16% households without vehicle
- ❖ Deep philanthropic capacity



Local Initiatives

- ❖ 2000 Community Health Impact Assessment
- ❖ A decade of healthy lifestyle initiatives
- ❖ Downtown revitalization
- ❖ Preparing for growth
- ❖ Strong nonprofits and public/private collaboration



Setting the Stage

Stephanie Monroe + Craig Lewis



Auditing Existing Conditions

Spartanburg Area Active Living Assessment



Presented to Upstate Forever August 8, 2005
by the Lawrence Group Architects & Town Planners

AUDIT OF PAVEMENT STANDARDS IN SPARTANBURG AND ANDERSON COUNTIES

Mitigating the Impacts of Impervious Surfaces in
the Upstate Region of South Carolina



LAWRENCE
GROUP
Town Planners and Architects

Upstate
Forever
www.upstateforever.org



Active Living Audit – Project Scope



- ❖ Reviewed Plans, Ordinances & Regulations
- ❖ Identified provisions that impede active living
- ❖ Recommendations



Relevant Factors

- ❖ Community Design
- ❖ Integrated (mixed) uses
- ❖ Connected street networks
- ❖ Street and sidewalk widths
- ❖ Placement of schools
- ❖ Parks
- ❖ Sidewalks and bike paths
- ❖ Traffic congestion and air quality



Major Recommendations

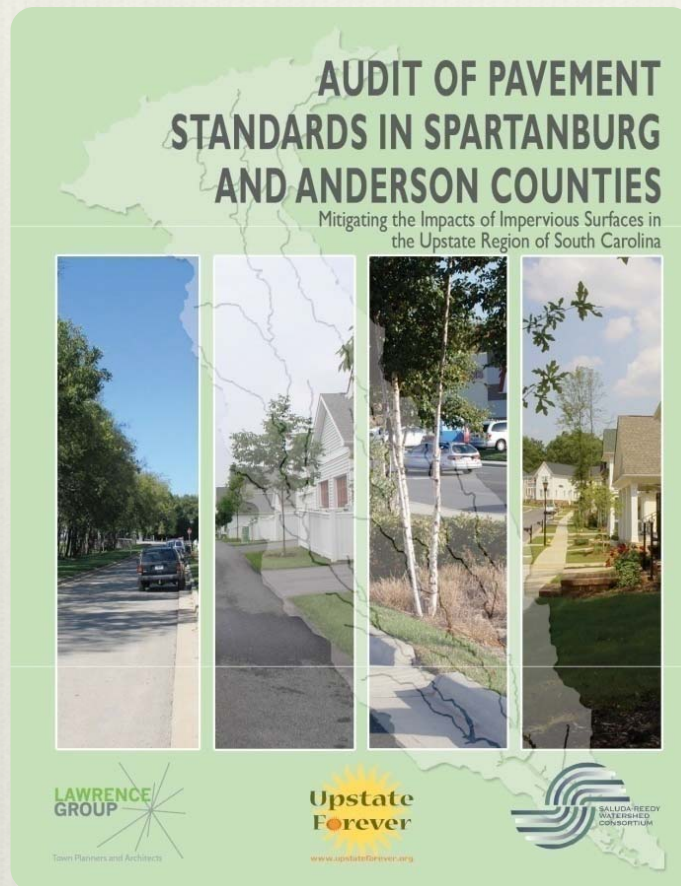
- ❖ Apply context-appropriate land use policy/regulations
- ❖ Active Living friendly street design guidelines
- ❖ Change development regulations
- ❖ Fund active living initiatives
- ❖ Continue active living education/dialogue



Action Strategy/Action Steps	Required Political Capital	Required Time/Effort	Primary Cost Element(s)	Priority	Implementing Agencies/Orgs	Coordinate with (Action step & section):	Status
Develop Pedestrian-oriented Overlay Districts	Moderate	Substantial	Consultant & Staff time	2	County, City	Transect (1.1); Design Guidelines (1.2)	
Reduce Parking Standards							
Reduce Minimums/Establish Maximums	Low	Limited	Staff time	1	County, City	Transect (1.1)	
Allow shared parking	Low	Limited	Staff time	2	County, City		
Count on-street parking	Low	Limited	Staff time	1	County, City	Street Design Guidelines (2.1),	
Require bicycle parking	Moderate	Moderate	Consultant &/or staff time	2	County, City		
1.2 Establish Design Guidelines that support Active Living	Moderate/High	Substantial	Consultant time	2	County, City	Transect (1.1); Street Design Guidelines (2.1)	
1.3 Incorporate Active Living Issues into Land Use Review and Planning Processes							
Include Active Living in Land Use Plan updates	Low	Moderate	Staff and/or consultant time	3	County, City		
Provide Active Living Training for Review and Enforcement Staff	Low	Moderate	Staff and/or consultant time	3	County, City		
2.0 STRATEGY: SUPPORT PEDESTRIAN ORIENTED TRANSPORTATION FACILITIES AND SERVICES							
2.1 Require that Streets . . .be Designed with Pedestrians and Cyclists in Mind							
Require Sidewalks	High	Moderate	Staff time	2	County, City	Transect (1.1); Street Design Guidelines (2.1)	
Require Street Trees	Moderate	Moderate	Staff time	3	County, City	Transect (1.1); Street Design Guidelines (2.1)	
Reduce required street widths	Low	Limited	Staff time	2	County, City	Transect (1.1); Street Design Guidelines (2.1)	
Adopt "Complete Streets" Policy	Moderate	Limited	Staff time	1	County, City, SPATS	Street Design Guidelines (2.1)	



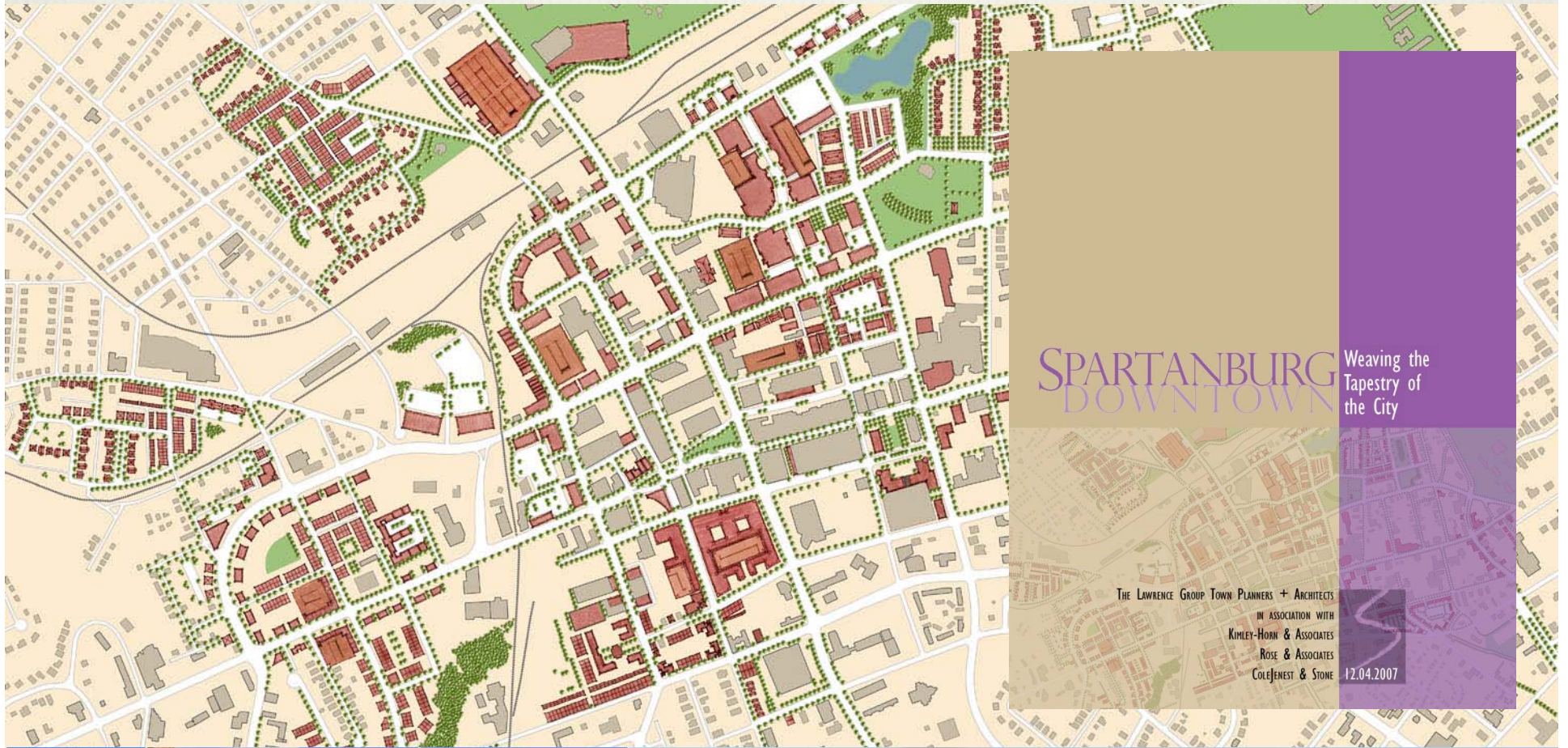
Pavement Audit



- ❖ Street Design
- ❖ Parking
- ❖ Driveways & Alleys
- ❖ Setbacks

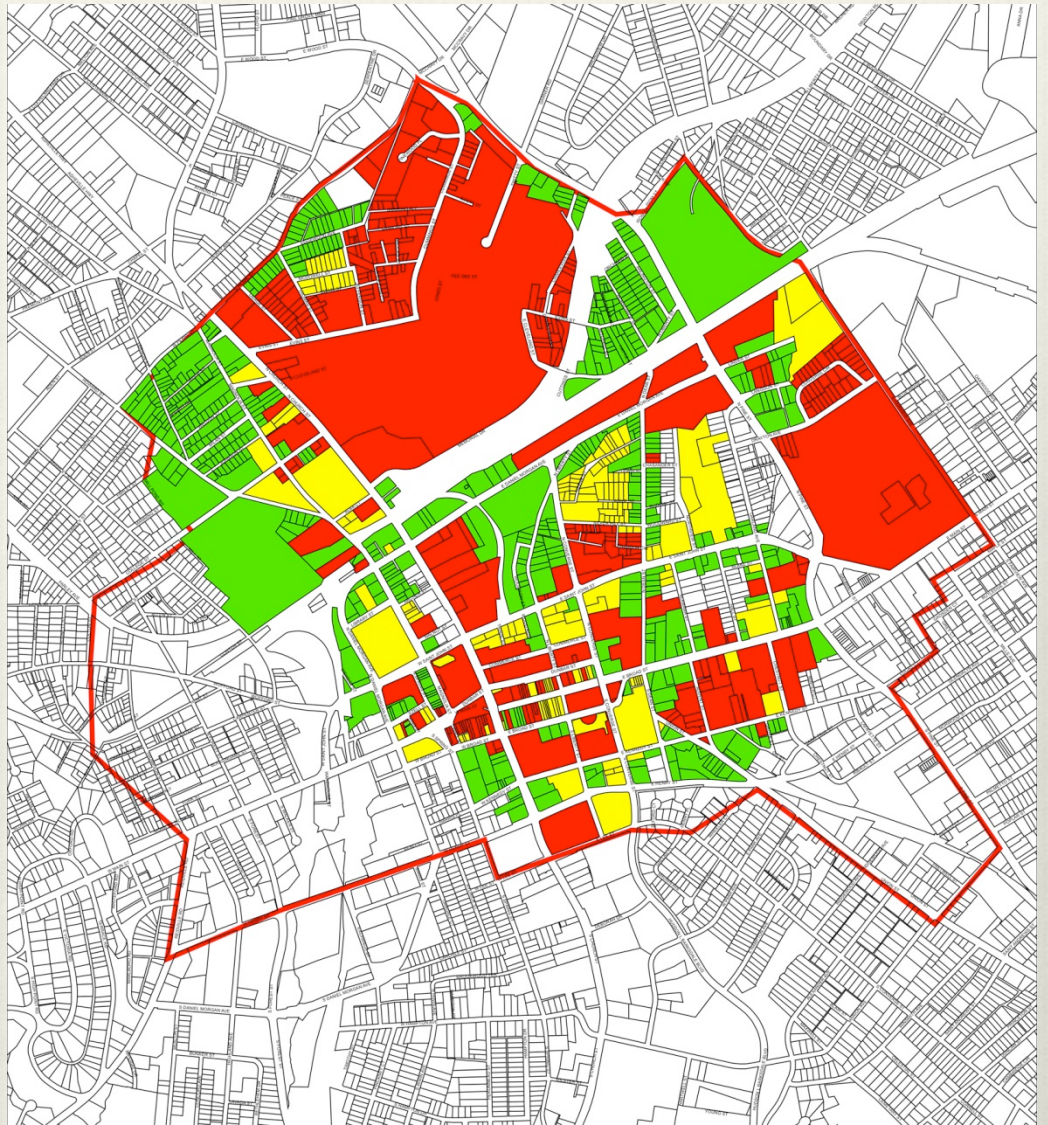


Downtown Master Plan

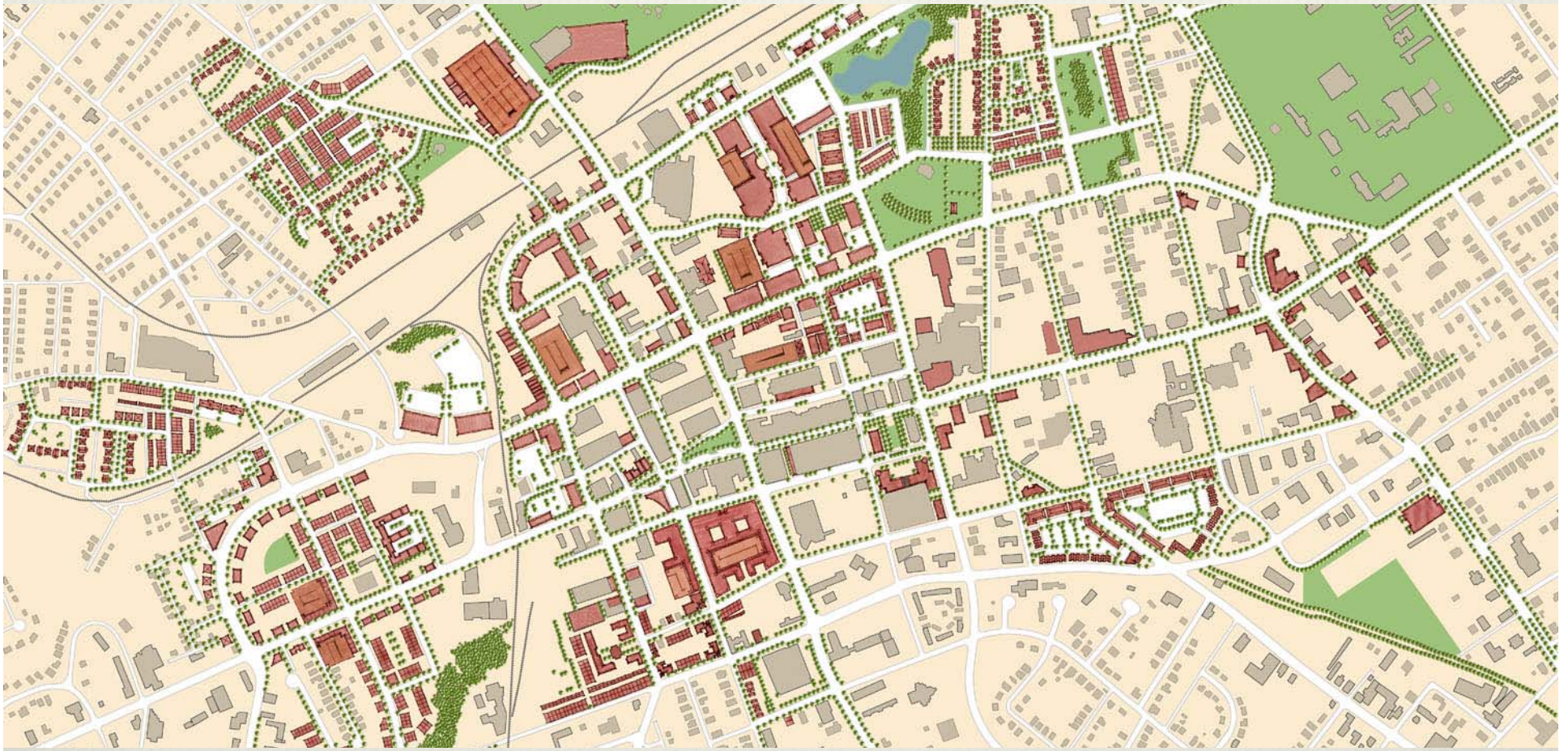




What Happened?



The Master Plan



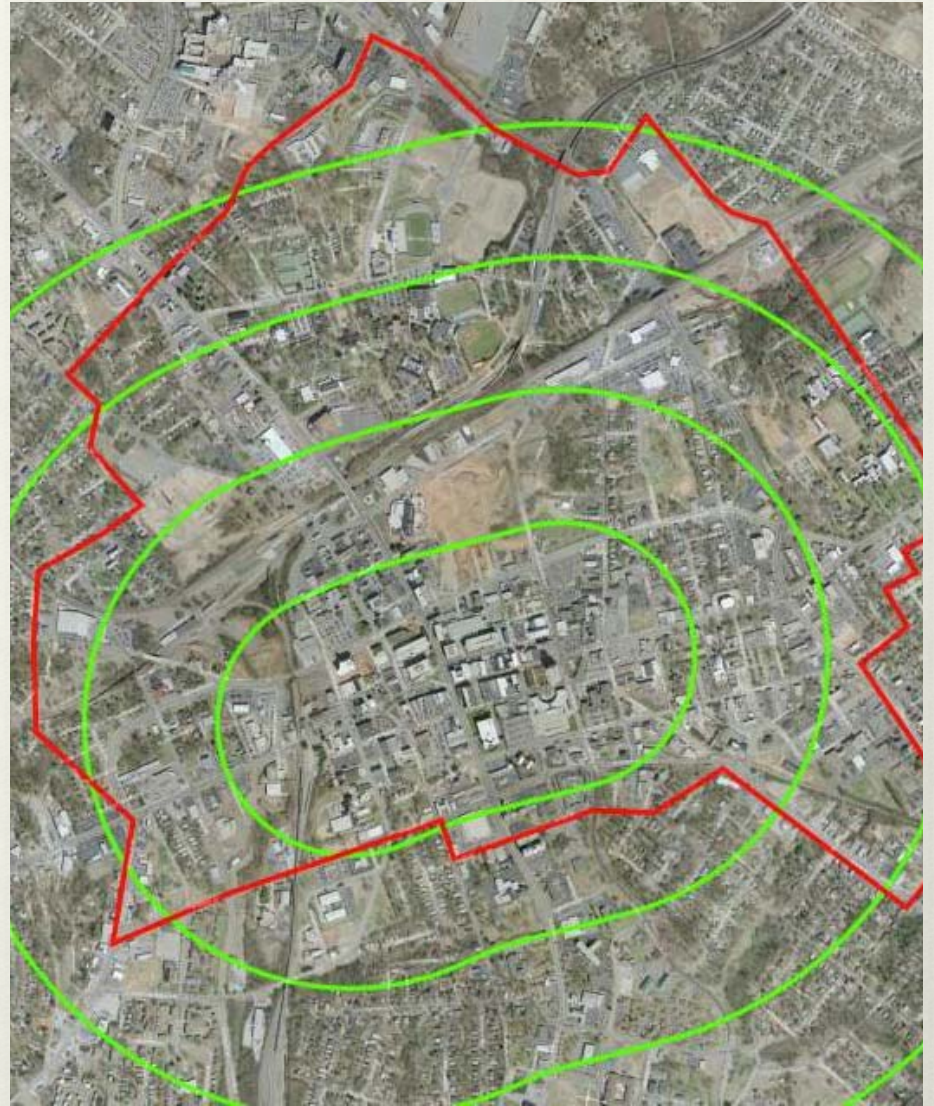
Keys for Downtown Success

- ❖ Housing – Housing
– Housing
- ❖ Bring Back the
Middle Class
- ❖ Connectivity +
Circulation
- ❖ Jobs (Daytime
Population)
- ❖ Public Space
- ❖ Things to go Do
- ❖ Things to go Buy
- ❖ Code for People





Spartanburg Neighborhoods



A Vision of Infill & Pedestrian Activity

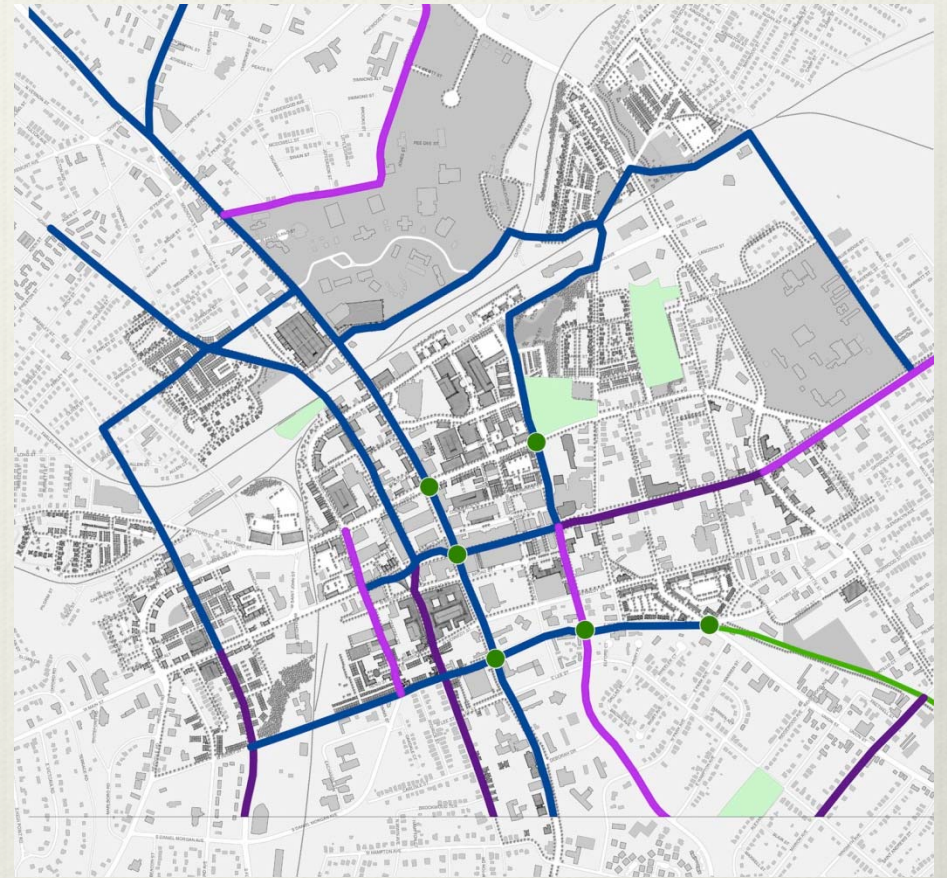
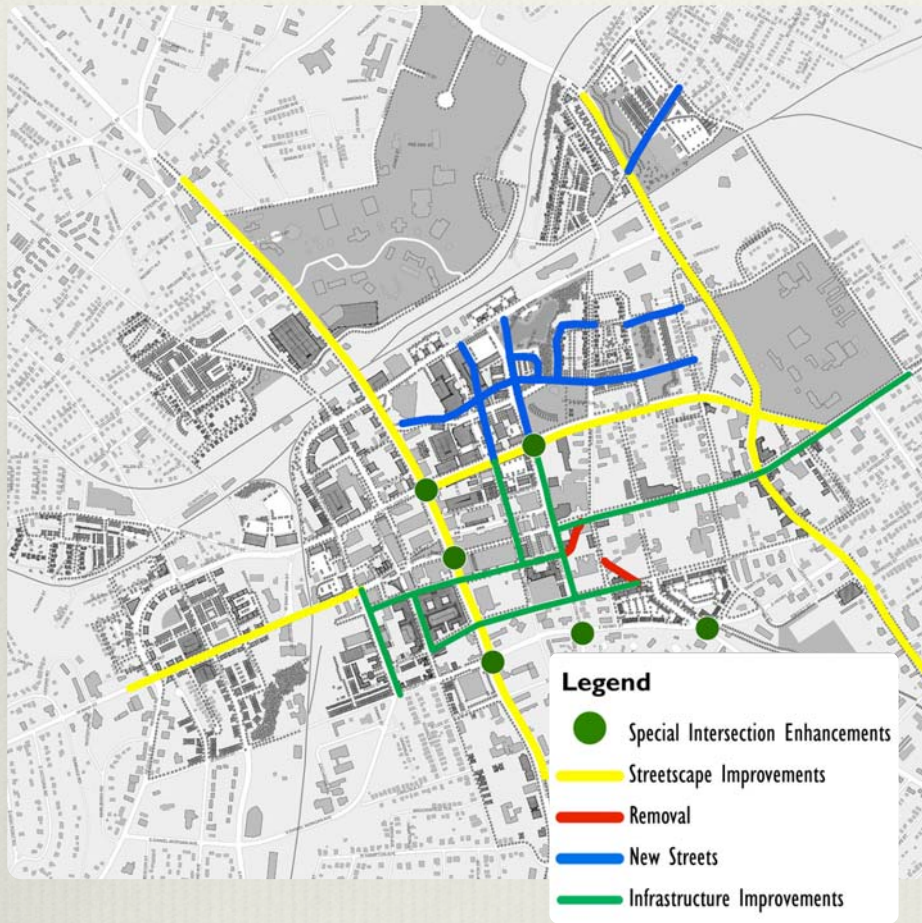




© 2003



Pedestrian and Bicycle Enhancements



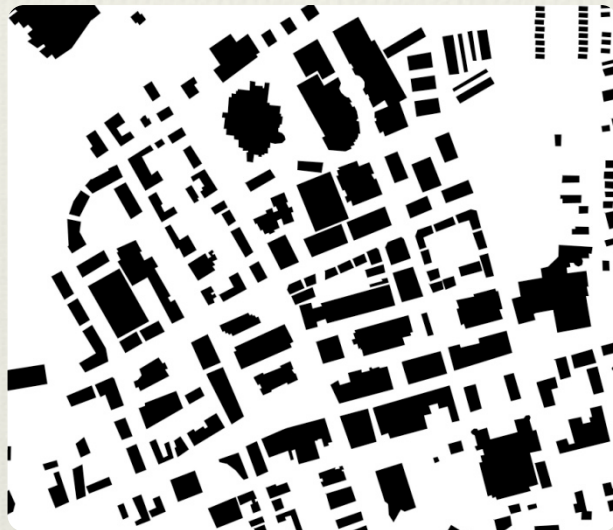
Focus on “A” Streets



Every development must answer 2 questions

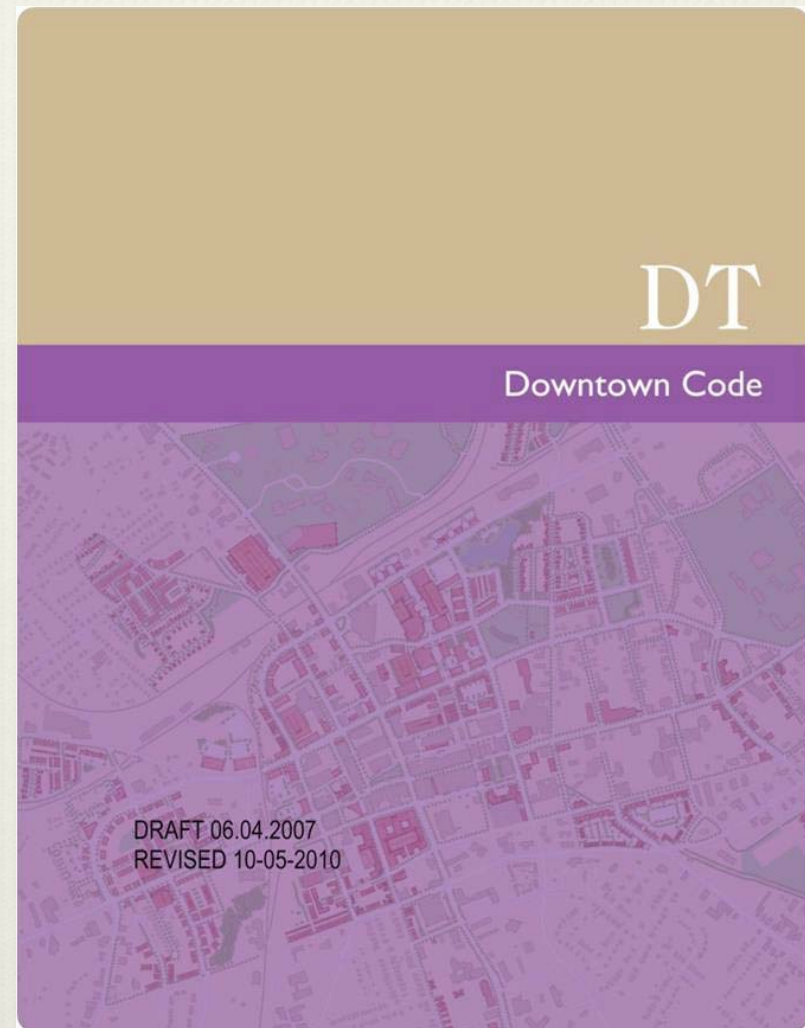
❖ How does this connect the downtown?

❖ Has this been designed for the pedestrian?



Downtown Urban Code

- ❖ Focus in on the design (or form) of the buildings and the use is secondary.
- ❖ Promotes:
 - ❖ More opportunities for mixed-use
 - ❖ Better infill compatibility



Design Examples

Current Zoning Plan versus Urban Code Plan





Daniel Morgan Ave & West Main St



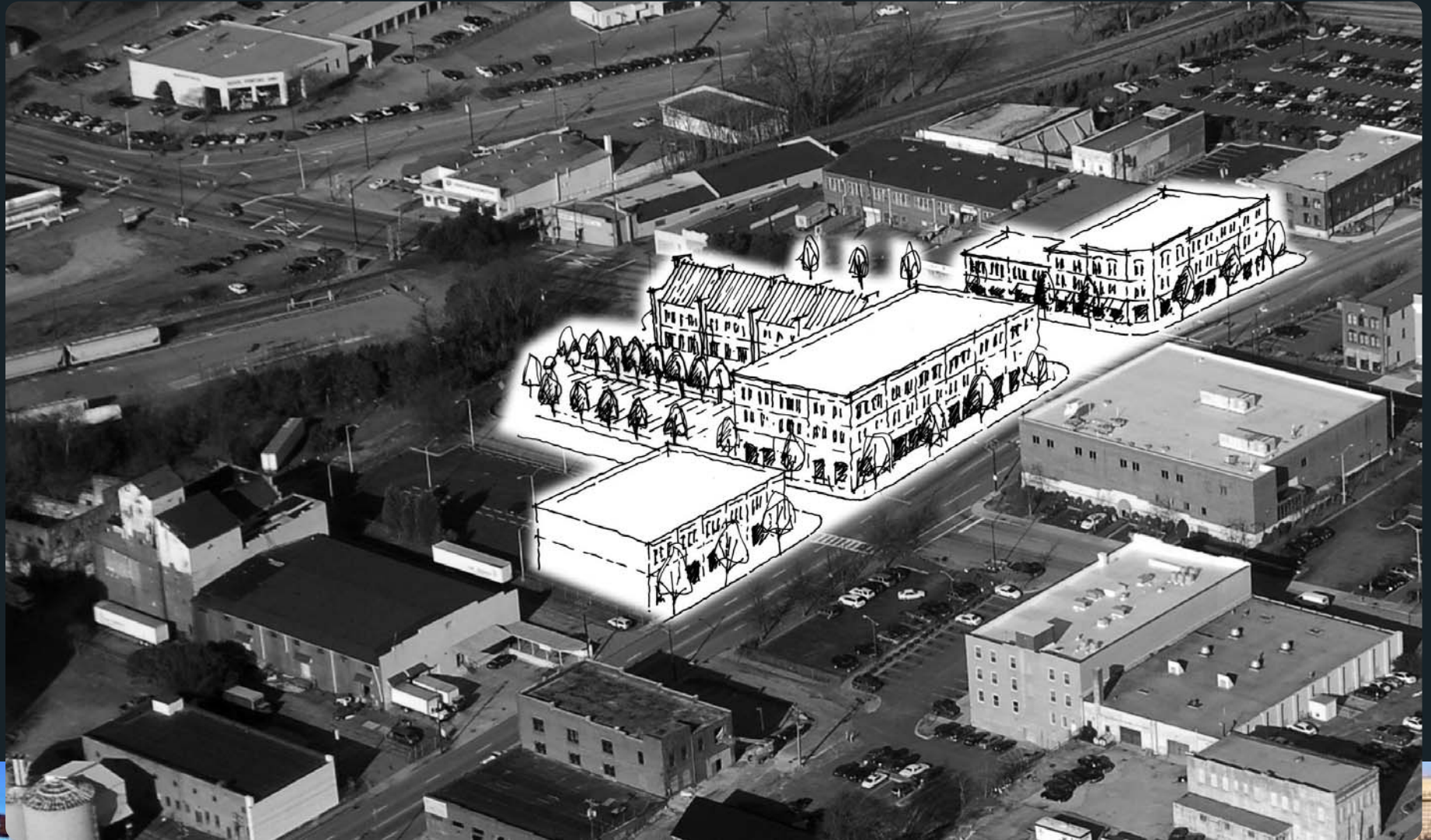


Permitted Under Current Code





Proposed Code Requirements





Church Street & St. John Street



Permitted Under Current Code





Proposed Code Requirements



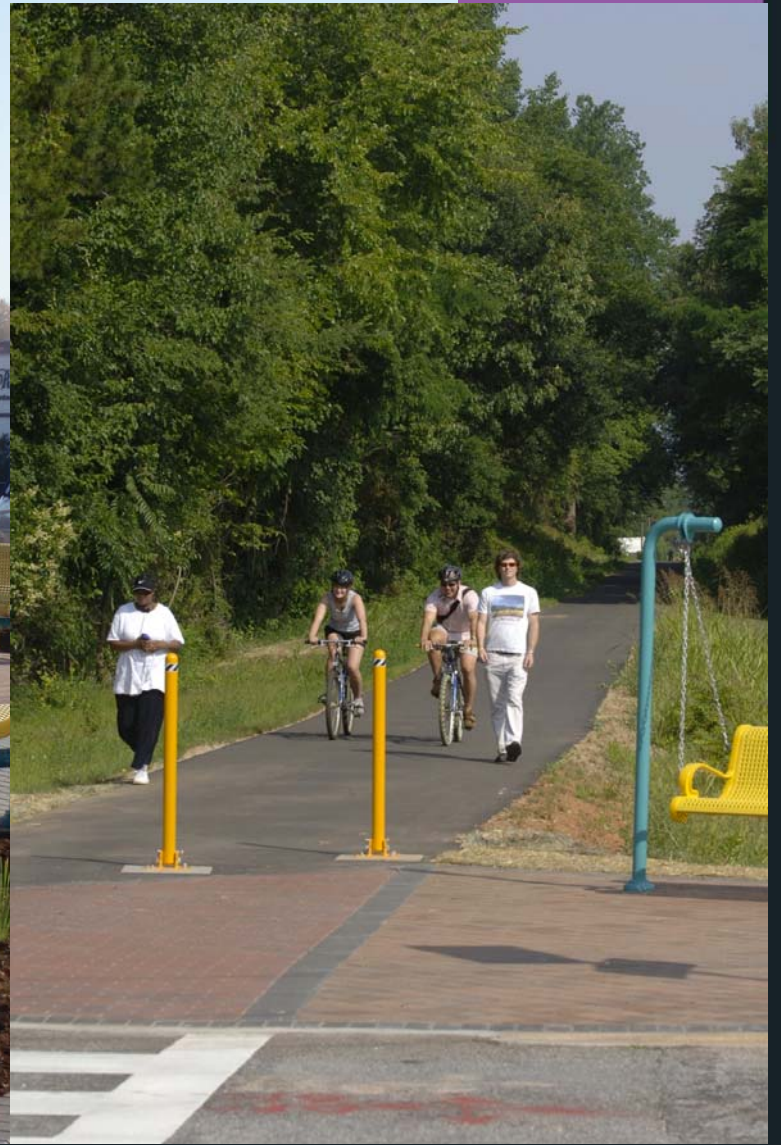


Kennedy Street



Proposed Code Requirements

















From Top Down to Bottom Up

Curt McPhail + Rochelle Williams





the mobile market

the mobile market
hub city
SPARTANBURG COMMUNITY BICYCLES



the mobile
HUB CYCLE

SPARTANBURG COMMUNITY BICYCLES

HUB CYCLE
SPARTANBURG COMMUNITY BICYCLES

Partners in
Active Living
804-596-9638



the mobile
MARKET
SPARTAN BICYCLES

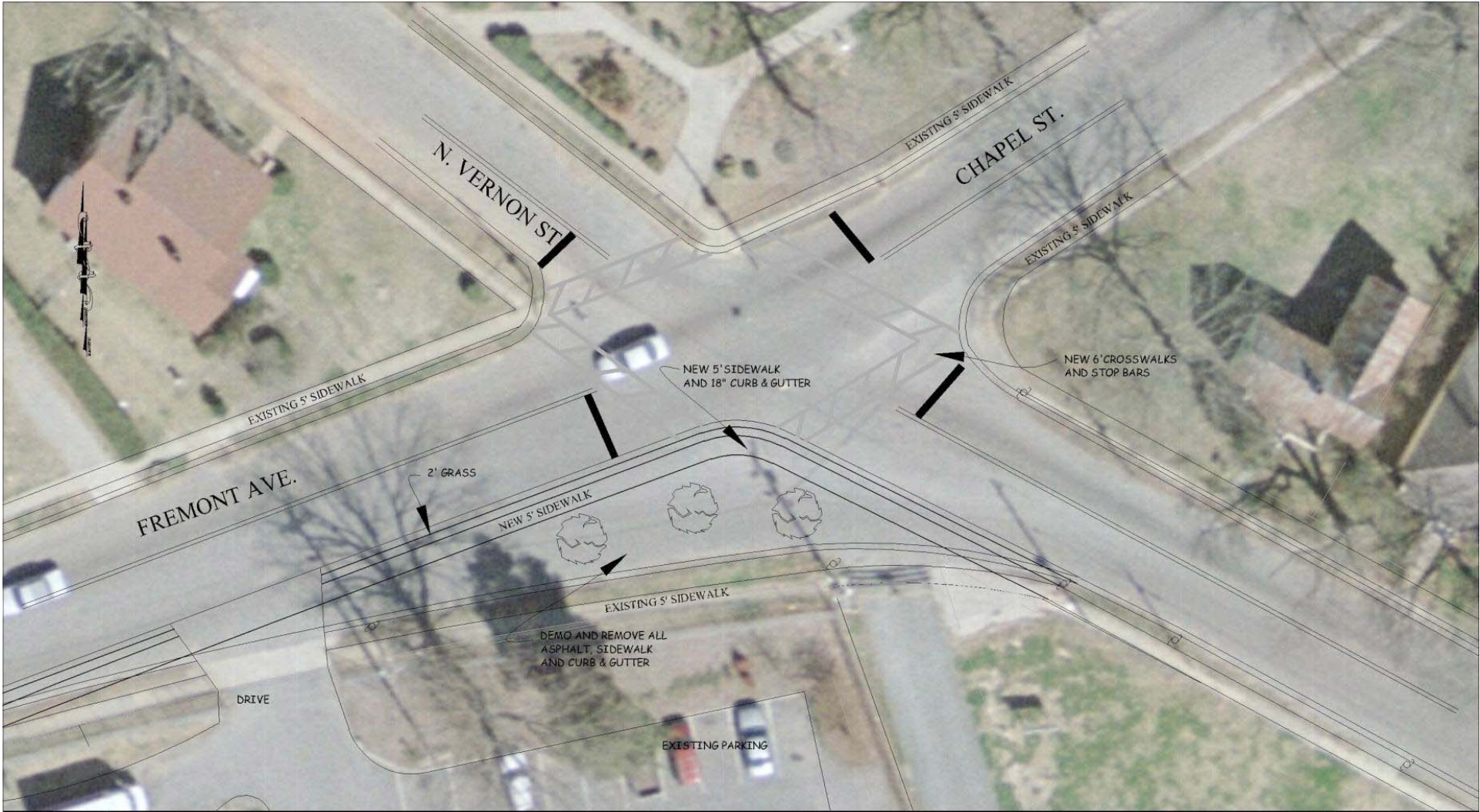
the
mobile
market

Market
2 lbs
1/2 lb
1/4 lb
1/8 lb
1/16 lb
1/32 lb
3/4 lb
1 lb
1 1/2 lb
2 lb
3 lb
4 lb
5 lb
6 lb
7 lb
8 lb
9 lb
10 lb
11 lb
12 lb
13 lb
14 lb
15 lb
16 lb
17 lb
18 lb
19 lb
20 lb
21 lb
22 lb
23 lb
24 lb
25 lb
26 lb
27 lb
28 lb
29 lb
30 lb
31 lb
32 lb
33 lb
34 lb
35 lb
36 lb
37 lb
38 lb
39 lb
40 lb
41 lb
42 lb
43 lb
44 lb
45 lb
46 lb
47 lb
48 lb
49 lb
50 lb
51 lb
52 lb
53 lb
54 lb
55 lb
56 lb
57 lb
58 lb
59 lb
60 lb
61 lb
62 lb
63 lb
64 lb
65 lb
66 lb
67 lb
68 lb
69 lb
70 lb
71 lb
72 lb
73 lb
74 lb
75 lb
76 lb
77 lb
78 lb
79 lb
80 lb
81 lb
82 lb
83 lb
84 lb
85 lb
86 lb
87 lb
88 lb
89 lb
90 lb
91 lb
92 lb
93 lb
94 lb
95 lb
96 lb
97 lb
98 lb
99 lb
100 lb

Watermelon
Apples
Oranges







Drawn By	CARTER
Checked By	
App'd By	
Date	6/25/18



**CITY OF SPARTANBURG
ENGINEERING DIVISION**

FERMONT STREET & VERNON STREET
INTERSECTION IMPROVEMENTS

Project No.	FREMONT	Dwg. No.	1
Scale	1 INCHES		



Lessons Learned

Go to the Experts

Respect the Process

Leverage the Money



Discussion



Contact Information

- ❖ SMonroe@cityofspartanburg.org
- ❖ Craig.Lewis@thelawrencegroup.com
- ❖ CMcPhail@maryblackfoundation.org
- ❖ RWilliams@active-living.org
- ❖ JeanCrow@altaplanning.com



Thank you!

