

The San Diego Foundation's *Climate Initiative*

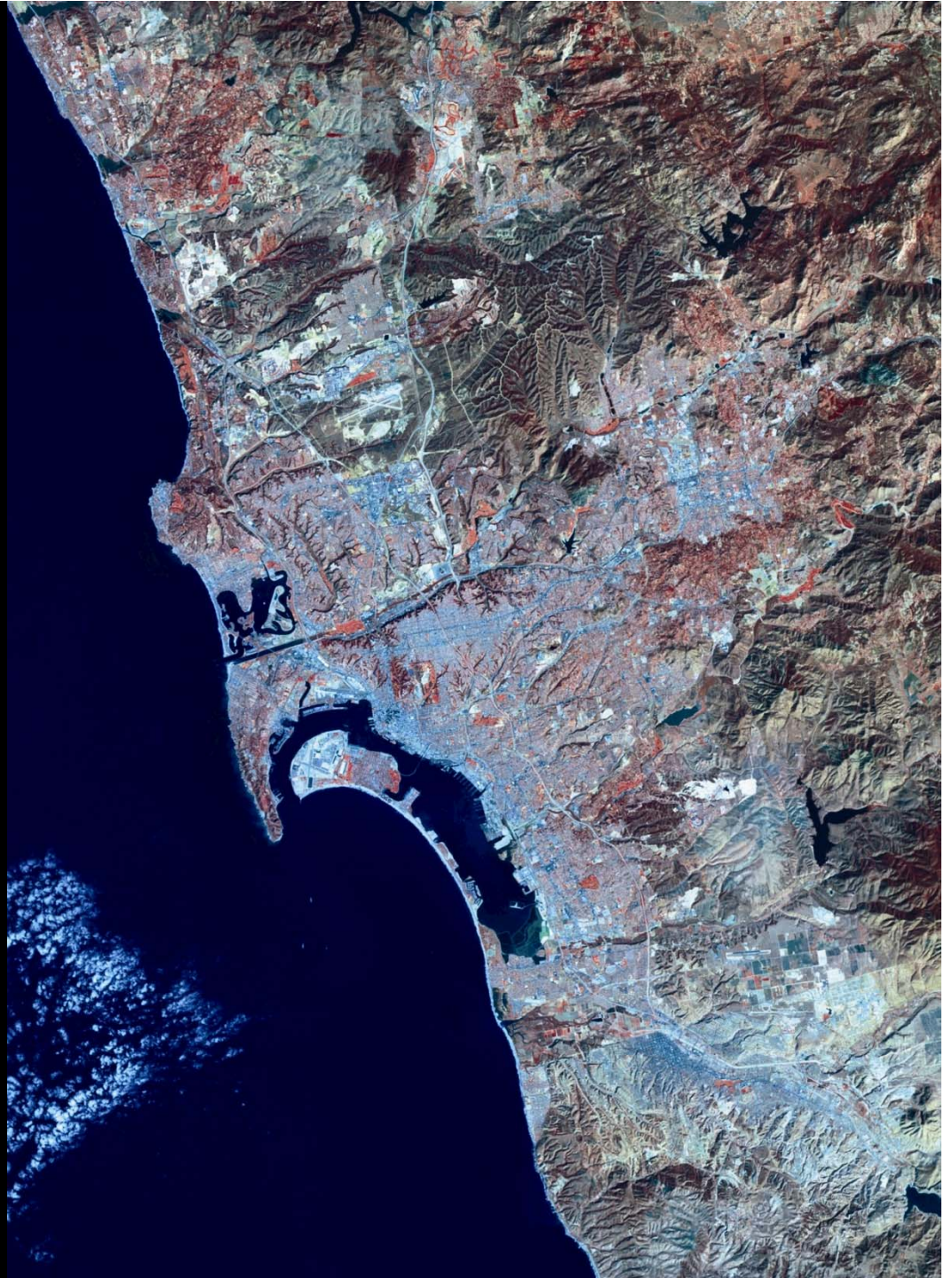


New Partners for Smart Growth Conference: February 2011
Resilient Regions



*While climate change
is a global issue,
all solutions are
ultimately local*

San Diego: Uniquely at risk



San Diego: Uniquely at risk



Existing wildfire conditions

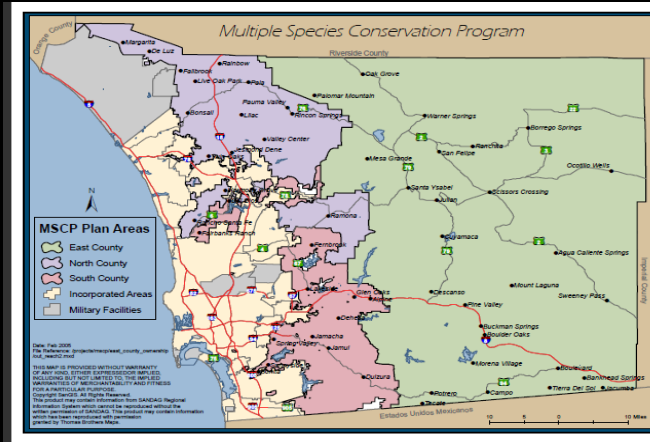


Biodiversity hotspot,
with many already
imperiled species



Import up to 90% of our water

But we also have unique assets



The San Diego Foundation's *Climate Initiative*

Five-pronged approach:

1. Support Research to Inform Public Policy
2. Provide Technical Experts (ex. ICLEI)
3. Build Public Awareness
4. Convening /Collaboration
5. Nonprofit/Community
Engagement



The San Diego Foundation's *Climate Initiative*

Work with government, business, and the community at large to advance regional efforts to curb greenhouse gas emissions (*mitigation*) and reduce our vulnerability to some of the most harmful effects of climate change (*adaptation*)



Climate Initiative Partners



TSX Group, Inc

Platt/Whitelaw Architects, Inc.

Zell Family Foundation



Orca, Hervey Family, Beyster Family, Hattie Ettinger Conservation Funds



Context for Local Climate Action

Mitigation

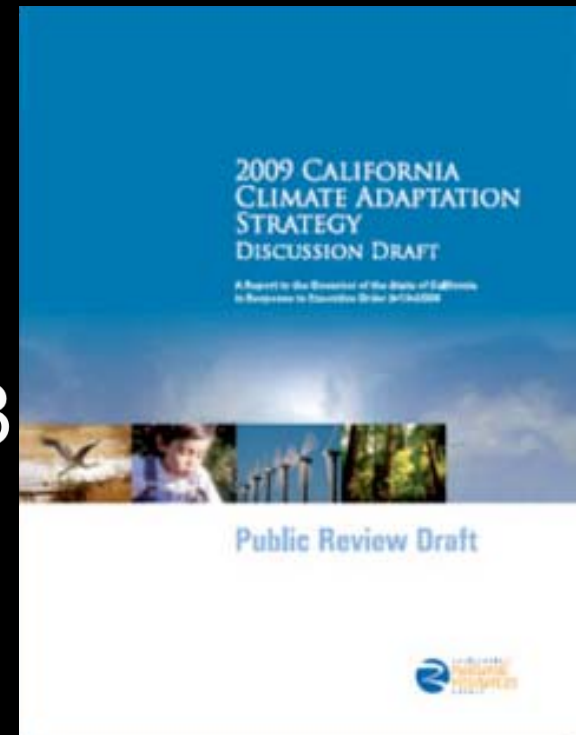
- AB32
- Prop 23
- SB375



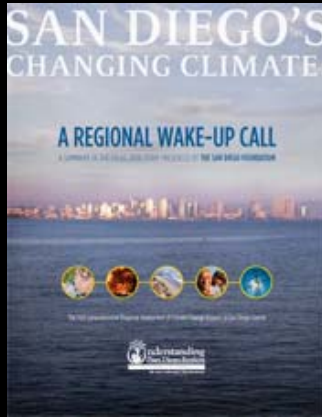
Context for Local Climate Action

Adaptation

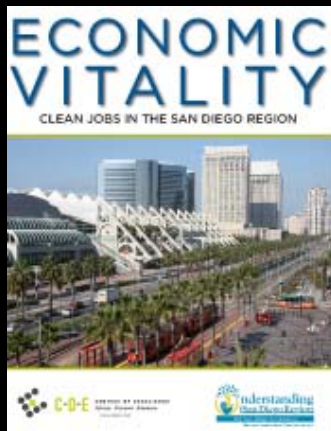
- CEQA
- NEPA
- Executive Order S-13-08



Foundation-funded Research



- Regional Focus 2050 Study
 - CA's first comprehensive regional assessment of climate impacts
 - 9 follow up scientific impacts studies



- Public Opinion Research (*Sept 2010*)
- Clean Jobs Report (*Dec 2010*)

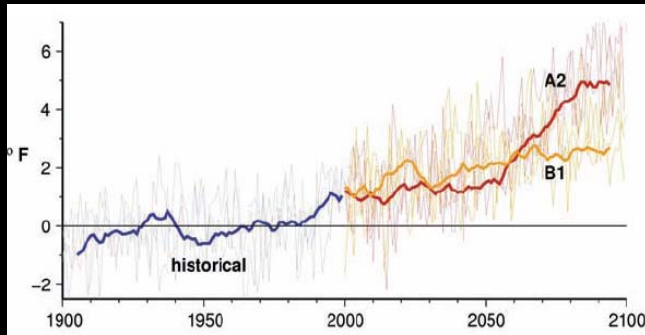
Research



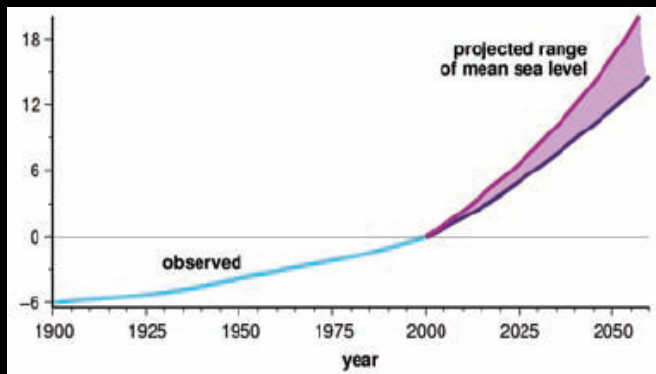
Focus 2050 Study Findings

If current trends continue, by 2050...

Projected Annual Temperatures for
San Diego County until 2100



Projected Sea Level Rise for San Diego
County until 2050



- San Diego's climate will be hotter & drier.
- Sea level will rise up to 18 in higher.
- We will face a severe water shortage.
- Wildfires will be more frequent & intense.
- Native plant & animal species will be lost.
- Public health will be at risk, especially among the elderly & children.

Coastal Flooding

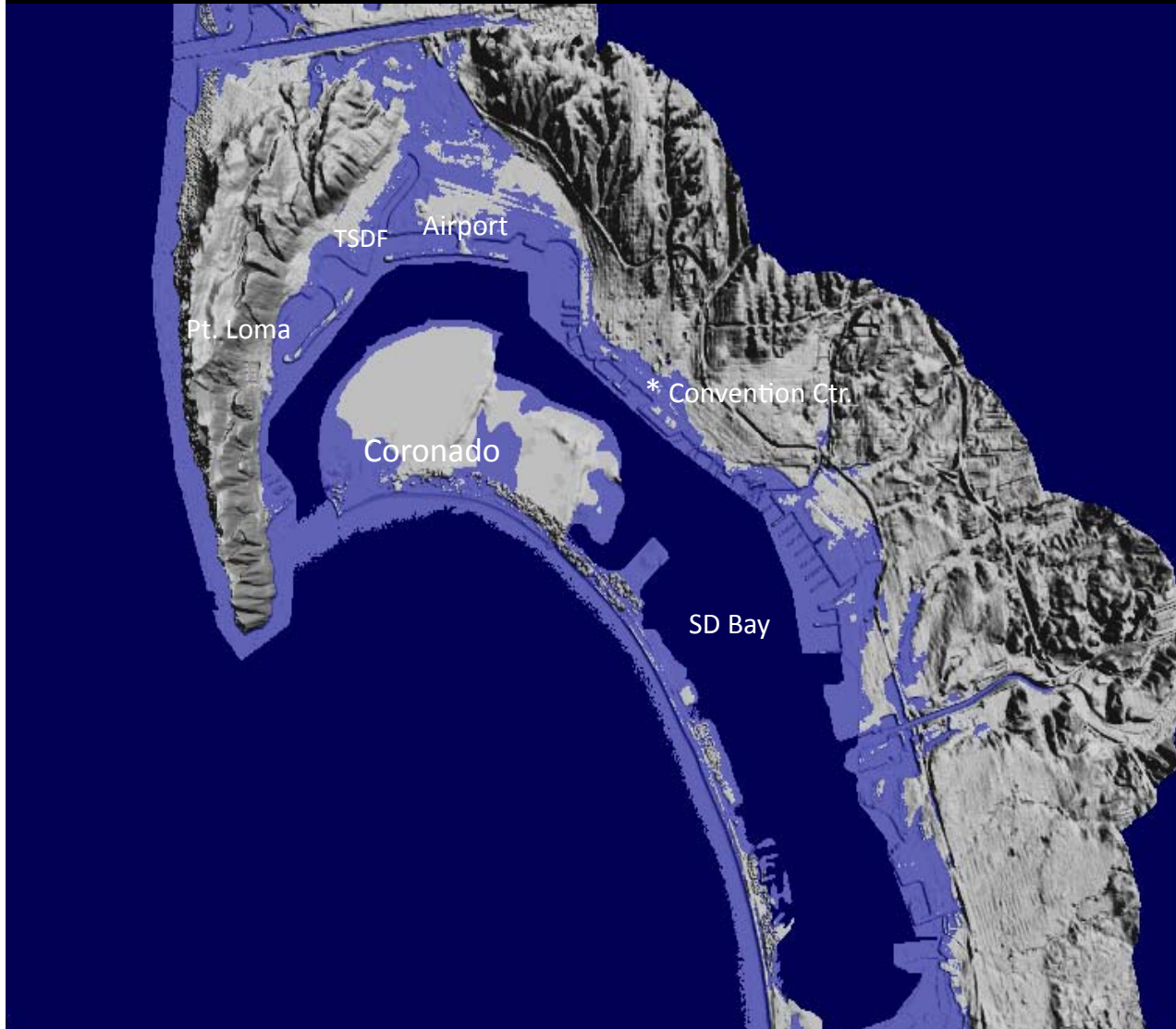


San Diego Bay
at Present

– Dr. Rick Gersberg,
SDSU



Coastal Flooding



2100:
2m (6.5 ft) Sea
Level Rise
& 100-Year
Flood

– Dr. Rick Gersberg,
SDSU



Our Region's Air Pollution



Our region has the highest emissions per capita in the state

Source: www.sandiego.edu/epic/ghginventory

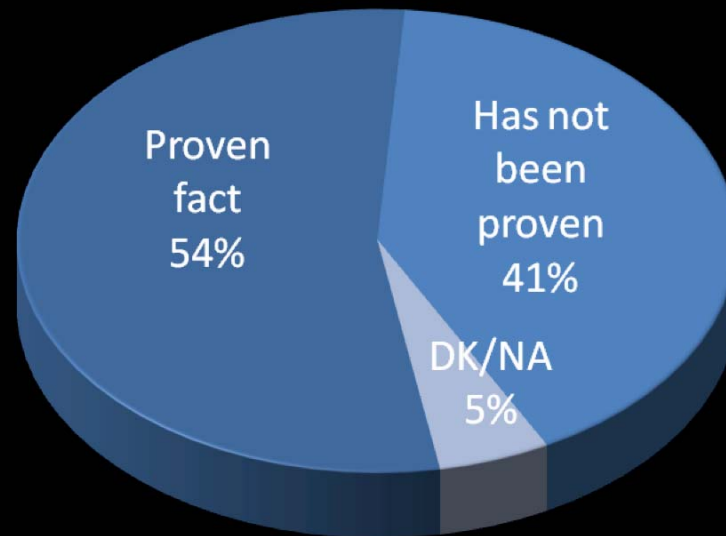
Research



Public Opinions on Climate Change

Fairbanks, Maslin, Maullin, Metz & Associates – FM3

While a majority of voters believe global warming is a “proven fact”...

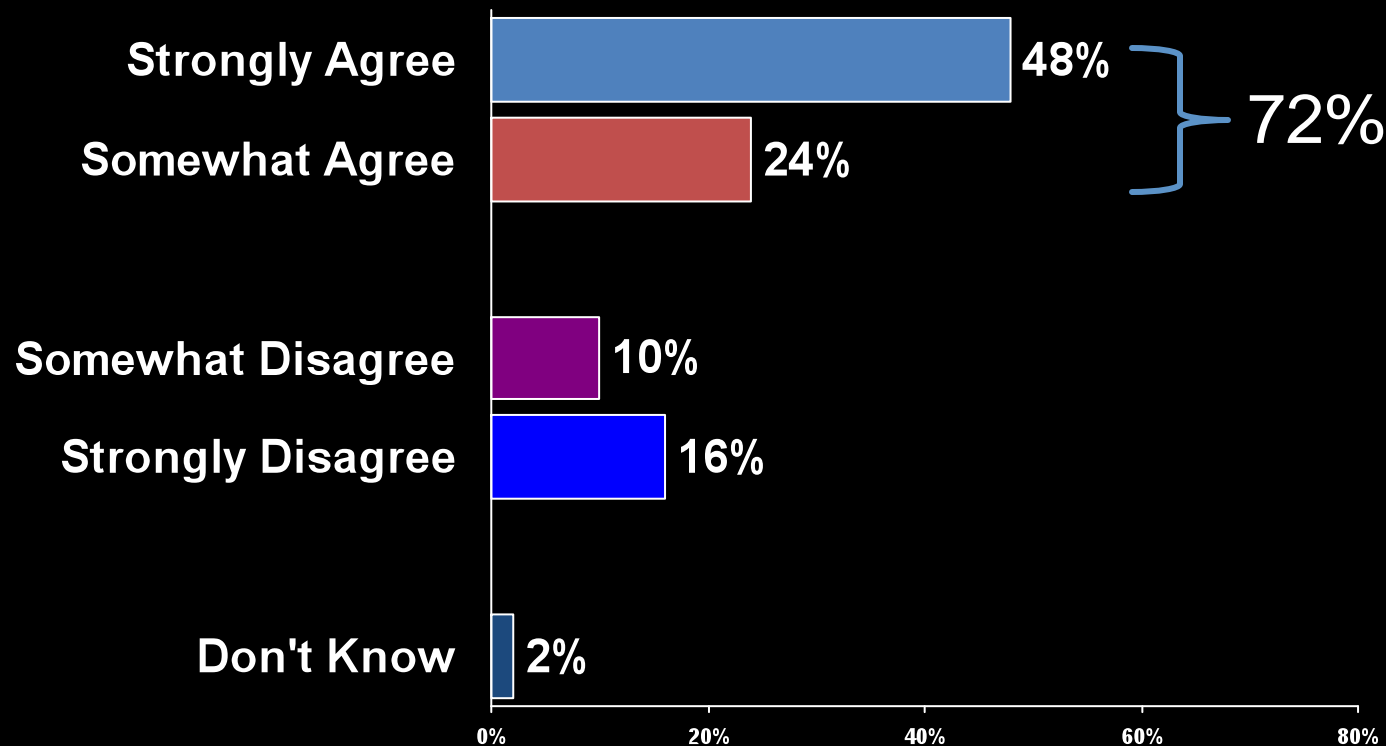


..there is much broader support among all voters for implementing laws designed primarily to reduce greenhouse gas emissions by with many co-benefits

Public Opinions on Climate Change

Fairbanks, Maslin, Maullin, Metz & Associates – FM3

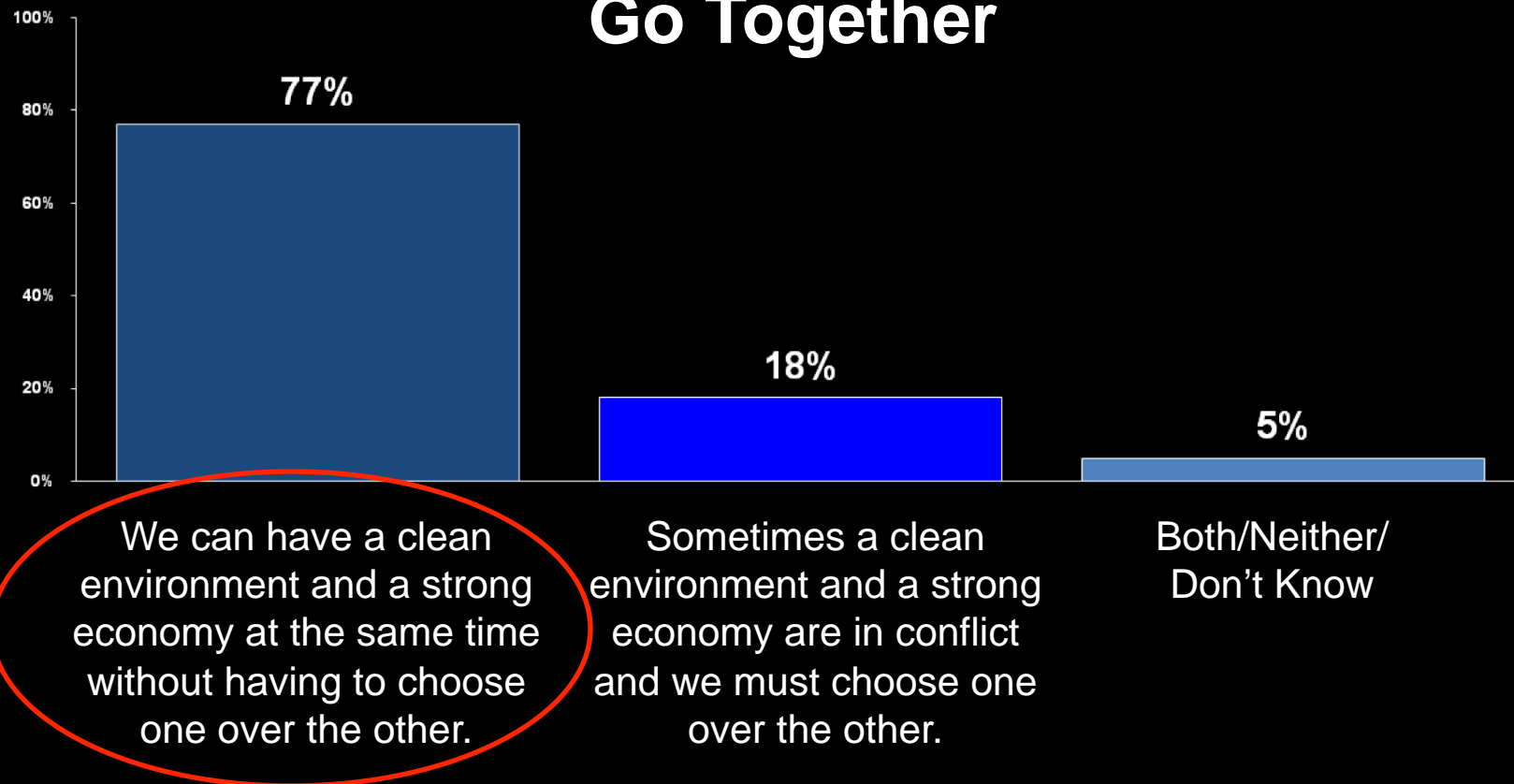
“San Diego County should take a statewide leadership position in setting goals for reducing emissions.”



Public Opinions on Climate Change

Fairbanks, Maslin, Maullin, Metz & Associates – FM3

A Strong Economy and Healthy Environment Go Together

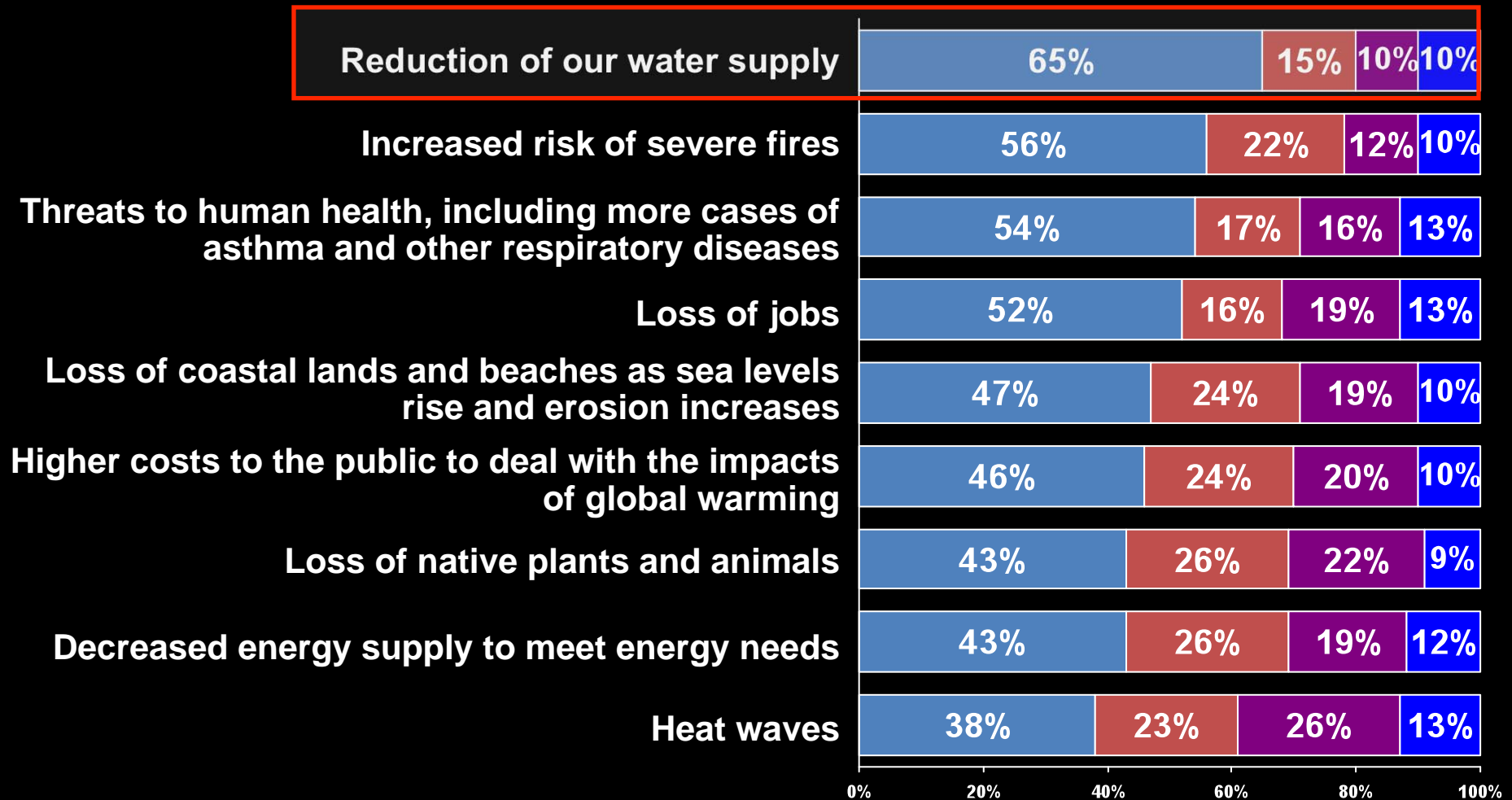


3. Now I am going to read you a pair of statements. Please tell me which statement comes closest to your own view, even if neither of the statements matches your views exactly.

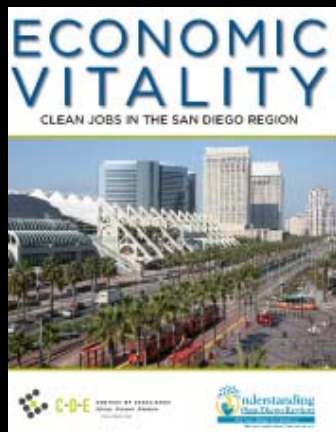
Public Opinions on Climate Change

Fairbanks, Maslin, Maullin, Metz & Associates – FM3

Ext. Very Concern. Strongly Concern. Not Too Concern. Don't Bel./DK/NA



Our Region's Economic Bright Spot



- 1 in 10 jobs connected to clean tech now in the San Diego region
- \$445 M in investment in past 5yrs
- Future: \$1 billion and 27,000 jobs

Research



Lessons Learned from Research

- We can't afford to wait to address climate change
- There is high public support to do so
- There is economic opportunity in doing so

Research



Community Engagement

Climate Initiative Advisors

Scott Peters, *Climate Initiative Chair*
David Engel, *Climate Initiative Vice-Chair*
Scott Anders, *USD Energy Policy Initiative Center*
Bill Anderson, *City of San Diego*
Risa Baron, *San Diego Gas and Electric*
Frank Belock, *SD County Water Authority*
Laurie Berman, *Caltrans*
Lisa Bicker, *CleanTECH San Diego*
Lisa Briggs, *Sempra Energy*
Jason Foster, *SD County Water Authority*
Gary Gallegos, *SANDAG*
Molly Gavin, *Qualcomm*
Judy Forrester, *Bank of America*
Jill Gravender, *SAIC*
Ben Haddad, *California Strategies*
Andy Hamilton, *Air Pollution Control District*

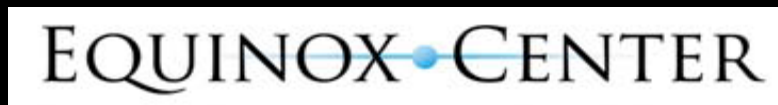
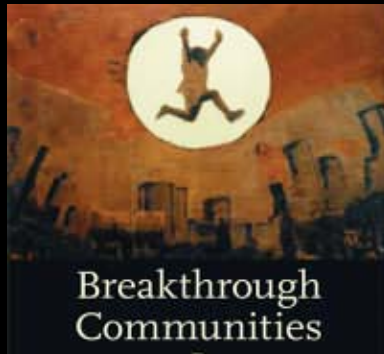
Brian Holland, *ICLEI-Local Governments for Sustainability*
David Hauser, *City of Carlsbad*
Lisa Hildebrand, *City of Carlsbad*
Robert Kard, *Air Pollution Control District*
Debra Kelley, *American Lung Association*
Bob Leiter, *Consultant to SANDAG*
Andrew Martin, *SANDAG*
Andrew McAllister, *Center for Sustainable Energy*
Michael Meacham, *City of Chula Vista*
Devon Muto, *County of San Diego*
Patricia McCoy, *Imperial Beach City Council (retired)*
Linda Pratt, *City of San Diego*
Jim Sandoval, *City of Chula Vista*
Cheryll Stewart, *SD County Water Authority*
Muggs Stoll, *SANDAG*

....in addition to the Board of Governors and Environment Working Group

Community Engagement



Community Engagement



Community Engagement



Lesson Learned from Community Engagement

Philanthropy has a role:

- Convening an honest dialogue
- Providing scientific and policy resources that governments cannot
- Distilling policies and plans to address climate change



Community Engagement



Policy Engagement



- Emissions inventories
- Risk management for sea level rise

Policy Engagement



Lesson Learned from Policy Engagement

Finding the right answer is important, but...

...implementing policies to address climate change requires broad public awareness and support



Policy Engagement



Public Awareness

- \$1M National Science Foundation award to work with University of San Diego & other partners on a pilot education program
 - we know impacts and co-benefits of adaptation are message that resonates!



Policy: Where We Were: 2006

US Mayors/Climate Action Registry

- Del Mar

Greenhouse Gas Inventories

- Chula Vista and San Diego

Local Climate Action Plans

- Chula Vista and San Diego

Other Regional Plans



Policy: Where We Are: 2011

US Mayors/Climate Action Registry

- **13 Local Governments Committed**, including Carlsbad, Coronado, Chula Vista, Del Mar, El Cajon, Encinitas, Imperial Beach, La Mesa, National City, San Diego, Solana Beach, Vista, and the County.

Greenhouse Gas Inventories

- **All 19 Local Governments** (Seven cities' inventories will be finished by February 2011), as well as Port of San Diego and San Diego County Water Authority

Local Climate Action Plans

- **Chula Vista and San Diego.** Plans for the County of San Diego, Del Mar, Encinitas, Escondido, National City, Solana Beach, and Vista in development

Other Regional Plans

Port of San Diego: *Mitigation Adaptation Plan*

ICLEI Pilot Project: San Diego Bay Adaptation Strategy

SANDAG: *SB375 Sustainable Communities Strategy; Regional Climate Action Strategy*

San Diego County Water Authority: *Master Plan*

US Navy Region Southwest



Policy: Where We Are: 2011

US Mayors/Climate Action Registry

- **13 Local Governments Committed**, including Carlsbad, Coronado, Chula Vista, Del Mar, El Cajon, Encinitas, Imperial Beach, La Mesa, National City, San Diego, Solana Beach, Vista, and the County.

Greenhouse Gas Inventories

- **All 19 Local Governments** (Seven cities' inventories will be finished by February 2011), as well as Port of San Diego and San Diego County Water Authority

Local Climate Action Plans

- **Chula Vista and San Diego.** Plans for the County of San Diego, Del Mar, **Encinitas**, Escondido, National City, Solana Beach, and Vista in development

Other Regional Plans

Port of San Diego: *Mitigation Adaptation Plan*

ICLEI Pilot Project: *San Diego Bay Adaptation Strategy*

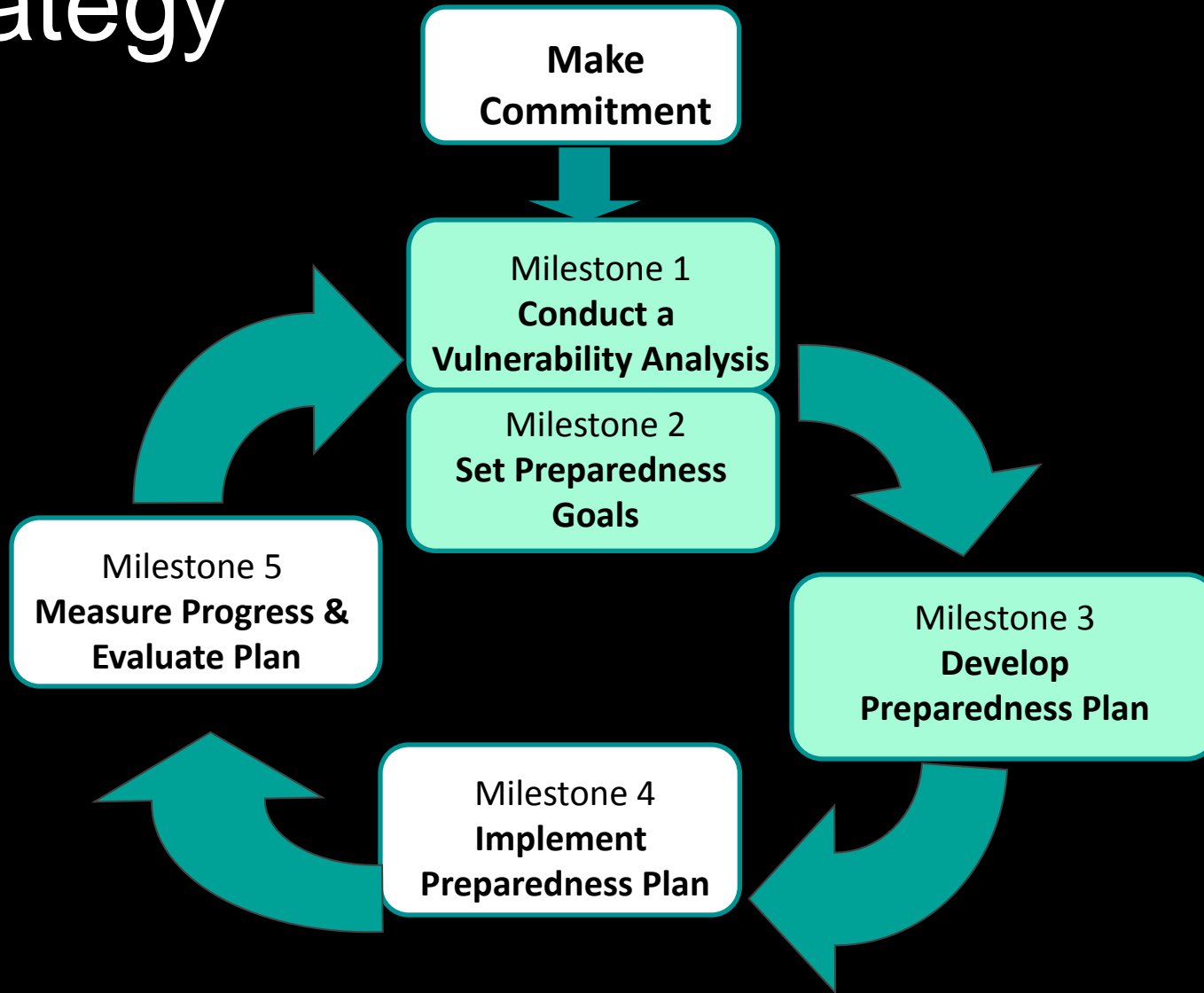
SANDAG: *SB375 Sustainable Communities Strategy; Regional Climate Action Strategy*

San Diego County Water Authority: *Master Plan*

US Navy Region Southwest



ICLEI San Diego Bay Sea Level Rise Adaptation Strategy



ICLEI San Diego Bay Adaptation Stakeholders

- Metropolitan Planning Organization (SANDAG)
- Caltrans, District 11
- San Diego Airport Authority
- Metropolitan Transit System
- San Diego Gas & Electric
- US Navy
- City Center Development Corporation
- Urban Land Institute
- Building Industry Association
- Water Quality Control Board
- Port Tenants Association
- North County Cities
- Environmental Health Coalition
- Wildcoast
- Coastkeeper
- Surfrider Foundation
- Sierra Club
- CalCoast
- CA Coastal Commission
- Army Corps of Engineers
- California Fish and Game
- US Fish and Wildlife
- State Lands Commission



SPAWAR Analysis of Vulnerabilities



Naval Base Coronado serves a critical service to the US Pacific Fleet.



Erosion already threatens training areas and facilities in Marine Corps Base Camp Pendelton



Other Adaptation Planning Efforts



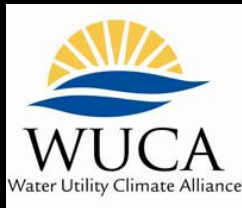
- City of Chula Vista- Climate Adaptation Strategy



- City of San Diego- Climate Action Plan Update



- Port of San Diego – Climate Action Plan



- San Diego County Water Authority - WUCA
...Other upcoming Climate Action Plans

Challenges Ahead to Resiliency

- Public awareness & engagement – what is resiliency?
- Government budgets
- Role of philanthropy as a catalyst, not single source
- San Diego highest per capita emissions in state



The San Diego Foundation's *Climate Initiative*



Thank you!

Nicola Hedge: Manager, Climate Initiative
nicola@sdfoundation.org