

# *Fort Bragg - Sustainability in the Sandhills of North Carolina*



*Preserving Our Resources Today to Secure Our Legacy Tomorrow*



# An Average Day at Fort Bragg

(5<sup>th</sup> largest city in the state of North Carolina)

- ✓ A supported population of **261,000** personnel
- ✓ **22,700** housing units are managed and serviced
- ✓ **1,500** miles of paved road traveled (same distance as Boston, MA to Miami FL).
- ✓ **342** police, fire, and medical emergency responses are performed
- ✓ **200** patients are treated in the medical center emergency room
- ✓ **1,670** children at **11** facilities are provided child and youth services
- ✓ **5,070** students at **10** on-post schools are provided elementary and secondary education
- ✓ **10,000** Soldiers are trained using, ranges, drop zones, and training areas
- ✓ **142,000** vehicles enter the Installation
- ✓ **12,176** meals are served at **20** dining establishments
- ✓ **\$1.5 Million** in retail sales are generated
- ✓ **\$26.3 Million** in economic impact is generated in local economy





# Fort Bragg is more than a City...





# What is sustainability to Fort Bragg ?

A **pro-active** approach to ensure the **long-term viability** and integrity of the mission by **minimizing** resource needs, **reducing** environmental impacts, and **managing** resources while **providing realistic training environments**.

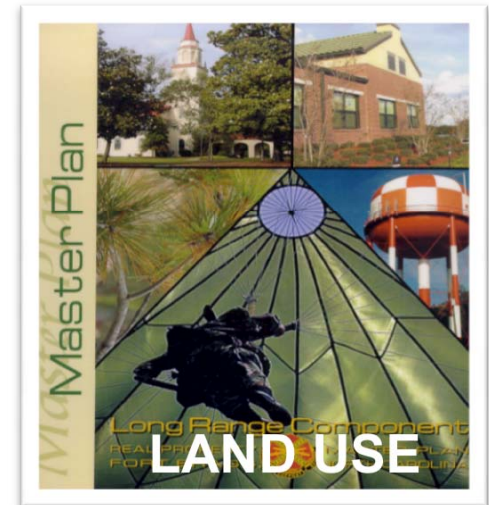
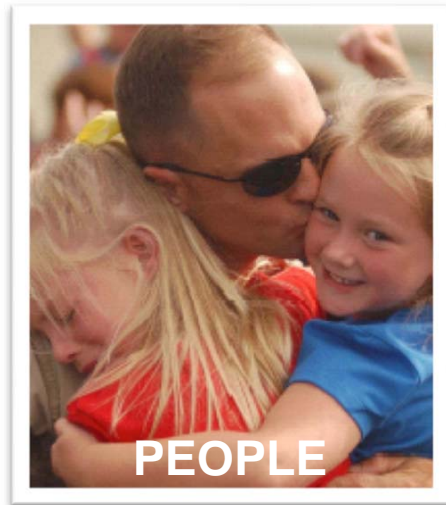


# Why is it Important to the Army?



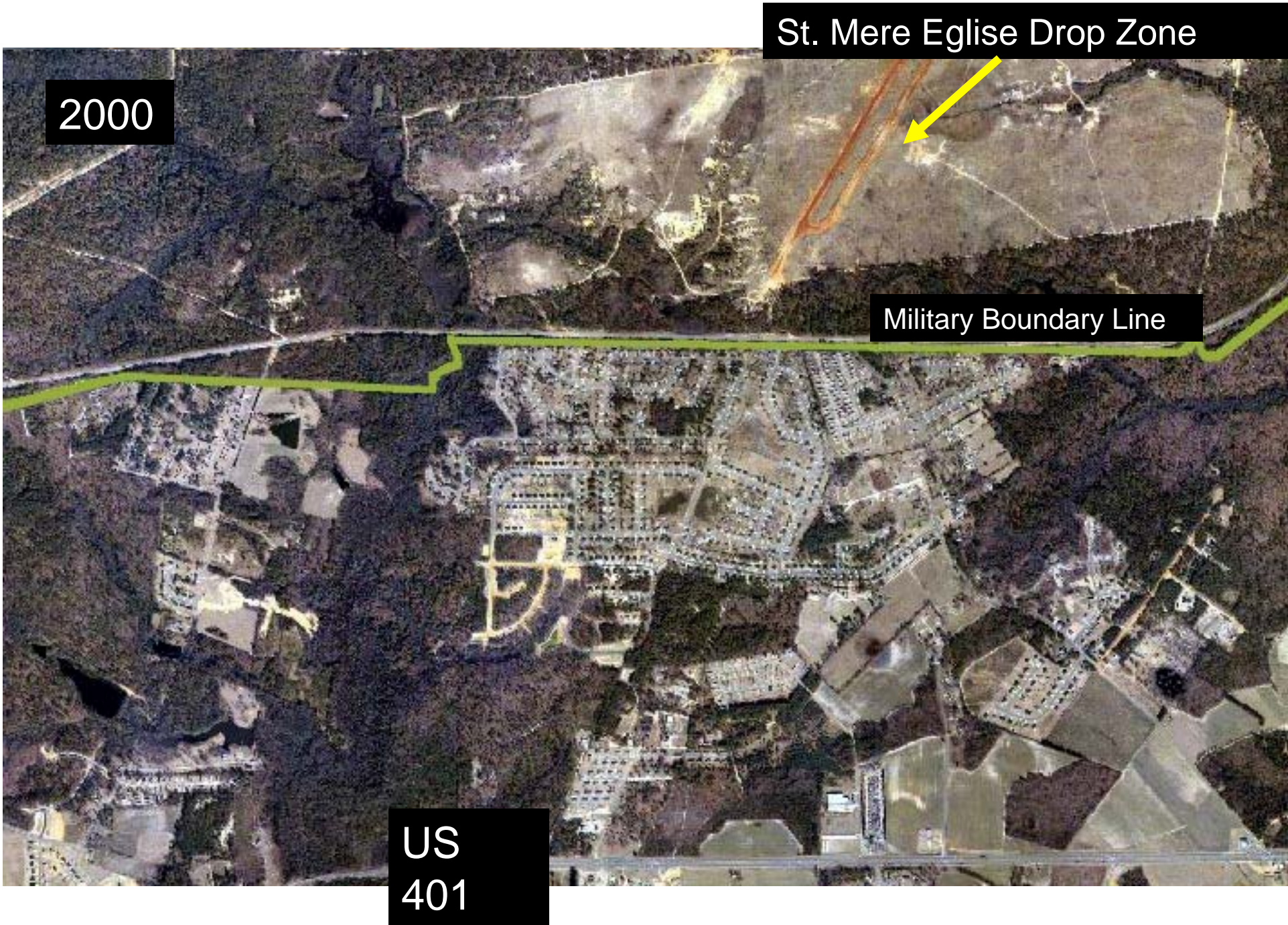


# Fort Bragg Sustainability Objectives



A photograph of a forest with tall pine trees and a field of tall, dry grass in the foreground. The text is overlaid on the lower half of the image.

***Compatible Land Use –  
Leveraging Partnerships***



2000

St. Mere Eglise Drop Zone

Military Boundary Line

US  
401





# Background

1991 -US Fish and Wildlife Service (USFWS) Jeopardy Opinion closes Fort Bragg ranges due to Red Cockaded Woodpecker (RCW), a federally protected Endangered Species.

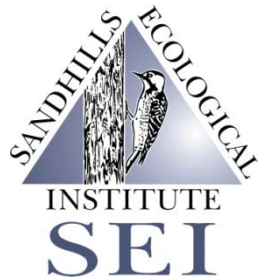
1992 -1995 - Army begins the “Sandhills Dialogue “ with local municipalities and landowners to develop a landscape approach to protection and management.

1995 – Established Cooperative Agreements with The Nature Conservancy & USFWS to conserve and protect lands.

2000 - NC Sandhills Conservation Partnership (NCSCP) formally established and initiates the implementation of a landscape approach for protection and management.



# North Carolina Sandhills Conservation Partnership (NCSCP)



## PRIMARY STAKEHOLDERS



# Other Stakeholders

## STATE AGENCIES

- NC Department of Commerce – DCA
- NC Department of Agriculture and Consumer Services
- NC Department of Transportation

## COUNTIES AND LOCAL GOVERNMENTS

- Regional Land Use Advisory Commission
  - County
  - Municipal

PRIVATE LANDOWNERS  
CONSULTING FORESTERS  
REALTORS





# Mission of the NCSCP

“Coordinate the development and **implementation** of conservation strategies for the red-cockaded woodpecker, other native biota, longleaf pine and other ecosystems in the Sandhills of North Carolina **compatible with the land use objectives of the partners.**”

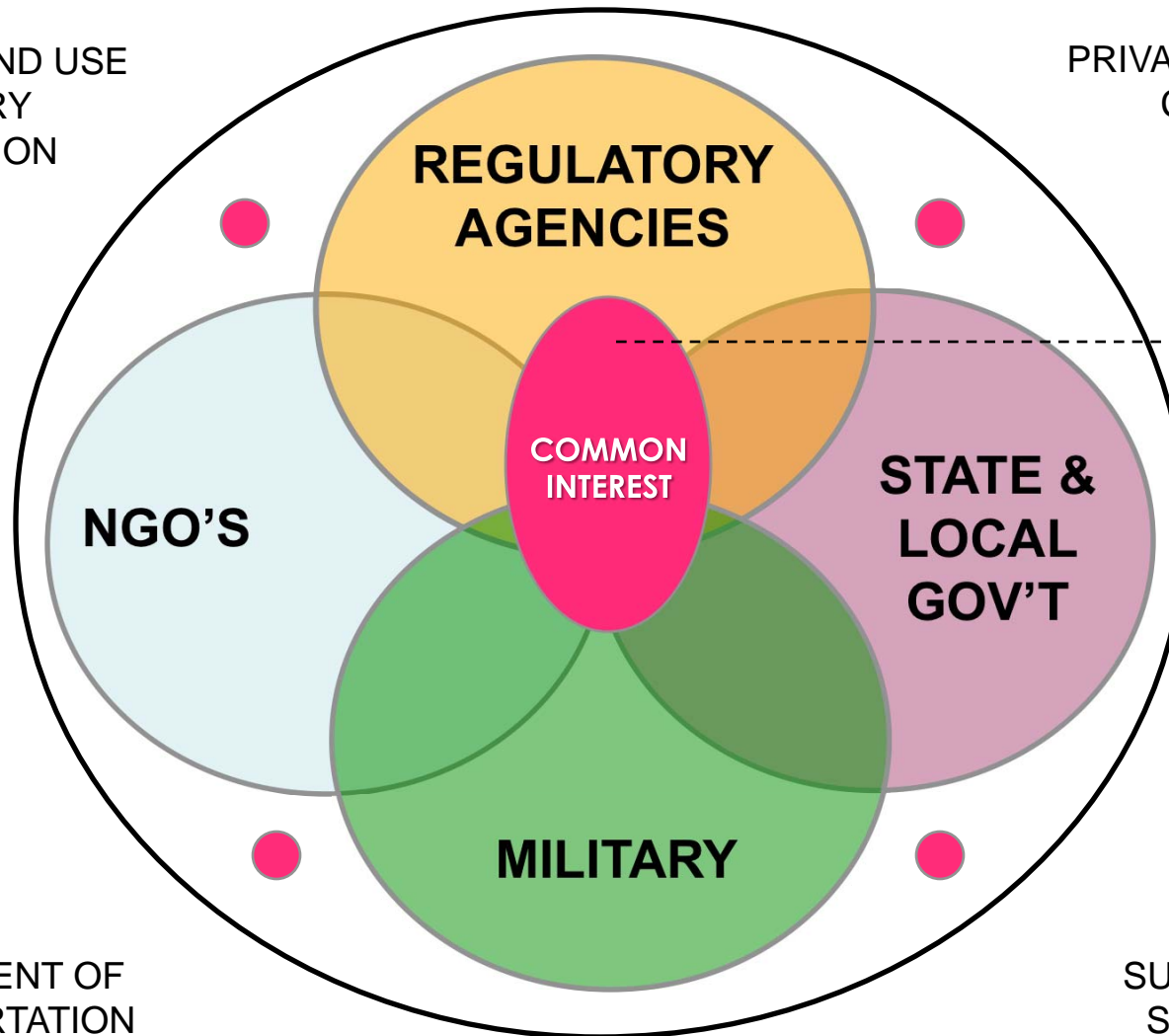




# Compatibility among Partners is the key to Success

REGIONAL LAND USE  
ADVISORY  
COMMISSION

PRIVATE LANDOWNERS  
CONSULTING  
FORESTERS



Protect and manage  
Longleaf Pine  
habitat and  
other unique  
natural  
communities

DEPARTMENT OF  
TRANSPORTATION

SUSTAINABLE  
SANDHILLS



# Our Strategy

- Identify and prioritize conservation areas
  - ✓ Species, natural communities
  - ✓ Buffer and connect priority areas
- Conserve and manage important parts of the landscape
- Identify and engage potential partners
  - ✓ Coordinate planning / projects
- Communication and Outreach





# Accomplishments

- ✓ Acquired over **25,000 acres** of land for habitat protection/training/public use
- ✓ Leveraged over **\$50 Million dollars** (federal ,state and local)
  - Recovered the Sandhills population of Red Cockaded Woodpeckers
- ✓ Protected over **9 miles** of Fort Bragg's boundary and other important training areas
- ✓ Created Carver's Creek State Park in the Sandhills
  - 1<sup>st</sup> State park in Cumberland County
- ✓ Added significant acreage to the Sandhills Game Land
  - increased military training area
  - increased recreational/hunting areas



# Lessons Learned

- ✓ Army Conservation Partnerships Enhance Readiness
  - Conservation partners are often our strongest allies
- ✓ Partner with others based on shared objectives, funding opportunities, and mutual benefits
- ✓ Recognize that every partner has a somewhat different agenda. Accentuate overlaps and accept differences.
  - Look for the Win, Win
- ✓ Multiple purposes can be served through land protection
  - Compatible development/smart growth
  - increase recreational opportunities
  - Green Space and improved quality of life





# Evolution of Sustainability on Fort Bragg



1990: CONFLICT



2000: COLLABORATION



IN 2011, SUSTAINABILITY BENEFITS **EVERYONE**

# Looking through the lens of the Triple Bottom Line...



Mission



Environment



Community