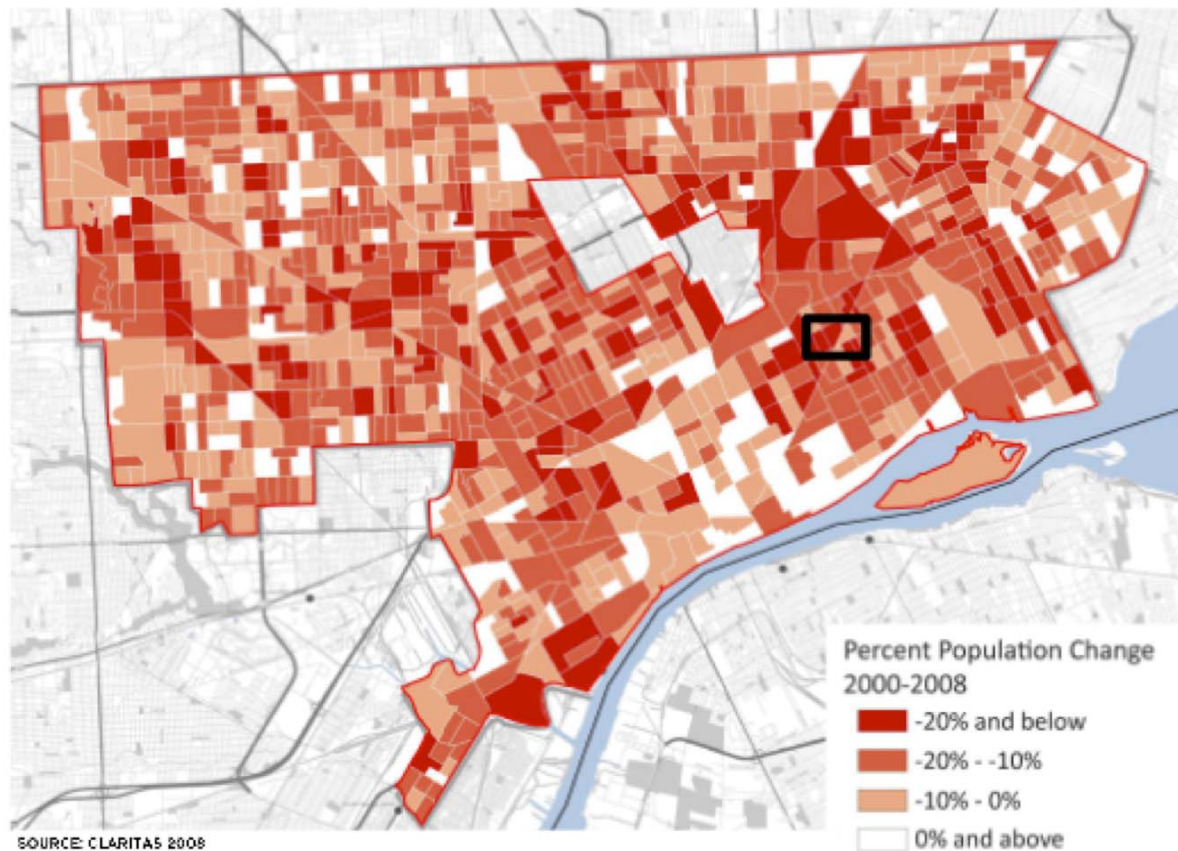


Building a Sustainable Community in
Detroit: Whether inclusive
community engagement is necessary
for just and smart growth?

Who will live here?



Percent Population Change 2000 - 2008



SOURCE: CLARITAS 2008

WHY CHANGE?

85%

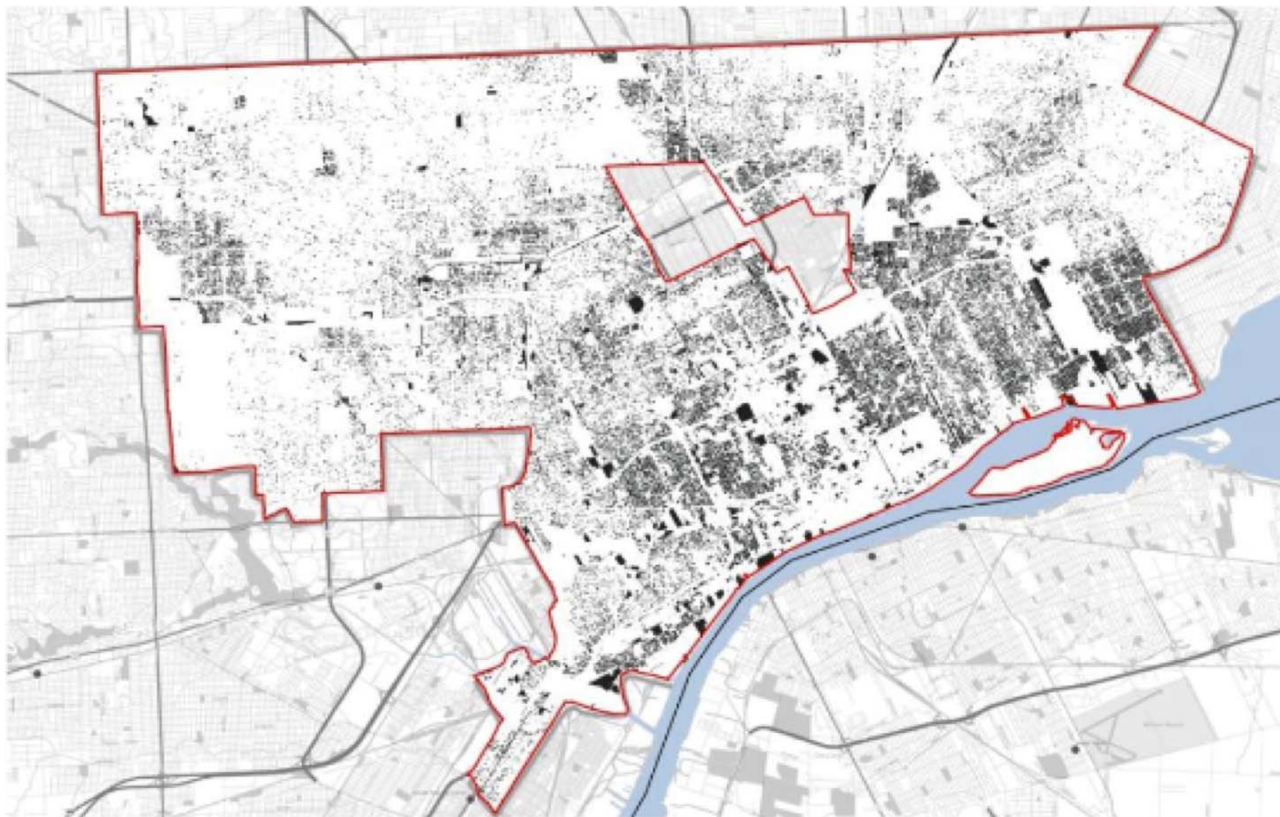
of the city's land area has
experienced continued
population decline over
the last decade.



Where will people live?



Vacant Land Area is Overwhelming



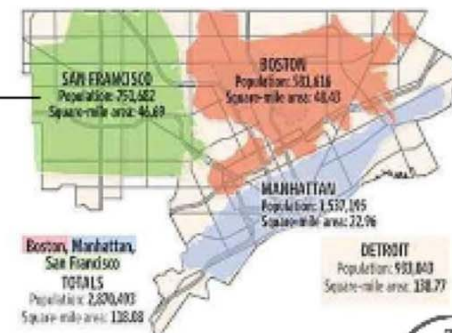
SOURCE: PADD 2000

WHY CHANGE?

40

**VACANT
SQUARE
MILES**

This is almost equivalent to the total land area of San Francisco (47 square miles).



SOURCE: UDM



Corktown's ideal location

Living in the Map: Detroit

alphasandbox

Every inch of the Motor City, online and interactive

Map

About

Me

Corktown

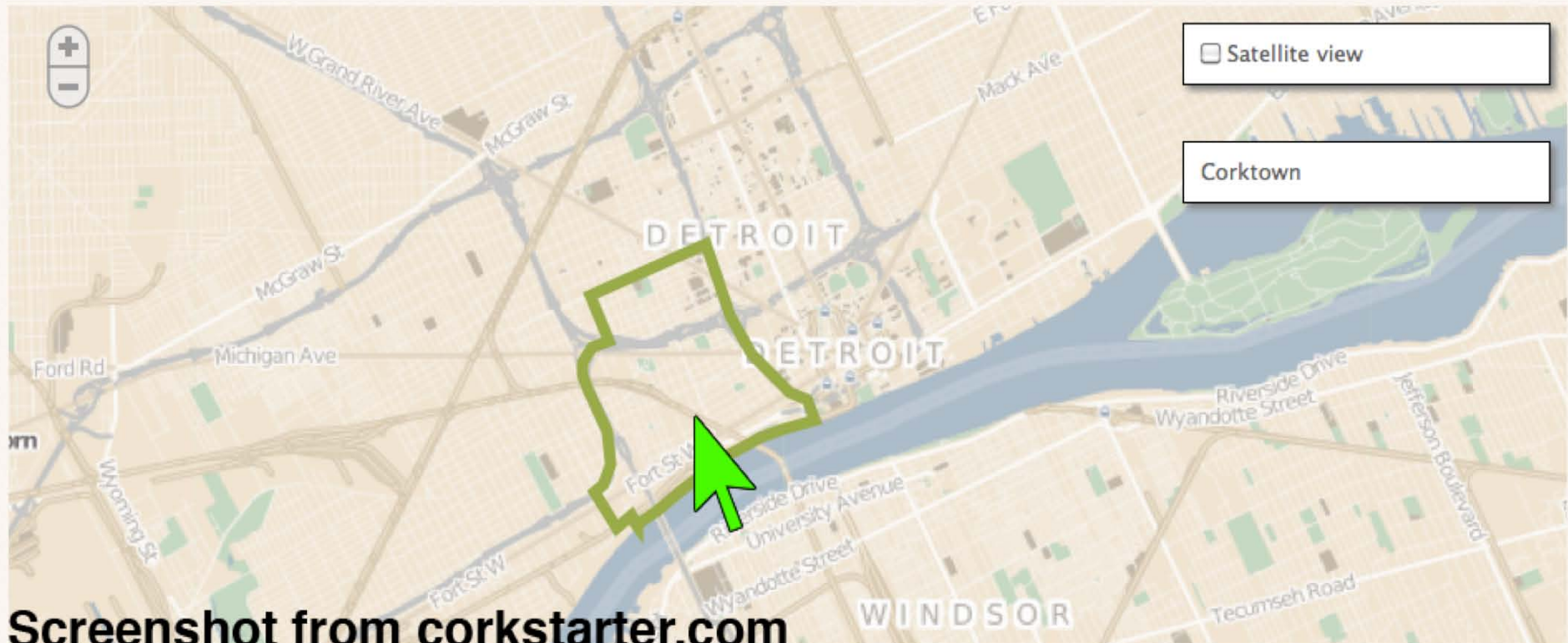
Edit

Add to My Places

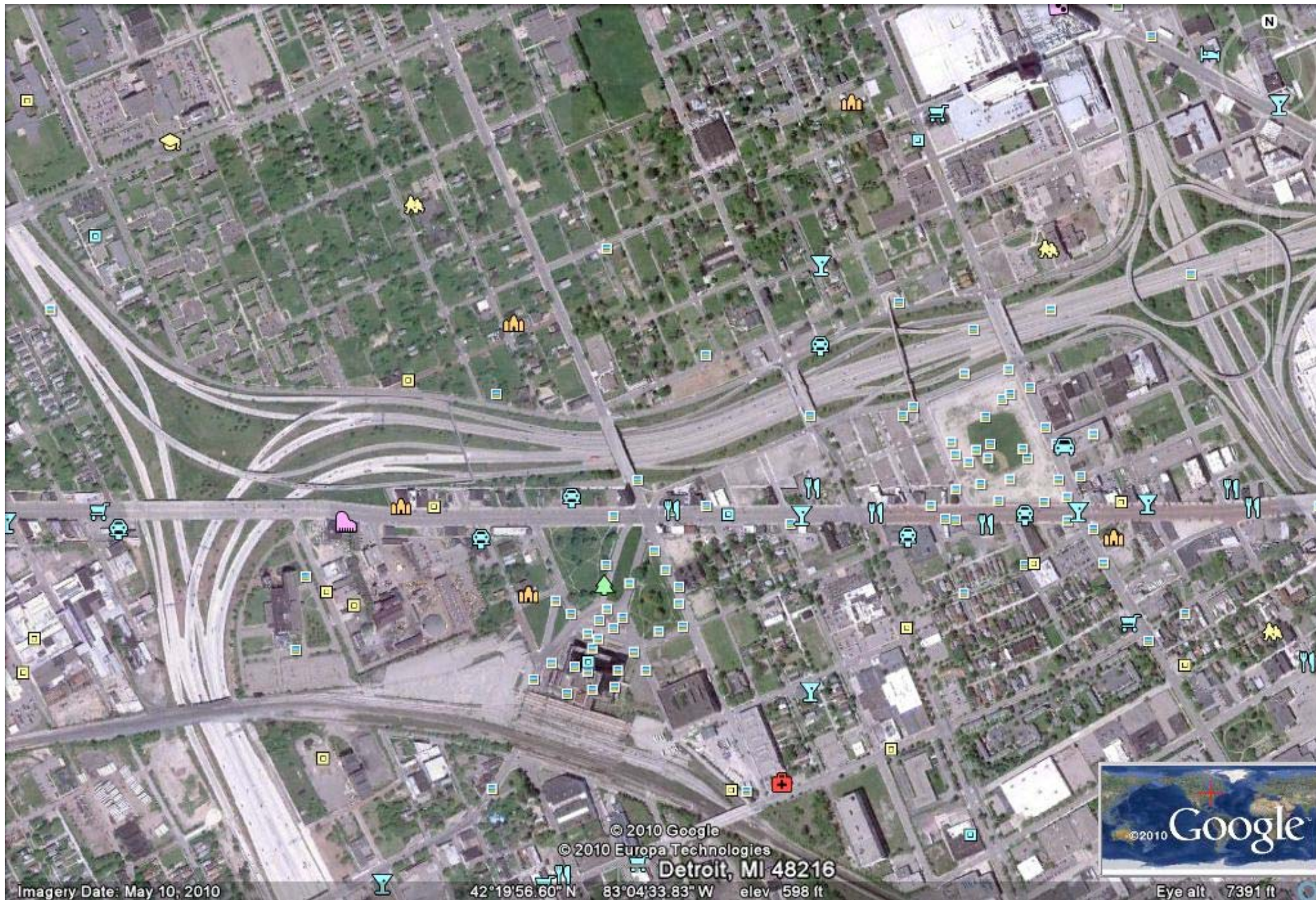
Fund a project

Search

Welcome! Zoom in to explore the matrix of land parcels. We'll be adding more info and features soon, and do [let us know](#) if there's something you want to see! [Hide this message](#)



Screenshot from corkstarter.com



© 2010 Google
© 2010 Europa Technologies

Detroit, MI 48216

Imagery Date: May 10, 2010

42°19'56.60" N 83°04'33.83" W elev 598 ft



Eye alt 7391 ft

WHAT MATTERS? How to build a sustainable community

Existing Residents – People

- Housed / unhoused
- Demographics

History / Culture







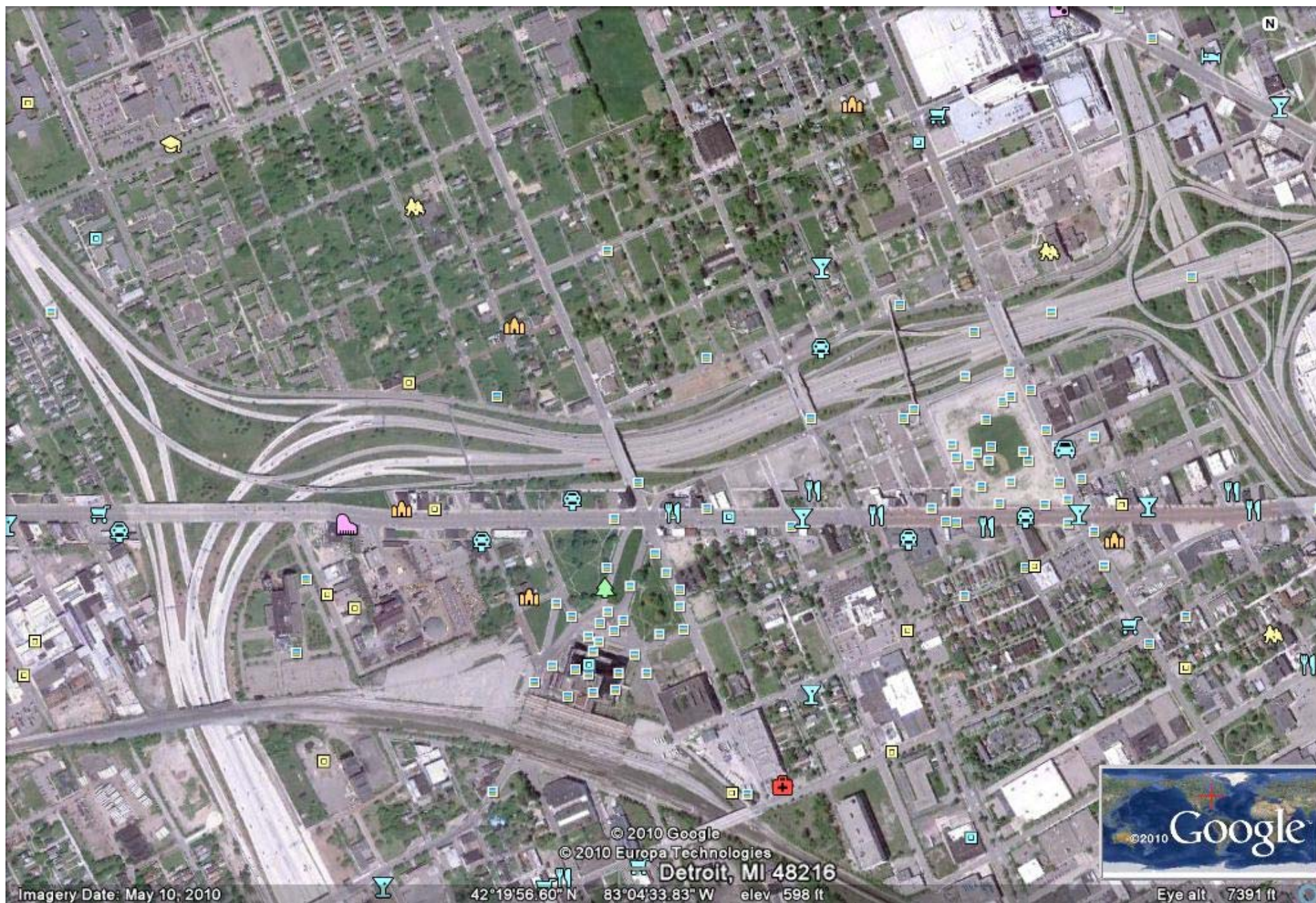
when done wrong

Detroit Free Press article headline, January 31, 2010:
Corktown Resident Attacked Homeless Man,
prosecutor says.

The Opportunity: Preparing for future

- Open Spaces
- Stories
- TimeBanks
- Urban Farming
- Land Trust
- Restorative Justice
- Community Courts

www.soulofthecommunity.org



© 2010 Google
© 2010 Europa Technologies

Detroit, MI 48216

Imagery Date: May 10, 2010

42°19'56.60" N 83°04'33.83" W elev 598 ft



Eye alt 7391 ft

Engagement in Corktown

Historically

Corktown Residents' Council

Imagination Station