

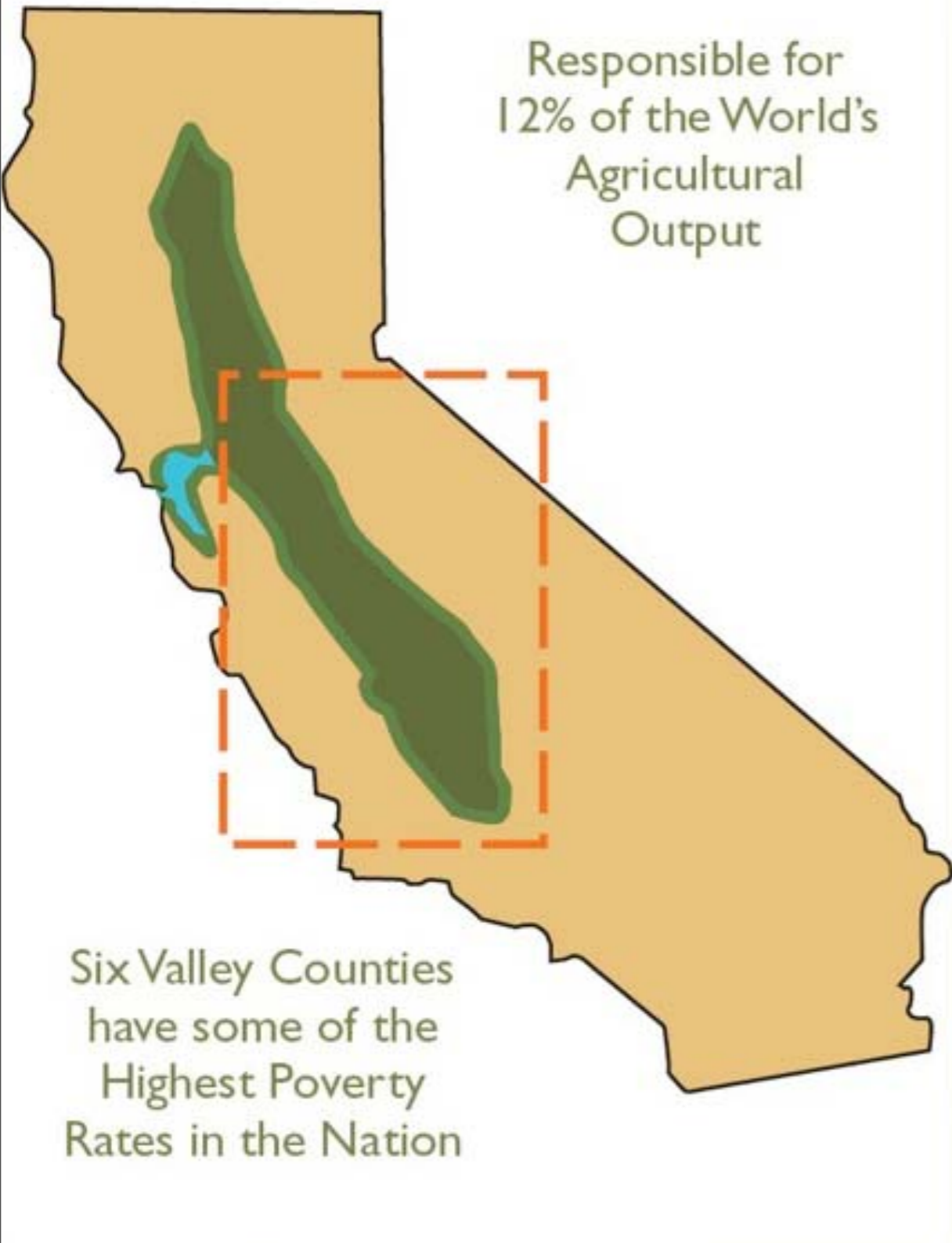
Making a Lot with a Little: Long Term Sustainability Strategies for Rural Communities

New Partners for Smart Growth

February 4th, 2011



Stefan Pellegrini, AICP, LEED AP
Principal



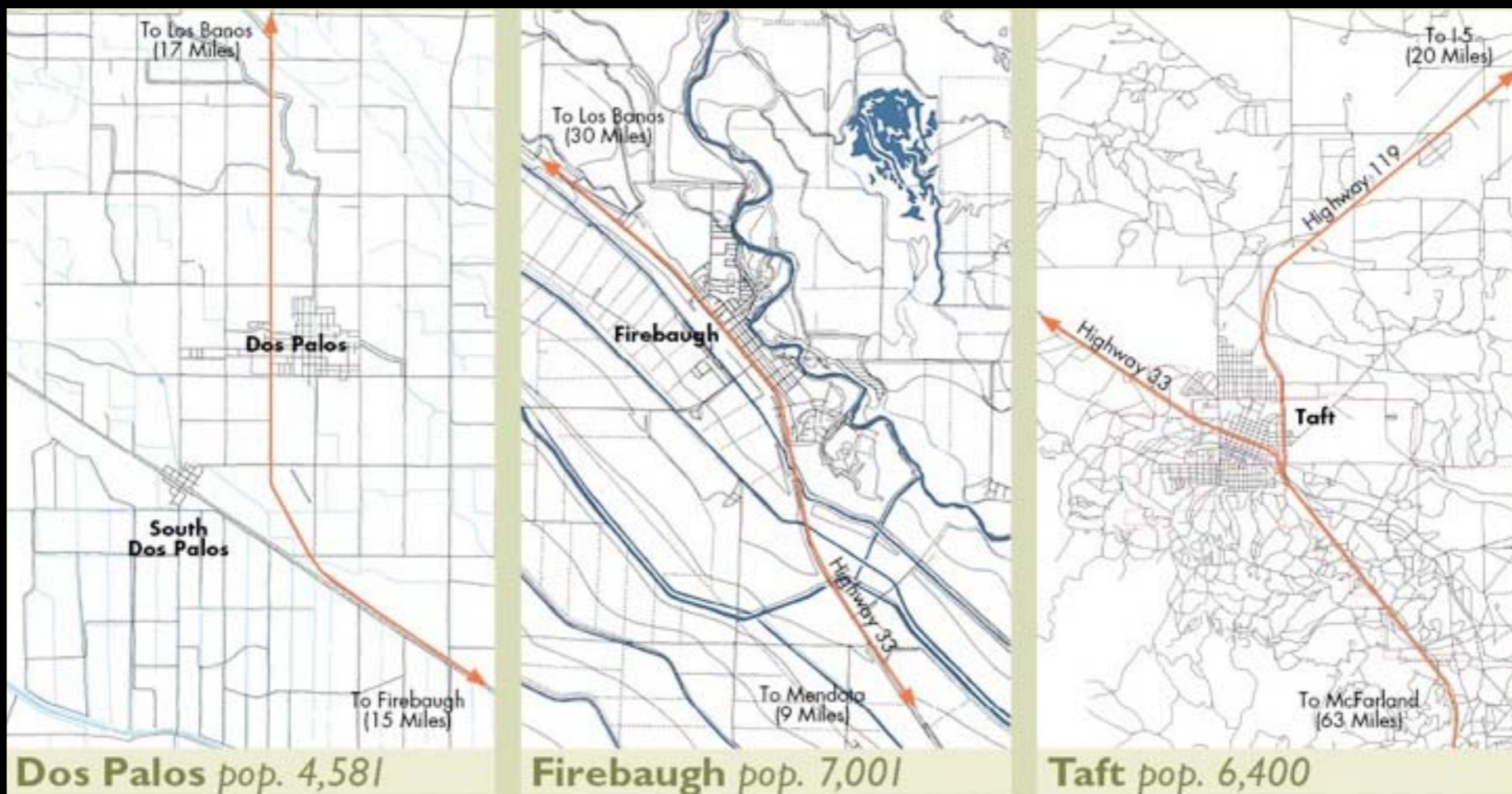




Image Credit: California High Speed Rail Authority





Diabetes • Obesity • Asthma • Water Quality • Lack of Public Space



Food Insecurity • Culture of Disinvestment • Foreclosure • Poverty



Entitled



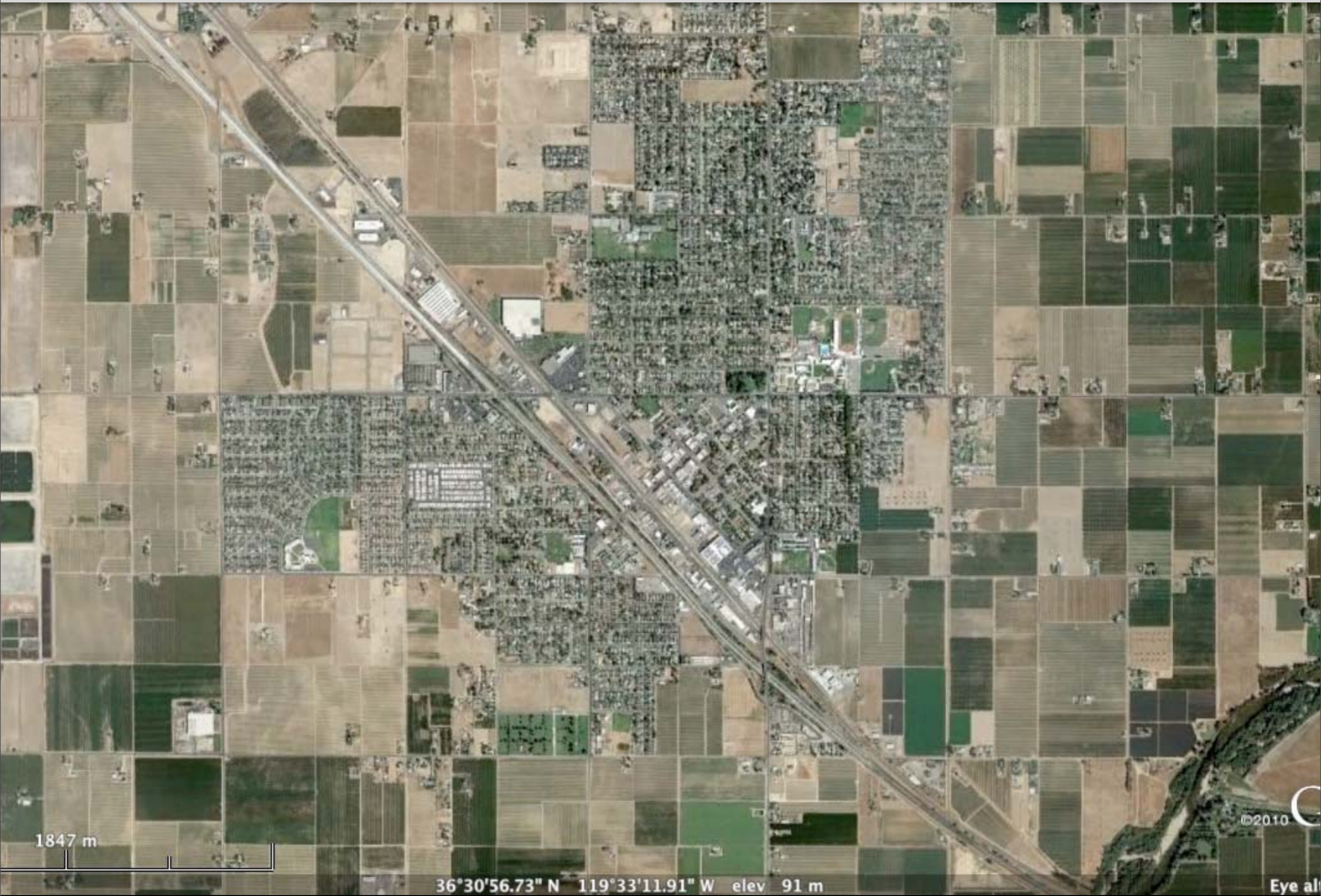
Proposed



Unbuilt Subdivisions *Delano*



New Framework *Delano*





Thursday, March 3, 2011

TRADITIONS







1865 m

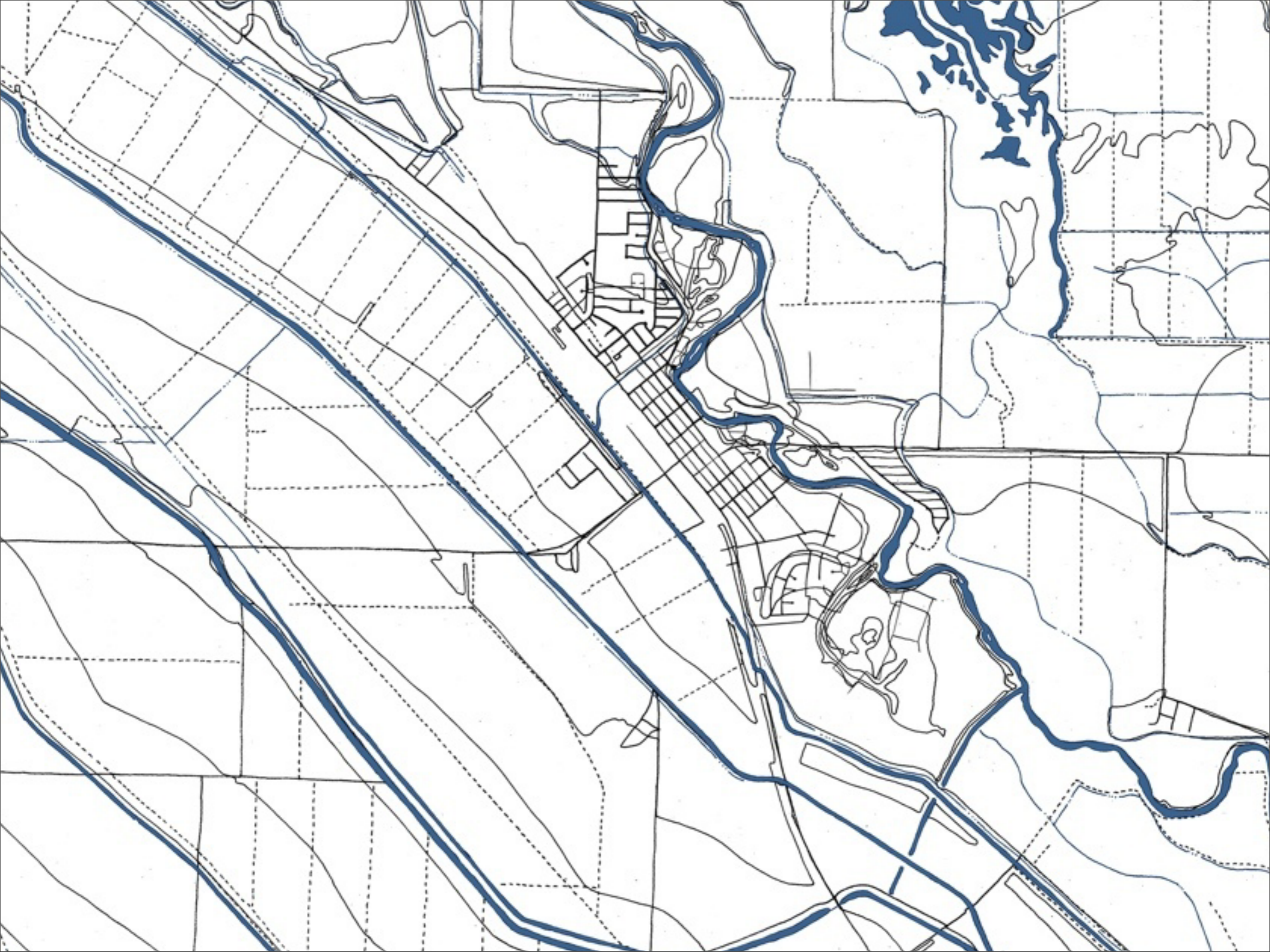
Image © 2011 DigitalGlobe

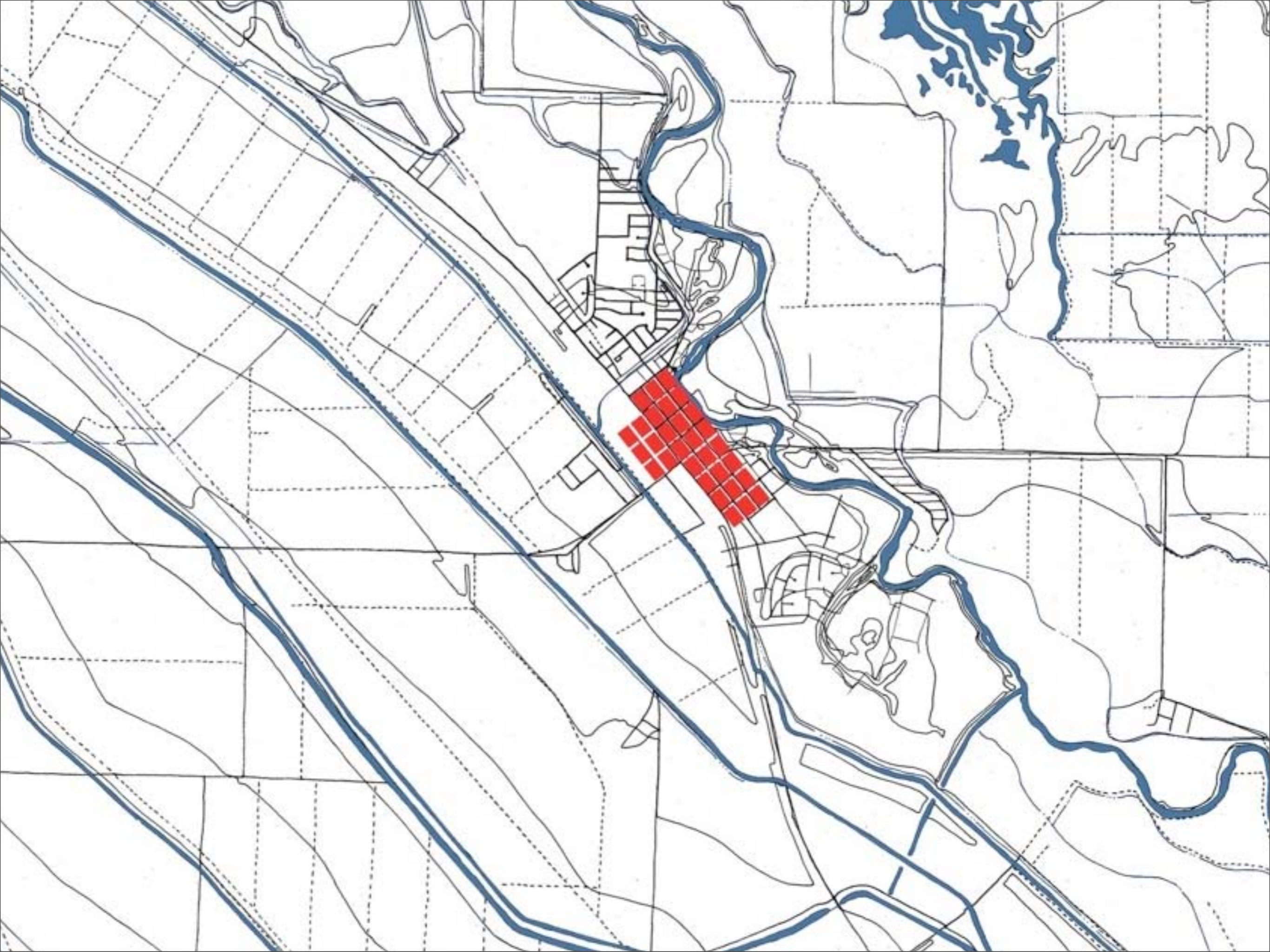
©2010

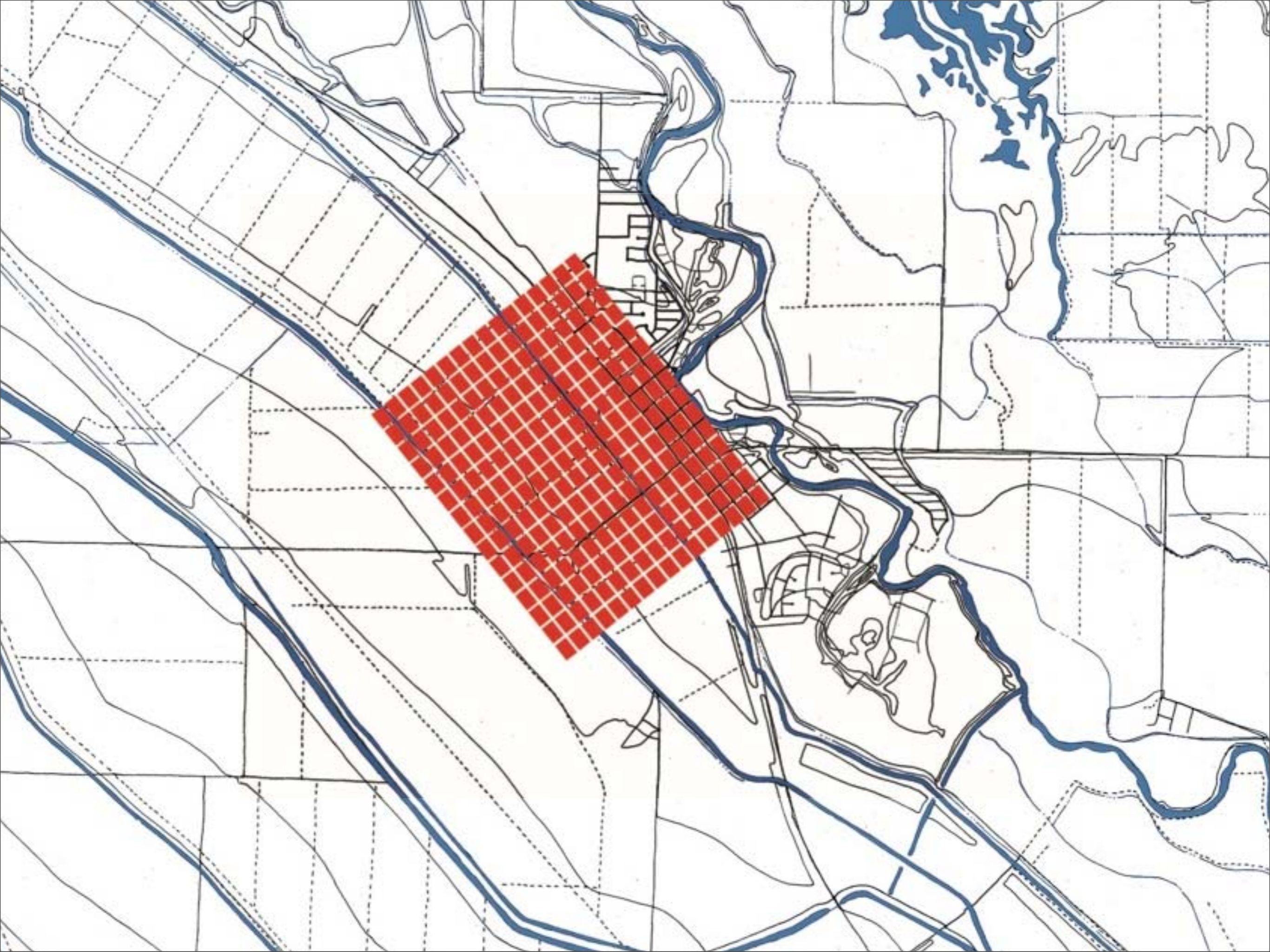
25, 2009

36°51'34.08" N 120°27'21.63" W elev 45 m

Eye al









Thursday, March 3, 2011



MEN'S WEAR
ZATARI
WOMENS

DEPT

Video
El
VIDE

Just
VIDE
TURISTAS



Thursday, March 3, 2011



Thursday, March 3, 2011



Thursday, March 3, 2011









Thursday, March 3, 2011

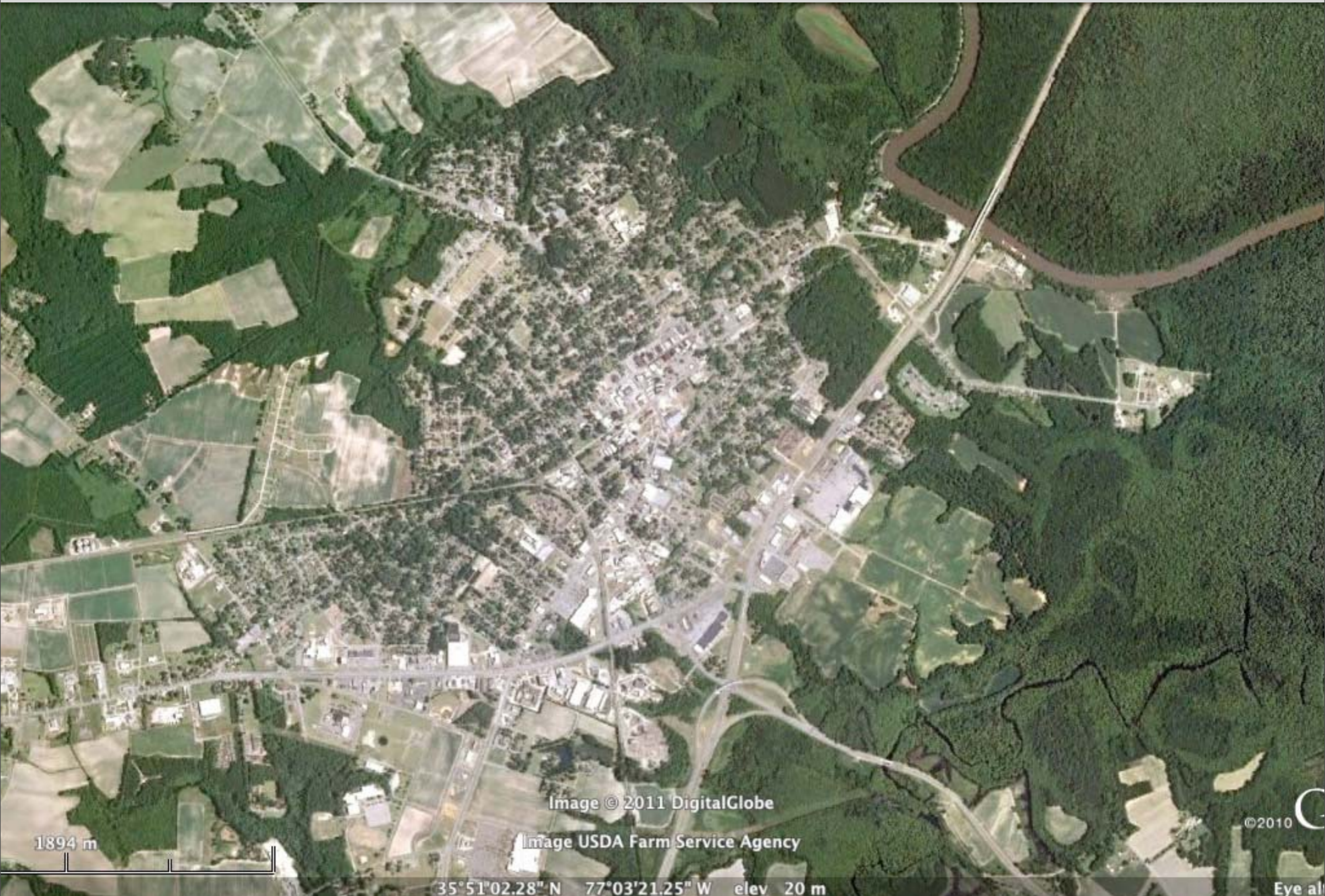


1886 m

36°36'23.63" N 120°11'18.99" W elev 52 m

©2010

Eye al



1894 m

Image © 2011 DigitalGlobe

Image USDA Farm Service Agency

©2010

35°51'02.28" N 77°03'21.25" W elev 20 m

Eye al



- Responding to and Learning From Historic Form and Character



- Focusing on Practical, Design-Based, Innovative Solutions



- Addressing Capacity Issues and Challenges

Thank You

Stefan Pellegrini, AICP, LEED AP
Principal
stefan.pellegrini@opticosdesign.com

Opticos Design, Inc.
www.opticosdesign.com



Acknowledgements

Local Government Commission
Livable and Walkable Communities
Institute

City of Kingsburg
City of Firebaugh
Madera County
City of San Joaquin