

Southern Rural and Urban Sustainability Projects

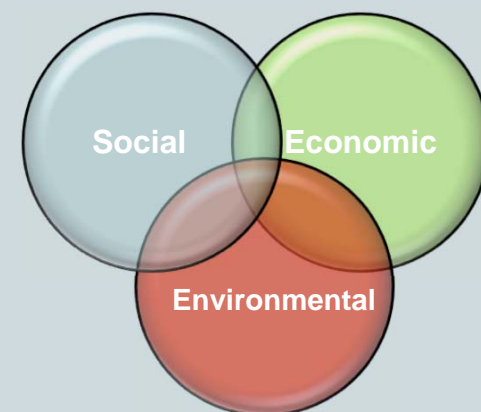


**PROGRESS WITH THE PARTNERSHIP
FOR SUSTAINABLE COMMUNITIES**

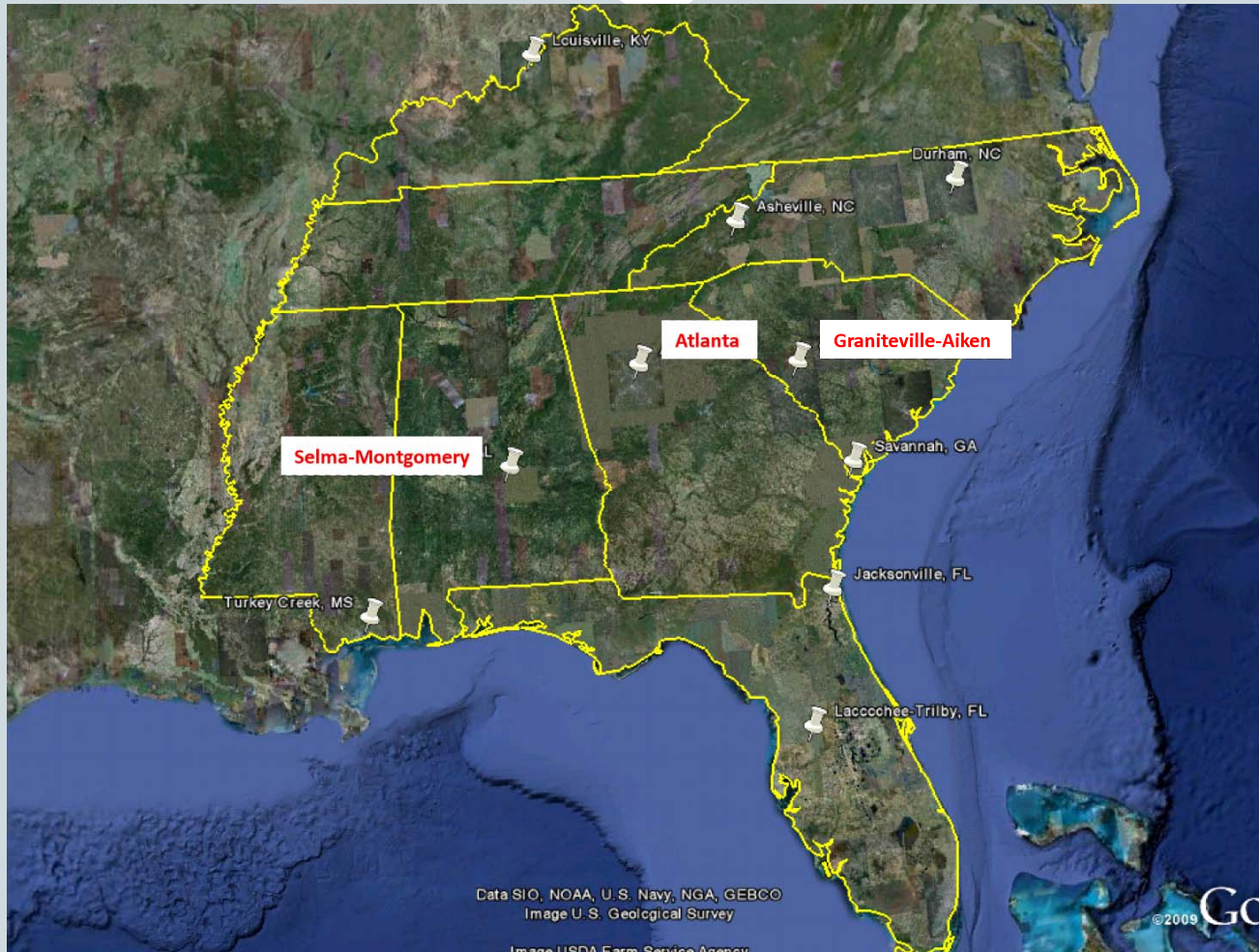
Region 4 EPA and Partners Collaborate



- **American Recovery and Reinvestment Act**
 - Provided funding to agencies to invest in housing, roads, environmental projects
 - Provided great opportunity to cooperate more than usual
- **Interagency collaboration initiated in early 2009**
- **Criteria for selection of projects**
 - Vulnerable community present
 - Opportunity for TOD
 - Potential to establish “green” jobs
 - Multiple agencies investing
 - Mixture of rural, urban and suburban
 - Within driving distance of Atlanta
 - Reasonable timeframe for completion



2010 Project Locations



Partnership for Sustainable Communities: Beginnings



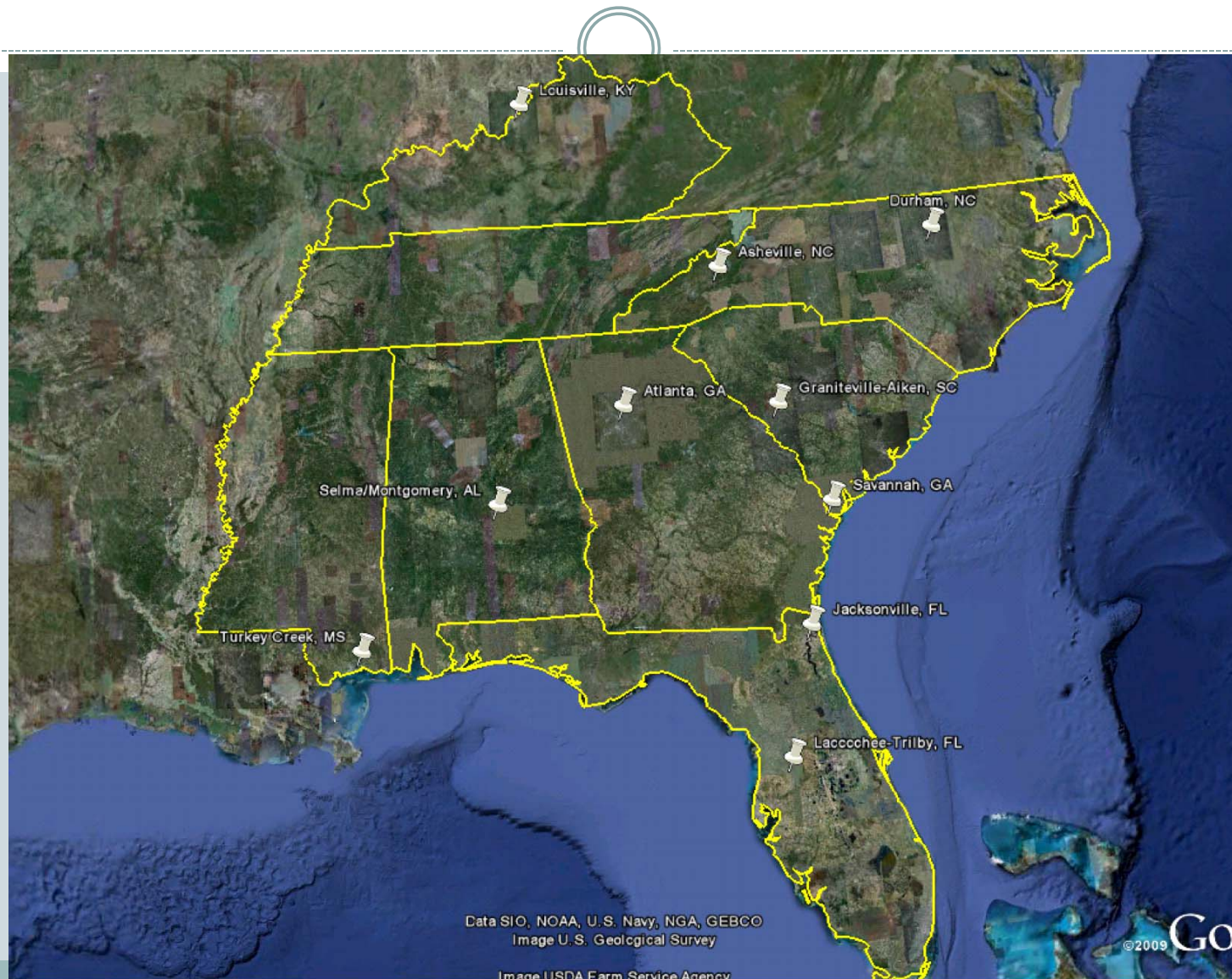
- Began June 2009 with agreement between HUD, DOT and EPA
- Federal agencies to work more efficiently and to cooperate more fully in providing services to public:
 - Provide More Transportation Choices
 - Promote Equitable, Affordable Housing
 - Enhance Economic Competitiveness
 - Support Existing Communities
 - Coordinate and leverage federal policies and investment
 - Value Communities and Neighborhoods

Partnership Projects and Process



- **Project beginnings**
 - Agencies met to discuss potential activities
 - Engaged contacts in each location
 - Discussed collaboration potential, interest
- **Developing partnerships**
 - Meetings
 - “Visions”
 - Project outlines
 - Committed to “long term” involvement

Nine Projects and Counting!

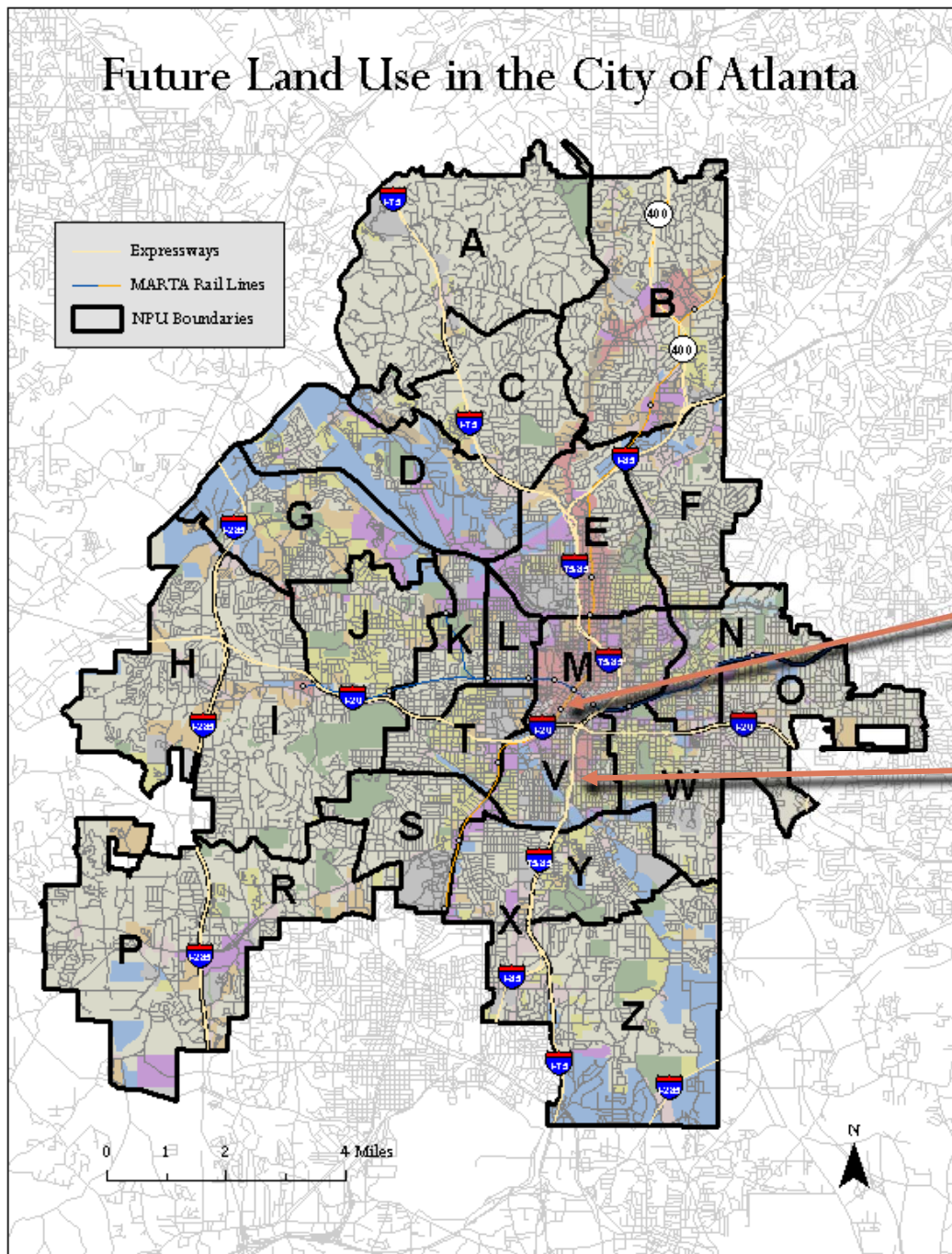


South Atlanta Project



**PROGRESS WITH THE
PARTNERSHIP FOR
SUSTAINABLE COMMUNITIES**

Future Land Use in the City of Atlanta



Downtown area

Neighborhood Planning Unit V

NPU-V



NPU-V Challenges/Opportunities



- Area was center of housing foreclosure crisis
- Several brownfield sites in vicinity
- Urban location with high unemployment
- Need for job training
- Environmental issues
- Multiple agency investments
- Met proximity goal



Project Partners

- Center for Working Families
- Annie E. Casey— Civic Site
- SNDSI
- Georgia Stand Up
- Partnership for the Preservation of Pittsburg
- Eco-Action SAFE— CARE
- Atlanta Beltline

- NPU-V
- City of Atlanta
- Atlanta Regional Commission
- Congressman Lewis
- Senator Isaakson
- HUD
- EPA
- DOL
- DOT
- EDA

Federal Actions To Date



- Meetings with EPA leadership and community
- BF—Targeted Brownfields Assessment
- New HUD Lead/Healthy Homes grants \$2.1M to City, \$800K to Center for Working Families
- Green jobs committee
- Inviting greater involvement by other partners—
FTA, Atlanta Regional Commission, FHWA,
Economic Development Administration

Partnerships: DOA, EPA, HUD



Partnerships: DOI, EPA,



Partnerships: HUD



Partnerships: Southface Energy Institute, DOE, HUD, EPA



My two favorite places



Partnerships: DOJ, HUD, EPA, DOE



Partnerships:

DOT
FTA



HUD
EPA



Partnerships: HUD, CDC



Southside Medical Center's Annual Back to School Immunization Drive

Report

August 2nd, 2010 12:16 pm ET

Like Be the first of your friends to like this.



Partnerships: FTD, DOT, EPA, DOC



Fort McPherson

Partnerships: DOA, HUD, DOC, DOT, DOI



Partnerships:



North Carolina and The Asheville Project



**PROGRESS WITH THE
PARTNERSHIP FOR
SUSTAINABLE COMMUNITIES**

North Carolina Regional Applicants for HUD Sustainable Communities Grants (2010)



2010 Regional Applicants:

- | | |
|-------------------------|--------------------|
| Western North Carolina | Kerr Tar Region |
| PART | Plant EAST |
| CONNECT Consortium | City of Wilmington |
| PRISM Research Triangle | |

Regions Planning to Apply in 2011:

- | | |
|----------------------------|----------|
| Rocky Mount-Edgecombe-Nash | BRAC-RTF |
|----------------------------|----------|

0 25 50 100 Miles



PTC G

Common Features



- 2-3 year process to prepare a Regional Plan for Sustainable Development
- Integrating transportation, land use, housing, infrastructure plans at regional scale as never before
- Extensive outreach, engaging groups often left out
- Use of metrics and modeling to compare scenarios
- Regional governance to build consensus, promote adoption and implementation
- Managing growth to help region's economic competitiveness

Piedmont Triad



- Lead applicant: Piedmont Authority for Regional Transportation (PART) - \$1.6 million
- Region hit hard by transition from old economy
- 'Sustainability Centers and Hubs' to revitalize distressed areas
- Healthy communities element
- Partners committed significant leverage
- Grassroots outreach by WSSU, UNC-G, NCA&T

WNC Livable Communities Initiative



- Lead applicant: Land of Sky Regional Council – \$1.6 mil
- Builds upon existing local and regional plans/strategies and weaves them into one actionable implementation strategy
- “Double reality check” among region’s communities
- Incorporates EDA CEDS priorities into Livability Principles
- Energy economy- a core focus
- Some funding will fill regional data/information gaps needed to create an integrated sustainability plan

DOT Tiger II Planning Grants



- **City of Asheville**

- \$850,000
- Development of East Riverside
- Multi-modal transportation
- Affordable housing

- **City of Lexington**

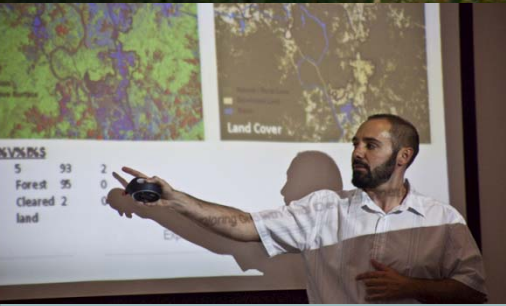
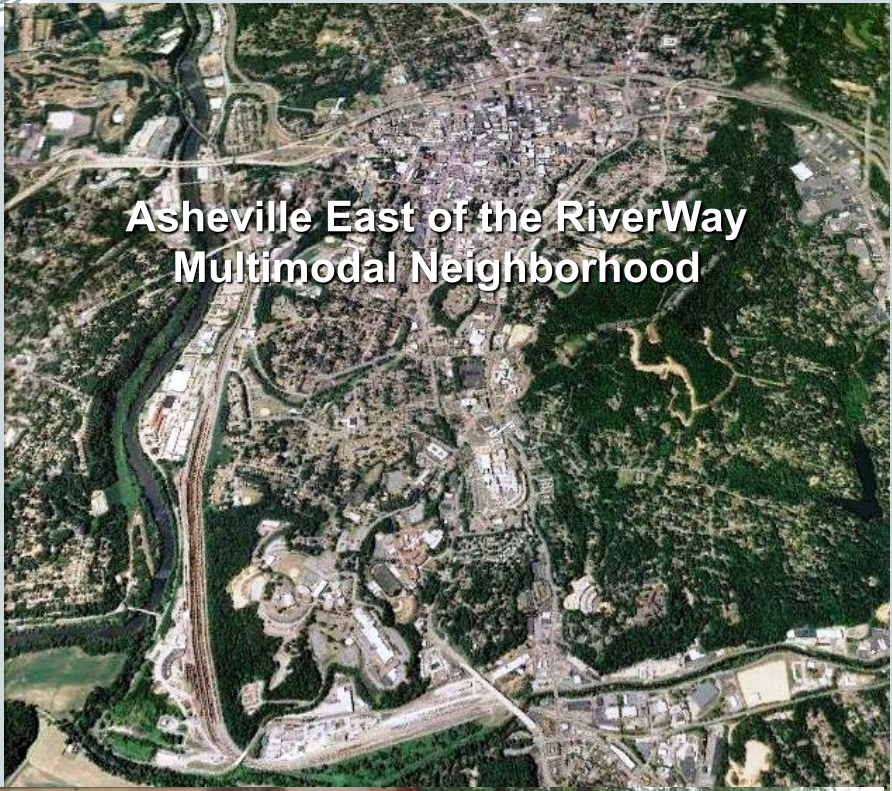
- \$700,000
- Multi-modal transit station
- Connecting Winston-Salem to Raleigh/Charlotte rail corridor (2015)
- Passenger station and hub for bus, taxi, bicycle and pedestrian networks

Building Momentum in NC

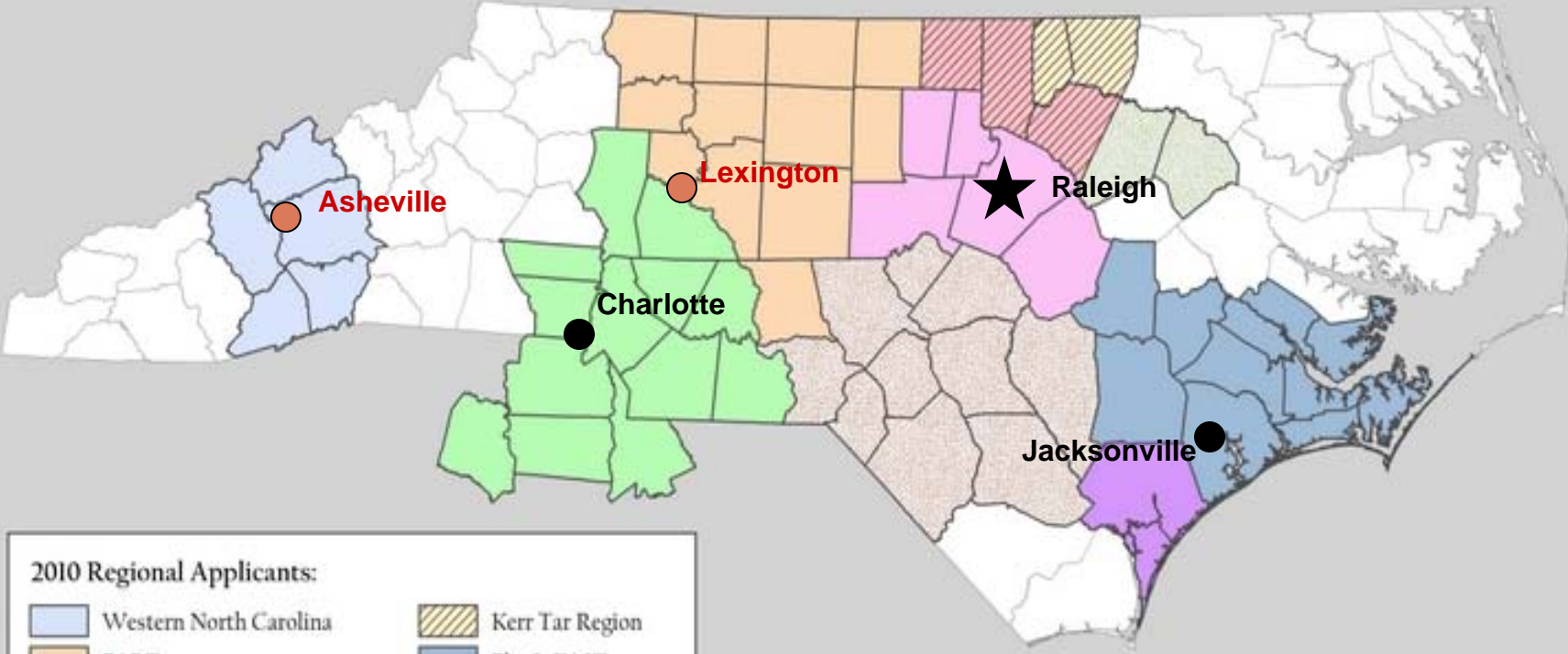


- North Carolina recognized for commitment of DENR, NCDOT, Commerce Secretaries – Sustainability Task Force legislation
- Regions mobilized to pursue common interests, engage with state agency staff
- HUD-funded agencies pledged support for Livability Principles in 2011 Consolidated Plans
- Other departments looking at how their programs can align and support – Interagency Leadership Team

Keeping Momentum in NC- Regional and Local Scale



NC Geographic Comparison- Tiger II Funded Cities in Red

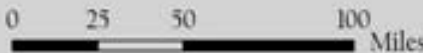


2010 Regional Applicants:

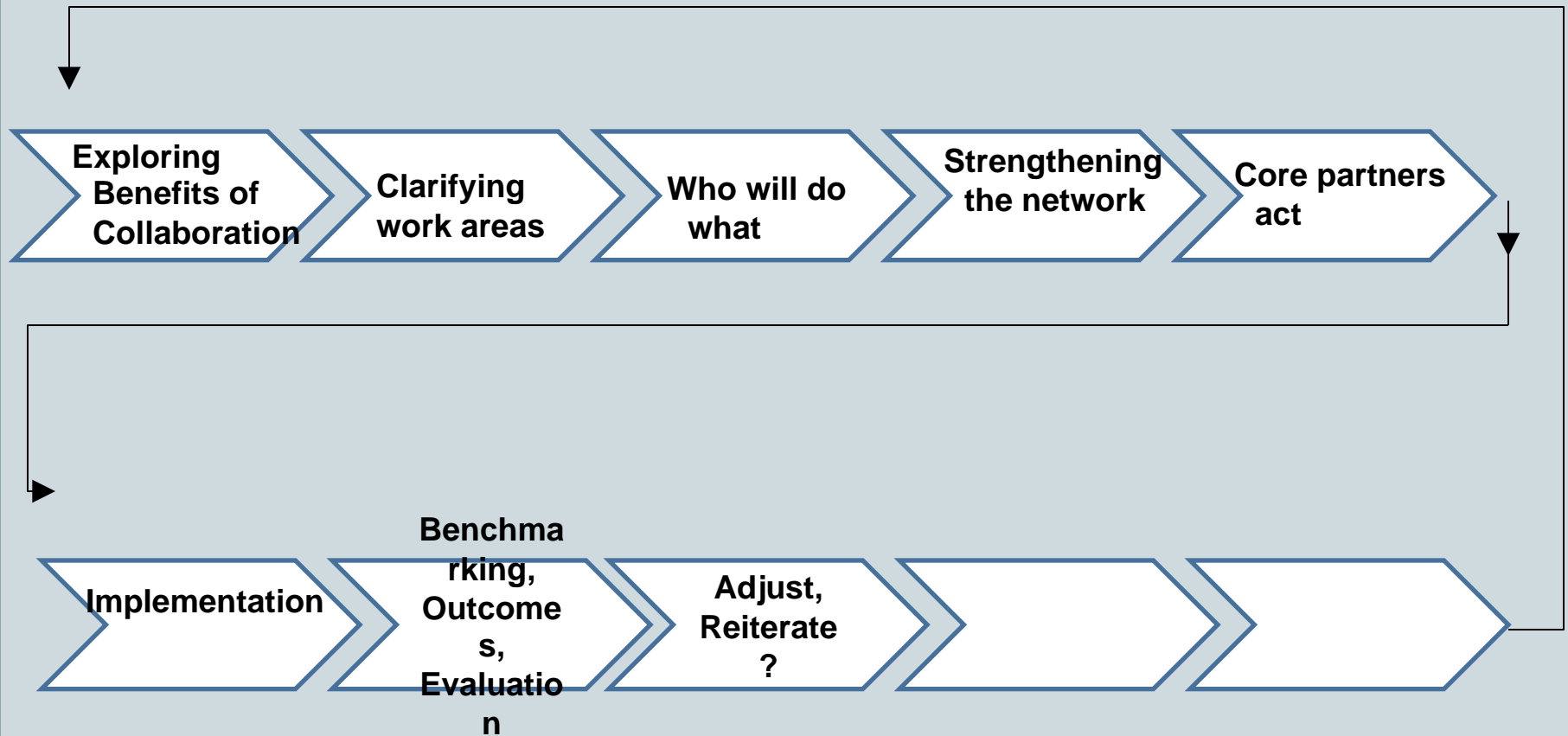
- Western North Carolina
- PART
- CONNECT Consortium
- PRISM Research Triangle
- Kerr Tar Region
- PlanIt EAST
- City of Wilmington

Regions Planning to Apply in 2011:

- Rocky Mount-Edgecombe-Nash
- BRAC-RTF



Commonalities- Federal/Local Efforts



COMMUNITY

COLLABORAT

What's it gonna take
to improve our
performance?
Possibilities?



"We are a collection

CHANGE

of Land
Use and
Urban Develop

Leave a Legacy

See Whole SYSTEM

If you had
a year
to live... hmmm...



what...



QUALITY OF LIFE

REGIONALISM

Responsibility to Region

Watershed

OUR CONTRIBUTION

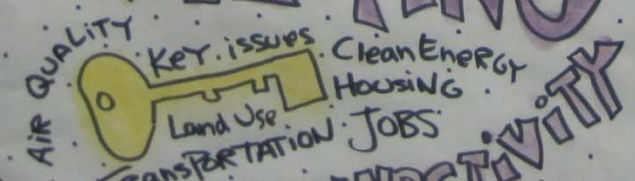
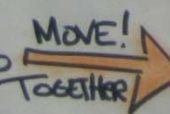
IMPORTING
TO SUPPORT
ENERGY Demands



ALTERNAT

Communication Commu

ASSESSING → ACTING



The National Historic Civil Rights Trail



**PROGRESS WITH THE
PARTNERSHIP FOR
SUSTAINABLE COMMUNITIES**

Contact Information



Camilla Warren
Brownfields Revitalization Coordinator
U.S. EPA Region 4
Warren.Camilla@epamail.epa.gov
(404) 562-8519

Channing Bennett
UST Reuse Coordinator
U.S. EPA Region 4
Bennett.Channing@epamail.epa.gov
(404) 562-8474

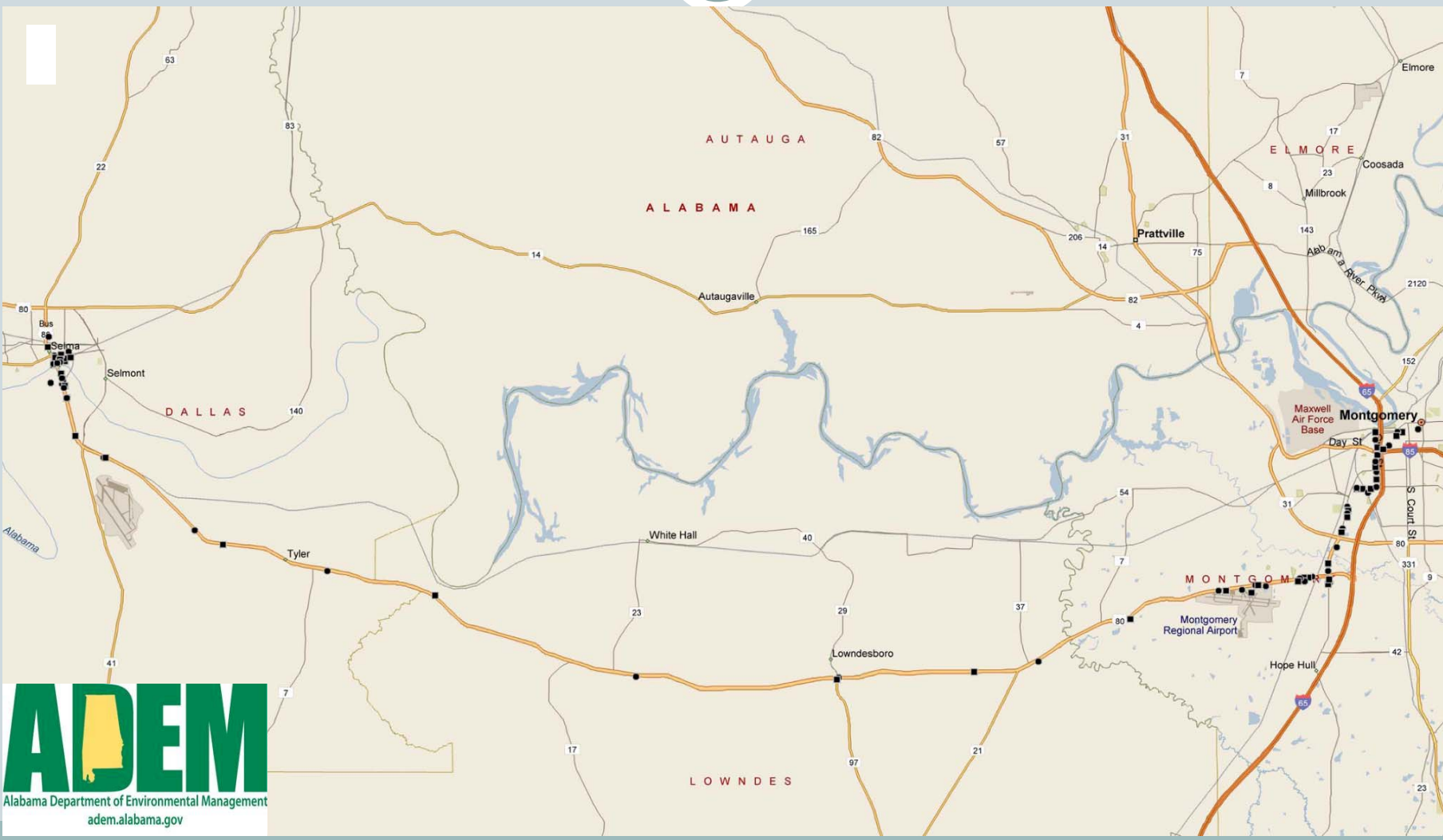
Larry Bryant, Chief
Environmental Services Branch
AL Department of Environmental
Management
JLB@adem.state.gov
(334) 271-7771

Bill Morrison
AL Department of Revenue
Governmental Development
Bill.Morrison@revenue.alabama.gov
(334) 868-0221

What is the National Historic Civil Rights Trail?



The National Historic Civil Rights Trail



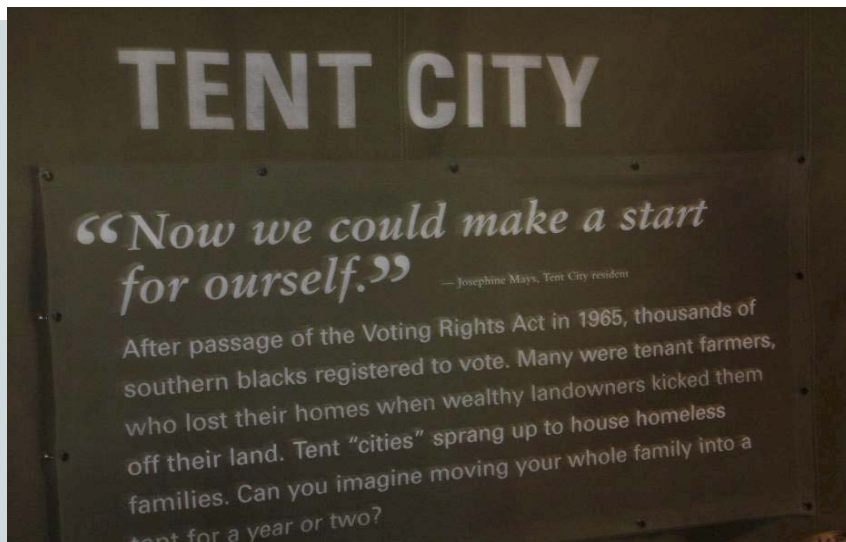
Old, Abandoned Gas Stations



Visioning Selma



Community Engagement Activities



- **Planning with Federal, State, and Local Agencies with Communities**
- **Exchanging information**
- **Site Tours**

Partnership for Sustainable Communities

HUD, Federal Highway Administration, EPA, National Park Service, AL DOT, and City of Montgomery at Whitehall Interpretive Center



National Park Service Partnership



- NPS Views on Selma/Montgomery Federal Partners Work.....
 - Increased visibility with federal and state partners which emphasizes importance of the Historic Trail in making society more inclusive of all citizens.
 - Synergistic approach enhances ability to pool resources and address issues; resources used more effectively and efficiently.
 - Partners support small communities along Trail that still lack basic support services. Helping these communities find answers, sometimes at little or no cost, enables them to spend more time engaged in broader activities along the Trail.

Hayneville Visioning



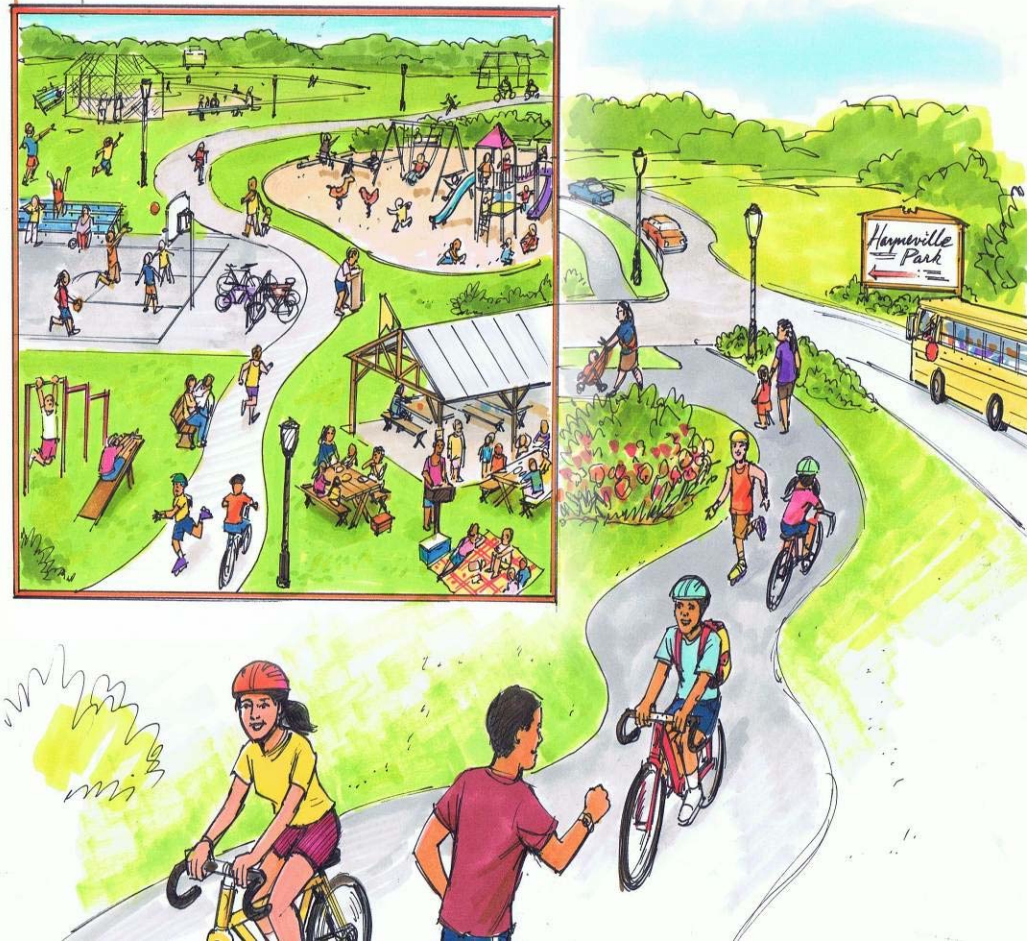
Visioning creates an open community forum designed to listen and obtain diverse individual visions with the goal of integrating these visions into a regional or community vision

Visioning is an innovative interview and visualizing technique for capturing and integrating individual and community visions



Hayneville Visioning

- Residents wanted park improvements
- AL DOT can provide sidewalks and alternative transportation support
- Local architects provided drawings
- Excellent examples for neighboring communities
- Create Partnerships that last
- Sidewalks are in place



Hayneville Visioning



Visions for Redevelopment are presented to community representatives

Collaboration and Community Engagement Gets Results

- Montgomery - EPA OUST and Brownfields, ADEM, Alabama Department of Revenue, AL DOT, HUD, US Army Corps of Engineers, Federal Highway, Alabama Clean Water Partnership on Stream Restoration, Community Redevelopment and Petroleum Brownfields Assessment



- Hayneville – AL DOT and US Army Corps of Engineers reviewing local highway and bridge needs and water supply and water treatment issues
- Selma – National Park Service and Selma jointly developing new Interpretive Center
- Sustainability Workshop in Selma will provide new ideas and technical assistance to communities

The Plan – Promoting Revitalization and Sustainability

- **Conduct and prioritize inventory of abandoned USTs and other brownfields that need environmental assessment, cleanup WITH local governments and community**
- **Engage community and local, State, Federal and Private Partners – include all partners in “Visioning” sessions**
- **Identify economic development opportunities that overlap UST locations and partners WITH the community**
- **Address environmental issues and development issues simultaneously - identify needs and governmental (i.e., grants, etc.) resources to support WITH Federal Partners and community**
- **Green remediation approaches are encouraged**
- **Support results - Collect Feedback and Followup with partners to ensure success**

Community Engagement Team in Selma



Initial Results – National Historic Civil Rights Trail

- **Montgomery Improving Civil Rights Trail Gateway**
- **Hayneville Daycare Center Design**
- **Selma Marina Redevelopment**
- **New Partnerships addressing numerous improvements**
- **Transit along National Historic Civil Rights Trail**



Coordination and Results



- **Accelerating and expanding the cleanup and revitalization of petroleum brownfields requires:**
 - **Collaboration**
 - **New and strengthened partnerships**
 - **Creation of new approaches and models for the assessment, cleanup, and sustainable reuse of petroleum properties**
- **Involves coordination among governments at the federal, state, tribal and local levels and across tank remediation, brownfields, revitalization, and economic development programs**



Questions for any presenter??