

# **Sustainable Regional Planning,** *with a Carolina Twist*



**Jonathan Weiss  
New Partners for  
Smart Growth Conference  
February 4, 2011**



# DoD Overview

---

- *“This Department simply cannot risk going down the same path.”*
  - Robert Gates, Secretary of Defense
- DoD manages 30 million acres of land across the country
  - Military Services (in order of land) -- Army, Air Force, Navy, Marine Corps
- DoD has installations & training and testing ranges (land, air and sea)
- Broad diversity of missions, locations, ecosystems, and terrains to simulate real-world combat conditions





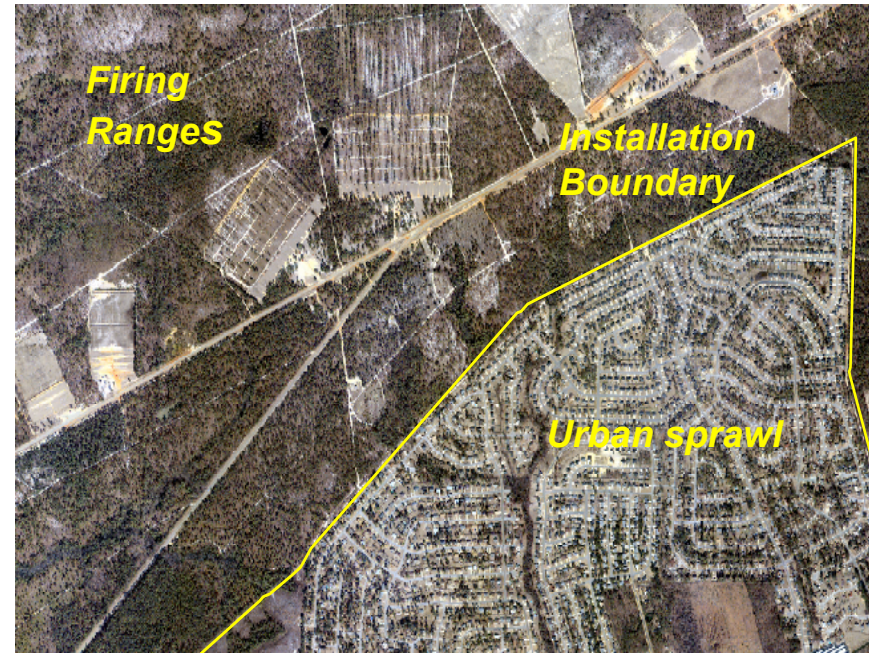
# DoD SUSTAINABLE RANGES INITIATIVE (SRI)

---

## Comprehensive Approach to Sustain Ranges & Installations for Future Training/Testing

- Maintain Range Access and Realistic Live Fire Capability – Key to Force Readiness
- Counter Varied Encroachment Concerns
- Promote Environmental Stewardship and Long-Term Planning

**Working “Outside the Fence” and Partnering is Key**





# Readiness and Environmental Protection Initiative (REPI)







# DoD's EVOLVING MULTI-PRONGED APPROACH



## *Many Needs – Many Tools*

### **Policies, Legislation/ Regulation**

#### **Compatible Use & Buffering**

- Readiness & Environmental Protection Initiative (REPI)
- Joint Land Use Studies (JLUS)
- Recovery Credit Systems/ Other Innovations
- Community Plans & Liaison Officers

### **Outreach and Engagement**

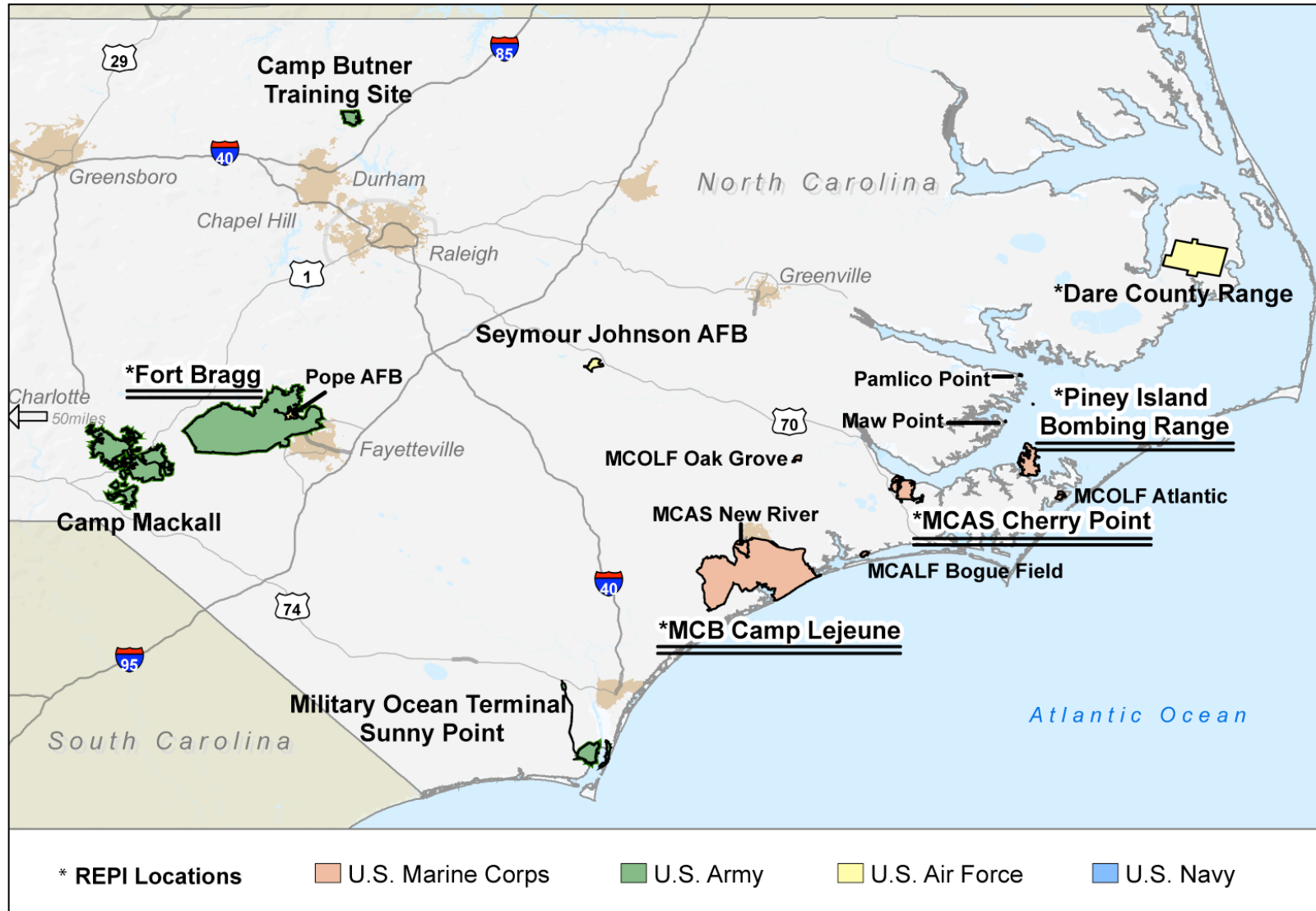
- Fed Agencies
- State & Local Governments
- Working Lands, NGOs & Broad Cross-Section of Stakeholders
- Emerging Sub-State Regional Partnerships

### **Multi-State Regional Planning**

- Southeast Regional Partnership for Planning and Sustainability
- Western Regional Partnership



# Military Installations in North Carolina





# Session Panel

---

- Paul Friday,  
Marine Corps Installations-East



- Michael Lynch,  
Fort Bragg



- Bob Barnes,  
The Nature Conservancy

