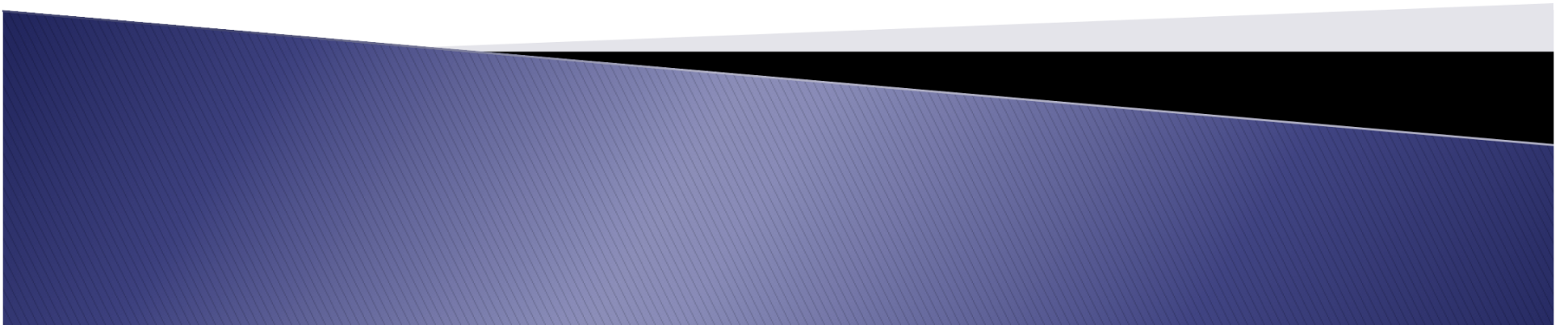


Strategies to Address Community Exclusion

Anita S. Earls
February 5, 2011



Promoting Social Equity

- Equity requires us to restructure systems and institutions that result in racial disparities (and class/gender disparity)
- Equity requires us to take the particular racialization of space into account when fashioning remedies
- Equity requires us to link the creation of opportunities to disenfranchised residents



Legal Strategies/Tactics

- Researching and marshalling the facts to affect public opinion.
- Researching/ explaining the legal/political process
- Identifying / creating forums for messaging/ communications (public process)
- Stopping or delaying adverse governmental action through litigation or administrative advocacy
- Securing changes in policy
- Securing positive changes for individual clients and the community.



Southern Moore County, Pinehurst

North
Carolina

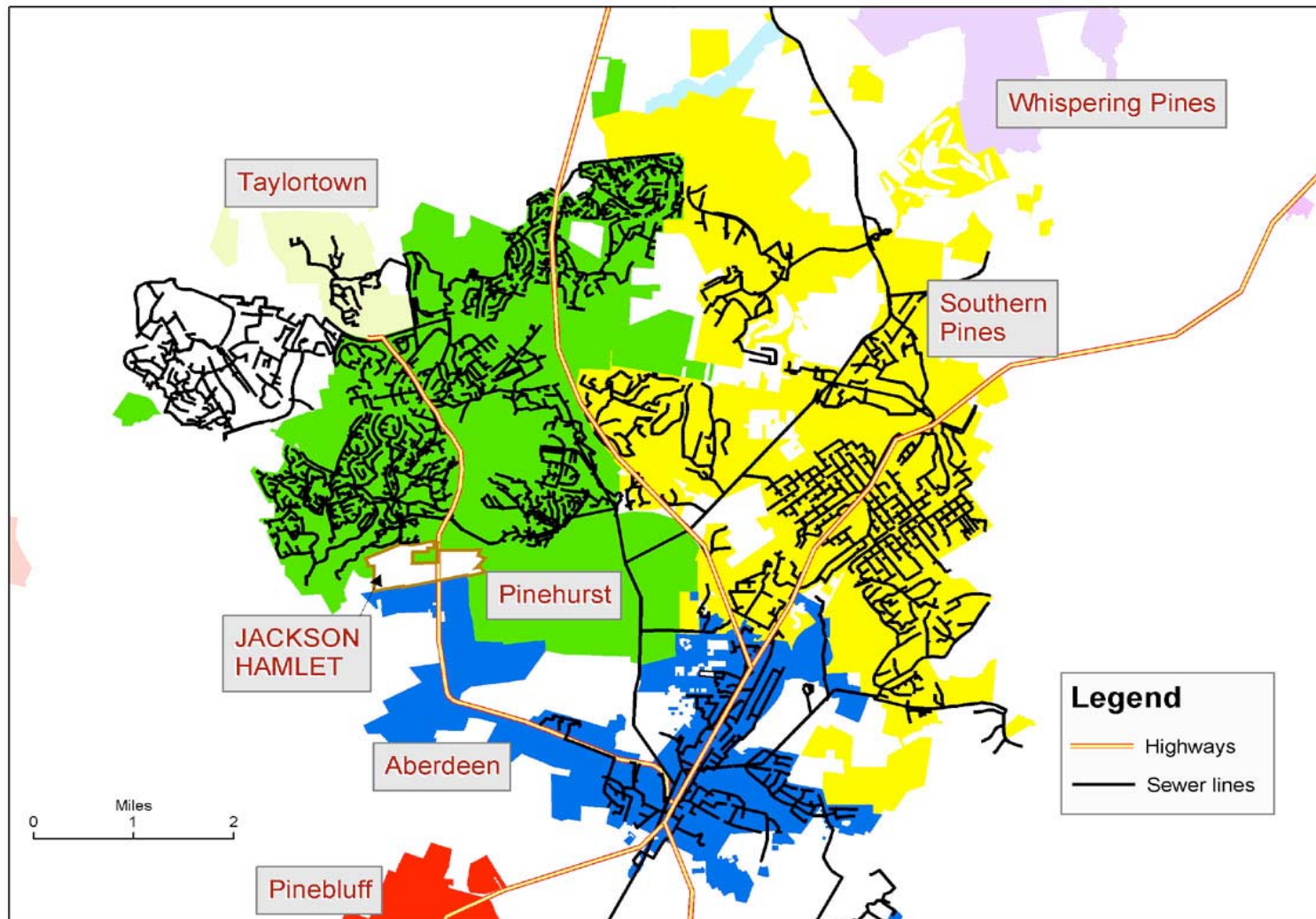




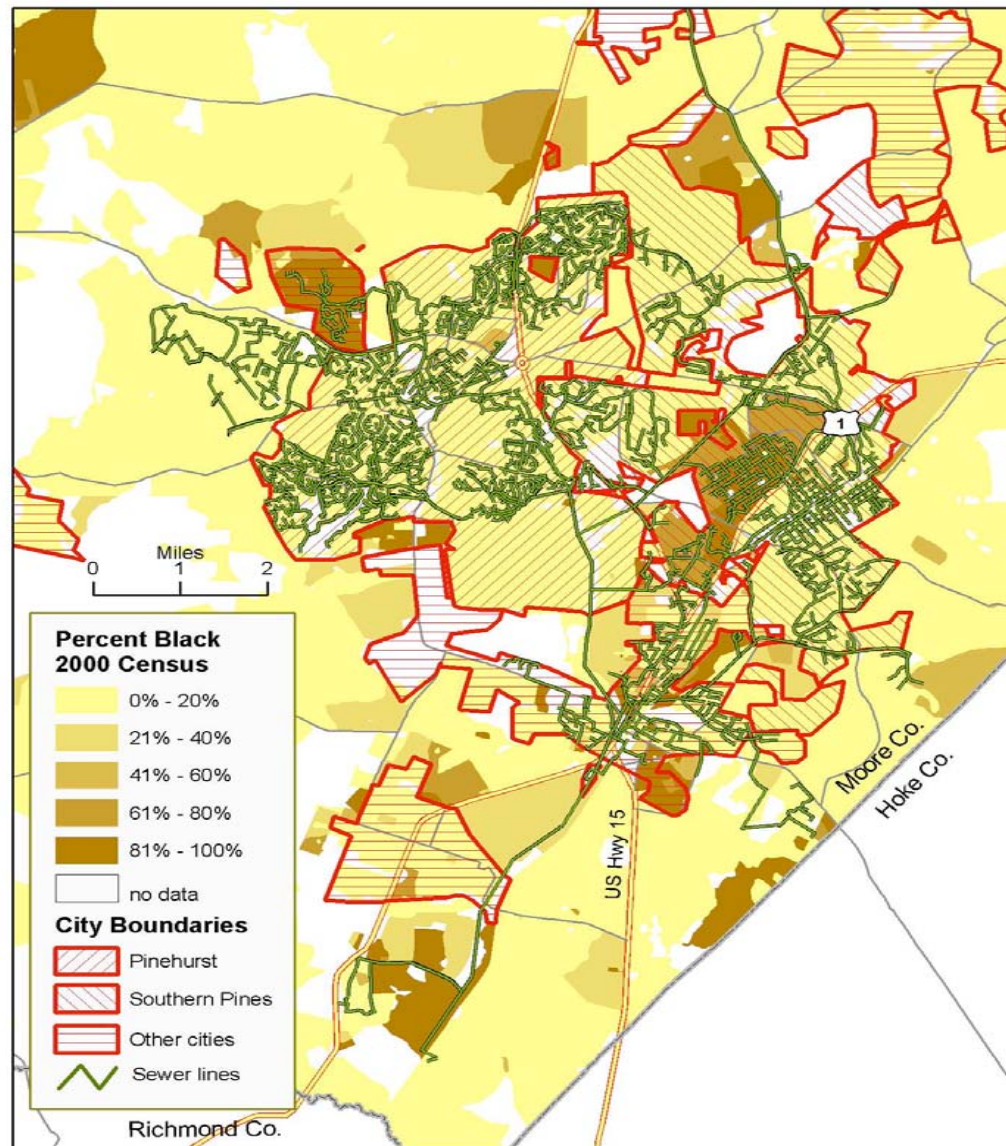
A Moore County family in the early 1900's

Jackson Hamlet, 2006





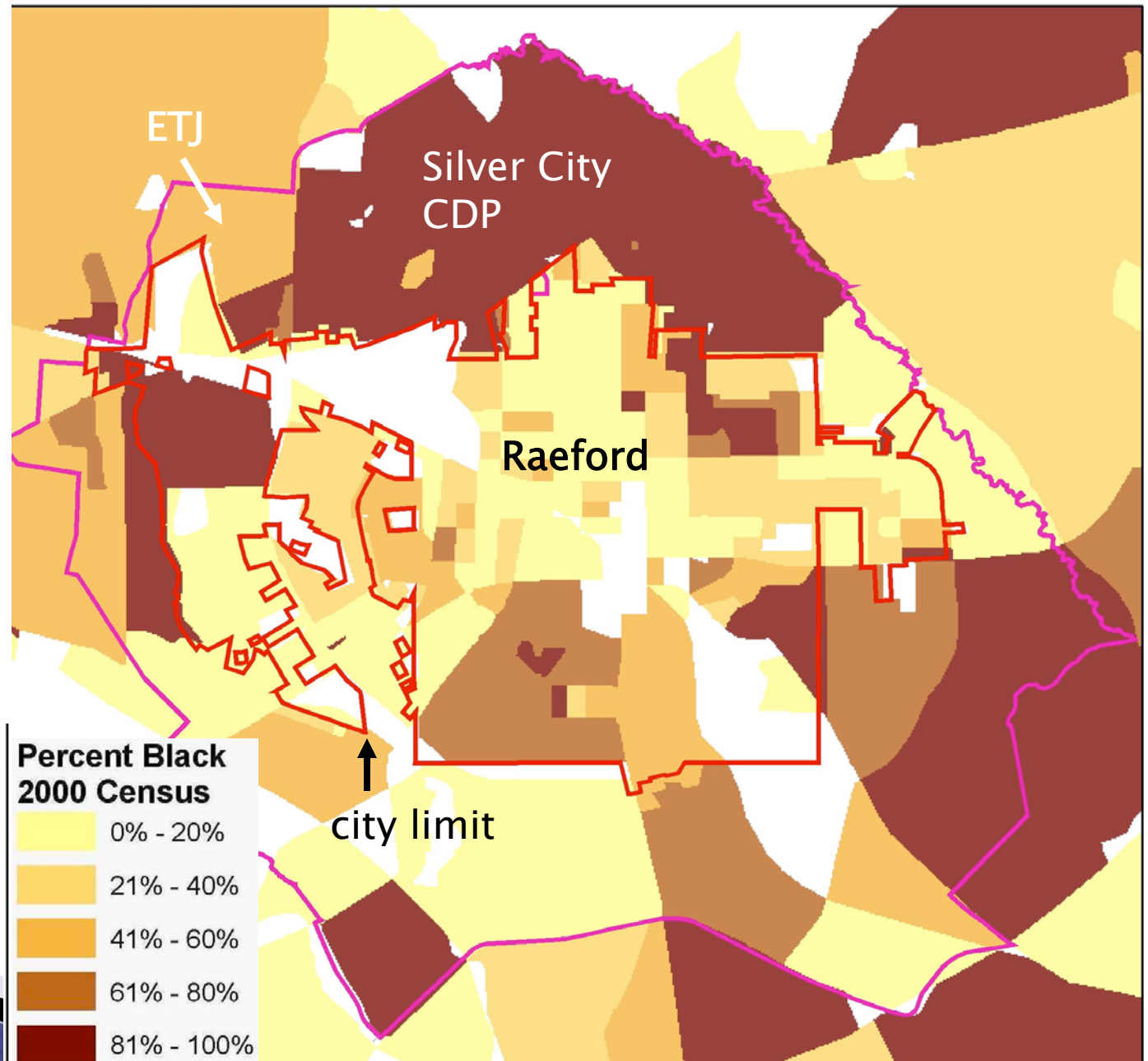
(c) Cedar Grove Institute for Sustainable Communities, Inc.

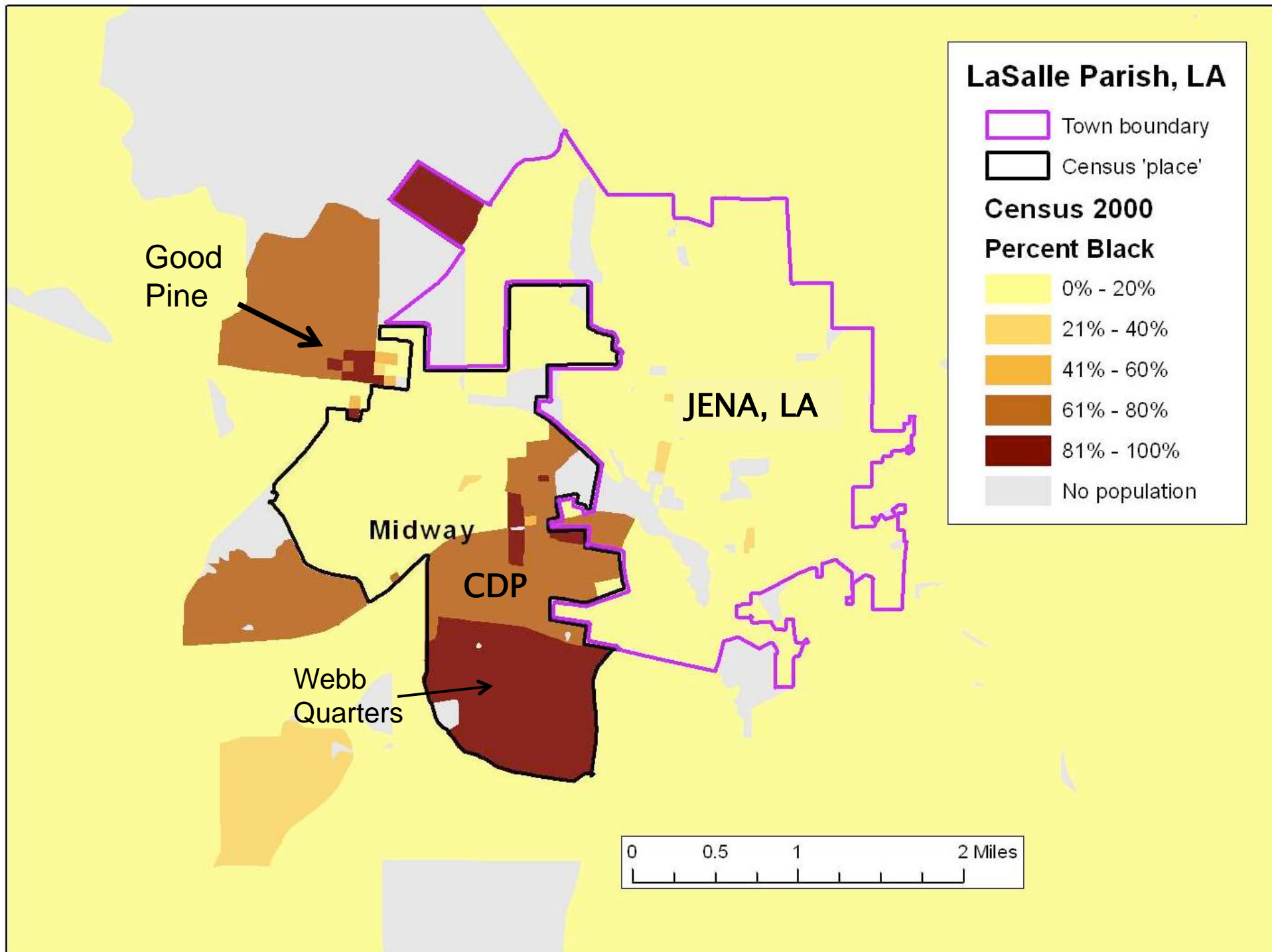


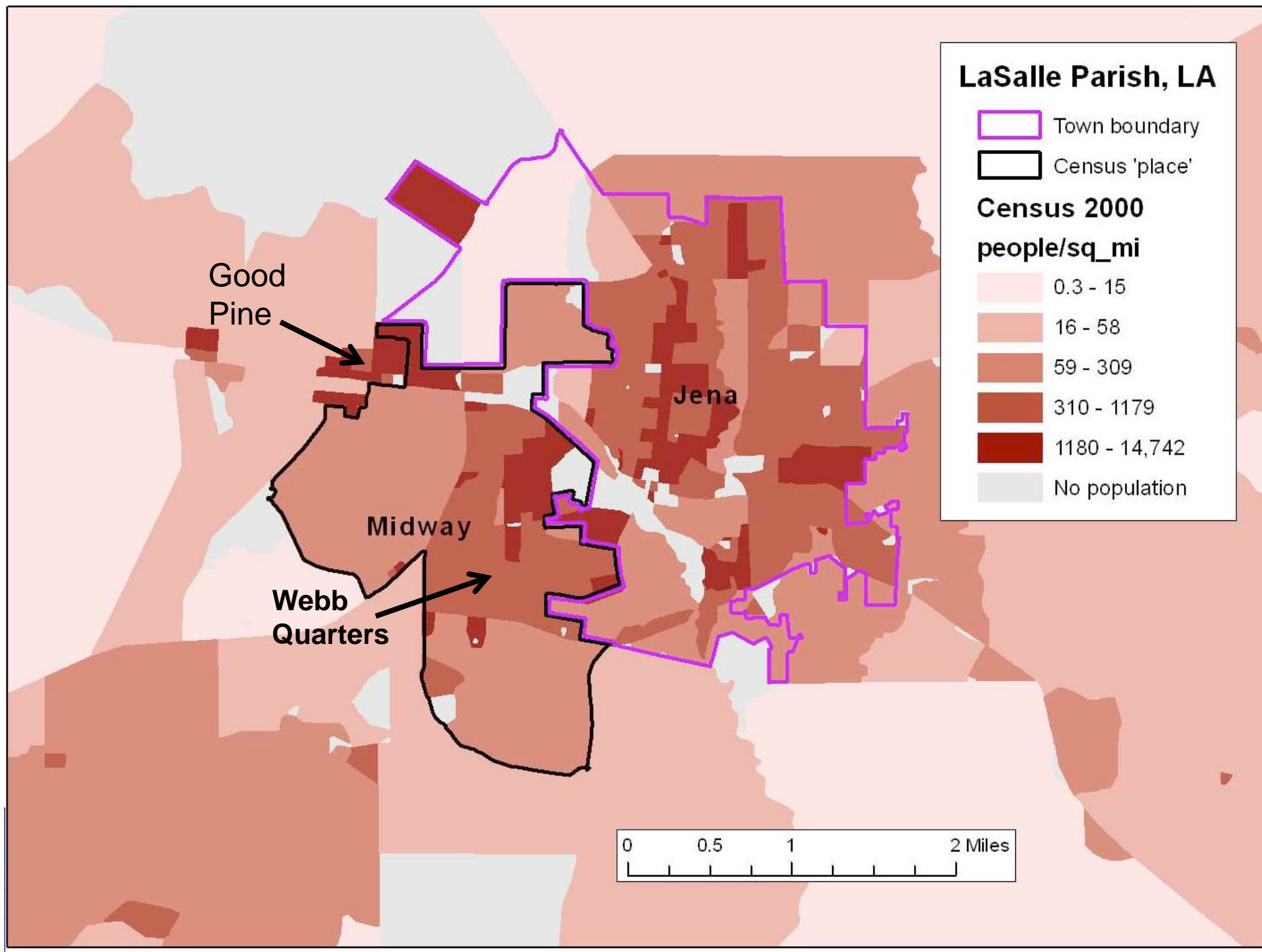
(c) Cedar Grove Institute for Sustainable Communities, Inc.

Raeford, NC

City
pop. 3,386
49.4% minority
ETJ is 74% African-
American







Implications For Excluded Neighborhoods

- ▶ Public health is endangered.
- ▶ Homes at risk of condemnation.
- ▶ Property values lowered.
- ▶ Home ownership endangered.
- ▶ Affordable housing decreased.
- ▶ Communities divided.
- ▶ Residents disenfranchised.

Integrated Strategies

- ▶ Community organizing & networking – locally & nationally
- ▶ Research
- ▶ Media campaign
- ▶ Local advocacy
- ▶ Litigation





Meeting in Modesto, California

► *March, 2005*



Meeting in Midway, North Carolina

► *June, 2005*

Research

Comparison of Estimated Monthly Expenses in Jackson Hamlet: Current Expenses vs Expenses if Annexed by Pinehurst

Expenses	CURRENT EXPENSES		Est. Expenses if Annexed by Pinehurst	
Property Taxes	Rates	Monthly Expense	Rates	Monthly Expense
	(per \$100)	(assuming \$50,000 property value)	(per \$100)	(assuming \$50,000 property value)
County Tax Rate	\$0.455	\$18.96	\$0.455	\$18.96
Advanced Life Svcs	\$0.04	\$0.83	\$0.04	\$0.83
Fire District	\$0.11	\$4.58		
City Tax Rate			\$0.31	\$12.92
Total Property		\$24.37		\$32.71
Utility Fees		Monthly Expense	Utility Fees	Monthly Expense
		(6,000 gallons)		(6,000 gallons)
<u>Water</u>				
Base Charge (for 3/4" meter)	\$4.30	\$4.30	\$4.30	\$4.30
Use Charge	\$3.35/1000 gallons	\$20.10	\$3.35/1000 gallons	\$20.10
<u>Septic/Sewer</u>				
Base Charge			\$4.30	\$4.30
Use Charge			\$3.35/1000 gallons	\$20.10
Maintenance		\$18.00*		
<u>Streetlights</u>		\$8.43		
Total Utilities		\$50.93		\$48.80 **
Current Total Monthly Expenses		\$75.30		\$81.51

* Septic tank expenses are estimates based on monthly upkeep costs, charges for emptying once every 2 years, and replacing water pump once every four years
Actual costs will vary depending on the number of problems encountered

** Pinehurst water/sewer is provided by Moore County. Sewer use charges are 100 percent of water charges -- meaning if you use 100 gallons of water, you will be charged for 100 gallons of water and 100 gallons of sewer.

Neighborhood Tours

Welcome

US OPEN ATTENDEES !

**Come tour the neighborhoods of
Jackson Hamlet, Midway and
Waynor Road with local residents!**

Golf has brought incredible prosperity and success to our home town. Yet some neighborhoods are being excluded from municipal boundaries and denied basic services such as sewer service, police and fire protection and street lights.

Please take this unique opportunity to see firsthand the situation of our communities and to learn more about Pinehurst as you enjoy your stay here.

**Call Hilton Dunlap at
910 673 5445 for more information.**

O'Neal Russ & Senator Harris Blake



Results to Date

- ▶ Water and sewer for almost all the residents.
- ▶ Midway and Waynor Road annexed.
- ▶ Affordable housing project being built in Midway.
- ▶ Neighborhood preservation zoning being considered for Midway.



For More Information

- ▶ Contact:

Anita S. Earls

Southern Coalition for Social Justice

919-323-3380, ext. 115

anita@southerncoalition.org

www.scsj.org

