



LISC
Bay Area

LISC
Bay Area



New Partners for Smart Growth
***Rethinking Density: Is Smart
Growth Good Enough?***

Stephanie Forbes
Executive Director
Bay Area LISC

Bay Area Local Initiatives Support Corporation (LISC)

MISSION

LISC helps community-based organizations transform communities and neighborhoods into healthy ones – good places to live, do business, work, play and raise families.



Building Healthy and Sustainable Communities



NExT Neighborhoods



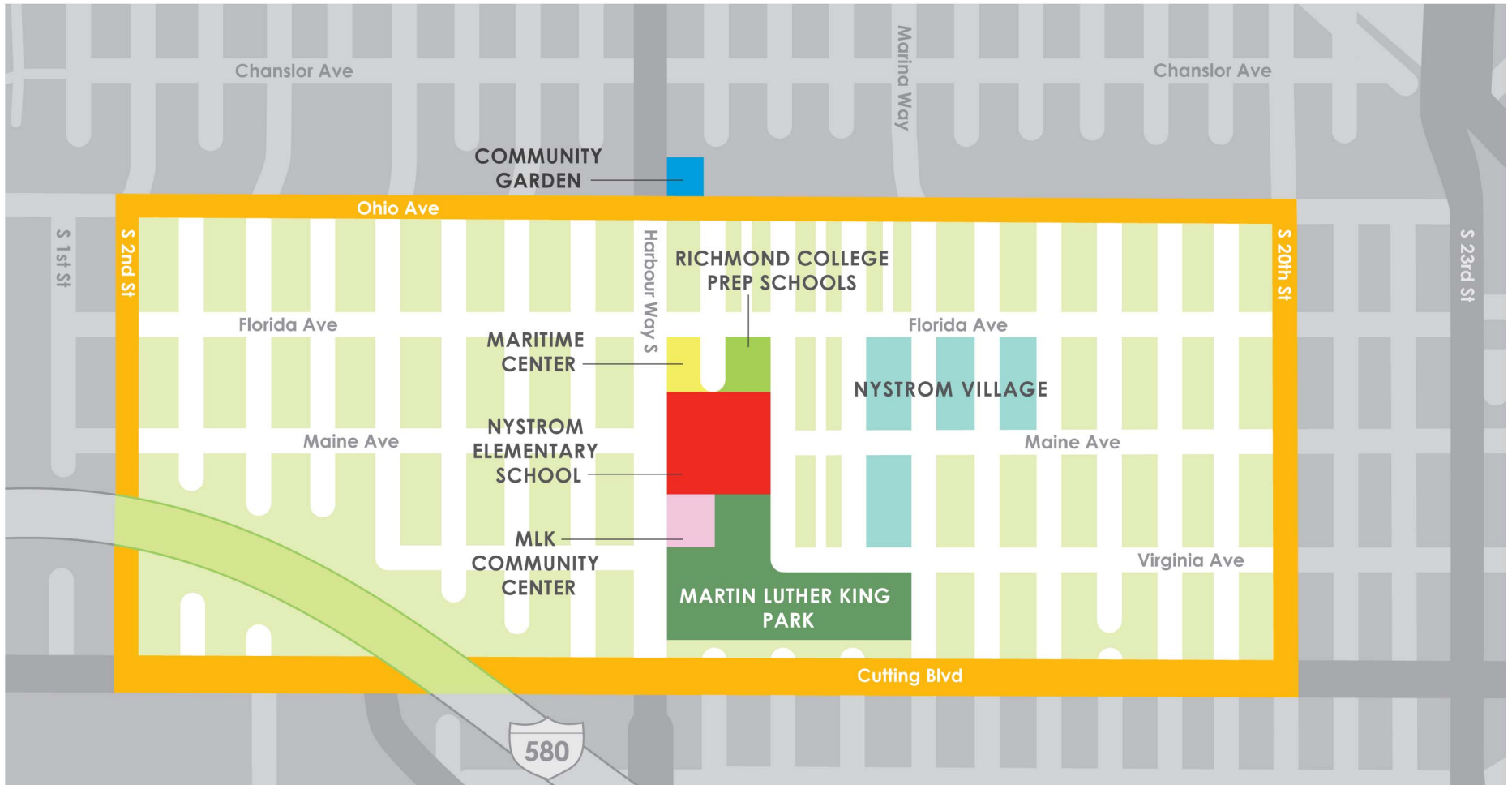


Welcome to Nystrom



**NYSTROM
VILLAGE**

Nystrom



This is now....



Richmond Challenges Today

28 % of Richmond residents graduate from high school.

One out of every four children in the Richmond area is overweight.

Currently, Richmond residents are 4 times more likely to be murdered and 3 times more likely to be robbed than the average American.

Nystrom Elementary school is ranked in the bottom 10% of schools in California.

The neighborhood presents many challenges

Today, the Nystrom neighborhood is made up of almost 14,000 people out of almost 100,000 in Richmond.

Its median income is just \$28,943 compared to \$72,640 for the Bay Area.

30% of Richmond residents live below the poverty level, of which 43% are children.

The Richmond unemployment rate is almost 18% as compared to 11% in California.

48% of the population is Black/African American, 38% Hispanic/Latino, 7% White and 4% Asian.

Physical Deterioration of Major Capital Developments



Maritime Center - 1943

Perspective drawing of the Maritime Child Care Center c.1943
Courtesy of the Richmond Museum of History



Maritime Center



Nystrom Elementary School



MLK Community Center



MLK, Jr. Park



Nystrom Village



Nystrom Village



Easter Hill - Lessons Learned



Making Change Happen



Making Change Happen - NURVE

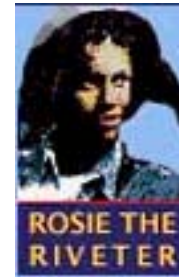
Vision of Nystrom:

- A safe, diverse and thriving place, where kids walk to quality schools, people of all ages use the parks and community facilities and a variety of housing options meet the needs of local residents.”

Strategy:

- Transform the Nystrom community through focused, collaborative work by residents, nonprofit organizations, government jurisdictions.
- Comprehensively revitalize neighborhood schools, housing, and public facilities.
- Create programs, projects, and events to support local residents' needs.

NURVE Partners



CHDC, CBEC



NURVE STRUCTURE

- Policy Committee
- Technical Advisory Committee Meetings
- Community Engagement
 - Neighborhood Council meetings
 - Community Engagement Events

NURVE Community Action Teams

Community Action Teams ~ focused on five pillars of community priority

- Public Safety
- Jobs & Econ Development
- Education
- Health
- Physical Environment



Action Teams – Public Safety

- Goal: ***Increase the participation of community residents in safety issues by providing concrete action items.***
 - Many things besides law enforcement go into making a community feel safe. Environmentally sound design, safe walkways to schools and community centers, well supervised playing fields and other elements all combine to create an overall sense of safety and wellbeing.
- ***Action Team Members:*** Janie Holland, Jeannie Cummings, Dedan Ji Jaga, Eric Avery, Louis Wright, James Bowen, Lola Stokes

Action Teams – Public Safety

- Six Month Objectives

- Increase visibility and “eyes” in the community
 - Survey and report all non working street lights in the neighborhood
 - Create “Porch Light” Campaign
 - Post “Drug Free Zone” signs around schools and parks.
 - Increase participation in Neighborhood Watch and other activities

- One Year Objectives

- Expand on environmental design issues that promote safety
 - Promote speed bumps around schools to promote traffic safety
 - Improve safety at bus stops
 - Partner with Community Consortium to develop strategies for reducing community violence



Sample NURVE programs & projects: Safe Routes to Schools



SAMPLE NURVE INITIATIVES

- Richmond Farm2Table CSA



- Technology Inclusion Program w/ BBK/CETF



Sample NURVE programs & projects: Y-PLAN, Creation of a Youth Council



“The Y-PLAN project has been significant because it’s helped us figure out ways to improve our community and has given us, as youth, the opportunity to speak out for the different things we would like to see in our community.”

- Y-PLAN student

Sample NURVE programs & projects: PTA formed at elementary school, parent engagement & absenteeism program created



Sample NURVE programs & projects: Richmond College Prep. Preschool & Charter Elementary School



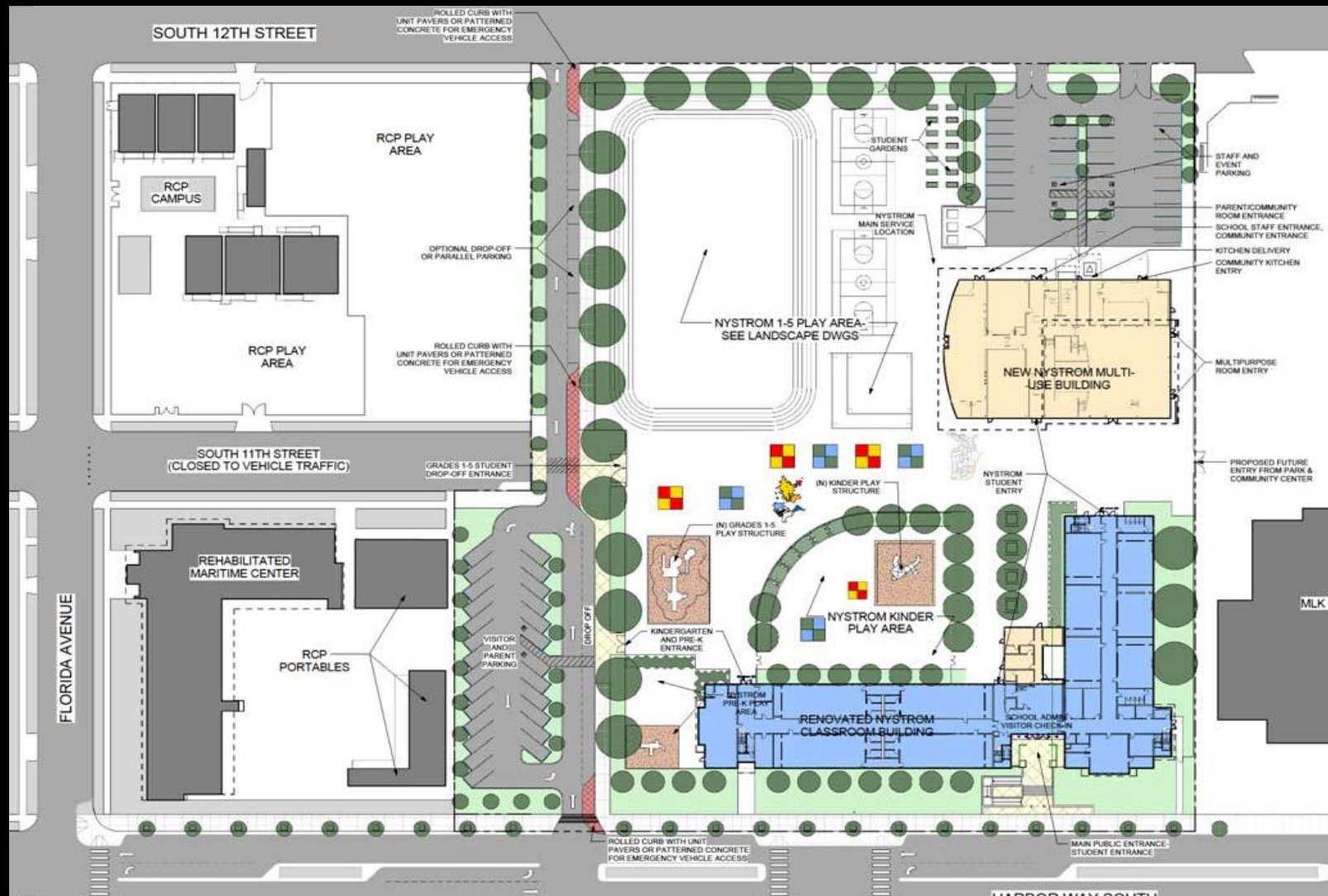
NURVE Community Planning



Working Towards Building a Whole Neighborhood, Connected, Engaged, Safe



Nystrom Elementary School – What it will be...



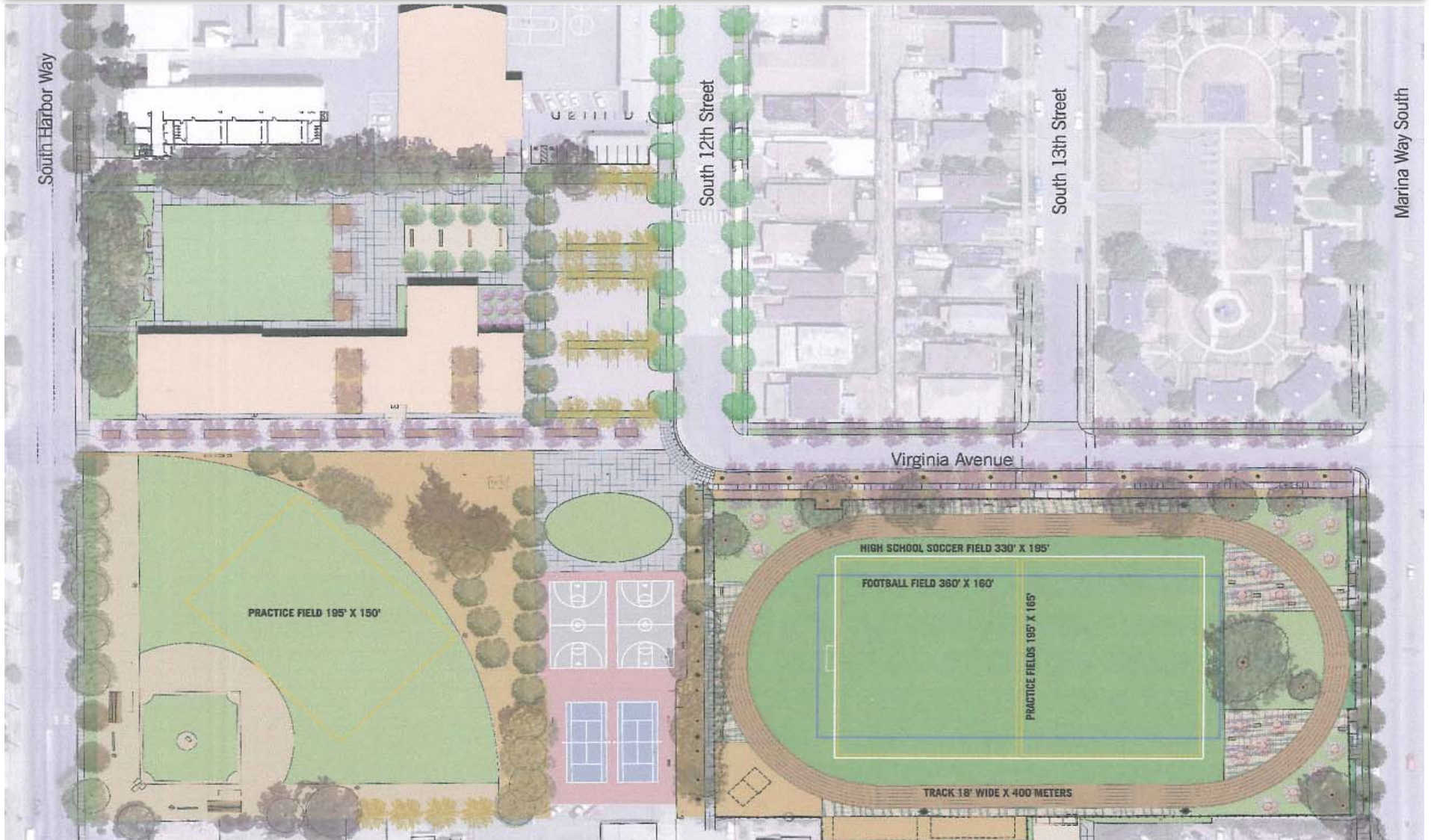
Nystrom Elementary School – What it will be...



Nystrom Elementary School – Multipurpose Building (in construction)



MLK Park - What it will be...





Construction Start – 2010
Estimated Project Completion Date – March 2011

MLK Park – What it is now (construction)...



Maritime Center, 2010 – Groundbreaking



Maritime Center – What it is now (construction)...



- Estimated completion early May 2011
- Part of Rosie the Riveter WWII Home Front National Historical Park

MLK Community Center

MLK Center was demolished 2010



MLK Community Center – What it will be...



Nystrom Village – Planning Process

- **Community-oriented designs**
- **Integrated green building design & practices**
- **Environmentally sensitive planning**
- **Market and affordable housing units**
- **Seamless neighborhood integration**
- **Community supportive services facilities**
- **Historic building preservation component**
- **Pedestrian friendly walkways**



Nystrom Village – What it will be...



- 4 City Blocks
- 200 – 250 Homes: Family and Senior Rental and Homeownership
- Community Facilities
- Street and Infrastructure Improvements
- Integration of Historic Structures in Plan
- Total Development Costs: \$75 - 85 million

Nystrom Village – What it will be...



Rental Homes = 212

1 Bedroom Flats = 32

2 Bedroom Flats = 44

2 Bedroom Townhome = 42

3 Bedroom Townhome = 94

For Sale Homes = 39

3 Bedroom House = 30

4 Bedroom House = 9

Senior Living = 150

1 Bedroom Flats = 150

Total = 401 Homes



SENIOR HOUSING

EXISTING BUILDINGS & COURTYARD
COMMON FACILITIES FOR SENIORS & COMMUNITY, MUSEUM

NEW HOMEOWNERS

NURVE



LISC
Bay Area



Stephanie Forbes
Executive Director

www.bayarealisc.org
www.bayareanext.org