

# TOD, Corridor Revitalization, and Air Pollution: What You Don't Know Can Hurt You (and Others)

New Partners for Smart Growth - Charlotte, North Carolina  
Saturday, February 5, 2011

Ellen Greenberg, Arup

Doug Eisinger, Sonoma Technologies

Cecil Corbin-Marks, WE-ACT

Phil Erickson, Community Design & Architecture

ARUP

# Why This Session

- **An Emerging Issue for New Partners**
- **A Threat to Health, and to Smart Growth**
- **A Technical Challenge**
- **An Environmental Justice Challenge**
- **A Leadership Opportunity**
- **A Need for Collaboration and Different Perspectives**

# Session Outcomes

- **Information and awareness**
- **Range of possible solutions**
- **Resources**
- **Actions to take**

## 2005 - Lake Arrowhead Meeting: Healthy Regions, Healthy People

- **Air quality measurements needed at the micro-level**
- **Fine Particulates (PM 2.5) a major health risk**
- **Need to question assumptions about walkable community design**
- **Highlighting EJ issues, w/focus on ports of LA and Long Beach**

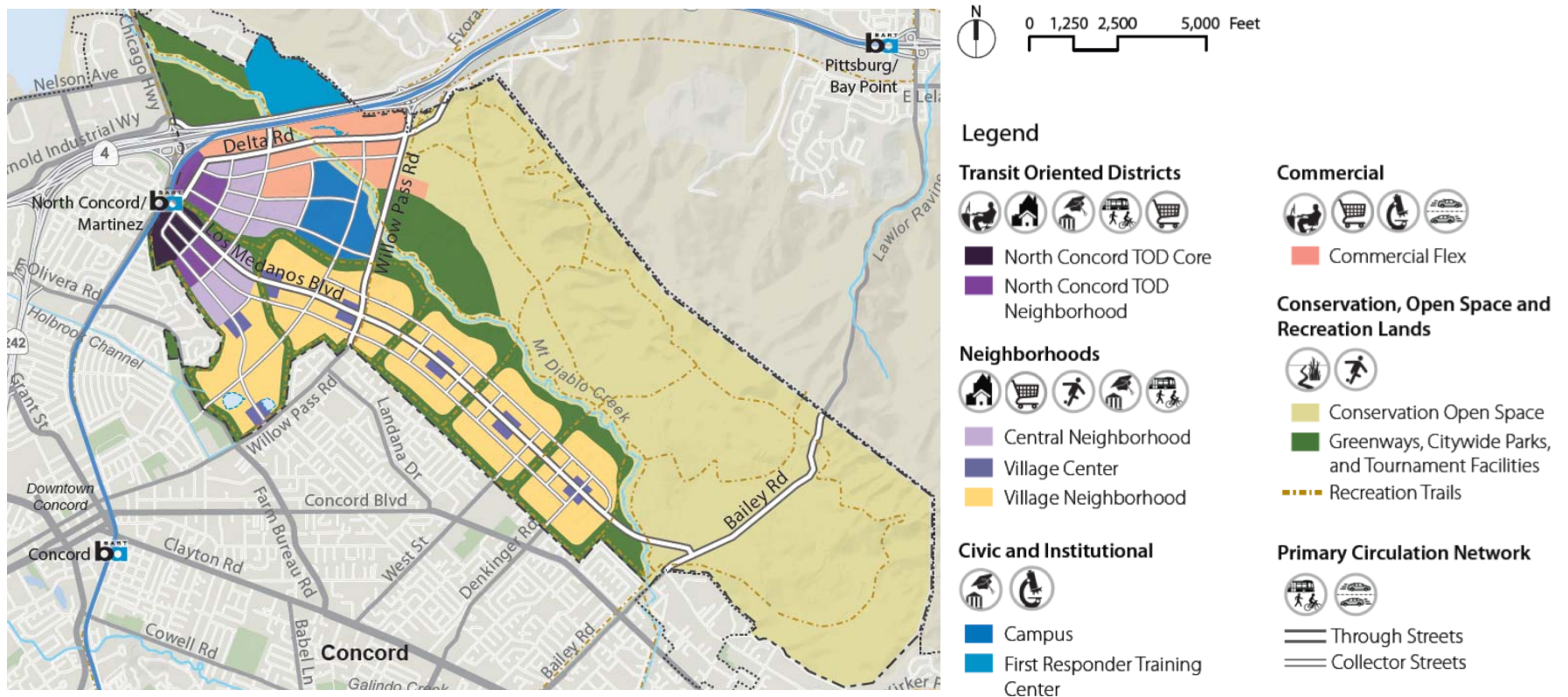
# 2010 – Regional Air Quality EIR Guidelines

## **Screening for Fine Particulate Levels**

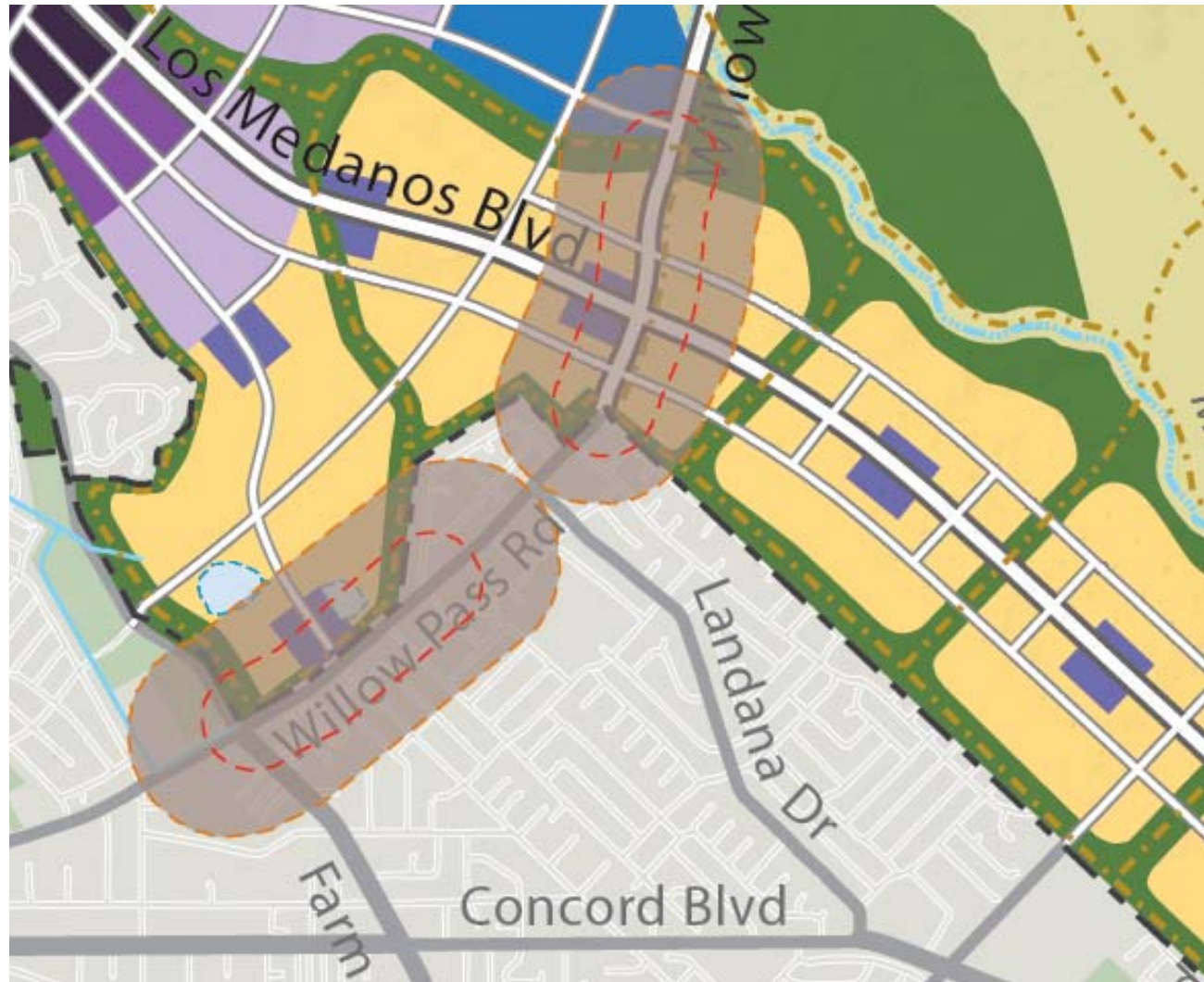
- **500-ft planning overlay zone around major roadways (20,000 + adt)**
- **1000-ft Zone of Influence for projects that bring new emissions sources or new “receptors” (i.e., people).**

# Concord Naval Weapons Station Reuse Planning

## ■ Planning for centered, compact residential areas



# 500' Special Overlay Zone





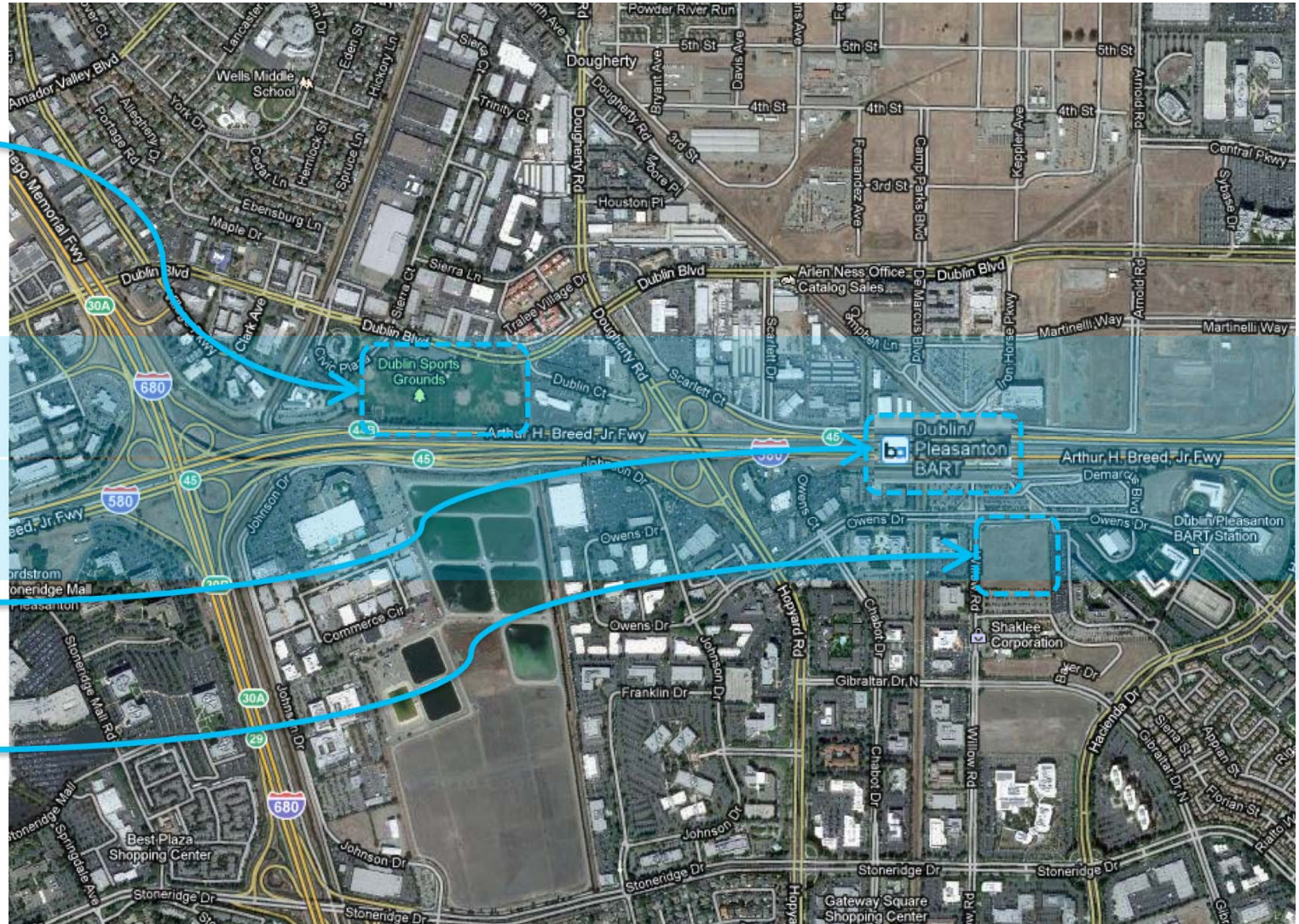
# Hacienda Business Park Transit-Oriented Specific Plan

Dublin Sports Grounds

~1,000 ft.

BART station

Vacant lot in office park.





# Walkable Boulevard? Or Cancer Risk?



Image by Freedman, Tung, and Sasaki

# Examining the issues

- **Doug Eisinger**

- Director Transportation Policy and Planning  
Sonoma Technology, Inc
- Program Manager, UC Davis-Caltrans Air Quality Project
- Adjunct Associate Professor, University of Hawaii

- **Cecil Corbin-Mark**

- Deputy Director  
WE ACT for Environmental Justice

- **Philip Erickson, AIA**

- President  
Community Design + Architecture