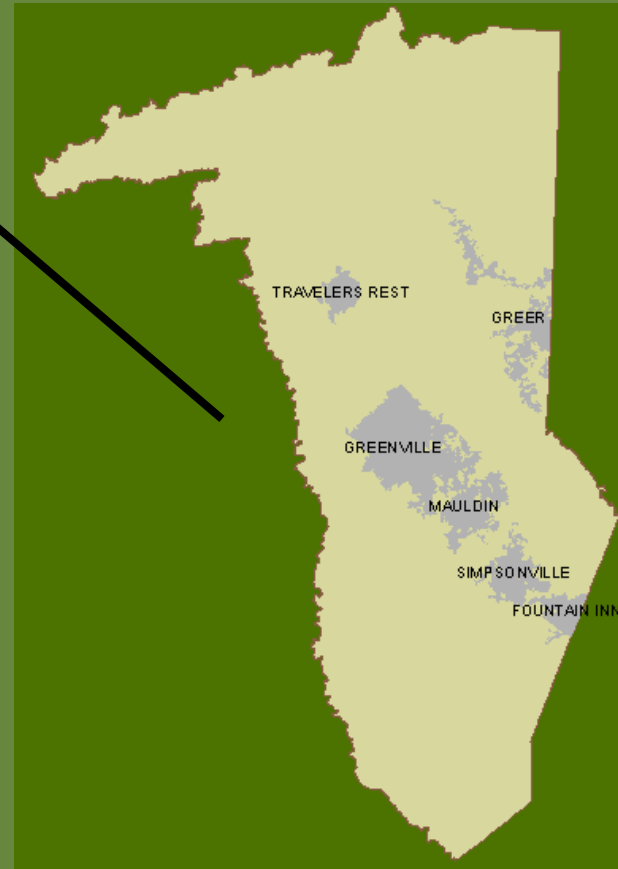


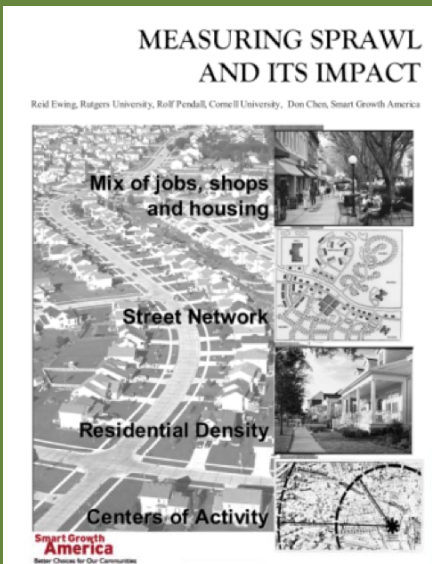
Stormwater Banking Program





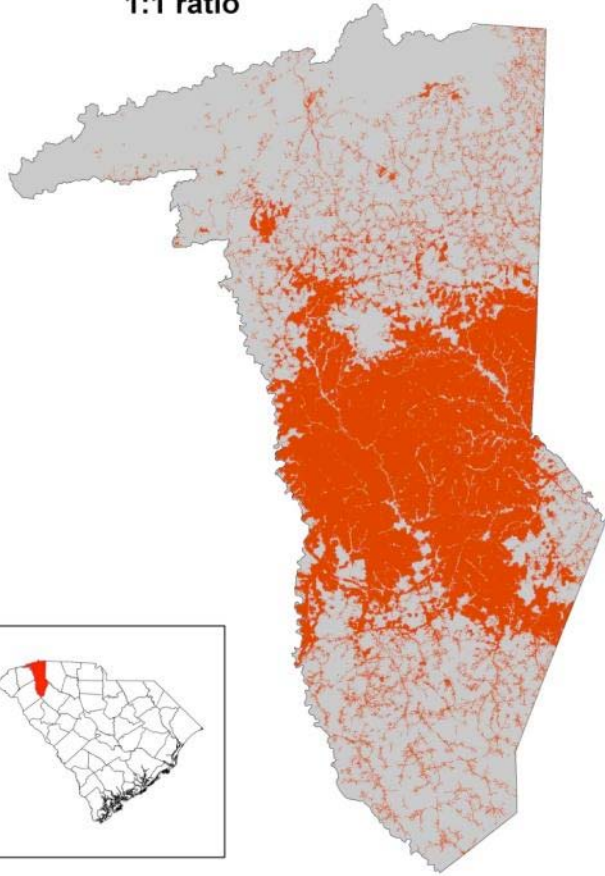
2000
Population:
380,000

2030 Population
Estimate:
540,000

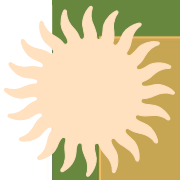
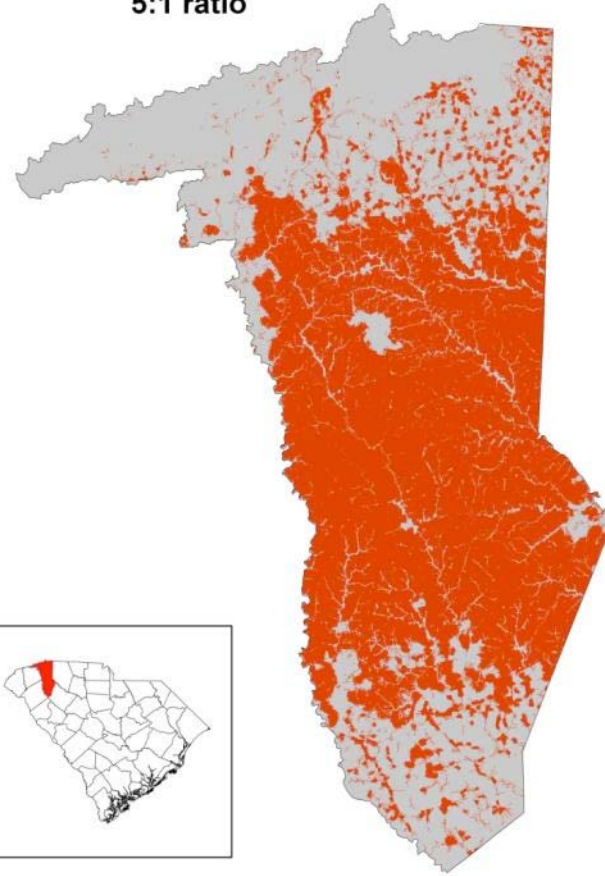


Background:
Greenville County

Greenville, SC
2030 Predicted Urban Growth
1:1 ratio



Greenville, SC
2030 Predicted Urban Growth
5:1 ratio

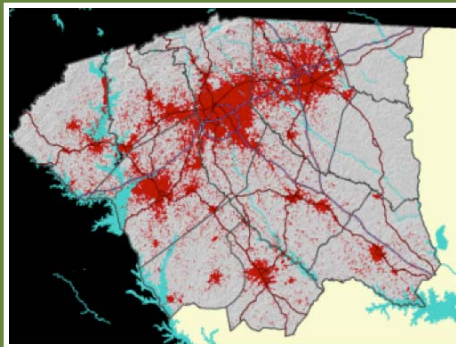


Background: Development Trends

Stormwater Banking Program



Residential
Density Bonus



1:1 Growth
Ratio

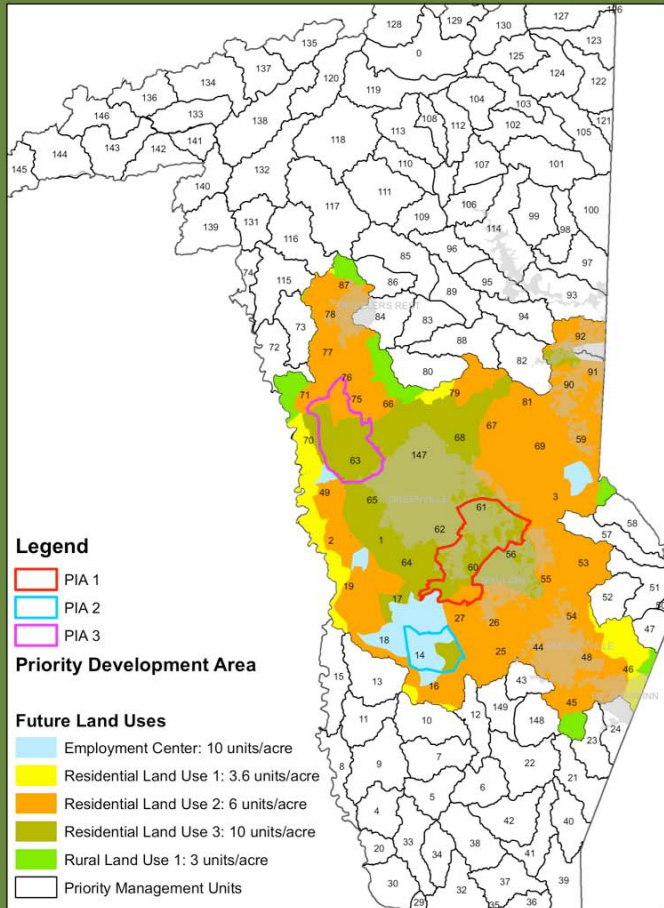


Stormwater
Retrofits

Upstate Forever
Stormwater Banking Program



Priority Development Area Density Levels



Goal of the SBP:

Generate funds for stormwater retrofits within Greenville County while encouraging development that is more benign to water quality.

Incentive:

- Residential density bonus=Higher profits
- Retrofit funds

Eligibility for participation:

- (1) Develop within the Priority Development Area
- (2) Use Decision Making Tool and attain minimum score
- (3) Pay a participation fee



Upstate Forever Stormwater Banking Program

Regional Scale Impacts to Water Quality

1. Promote Infill Development

- At least 75% of the project perimeters border previously-developed parcels (not including streets) (12 points).
- At least half of the land area within a half-mile radius of the project have been previously-developed (12 points).
- The area within a 1/2-mile radius of the project contains at least 75 street intersections (12 points)

12

2. Protect Waters of the U.S.

- No wetlands or waters of the U.S. are located on or within 75' of project site (5 points).
- Project maintains a minimum 75' buffer for wetlands and/or waters of the U.S. (5 points)
- Project disturbs area on or within 75' of wetlands or waters of the U.S. or fails to maintain a minimum buffer of 75' (0 points).

0

3. Protect Areas of Ecological Importance

- No trout waters or outstanding resource waters are located on or within 100' of the project (5 points).
- Project maintains a minimum, permanent 100' vegetated buffer for trout and/or outstanding resource waters (5 points).
- Project is located on or within 100' of trout waters or outstanding resource waters, and fails to maintain a 100' minimum vegetated buffer for these waters (0 points).

5

4. Protect Floodplains

- Project does not contain any floodplain areas (5 points).
- Project does not build any structures in the floodplain and establishes an easement to protect floodplains on site in perpetuity (5 points).
- Project builds structures in the floodplain (0 points).

0

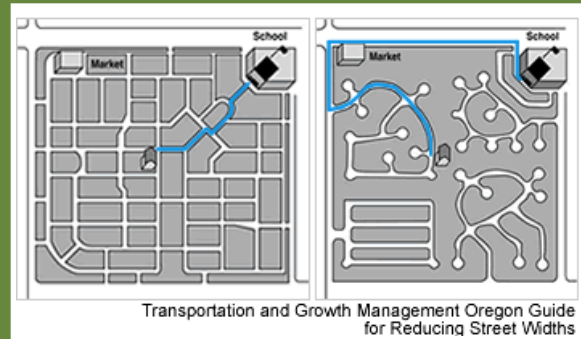
5. Minimize Erosion from Steep Slopes

- Project avoids slopes greater than 30% (5 points).
- Project restores 100% of existing slopes with atleast 75% native, non-invasive vegetation (5 points).
- Project does not avoid slopes greater than 30% or does not restore existing slopes properly (0 points).

5



Site



Transportation and Growth Management Oregon Guide for Reducing Street Widths

Neighborhood



Regional



Upstate Forever Decision Making Tool

DECISION-MAKING TOOL (DMT)