

Upper Neuse Clean Water Initiative: Drinking Water Protection Through Land Conservation



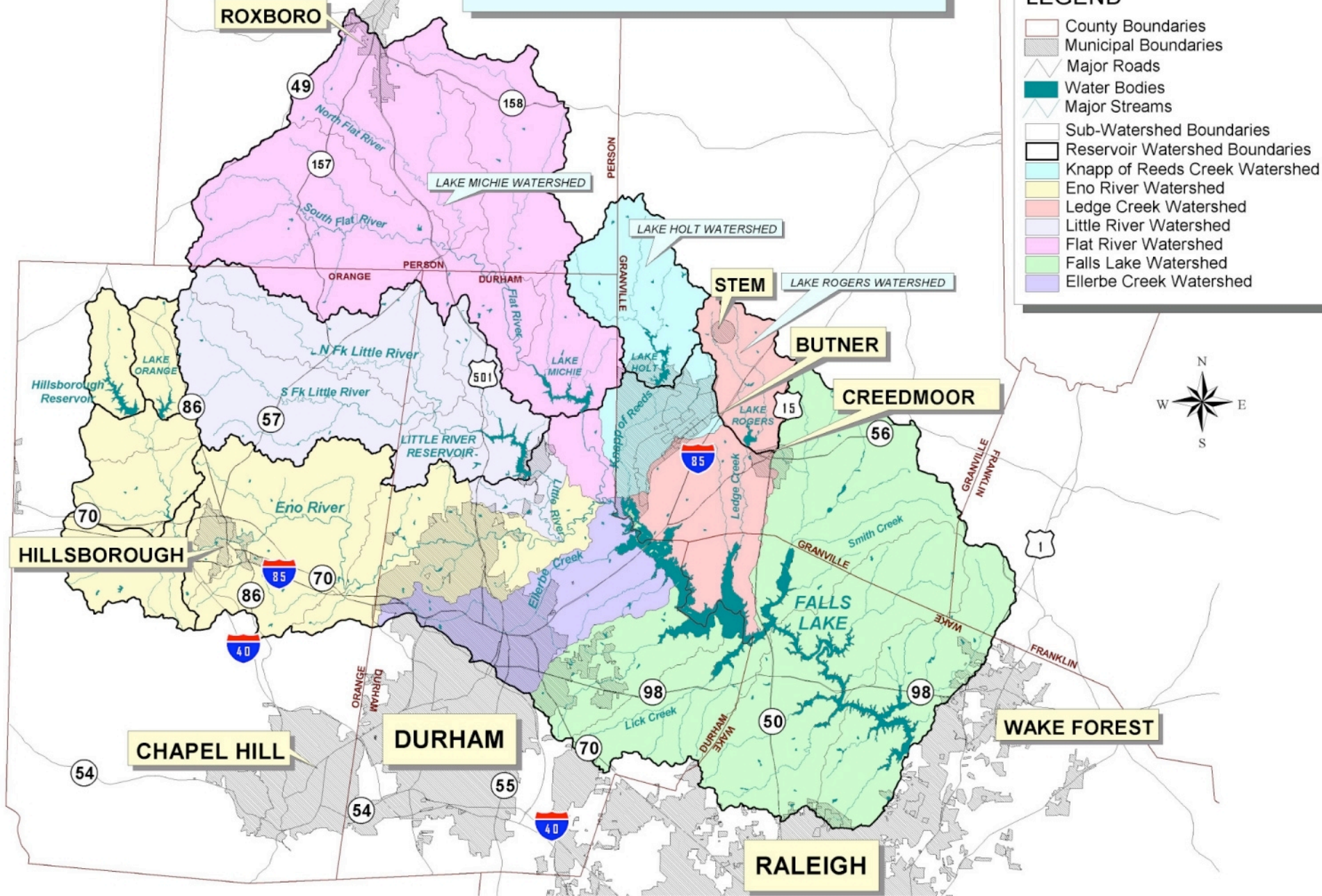
Lisa Creasman
Conservation Trust for North Carolina

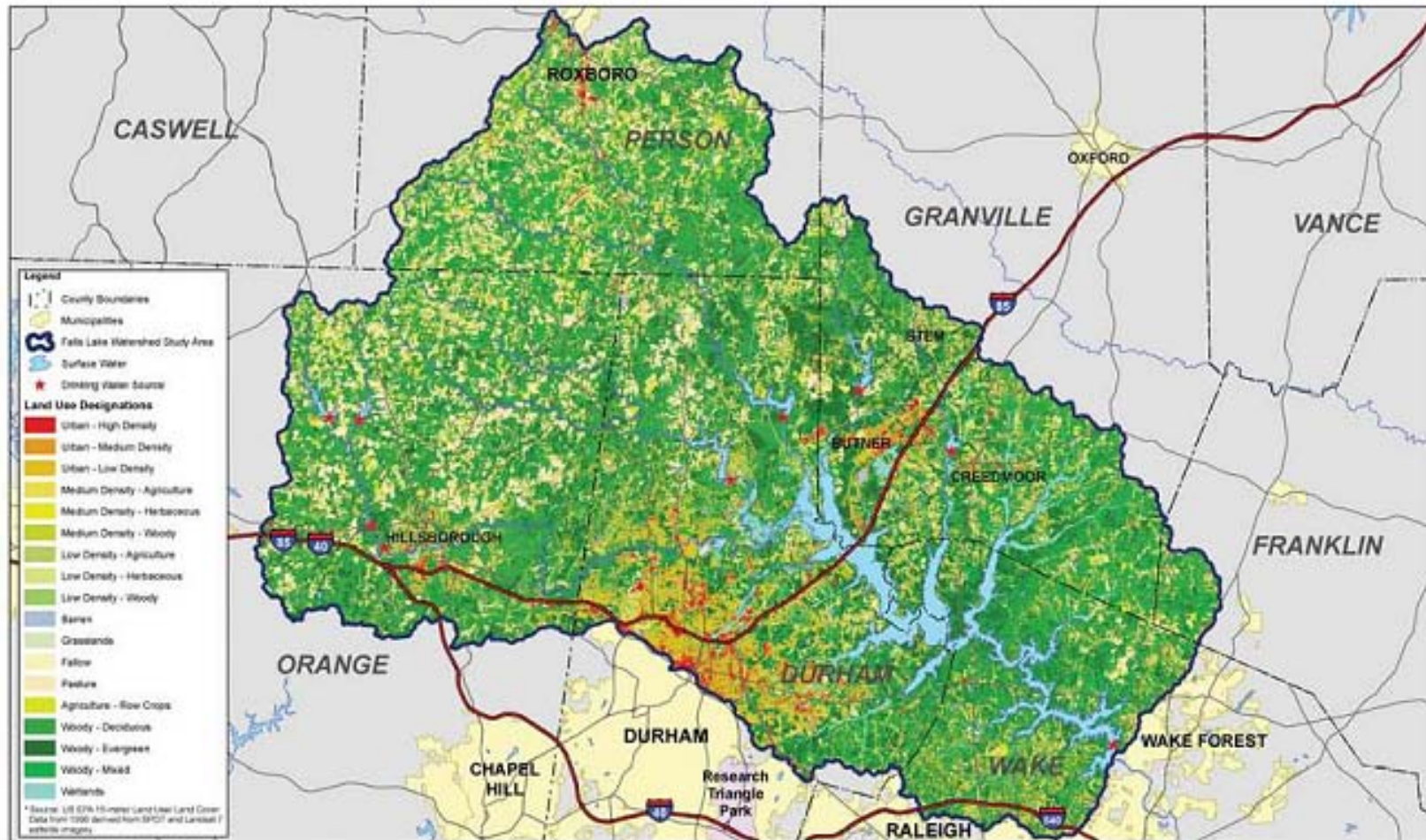


Upper Neuse River Basin

LEGEND

-  County Boundaries
-  Municipal Boundaries
-  Major Roads
-  Water Bodies
-  Major Streams
-  Sub-Watershed Boundaries
-  Reservoir Watershed Boundaries
-  Knapp of Reeds Creek Watershed
-  Eno River Watershed
-  Ledge Creek Watershed
-  Little River Watershed
-  Flat River Watershed
-  Falls Lake Watershed
-  Ellerbe Creek Watershed





Map created by the Triangle J Council of Governments
 Geographic Information Systems
 May 22, 2006

For use in the Upper Neuse Clean Water Initiative.
 Information on this map is for discussion and visualization purposes only



Ecosystem Services/Public Benefits from Land Conservation

- Wildlife habitat protection
- Increased public use and recreation areas
- Working forest and farm lands
- Reduce local governments' flood costs
- Improves air quality
- Improves water quality





Falls
Lake

Role of Land Conservation in Water Supply Protection

- Natural lands filter pollutants and slow runoff from surface water, resulting in cleaner water downstream, less flooding and soil erosion, and greater groundwater reserves.
- For every 10% increase in forest land cover, treatment and chemical costs decrease by 20%.
- In Suffolk County, New York water treatments costs are 10 times more expensive in unprotected source areas.



Source: *Benefits of Land Conservation*

Trust for Public Land

Upper Neuse Clean Water Initiative Conservation Organizations



- Ellerbe Creek Watershed Association
- Eno River Association
- Tar River Land Conservancy
- Triangle Greenways Council
- Triangle Land Conservancy
- Trust for Public Land
- Conservation Trust for North Carolina

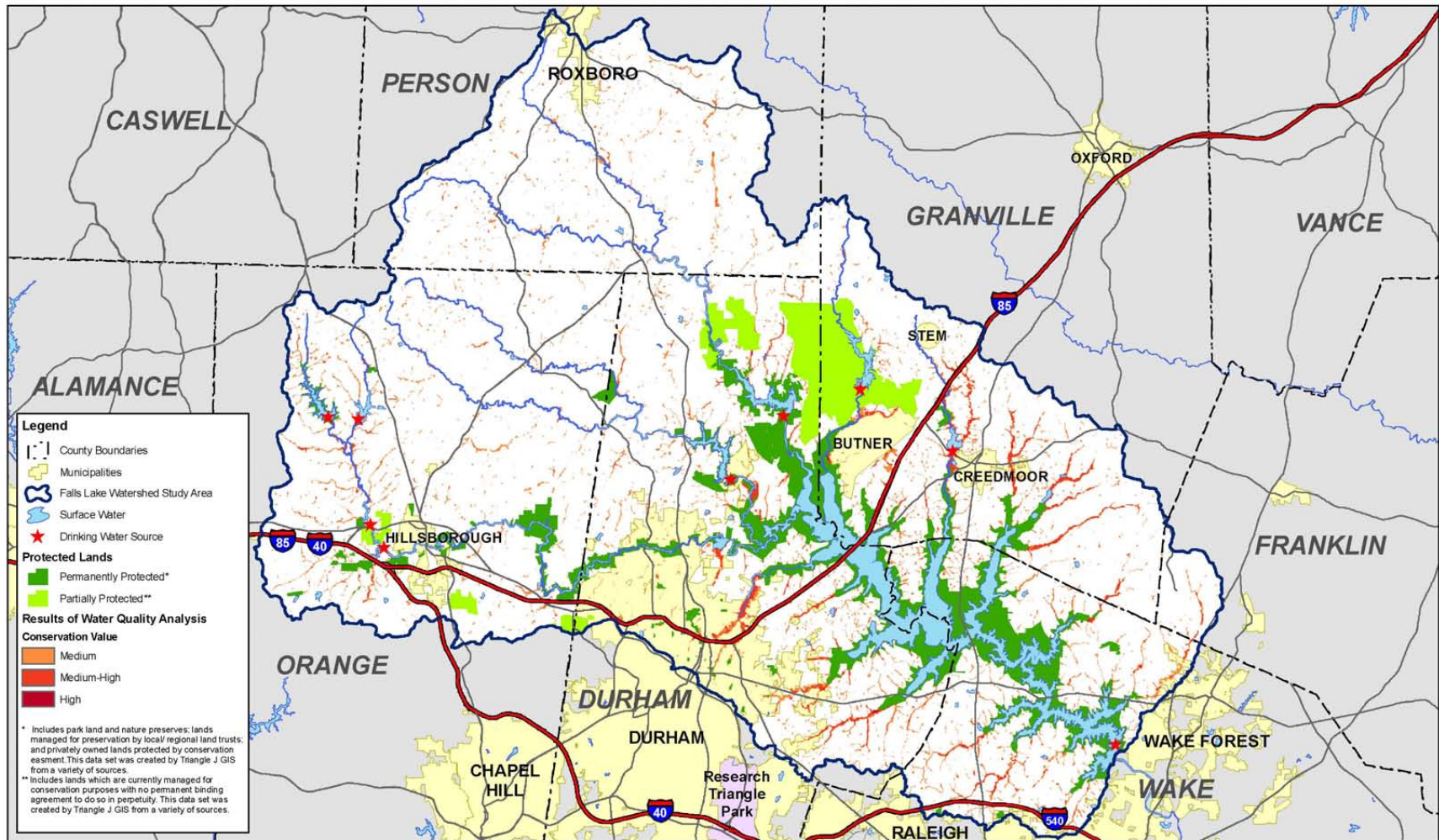
UNCWI Partners

- Private Landowners
- Local Government
 - City of Raleigh
 - Durham County
 - Wake County
 - Orange County
 - City of Durham (Parks and Recreation/ Stormwater Services)
 - Town of Butner
 - Town of Hillsborough
 - City of Creedmoor
- Upper Neuse River Basin Association
- South Granville Sewer and Water Association
- Duke Power
- Federal Agencies
 - USDA Farm and Ranch Lands Protection Program
 - US Fish and Wildlife Service
- State Agencies
 - NC Clean Water Management Trust Fund
 - NC Department of Agriculture Farmland Preservation
 - NC Dept of Environment & Natural Resources
 - NC Department of Transportation
 - NC National Guard
 - NC Plant Conservation Program
 - Natural Heritage Trust Fund
 - NC Botanical Gardens
 - NC Cultural Resources
 - NC Ecosystem Enhancement Program
 - NC State Parks

Upper Neuse Clean Water Initiative

Mission: The Upper Neuse Clean Water Initiative is a partnership effort to prioritize, and through voluntary actions, protect those lands most critical to the long term safety and health of all drinking water supplies for the communities in the Upper Neuse River Basin.

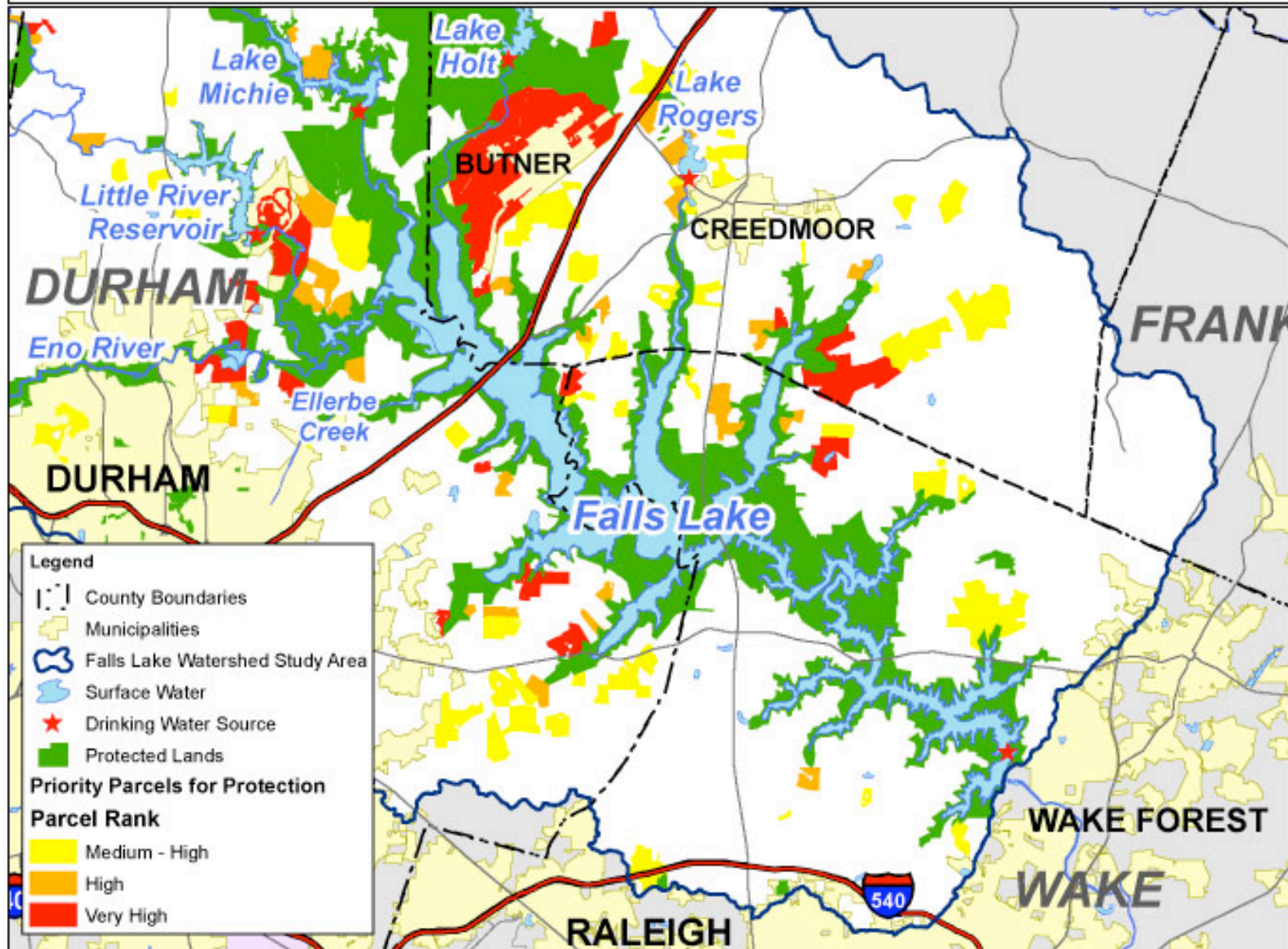
High Priority Lands for Water Quality Protection in the Upper Neuse River Basin



Map Created by the Triangle J Council of Governments
 Geographic Information Systems
 5/23/2006
 For use in the Upper Neuse Clean Water Initiative.
 Information on this map is for discussion
 and visualization purposes only.



Upper Neuse Clean Water Initiative - Falls Lake Focus Area



UNCWI PROJECT STATS

(12/05-12/16/10)

∴

LAND TRUST PROJECTS

Closed projects

Stream miles: 57 miles

Acres: 5,460

Value of property:
\$54,231,202

Donated value:
\$17,964,673

Projects: 51

Projects in progress

Stream miles: 22

Acres: 1,808




Value of property:
\$7,981,200

Donated value:
\$4,989,339

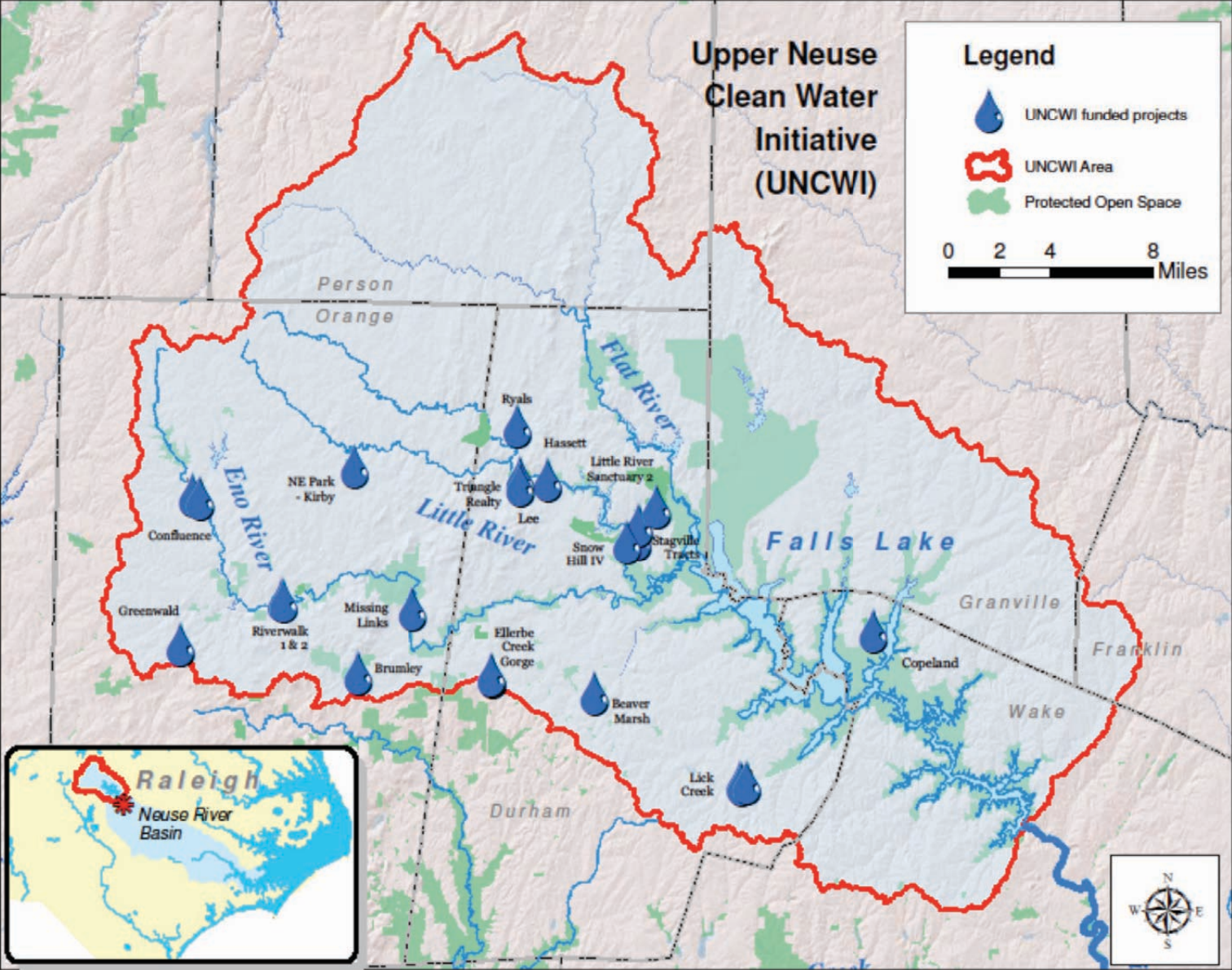
Projects: 26

Upper Neuse Clean Water Initiative (UNCWI)

Legend

-  UNCWI funded projects
-  UNCWI Area
-  Protected Open Space

0 2 4 8 Miles





UNCWI Next Steps

- Continue to work on options for local government financing for watershed protection in the Basin.
- US Endowment for Forestry and Communities project to develop a program on protecting water quality through sustainable forest management.
- Working with Duke University and World Resource Institute on a project to assess the ecosystem services in the Basin, export information to landowners through the “LandServer” tool, and better understand the relative economic value of the Green Infrastructure relative to the Gray Infrastructure in the Basin.

Economic Benefits

- A review of 40 studies by the Trust for Public Land found that **homes values increased by 16% and lots values increased by 35%** when located adjacent to open space.
- According to the National Association of Homebuyers' price estimator, proximity to parks and recreation facilities can increase **home values by six to 11 percent.**
- In Philadelphia parks **save the city \$5.9M annually in stormwater management costs.**
- Reduced downstream sedimentation, **maintaining the capacity of water supply reservoirs for a longer period.**





Lisa Creasman

lisa@ctnc.org

www.ctnc.org/uncwi
(919) 341-4444, x18