



Working Together: Countywide Climate Action Planning

Alex Hinds

Center for Sustainable Communities
Environmental Studies and Planning

Sonoma State University

NPSG, Charlotte, February 3, 2011



What's Next?

- Planner Protection Program
- Travel
- Teach – Buy a laptop and wear a tweed jacket
- Start a non-profit – Bureaucrats & Students w/o Borders (BS w/o Borders?)

Sonoma State University

Environmental Studies & Planning

- Conservation and Restoration
- Energy Management and Design
- Education and the Environment
- Outdoor Leadership
- Planning
- Water Quality Technology and Hazardous Materials Management





The Environmental Technology Center at Sonoma State University

SSU's Green Certificate Programs

- Green Building Professional Certificate
- Sustainable Landscape Professional Certificate
- Sustainable Development & Climate Change



Center for Sustainable Communities

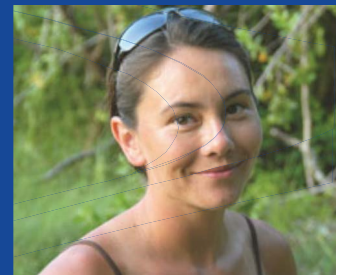
- Draws upon recently “recycled” professionals, SSU faculty, staff, and students
- Provides speakers, student training, and tech assistance
- Prepares climate action & sustainability plans, energy ordinances, assessments
- Links land use planning and public health



A Building that Teaches

Center for Sustainable Communities – Recycled Professionals & Students

- **Alex Hinds**, Interim Director
- **Tom Jacobson**, Dept Head/Professor, ENSP
- **Alexandra von Meier**, Professor Energy, ENSP
- **Val Alexeeff**, Senior Consultant
- **Kathleen Walsh**, Volunteer/Special Consultant
- **Wayne Goldberg**, Adjunct Faculty/ Special Consultant
- **Aluxa Corrales Lalicker**, ENSP graduate
- **Cassie Chapple**, Senior, Energy, Student Assistant
- **Dan Pierce**, Energy, Student Assistant
- **Jeremey Arroyo**, Planning, Student Intern





Projects

- Sonoma Countywide Land Use & Health Workbook
- Marin BERST Countywide Green Building Ord.
- SLO Planning & Building Assessment
- New Sustainable Dev & Climate Change Certificate
- CalGreen Statewide Building Code Class
- Climate Action Plans – Vallejo, Santa Rosa

Sonoma Countywide GHG Reduction Implementation Program (GRIP)

SSU's Role:

- Strategy Development
- Innovation/Implementation
- Herding Cats



Get A GRIP?

- ❖ Create model for local general plans, ordinances, building codes & implementation programs
- ❖ Incorporate greenhouse gas reduction & sustainable community strategies into core business practices
- ❖ Achieve results thru an integrated set of regulations, public outreach, and technical assistance



- ❖ Quantify desired outcomes at municipal operations & community wide levels
- ❖ Link outcomes to indicators, reports & scorecards
- ❖ Align environment, economy & social equity benefits
- ❖ Prioritize implementation measures based on feasibility & effectiveness
- ❖ Create a detailed recipe book



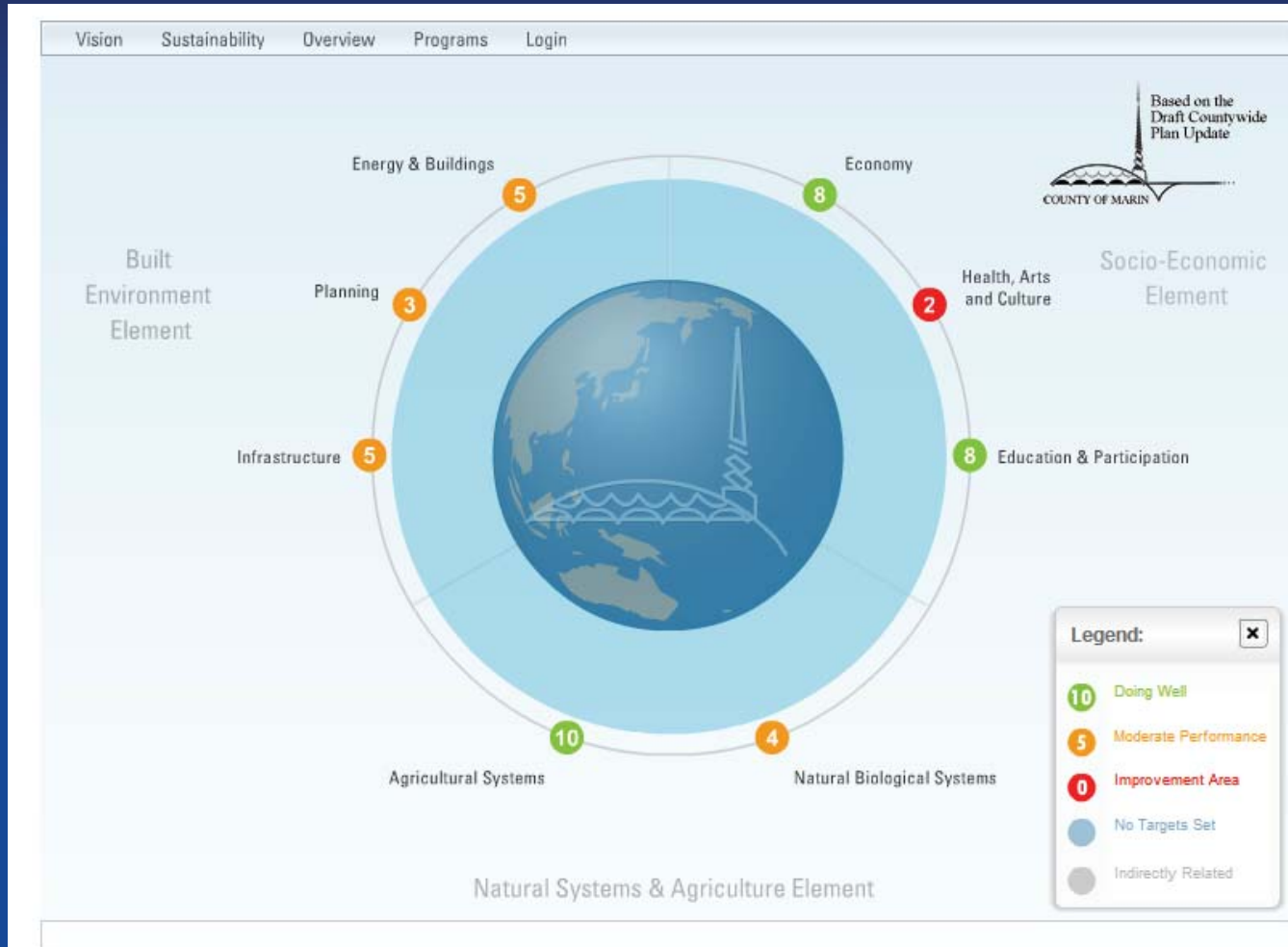
Desired Outcomes

- ❖ Community-based CAP revised to meet current State & Regional requirements
- ❖ Sonoma County, Cities & RCPA adopt & implement
- ❖ Environmental review streamlining benefits for subsequent projects
- ❖ Ongoing progress toward GHG reduction and adaptation goals

Sonoma County's Community-based Climate Action Plan



New See-it Viewer: allows the public to follow progress of key indicators

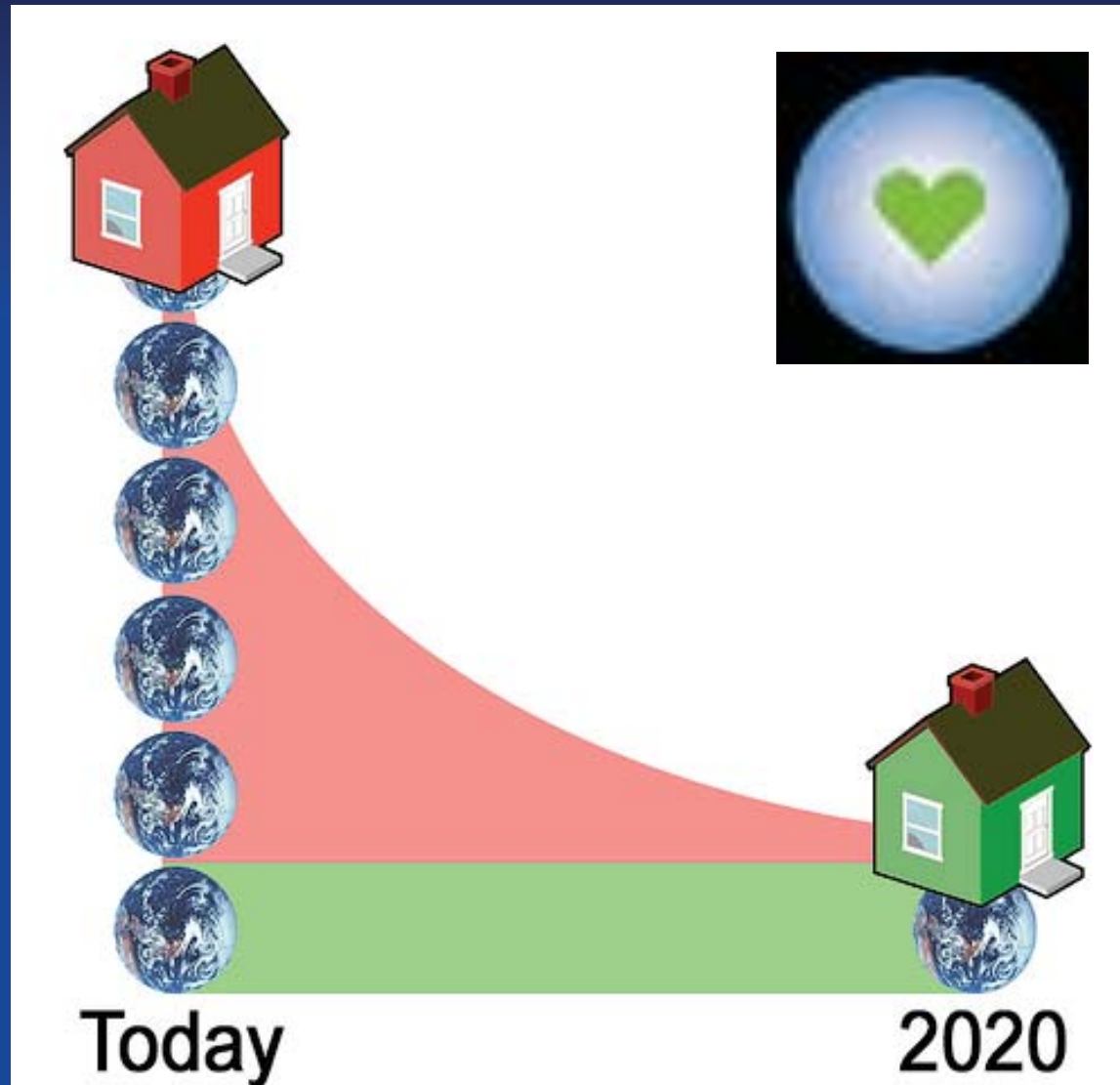


Sonoma Mountain Village N. America's Proposed 1 Planet Community

- 200.1 Acres
- 1892 Housing Units
- 600,000 Sq. Ft. Commercial



One Planet Communities





Sonoma Mt. Village -1.14 MW Array – so far...

NET ZERO CARBON?

- **ZERO USE OF FOSSIL FUELS FOR BUILDING ENERGY**
- New Buildings Exceed CA T24 by 50-80%
- Existing Buildings Exceed T24 by 30%
- 100% on-site renewable energy
- 100% renewable heating & cooling
- Efficient Water Infrastructure





NORDSEE

1
Landwasser

VAG

1
Littenweiler

VAG

Teich

LEZE

H&M



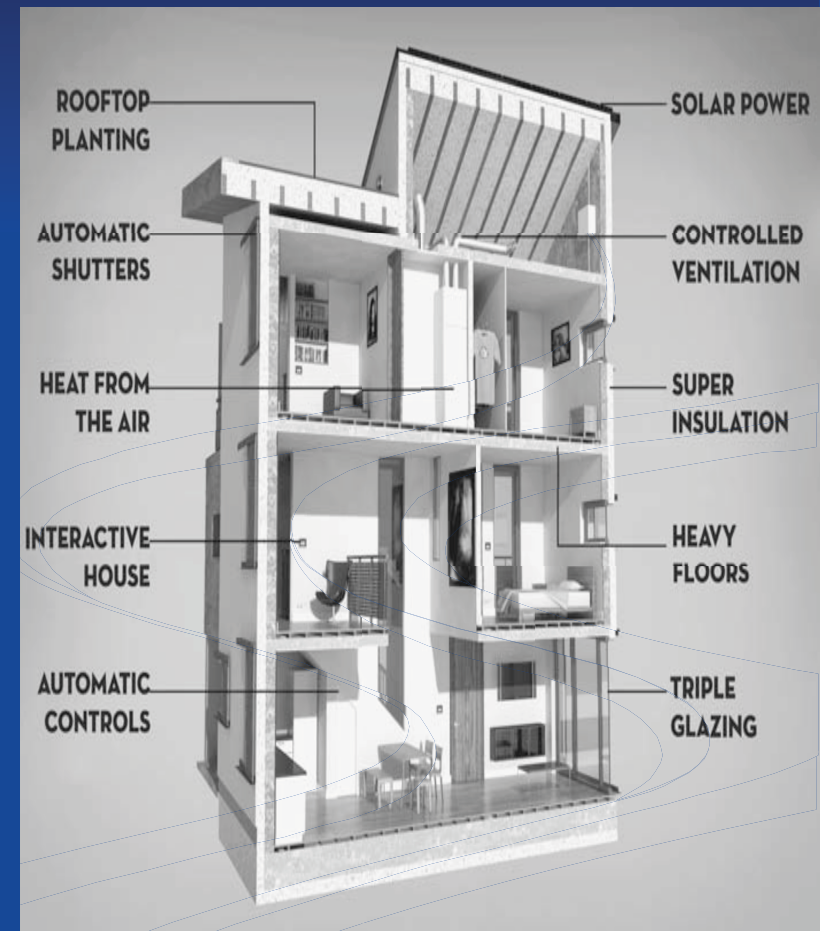
transportation
OPTIONS



. ENGLAND . BELGIUM . HOLLAND . DENMARK . SWEDEN .

European Building, Energy & Economics

- Buildings last longer with expectation of 100 + yrs
 - Design & costs higher
- 1000 yrs “craftsmanship/ apprenticeship” - not US mass-production model
- Per Capita Kilowatts
 - US: 12,000
 - Europe: 6,000
 - Global Average 2,000



Economist Herman Daly's Principles...

1. *Renewable resources should not be used faster than they regenerate.*
2. *Non-renewable resources should not be used faster than renewable substitutes for them can be put into place.*
3. *Pollution and waste should not be emitted faster than natural systems can absorb, recycle or render them harmless.*



Individual Actions to Reduce GHGs





A Building that Teaches

Contact Information:

Alex Hinds

Katie Musick

Center for Sustainable Communities,
Dept of Environmental Studies and Planning
Sonoma State University, Rohnert Park, CA

hindsa@sonoma.edu

musick@sonoma.edu

