



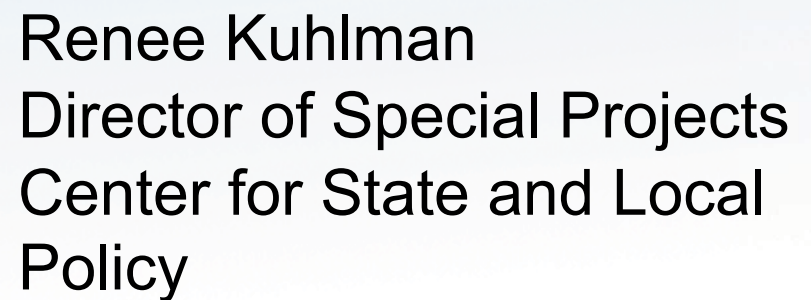
ROSA PARKS SCHOOL
AT NEW COLUMBIA COMMUNITY CAMPUS



NEEDED! Schools That Deliver A First Rate Education and Encourage Healthier Citizens and Communities



NATIONAL
TRUST
FOR
HISTORIC
PRESERVATION®



Renee Kuhlman
Director of Special Projects
Center for State and Local
Policy

... how can we maximize use of space?

... how can we sustain our communities?

... how can we encourage diverse, walkable schools?



Good for Students, Good for Communities

Educational Benefits

Vibrant Communities

- ✓ Personal Ties
- ✓ Property Values

Environmental Impacts

- ✓ Reduce Sprawl
- ✓ Air Quality

Save on Costs

- ✓ Transportation
- ✓ Construction
- ✓ Operating

Healthier Families

- ✓ Walk or Bike
- ✓ After Hours Use



... “factors such as school location have played a significant role in the decreased rates of walking to school, and changes in policy may help to increase the number of children who are able to walk to school.”

[Committee on Environmental Health](#)
[American Academy of Pediatrics \(2009\)](#)

Community-Centered Schools Are Not the Norm



NATIONAL TRUST FOR HISTORIC PRESERVATION®

Policy Briefs at www.PreservationNation.org

Why Johnny Can't Walk to School



**NATIONAL
TRUST
FOR
HISTORIC
PRESERVATION**

Helping Johnny Walk to School

Policy Recommendations for Removing Barriers to Community-Centered Schools

BY RENEE KUHLMAN



Helping Johnny Walk to School Project

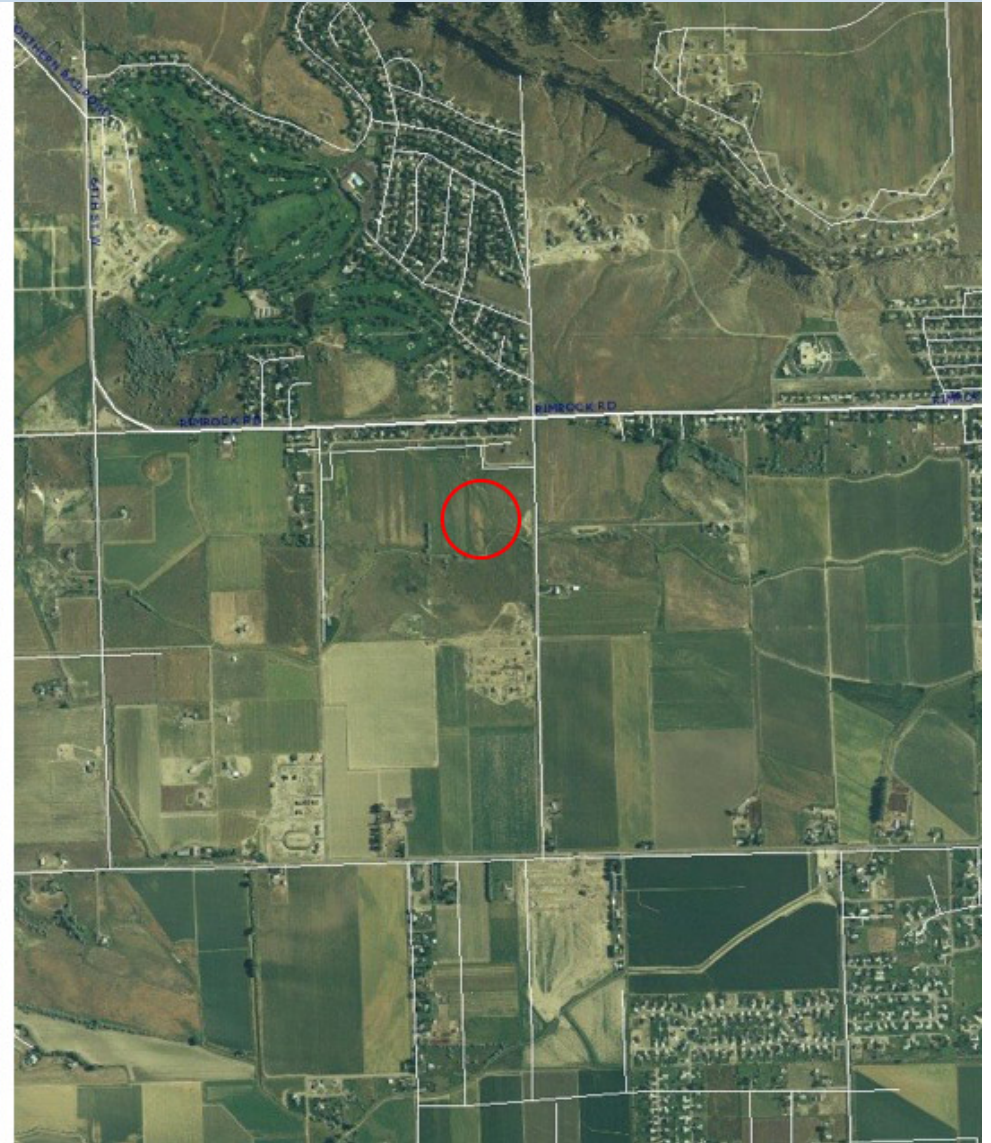
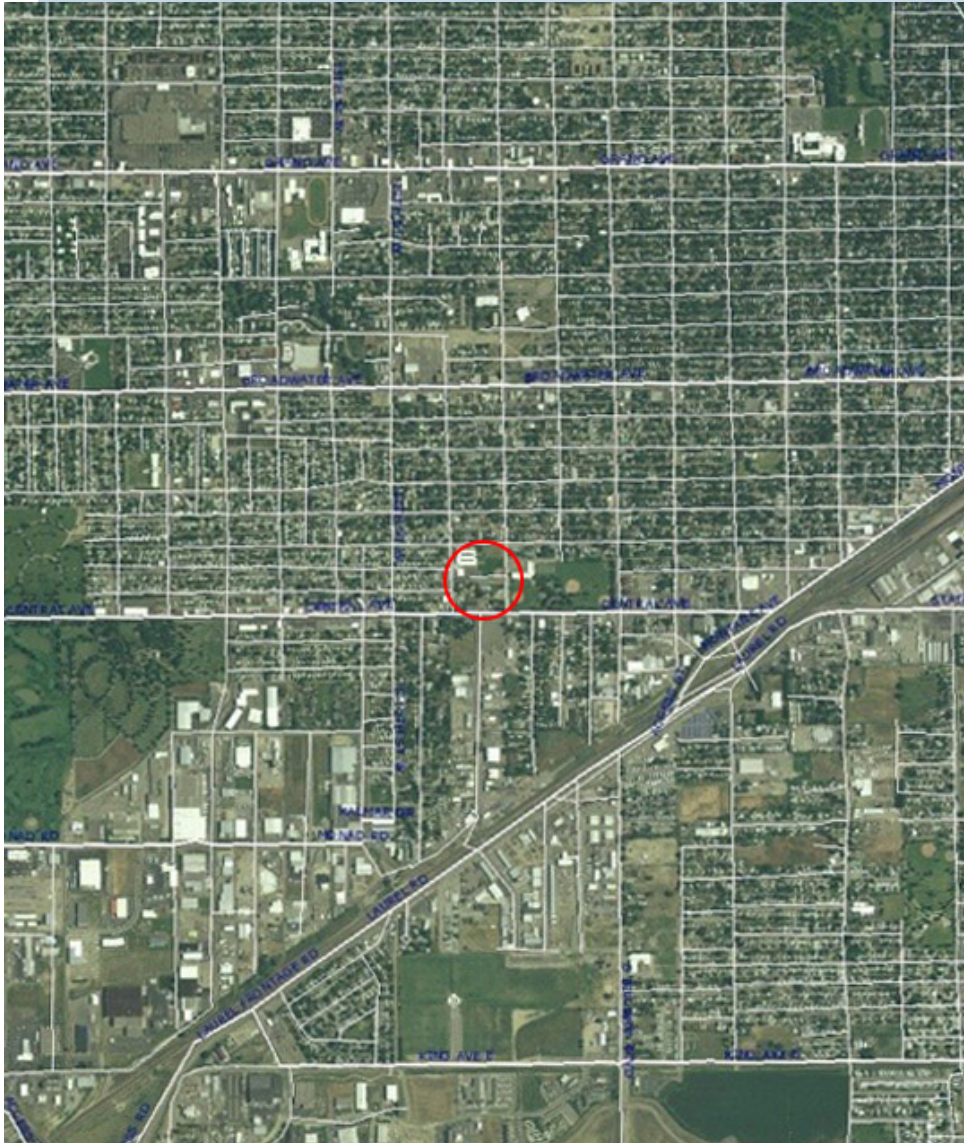
Grants, Research, and Technical Assistance Provided Since 2008

Arkansas
California
Georgia
Idaho
Illinois
Kentucky
Louisiana
Mississippi
Missouri
Montana
Nebraska



New Hampshire
New York
Ohio
Oklahoma
Oregon
New York
Pennsylvania
Rhode Island
South Carolina
Tennessee
Virginia
Wyoming

Q: Which site encourages more active transportation and serves the most residents?
A: The community-centered location





School Closures: Impacts to Weigh

- Are we increasing student travel time? What are impacts on health? education?
- Are we losing a community “anchor”?
- Which schools provide more opportunities for walking and biking? ... more participation in after-school activities?
- Who actually saves money? Are we shifting transportation costs to the State? To parents?
- Are we lowering surrounding property values?



In March 2010, the Kansas City, Missouri, school board voted to close 28 of the district's 61 schools due to declining enrollment and a soaring budget deficit.

Renee Kuhlman

State and Local Policy

National Trust for Historic Preservation

Phone: 202-588-6234

renee_kuhlman@nthp.org

www.preservationnation.org

EPA School Siting Guidelines

Comments due Feb. 18, 2011

www.epa.gov/schools/siting



NATIONAL
TRUST
FOR
HISTORIC
PRESERVATION