



From Transportation to Climate Protection: Coordination at the Countywide Level

Pete Parkinson, AICP
Planning Director, County of Sonoma, CA

New Partners for Smart Growth Conference - February 2011

Sonoma County: already a leader in addressing climate change

- County and all 9 cities have already set ambitious and progressive greenhouse gas reduction targets
- Solid anti-sprawl policies
- Cities and counties walking their talk for municipal operations



Big Challenges remain for Sonoma County and the Bay Area Region

- Transportation and land use related emissions are harder to influence
- VMT has continued to grow faster than population





A little “help” from the state . . .

- Senate Bill 375 signed into law in 2008
- Intended to serve as the transportation and land use implementation of AB 32
- State air board sets passenger vehicle greenhouse gas reduction targets for each metropolitan region
- Long range planning horizons: 10 and 25 years



SB 375 in a Nutshell

- A true regional planning bill; applies to 18 metropolitan planning organizations in CA
- Built around existing Regional Transportation Plan process
- More robust local and public participation
- Centerpiece is a new “Sustainable Communities Strategy” to be included in the RTP



What is a Sustainable Communities Strategy?

- Aligns planning for transportation, land use, affordable housing at regional scale
- Aimed at reducing GHG from passenger vehicles to meet targets set by state air board for 2020 and 2035
- Ultimately -- a huge shift in how planning is done in California



What SB 375 doesn't do . . .

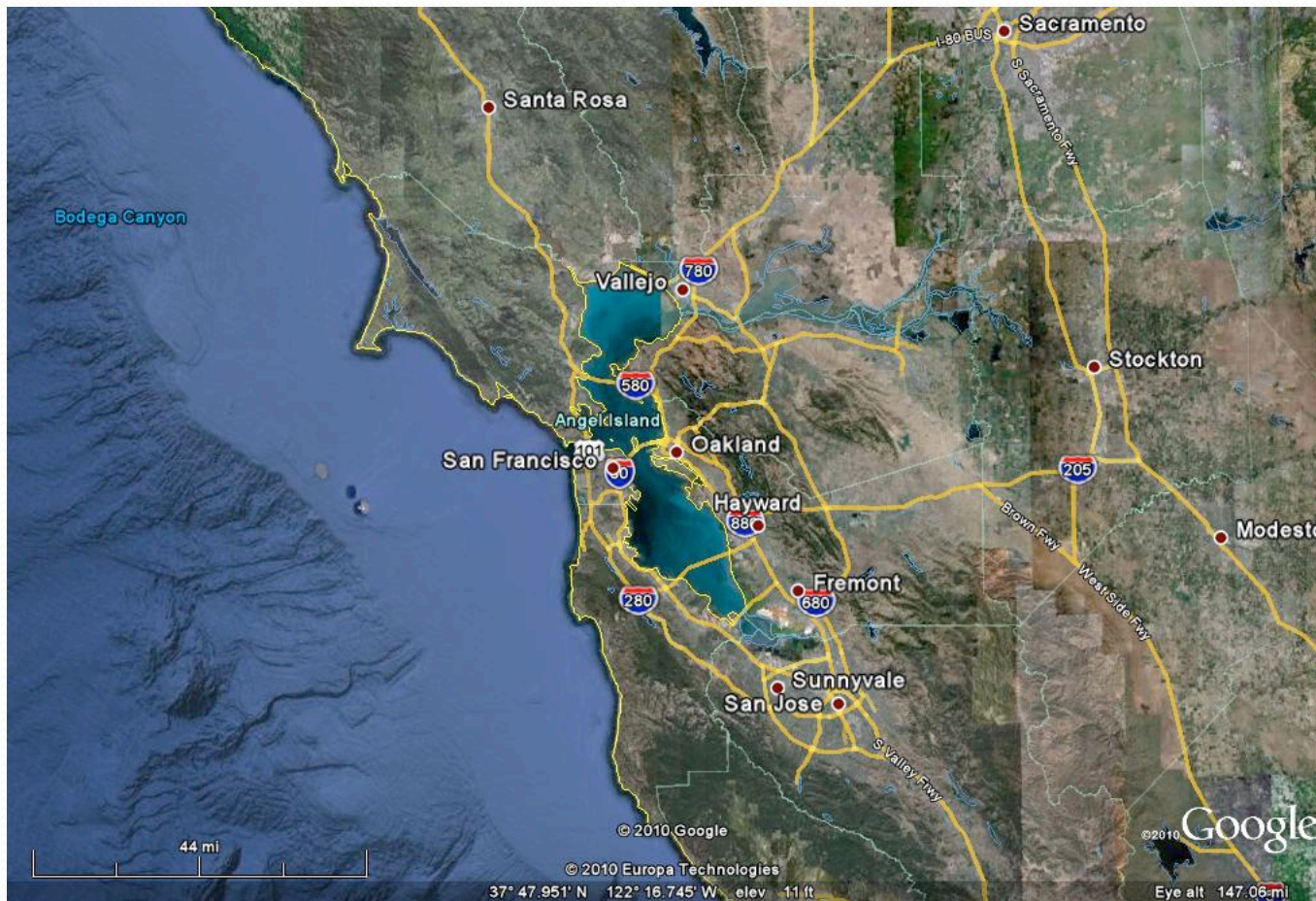
- Supersede local land use authority
- Limit authority of state air board
- Abrogate any vested right
- Require local general plans to be consistent with an SCS
- Authorize an SCS that is inconsistent with federal transportation planning law
- Provide relief from compliance with other laws



BIG Challenge: MPOs Don't Control Land Use

- That's where local governments come in
- But the MPOs do control most transportation investments
- SB 375 is NOT a mandate for local government; but it feels like one
- Local communities taking it very seriously—both electeds and citizens

San Francisco Bay Region





Broader Challenges for Regional Planning

- Regions are very diverse
- SF Bay Area region includes dense urban core cities (San Francisco, Oakland, San Jose) and very rural, agricultural areas (Sonoma and Napa counties)
- Infrastructure deficits exacerbated by declining transportation funds
- Environmental justice issues abound



SCS Process Just Getting Underway

- In Sonoma County, the SCTA/RCPA will play a key role as convener and coordinator
- Intense information exchange between local governments and the MPOs
- Initial vision scenario due next month
- Transportation funding a huge concern



But in Sonoma County, we're not waiting . . .

- County and nine cities collaborating on a Greenhouse Gas Reduction Implementation Plan (GRIP)
- An inter-jurisdictional effort focused on making a difference - results driven
- Streamline environmental review for consistent projects
- Anticipate the SCS



Sonoma County G.R.I.P.

- Strategy: Builds upon past efforts to comply with new regulatory guidelines & institutionalize the plan
- Integration: A model implementation code & best practices book for integration into general plans and zoning codes
- Implementation: monitoring, sustainability indicators and GHG reduction

Sonoma County
jurisdictions
working together
to implement
planning for
climate change

**SONOMA COUNTY GREENHOUSE GAS REDUCTION AND
IMPLEMENTATION PROGRAM (GRIP)**

**SUSTAINABLE COMMUNITIES PLANNING GRANT
AND INCENTIVES PROGRAM APPLICATION
FOCUS AREA #1: LOCAL SUSTAINABILITY PLANNING**

SUBMITTED TO THE CALIFORNIA STRATEGIC GROWTH COUNCIL

August 31, 2010



Submitted by:
Sonoma County
2550 Ventura Ave.
Santa Rosa, CA 95403

In Coordination with:

City of Cloverdale • City of Cotati • City of Healdsburg • City of Petaluma • City of Rohnert Park
City of Santa Rosa • City of Sebastopol • City of Sonoma • Town of Windsor

In Partnership with:

Sonoma County Regional Climate Protection Authority • Sonoma County Transportation Authority • Sonoma
County Agricultural Preservation and Open Space District

Additional Project Partners:

Climate Protection Campaign • Sonoma State University Center for Sustainable Communities