

Andrea Ramage – Background

Engineering for municipal structures

Started CH2M HILL's internal sustainability program (2000-2005)

- ✓ *ISO 14001 Environmental Management Systems*
- ✓ *Global Reporting Initiative (3 corporate sustainability reports)*
- ✓ *WRI Greenhouse Gas Protocol*
- ✓ *LEED-NC and LEED-NB*

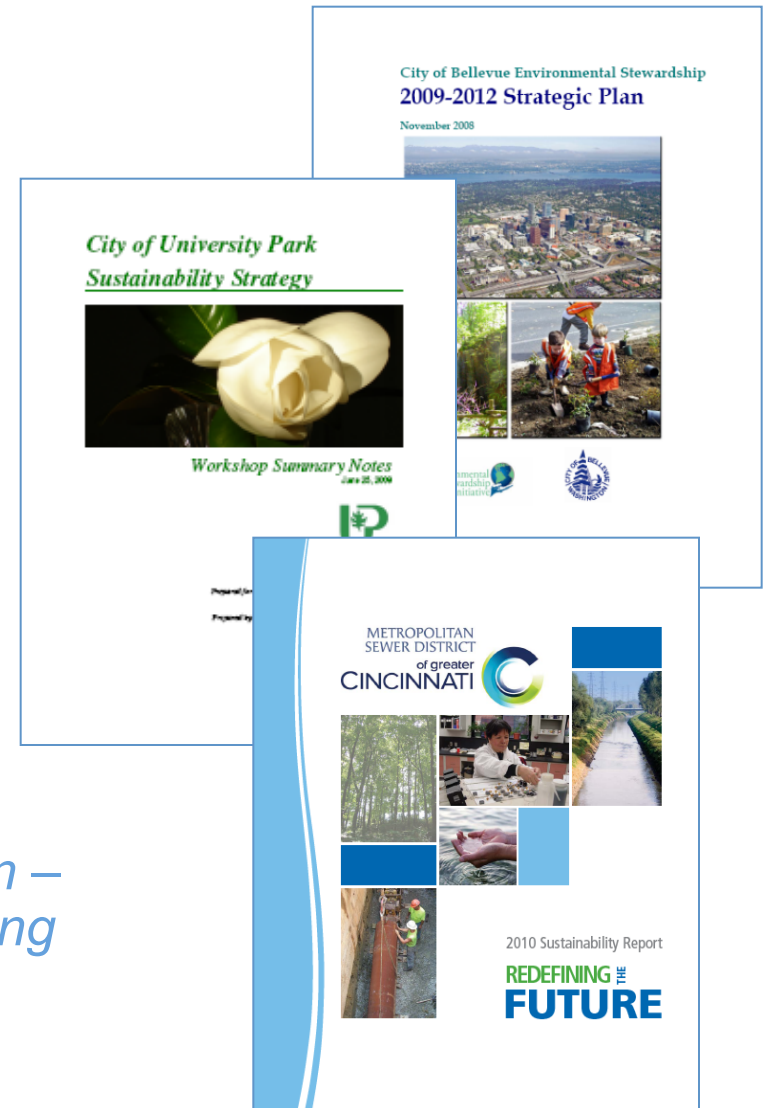
Led CH2M HILL's enterprise-wide, client-facing sustainability program for 5 years (2005-2009)

- ✓ *Sustainable Sites Initiative (SSI)*
- ✓ *CEEQUAL*
- ✓ *More LEED*
- ✓ *Self-defined rating system for WWTP expansion*



Sustainability Strategies, Planning, Reporting, and Rating

- *City of Bellevue – Environmental Stewardship Plan linked to Comprehensive Plan*
- *City of University Park – Sustainability Strategy and Goals*
- *Metropolitan Sewer District of Greater Cincinnati – 2010 Sustainability Report*
- *American Water Works Association – scoping study for sustainability rating system for the water industry (and perhaps wastewater, too) – in progress*



A Few Examples of Sustainability “Standards”

- LEED® for Neighborhood Design
- ICLEI/USGBC/CAP STAR Community Index
- CEEQUAL (UK-based Civil Engineering Environmental Quality Assessment and Award Scheme)
- Sustainable Sites Initiative
- Global Reporting Initiative
- UL880 Corporate Reporting Standard
- Forest Stewardship Council Standards for Certified Wood
- WRI Greenhouse Gas Reporting Protocol
- FHWA’s Web-based Transportation Evaluation Tool
- Institute for Sustainable Infrastructure Rating Tool