



# Integrating Sustainable Design Elements into Form-Based Codes

Dan Slone  
McGuireWoods LLP  
901 East Cary Street  
Richmond, Virginia 23219  
804.775.1041  
[dslone@mcguirewoods.com](mailto:dslone@mcguirewoods.com)



THE SEASIDE INSTITUTE



Sky Institute

Greening America



ONE PLANET COMMUNITIES

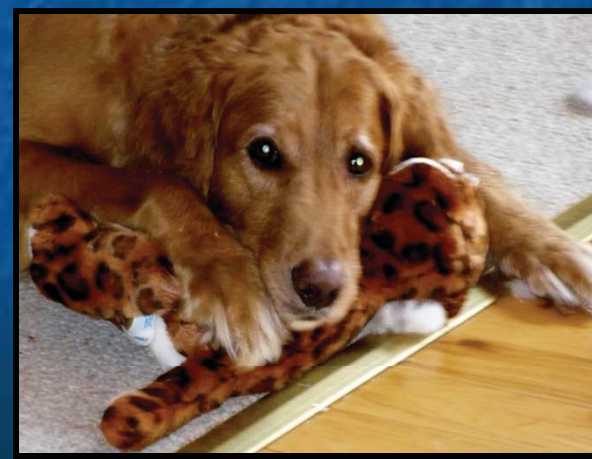
FBCI  
Form-Based Codes Institute

Rideshare Institute

Green Building Science Institute

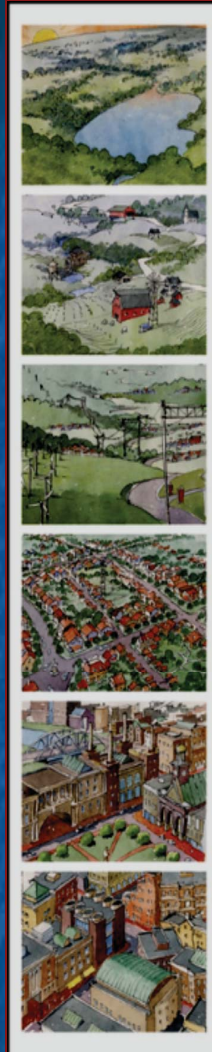
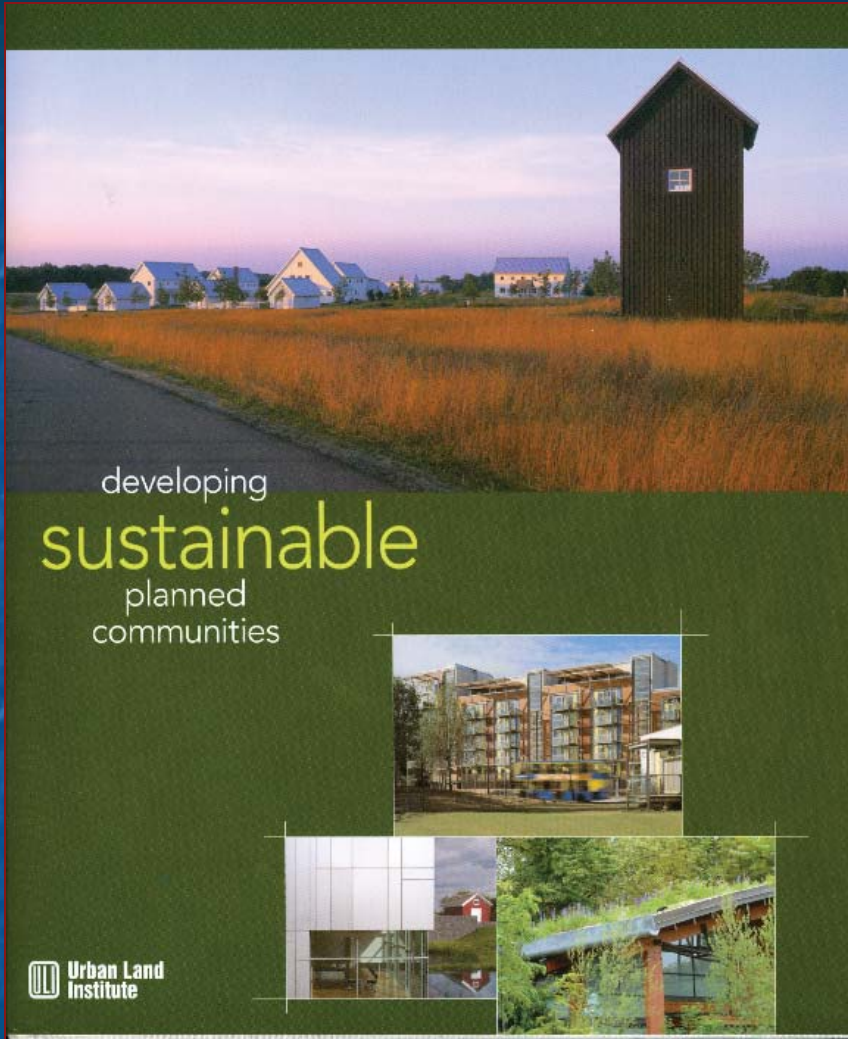


World Green Building Council



CNU

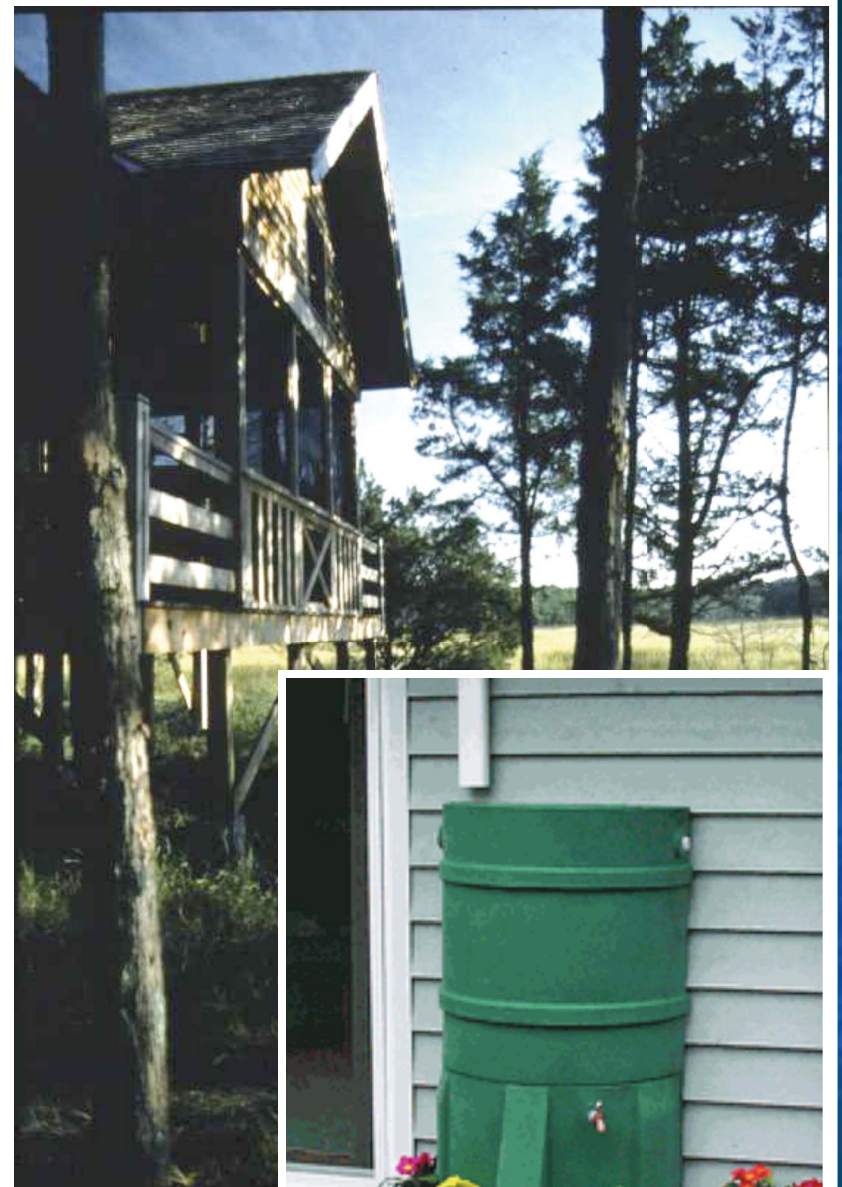
CONGRESS FOR THE NEW URBANISM

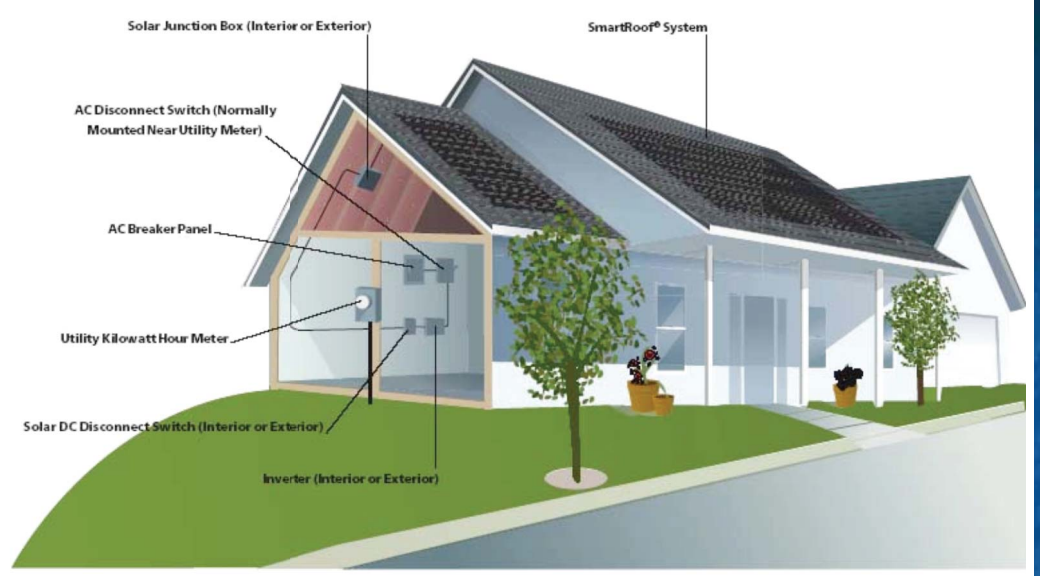


**A LEGAL GUIDE TO  
URBAN AND  
SUSTAINABLE  
DEVELOPMENT**  
for Planners,  
Developers, and  
Architects

Daniel K. Slone and Doris S. Goldstein  
with W. Andrew Gowder Jr.

Foreword by Andrés Duany





*Lord Residence, Maine (Solar Design Associates)*

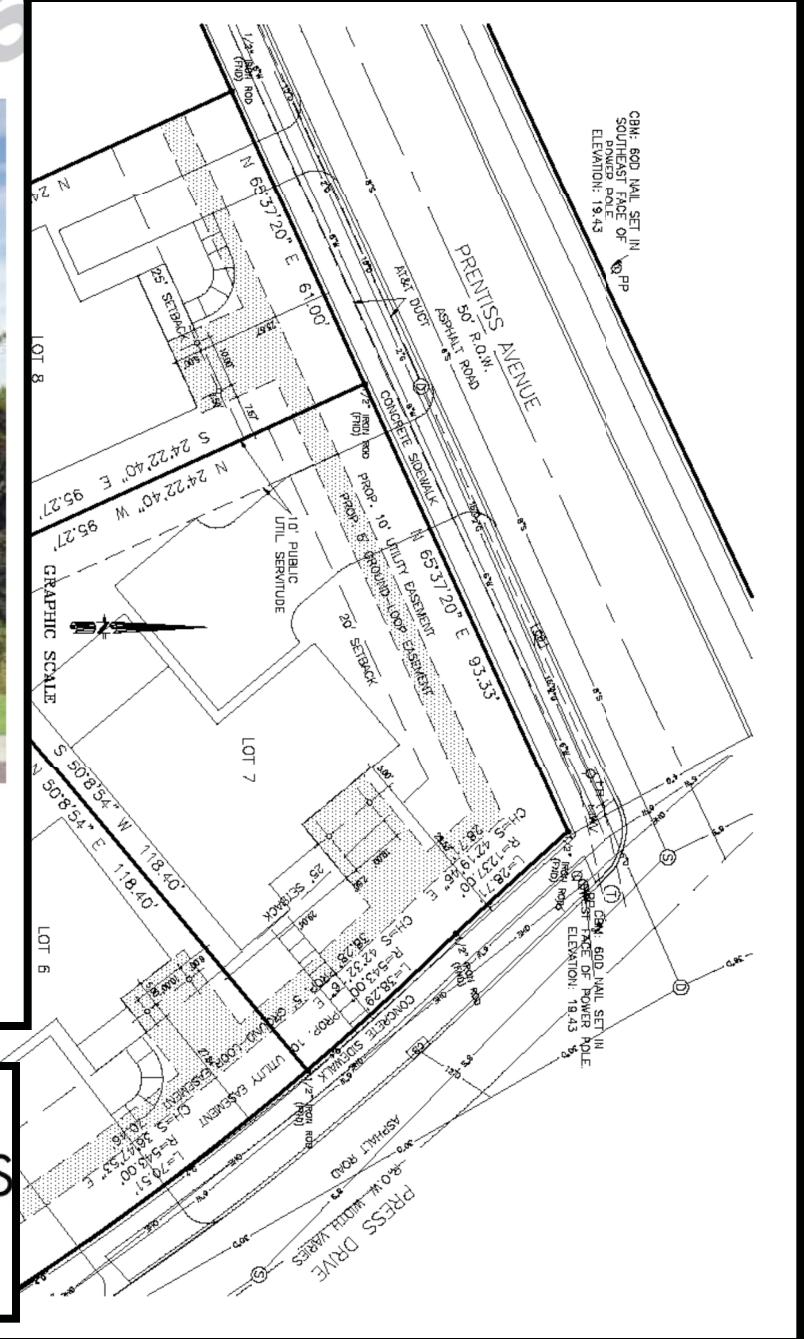




*PV array, Wolf Residence, Vermont  
(NREL photo)*



COPYRIGHT 2007 STALWARTBUILT HOMES, INC. ALL RIGHTS RESERVED



**StalwartBuilt**

HOMES

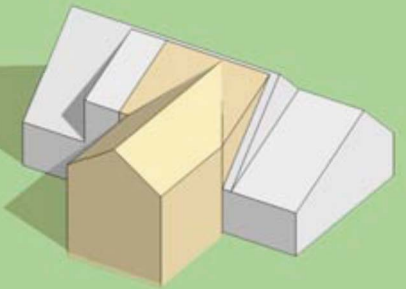
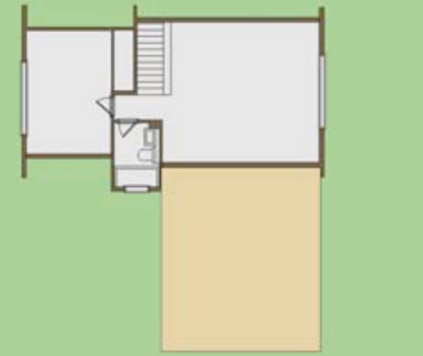
*beyond green*





# Homeowner's Enhancement Guide (Henrico County, Virginia)

- ✓ Provide ideas and tools to modernize and enhance homes and property, especially in mature neighborhoods
- ✓ Chapters address popular style homes (ranch, Cape Cod, etc) and include diagrams, checklists, resources and reference material

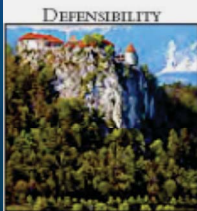
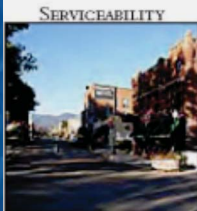
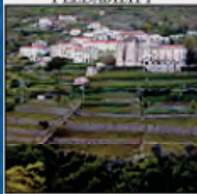




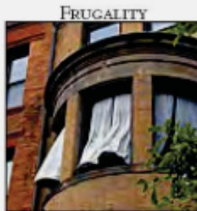
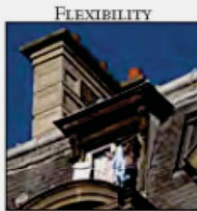
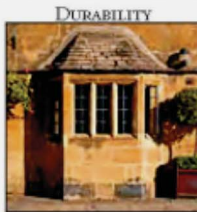
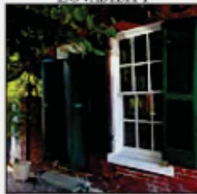
The  
NEW URBAN GUILD



CHARACTERISTICS  
of  
SUSTAINABLE  
PLACES:



CHARACTERISTICS  
of  
SUSTAINABLE  
BUILDINGS:



**WHAT IS THE ORIGINAL GREEN?**

Construction originally had no choice but to be green before the Thermostat Age. It was sustainable because people first created places that were feedable, serviceable, accessible, and defensible. Within sustainable places, it was possible to build sustainable buildings that were first lovable, then durable, flexible, and frugal. Today's popular green building discussion focuses only on certain aspects of frugality. The Original Green is a much broader approach that delivers true sustainability.

**WHY ATTEND?**

Are you thinking of beginning to design or build green, but confused by the rash of claims about the latest green materials? Or are you already working to build sustainably, but uneasy with the notion that green building is just about the gadgets? The Original Green is far more than just Gizmo Green; it begins with the simplest things first, just as it always has. And because it is more comprehensive, there are many simple things you can do to help. But the Original Green Workshop covers the difficult things, too, including some that are yet to be figured out. So come to learn, but also come knowing that your ideas might become part of a new solution. Register now at the link below.

The New Urban Guild is delighted to partner with Restore Media at the Traditional Building Exhibition & Conference in Boston this spring.

TRADITIONAL BUILDING  
EXHIBITION AND CONFERENCE  
Navy Pier Festival Hall  
**CHICAGO**  
conference september 18-20  
exhibition september 19-20  
**2008**  
Restoring the Past. Building the Future.

Come to the Original Green Workshop, then catch some of the Traditional Building Exhibition & Conference once it's over.

GET MORE INFORMATION AND REGISTER ONLINE AT:  
[HTTP://WWW.NEWURBANGUILD.COM/FOUNDATION/WORKSHOPS.HTML](http://www.newurbanguild.com/foundation/workshops.html).  
PLEASE CONTACT JANNA WHITLEY WITH ANY QUESTIONS.  
(JANNA@NEWURBANGUILD.COM OR 786•275•6000)

[www.guildfoundation.org](http://www.guildfoundation.org)

# Passive Survivability - Definition

“Maintaining livable conditions in a building in the event of an extended power outage or loss of heating fuel or water.”

–*Environmental Building News, May 2006*

# Natural Ventilation



*Zion Visitor's Center, Zion National Park showing passive cooling towers in which hot air drawn in at the top and falls down through evaporative pads (NREL photo)*

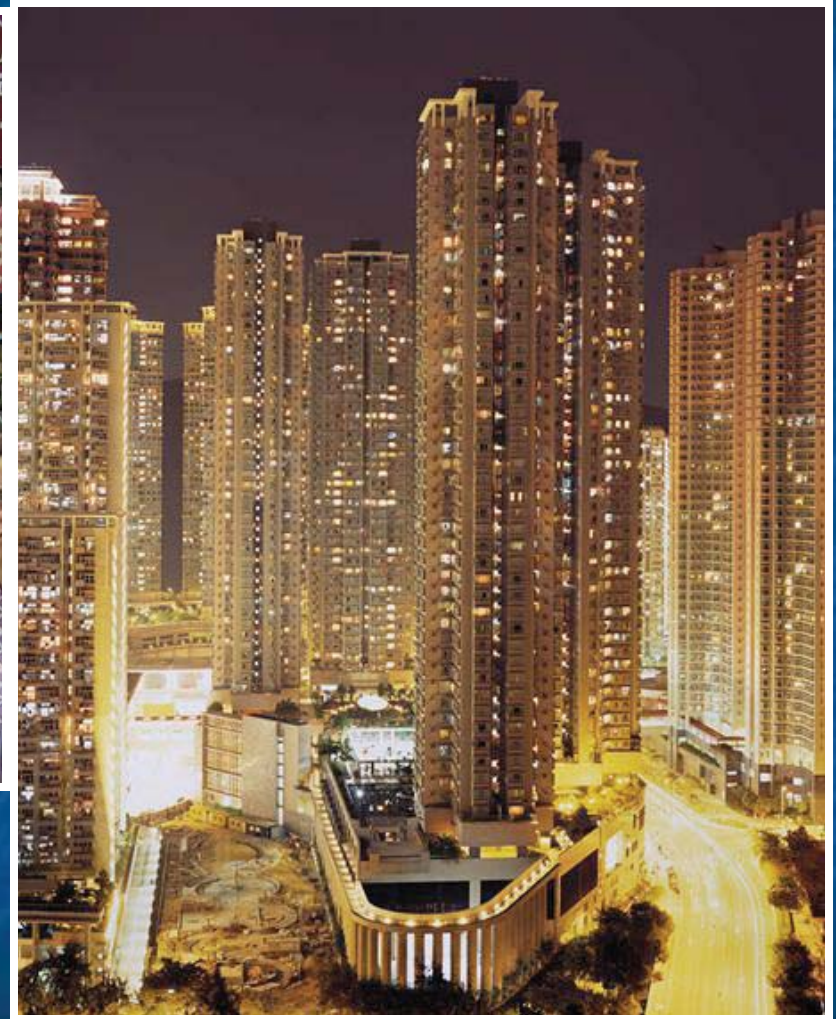


*Alpen Windows, University of Colorado*

# Limit Building Height?



*New York City during 2003 blackout*

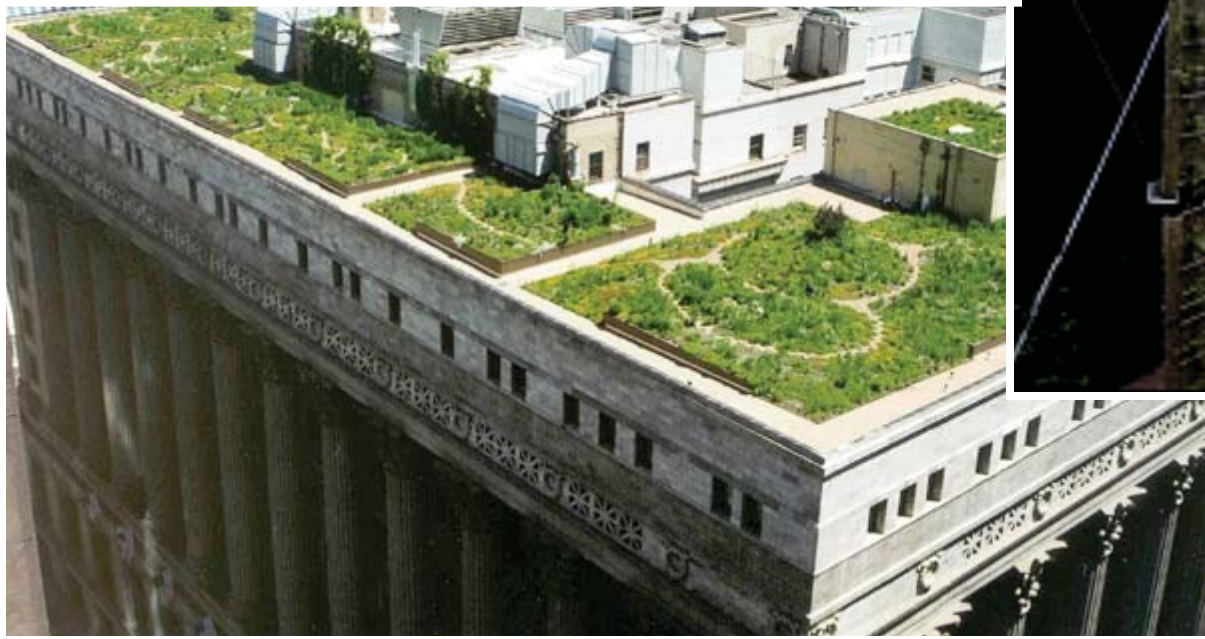


*Hong Kong - Wolf photo*

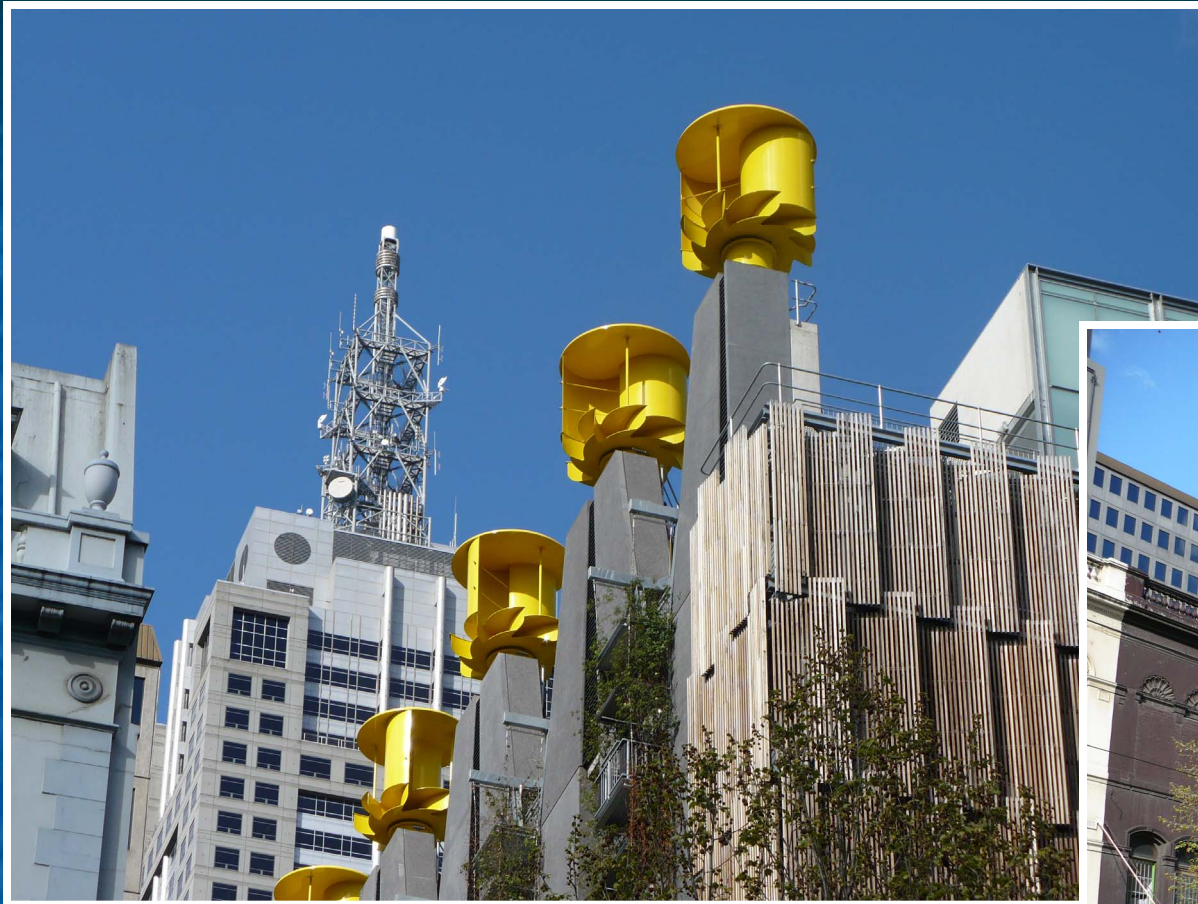


*Rainwater cisterns at the Chesapeake Bay Foundation headquarters*

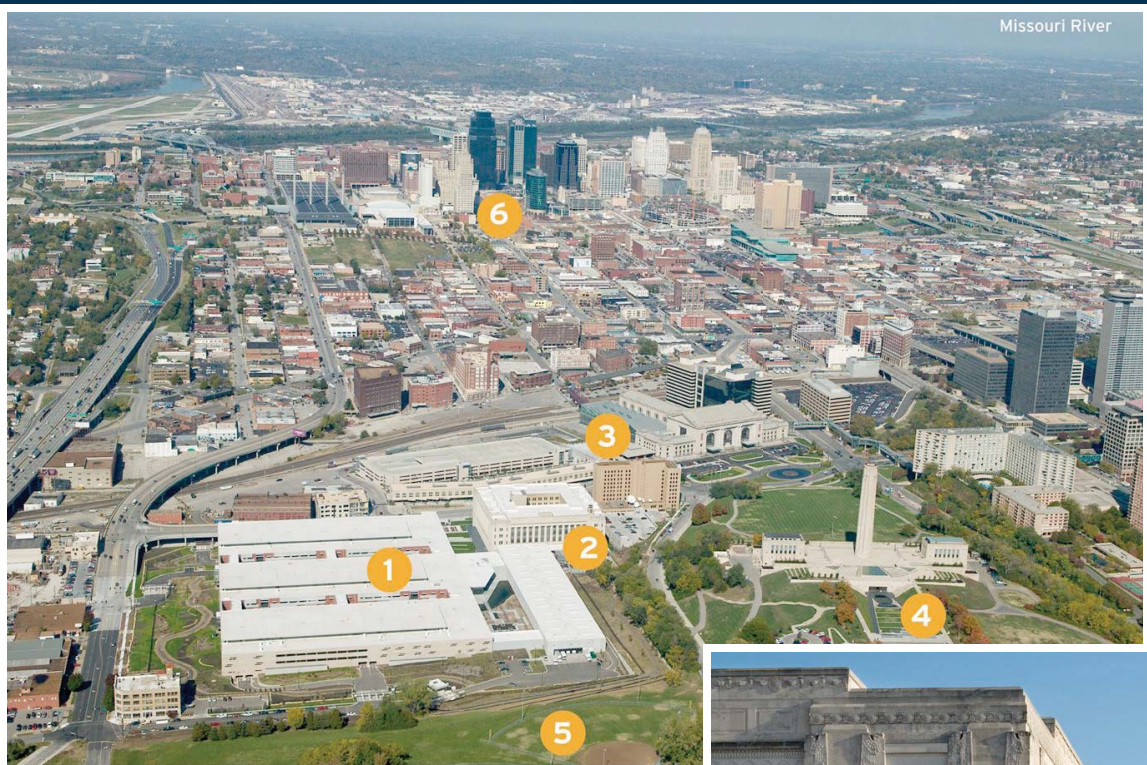








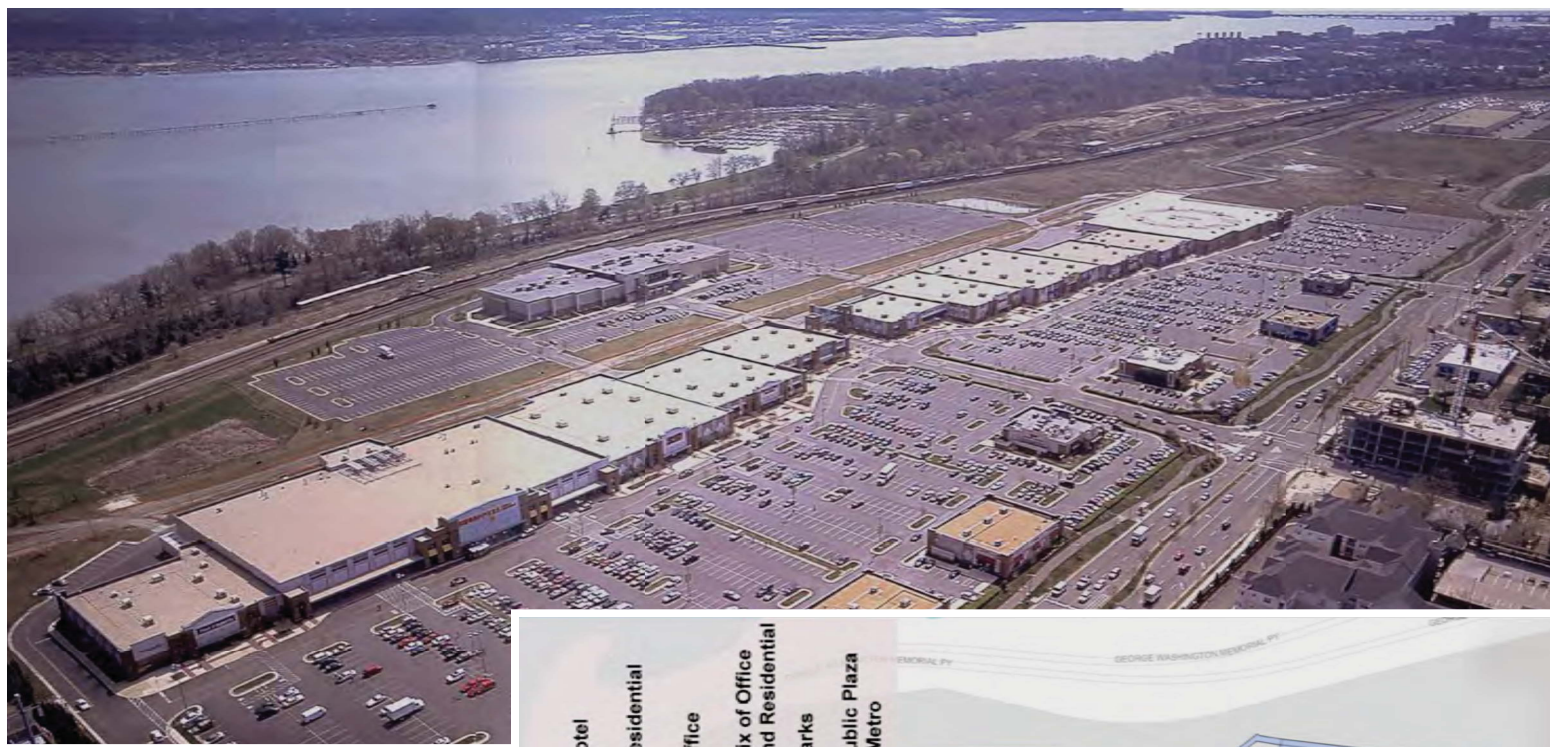
Missouri River



## SITE PLAN

- 1 IRS SERVICE CENTER
- 2 EXISTING POST OFFICE
- 3 UNION STATION
- 4 LIBERTY MEMORIAL
- 5 PENN VALLEY PARK
- 6 CENTRAL BUSINESS DISTRICT

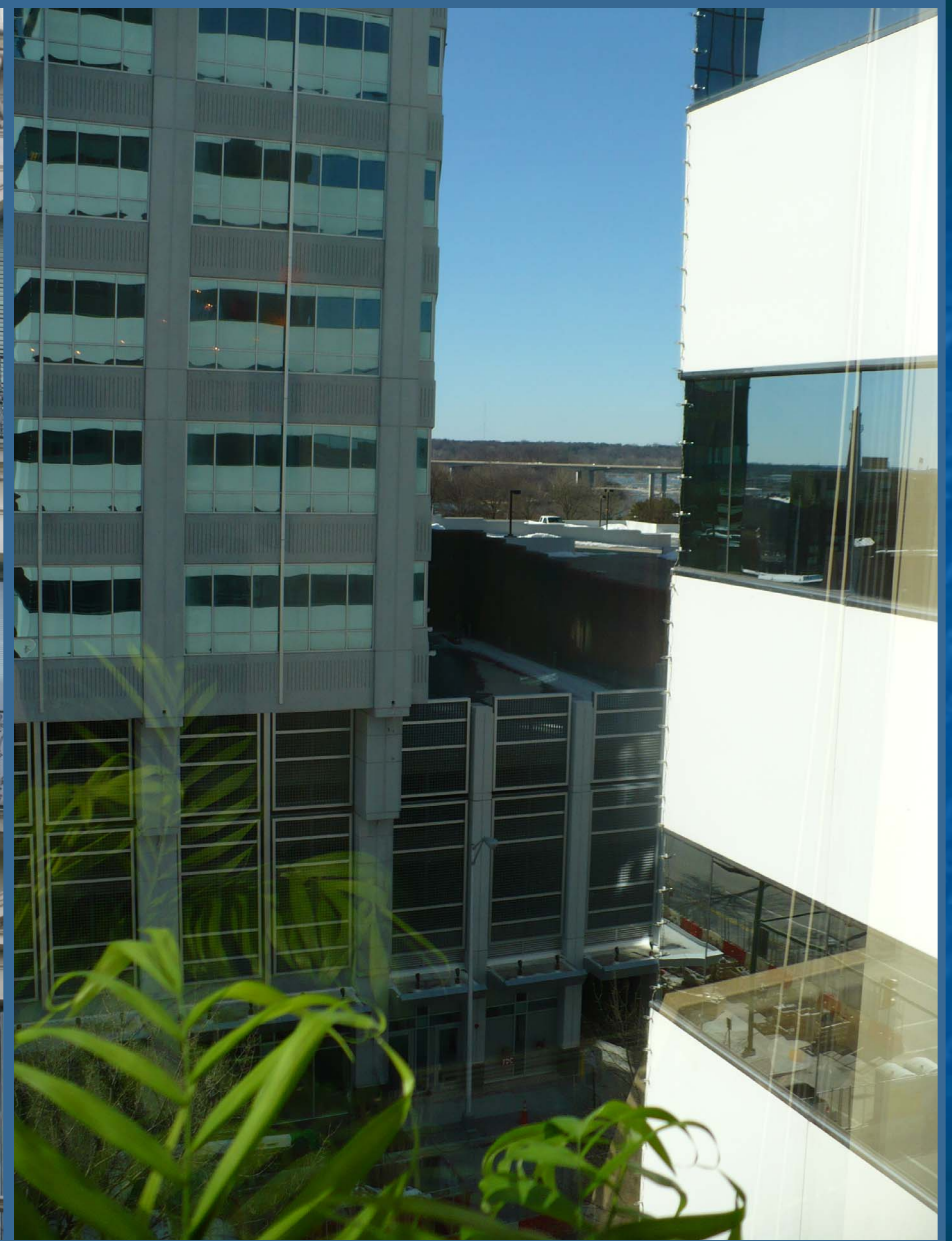




Source: North Potomac Yard Small Area Plan







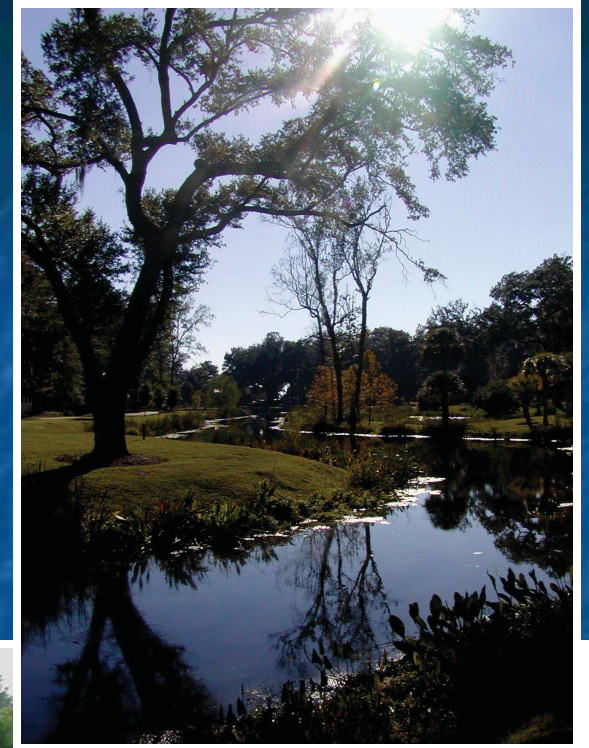




**We help localities  
make themselves  
more sustainable**



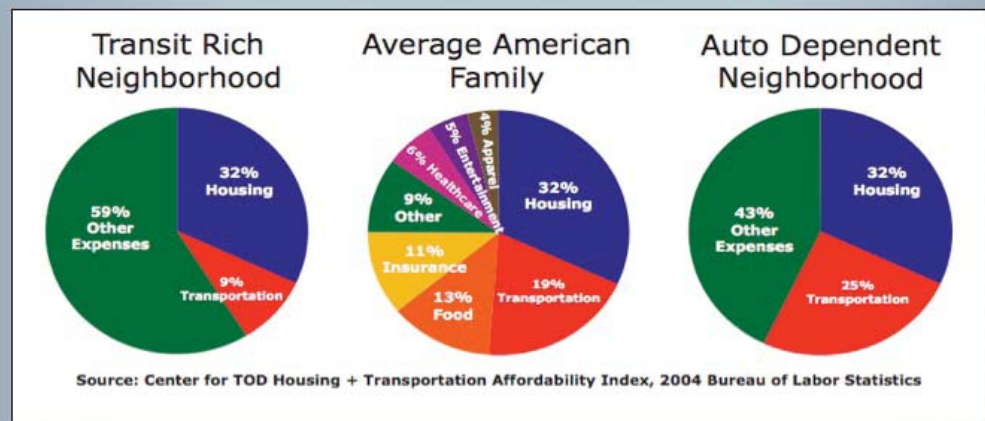




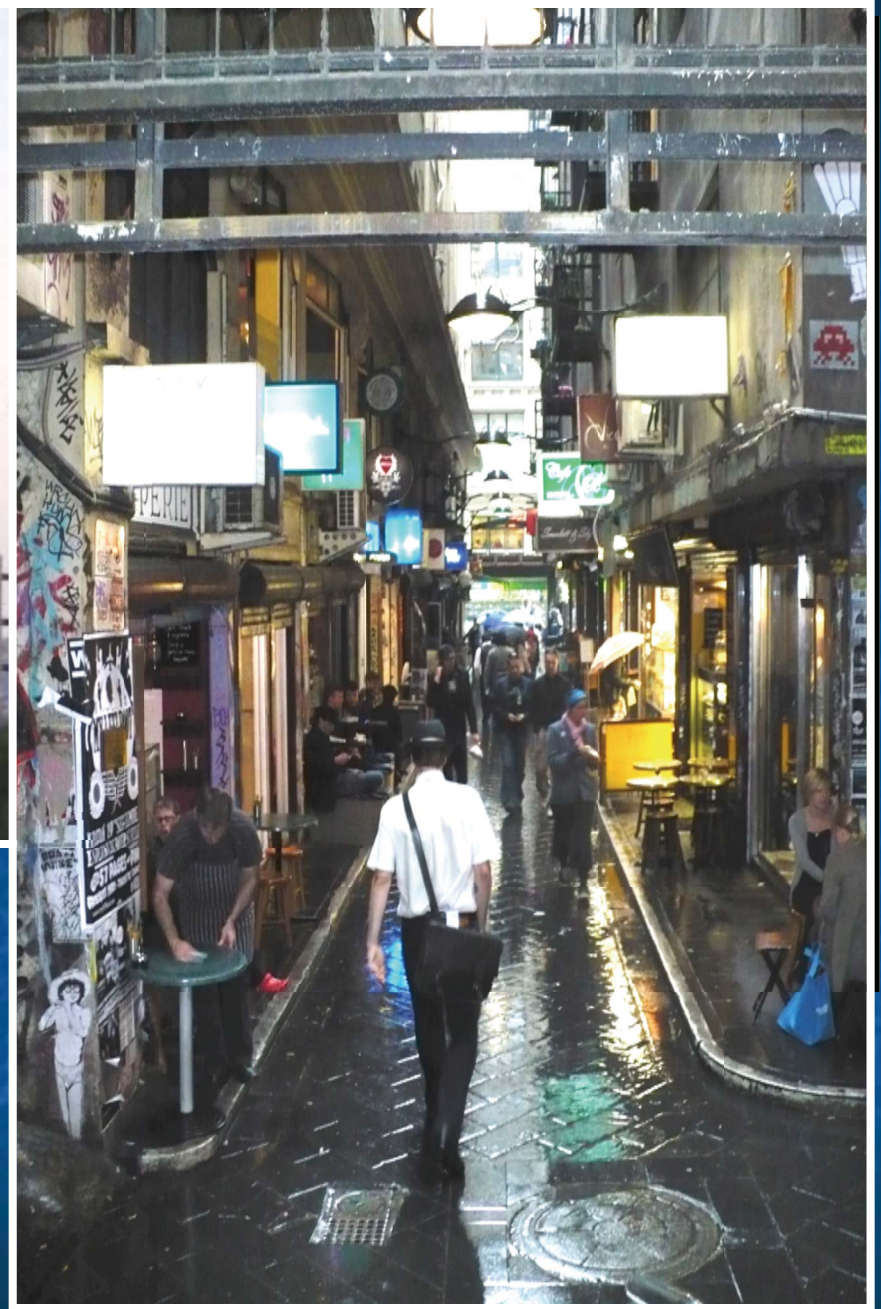




## Location Matters: Transportation is #2 Expense after Housing

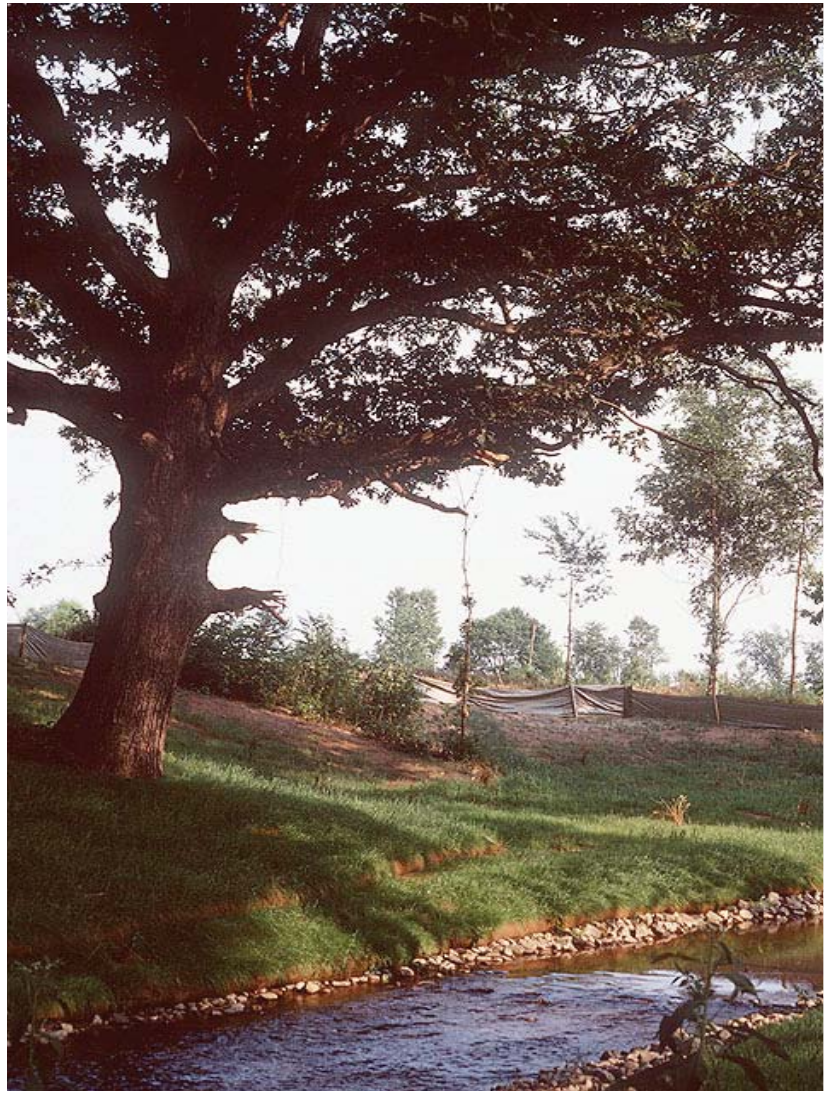
















 **Green Infrastructure & Buildings**

**Green Infrastructure as Neighborhood Amenities**



Image courtesy of Datner Architects/Grimshaw/Lee Weintraub Landscape



[TricycleGardens.org](http://TricycleGardens.org)



[TheMarketUmbrella.com](http://TheMarketUmbrella.com)





