

Collaboration around Climate Adaptation in the Great Lakes

January 30, 2015

New Partners for Smart Growth Conference

Ashlee Grace

Urban Adaptation Project Manager

Overview

- Context
- Defining Collaboration
- Lessons Learned



INTEGRATED ASSESSMENT CENTER
UNIVERSITY OF MICHIGAN



CLIMATE CENTER
UNIVERSITY OF MICHIGAN

GLISA
Great Lakes Integrated Sciences & Assessments



**UNIVERSITY OF
MICHIGAN
FACULTY**

APPROACH

RESEARCH &
CLIMATE DATA

GLAA-C

Great Lakes Adaptation Assessment for Cities

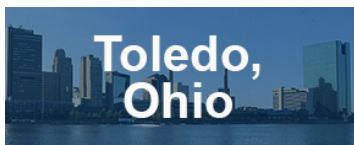
Urban Adaptation Project



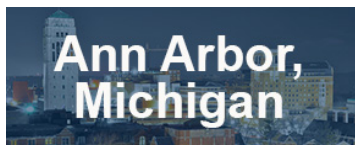
**Dayton,
Ohio**



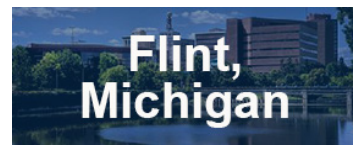
**Thunder Bay,
Ontario**



**Toledo,
Ohio**



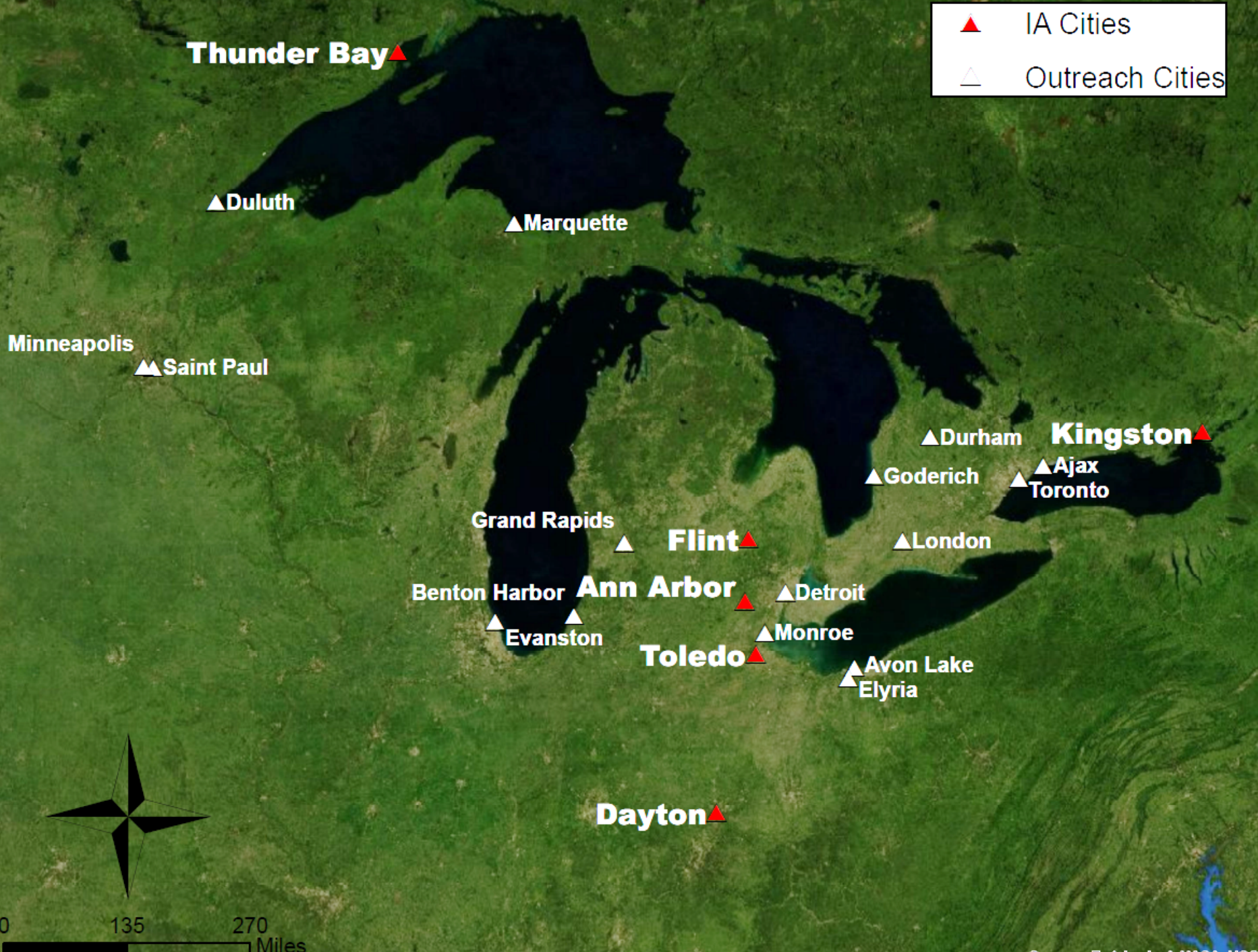
**Ann Arbor,
Michigan**



**Flint,
Michigan**



**Kingston,
Ontario**



Climate Change in the Great Lakes

- Extreme heat and precipitation
 - Heat waves
 - Flooding events
 - Water and air quality issues
- Growing season changing
 - Altered food networks and systems
- Different infrastructure issues at different times of the year
 - Freeze-thaw
 - Rain on frozen ground
- Changing infrastructure and industry (from cold to warm)



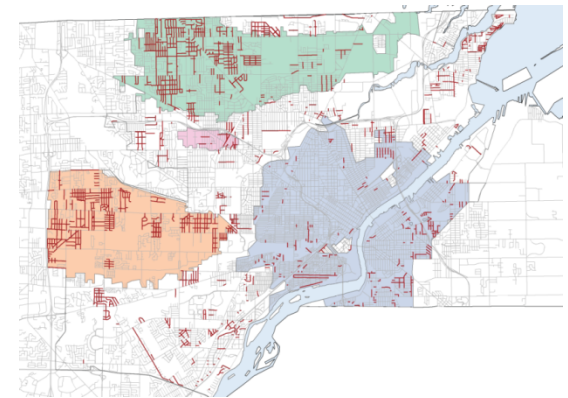
Our Adaptation Approach: Locally Relevant Data & Support

- Historical climate data and trends + locally relevant projections
- Vulnerability assessments to prioritize needs and actions
- Resource and knowledge sharing at regional workshops and conferences
- Every city has different assets and challenges!



City Partners' Adaptation Initiatives

- Vulnerability and risk assessments
- Awareness and education campaigns
- Stormwater credit programs
- Inner-city wetland restoration
- New master plan with “green” zones
- Tree canopy plans
- Climate action plans
- Emergency response mapping



Collaboration is Critical



Within City: Staff

- What is already taking place
- Overlapping goals
- Where can interdepartmental collaboration and resource sharing occur



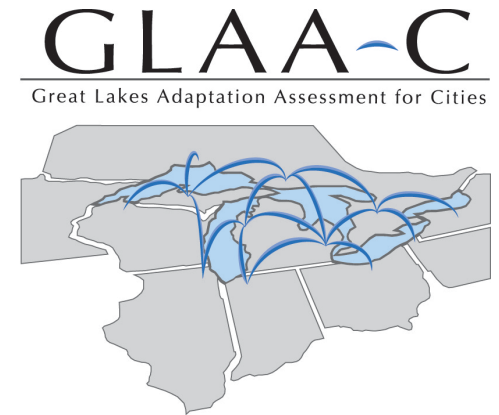
Within City: Local Partners

- What is already taking place
- Overlapping goals
- Where can collaboration and resource sharing occur



Among Cities

- Political cover
- Creates a road map for action
- Builds a network of local colleagues

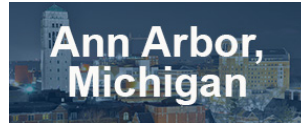


With Universities, Federal Partners, and Various Organizations



NOAA

Various Grants



- Wright State Univ.
- Univ. of Dayton
- Neighborhood Leadership Instit.
- Dayton Airport

- American Rivers
- TMACOG
- EPA
- NOAA

- Ecology Center
- MI Green Communities
- Urban Sustainability Directors Network

- HUD
- Ruth Mott Foundation
- Friends of Max Brandon Park
- Genesee County Land Bank

- Royal Bank of Canada
- KFL&A Public Health

- ON Ministry of the Environ.
- EcoSuperior
- ICLEI

Lessons Learned

- **In-person meetings and workshops are essential**
 - Good organization, focus, and appropriate topics ensure time is productive and well spent, strengthening overall buy-in
- **Collaborations build capital and credibility**
 - Critical in sustaining efforts, especially when city leadership changes occur and/or pursuing further support
- **Collaborations require glue to keep them together**
 - A specific person, team, or organization that is responsible with supporting the collaboration keeps the momentum going
- **Successful collaborations generally aren't forced**
 - Clear value for all participants
 - Expected that all contribute as well as take

Thank You!

Ashlee Grace

Urban Adaptation Project Manager

ashjen@umich.edu



GLAA-C & the Graham Sustainability Institute



What We Mean When We Say Collaboration