

# The Atlas Marketplace

*Navigate to your Future City*



Ellory Monks  
ellory@the-atlas.com  
858-432-2781

We envision cities that are safe, smart and sustainable because they can easily collaborate with innovators to solve pressing urban challenges.

***It's like Houzz, for cities.***

The Atlas Marketplace connects public officials with each other, and the innovative companies they need to redesign their cities.



Elle Hempen, Co-Founder &  
Chief Executive Officer

- 8+ years in strategy, operations, and business development



Hon. Michael Nutter,  
Advisor

- 22+ years of work with cities, including as a 2-term Mayor of Philadelphia



Ellory Monks, Co-Founder &  
Chief Value Officer

- 5+ years in city engagement, infrastructure design, and data analytics



Hon. RJ Berry,  
Advisor

- 30+ years in infrastructure innovation, including as a 2-term Mayor of Albuquerque



Dr. Shalini Vajjhala,  
Co-Founder & Advisor

- 10+ years in infrastructure design, finance and procurement



# NAVIGATE TO YOUR FUTURE CITY

Learn from your local government officials & staff about the smart, safe, and sustainable solutions working in their communities

CITIES: JOIN FOR FREE!



ADD SOLUTION



GET INSPIRED



COMPARE CITIES



FIND VENDORS



BLOG

**Join the online community of public officials & innovators to replicate what's working in other communities.**

*(and steer clear of what's not!)*



## CHALLENGES

### Flooding (188) ▾

- Coastal & Tidal Flooding (101)
- Hurricanes & Severe Storms (89)
- Sea Level Rise (88)
- Stormwater Management (114)

### Chronic Stressors (125) ▾

- Economic Inequality (0)
- Water Supply & Drought (33)
- Food Insecurity (13)
- Infectious Disease (2)
- Ecosystem Degradation (68)

### Basic Services (121) ▾

- Transportation, Mobility, Access (31)
- Housing & Affordable Housing (4)
- Waste Management (13)
- WiFi, Broadband, Digital Inclusion (3)
- Water Quality (86)
- Public Safety (12)
- Air Quality, Health, Noise (5)

### CO<sub>2</sub> Reduction (76) ▸

### Economic Development (48) ▸

### Natural Disasters (48) ▸

# Solutions

188 Infrastructure Projects  Include tools and services

Sort by: Newest Added ▾



YOUR SELECTION:  Project Type: Flooding  Project Type: Coastal & Tidal Flooding  Project Type: Hurricanes & Severe Storms  
 Project Type: Sea Level Rise  Project Type: Stormwater Management



Reducing CSOs with CMAC Technology in Philadelphia



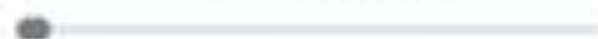
Feasibility & Community Engagement to Get Funding for Rebuild by Design Hudson River



## Management Facility + Green Space Project

### BUDGET

\$ 0 - \$ 7000000000



USD

### FUNDING OR FINANCING TYPE

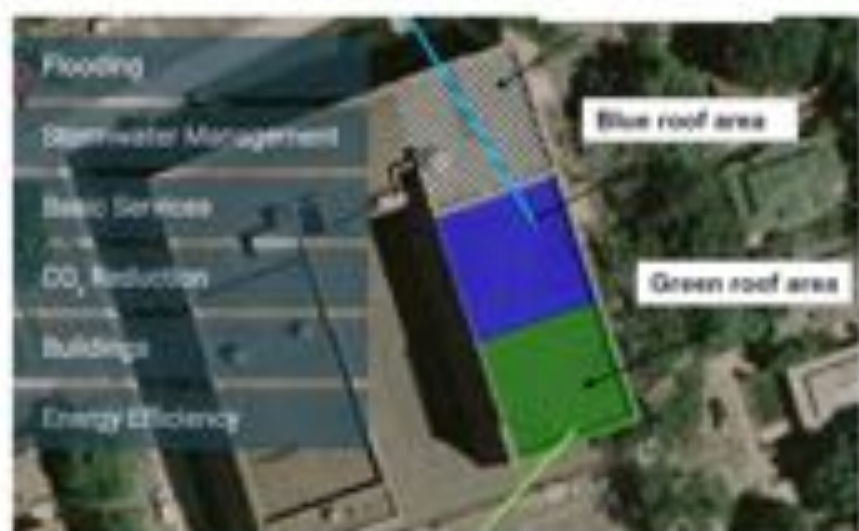
- Grants (29) <>
  - Federal grants (9)
  - State and local grants (8)
  - Philanthropic grants (8)
- Public-Private Partnership (19)
- General Fund/Existing Public Funds (17)
- Bonds & Loans (16) >
- Taxes & User Fees (16) >
- Performance Contracting (7) >
- Innovative Finance (6) >



Lloyd Estates Drainage Improvements



Stormwater Harvest & Direct Use Demonstration





# Reducing CSOs with CMAC Technology



Philadelphia, PA, United States



**At a Glance:** Philadelphia Water Department installed continuous monitoring and adaptive control (CMAC) technology in stormwater retention basin to control runoff in real-time and reduce flooding.

**The challenges this project addresses are: Flooding, Stormwater Management, Basic Services, Water Quality**

Philadelphia is one of over 770 U.S. municipalities with combined sewer systems, the overflows from which represent a major source of water pollution. Nearly 60 percent of the City's sewers are combined, with more than 11 billion gallons of stormwater and its pollutants discharged into local waterways each year. To address this issue, the Philadelphia Water Department (PWD) has implemented "Green City, Clean Waters", a comprehensive plan focused on reducing stormwater pollution to the City's sewers with investments in both public green infrastructure projects and private partnerships. PWD, along with the Philadelphia Industrial Development Corporation (PIDC), incentivizes private property owners to implement stormwater management solutions through the Stormwater Management Incentives Program ("SMIP").

**Philadelphia Water Department used Opti CMAC to address the challenge(s).**

In November 2016, Opti installed continuous monitoring and adaptive control (CMAC) technology on an underperforming, commercially-owned stormwater retention basin collecting runoff from 4.75 impervious acres in the City's combined sewer area. The project was wholly funded through the City's SMIP grant program. During the first 6 months of operation, the site received 20 inches of rainfall. Opti CMAC prevented discharge of 2.7 million gallons into the City's combined sewer during the storms, which accounted for 98.8 percent of total runoff on the property.



Project Contact:  
OptiRTC, Inc.

CONTACT COMPANY

CONTACT CITY

GO TO RFP



project was wholly funded through the City's SWMP grant program. During the first 6 months of operation, the site received 20 inches of rainfall. Opti CMAC prevented discharge of 2.7 million gallons into the City's combined sewer during the storms, which accounted for 98.8 percent of total runoff on the property.

#### Outcomes:

- 1 In 6 months, prevented discharge of 2.7 million gallons into the City's combined sewer, which accounted for 98.8 percent of total runoff on the property.
- 2 Because of avoided overflows, water quality improved.

**Local Government Champion:** Philadelphia Water Department

**Something Unique:** Paid for by grants from Philadelphia's Stormwater Management Incentives Program

**Who should consider?** Cities and utilities under consent decrees or otherwise dealing with combined sewer overflows.

Project Type:	Project Technology	Challenge Addressed:	Flooding Stormwater Manage... Basic Services Water Quality
Cost:	150 Thousand USD		
Funding/ Financing:	General Fund/Existing ... Grants Bonds & Loans Taxes & User Fees	Motivation:	Smart city Resilient city
		Keywords:	Stormwater CSOs Commercial Partnerships







## Leslie Knope

[MY ATLAS](#)[MY PROJECTS](#)[FAVORITES](#)[MESSAGES](#)[MY RFPs](#)[RFP SEARCH](#)[FIND PEERS](#)

### All Projects

[+ ADD A NEW PROJECT](#)

Green Infrastructure, Workforce Training & Education

# 55+ Partner Local Governments

Planning Directors, Public Works Directors, Water Resource Managers, Chief Engineers, Chief Sustainability Officers, Chief Resilience Officers, Chief Innovation Officers



El Paso, TX



Miami Dade County, FL



Cleveland, OH



San Jose, CA



Burlington, VT



Atlanta, GA



San Diego, CA



Anchorage, AK

## Atlanta, GA

Working with the Director of Atlanta's Smart City Program, as well as with the Chief of Innovation for Watershed Management, to source new & exciting partners for key city government initiatives like smart metering.


## El Paso, TX

Working with Capital Improvement Department to explore financing alternatives for energy efficiency projects like LED upgrades; Facilitating new relationships with potential private sector partners on drought and urban agriculture.

## Mobile, AL

Working with the Director of Planning and Development to source new technology partners that can help the city improve citizen engagement for the City's planned infrastructure improvements.

Navigate to your Future City  
**The**  
**Atlas Marketplace**  
[www.the-atlas.com](http://www.the-atlas.com)



Ellory Monks  
[ellory@the-atlas.com](mailto:ellory@the-atlas.com)  
858-432-2781