

CALIFORNIA CLIMATE STRATEGY

An Integrated Plan for Addressing Climate Change



VISION

**Reducing Greenhouse Gas Emissions
to 40% Below 1990 Levels by 2030**

GOALS



**50%
renewable
electricity**



**50%
reduction
in petroleum
use in vehicles**



**Double energy
efficiency savings
at existing buildings**



**Carbon
sequestration
in the land base**



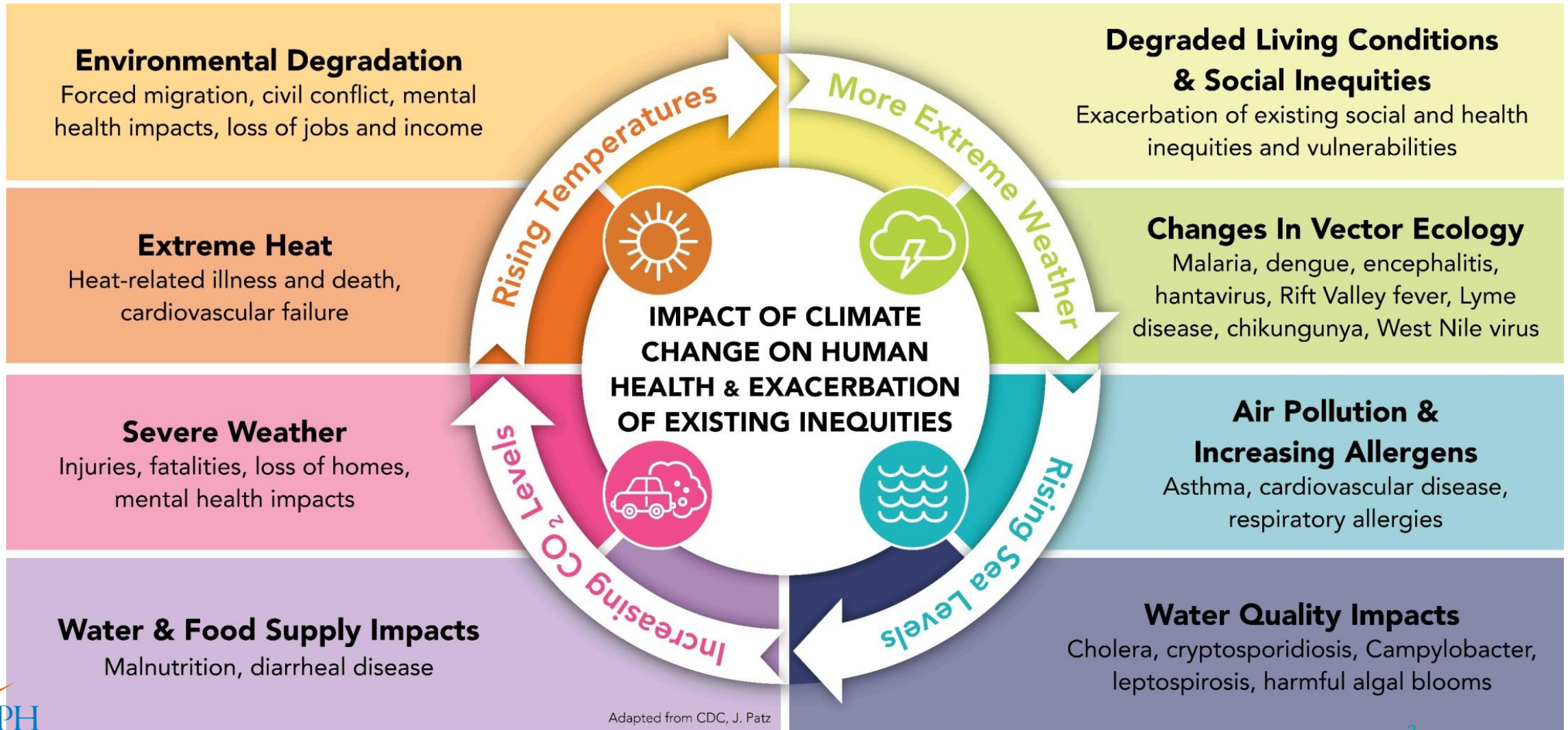
**Reduce
short-lived
climate pollutants**



**Safeguard
California**

Climate Change & Health

Human Health Impacts of Climate Change



Cap-and-Trade Program

- Limits or “caps” on emissions
- Emissions permits “allowances” sold at quarterly auctions
- Proceeds from the sale of allowances
- “California Climate Investments” are coordinated investments that further State’s climate goals and deliver economic, environmental and public health co-benefits.





Affordable Housing

Urban Greening

Sidewalks

Expansion of Bus Routes

Bus Shelters

Bike Lanes

Pedestrian Pathways

Grocery Store

CalEnviroScreen

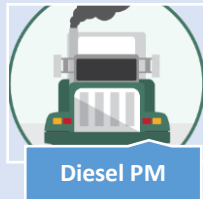
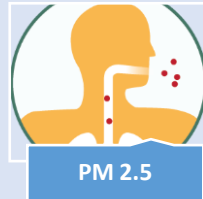


- Science-based tool
- Uses **19 indicators** of environmental, health and socioeconomic conditions
- Evaluates multiple **pollution** sources
- While accounting for a community's **vulnerability** to pollution

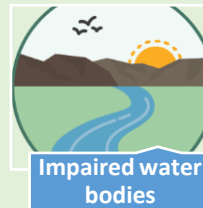
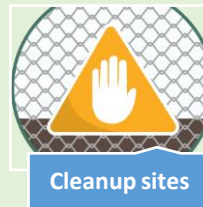
Pollution Burden

Population Characteristics

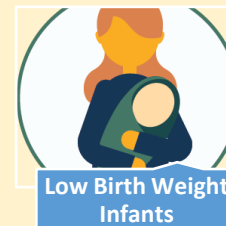
Exposures



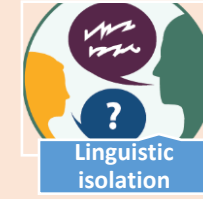
Environmental Effects



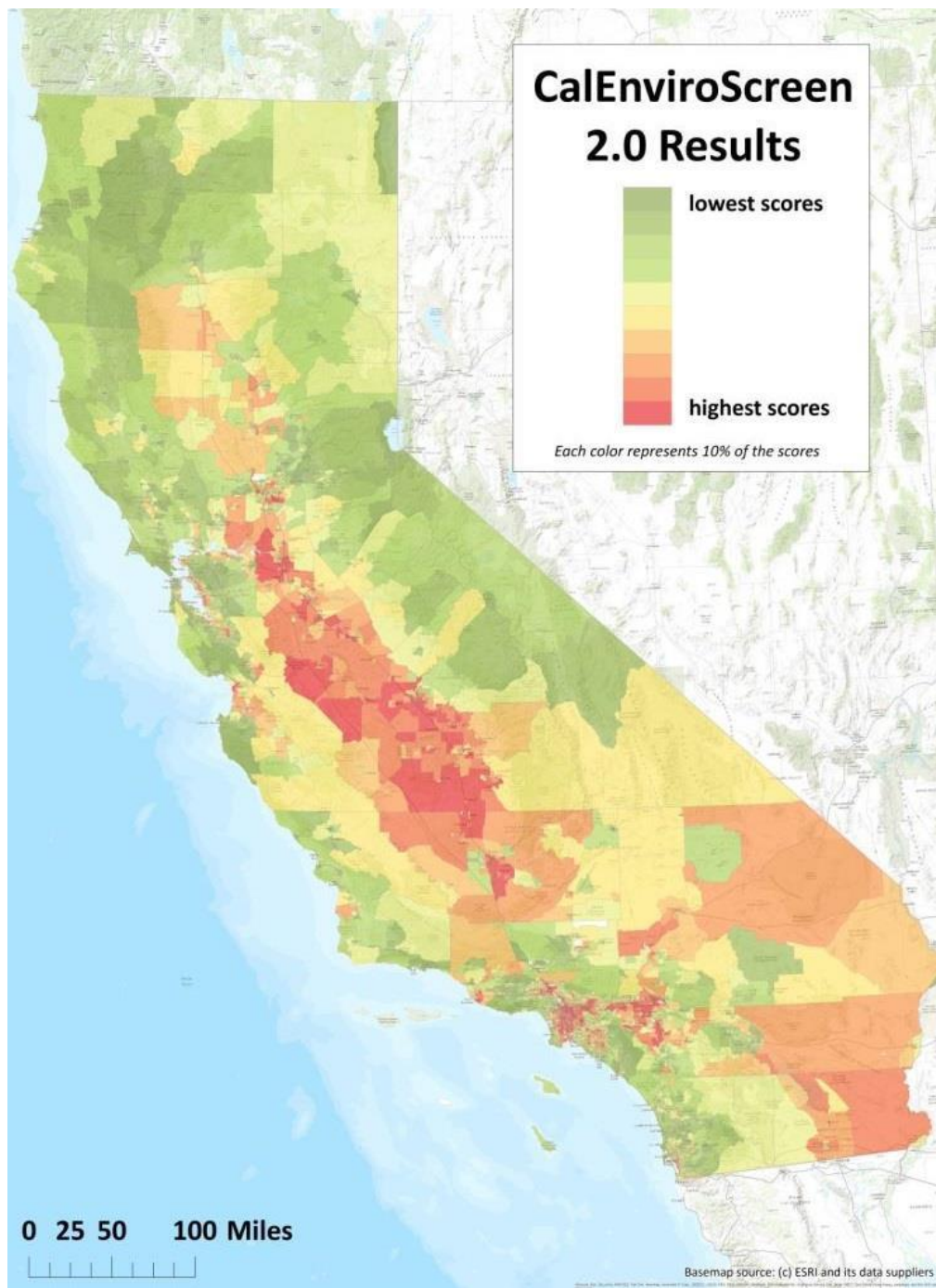
Sensitive Populations



Socioeconomic Factors



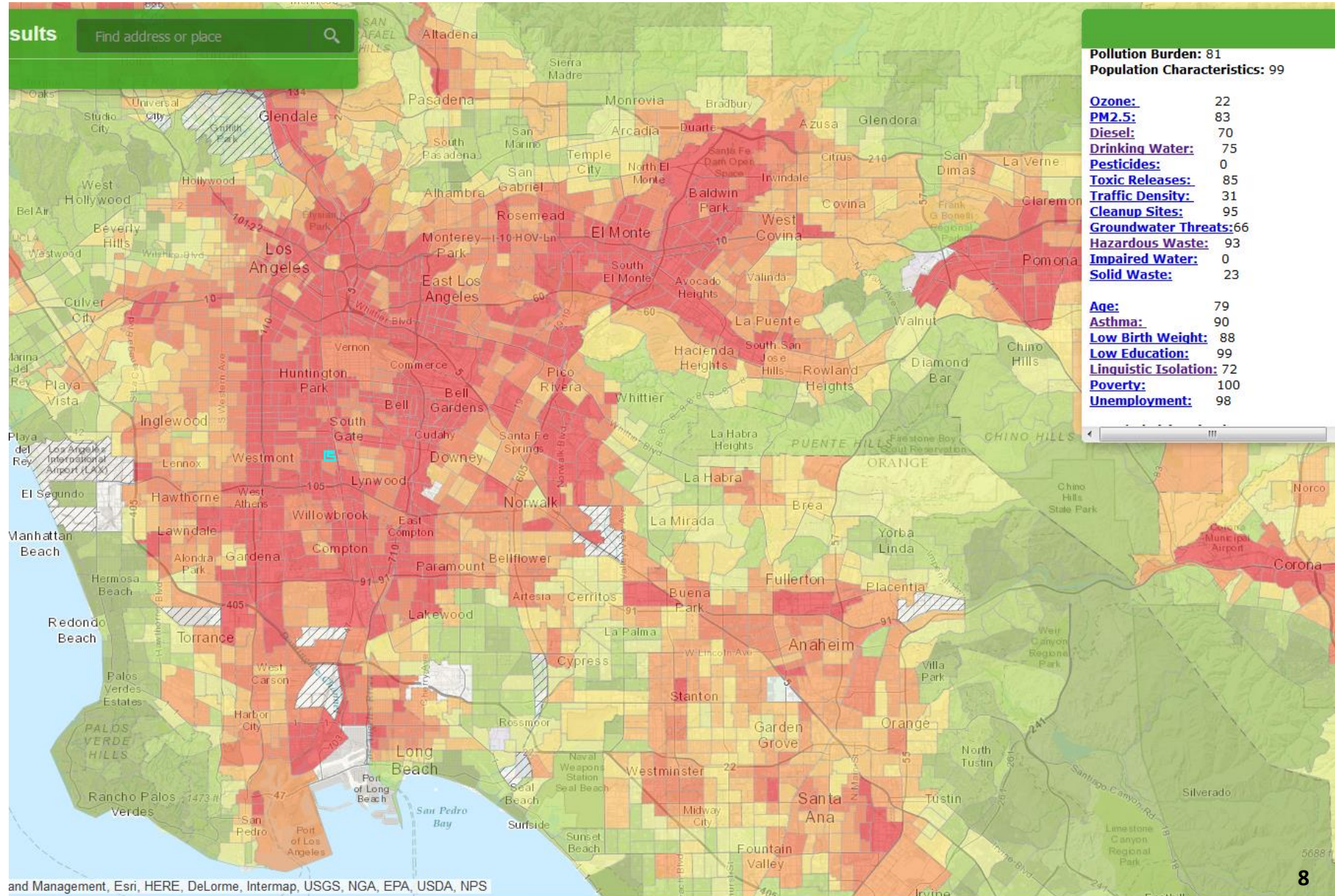
CalEnviroScreen



CALENVIROSCREEN
RESULTS

STATEWIDE

LOS ANGELES





Fresno Awarded \$140m

Transformative Climate Communities Program
THIRD REVISION, DRAFT SCOPING GUIDELINES



CALIFORNIA STRATEGIC
GROWTH COUNCIL



JUNE 2017

5 TRANSFORMATIVE REQUIREMENTS

1. Track + Monitor Emissions Reductions
2. Avoid Displacement of Existing Households + Small Businesses
3. Ensure Community Engagement
4. Leverage Funding
5. Climate Adaptation and Resiliency

Transformation In Action

Transformative Climate Communities



CALIFORNIA
STRATEGIC
GROWTH
COUNCIL

