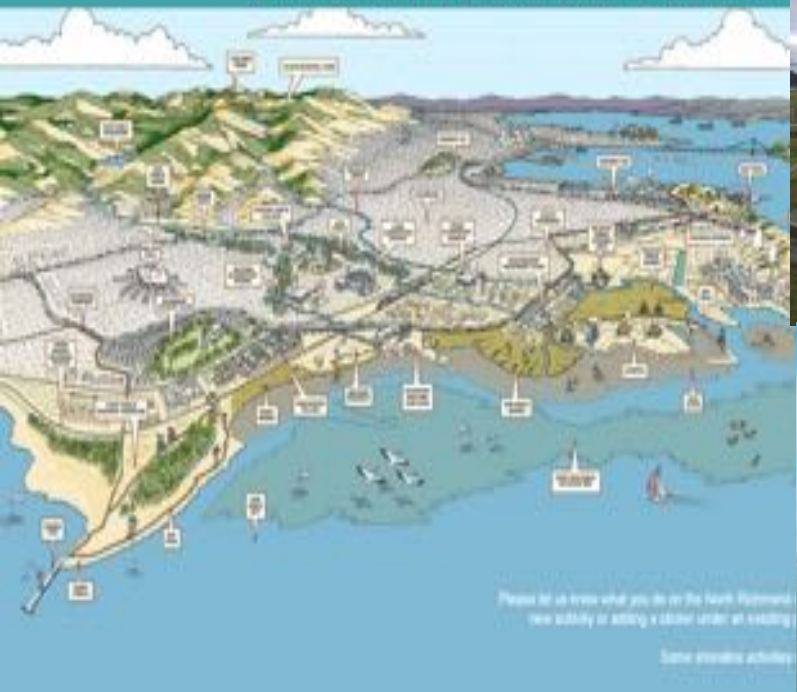


What do you do on the North Richmond Shoreline?



Please let us know what you do on the North Richmond Shoreline by adding a sticker under an existing callout or adding a sticker under an existing callout.

Some example activities:



Northern Richmond Shoreline Community Vision Process New Partners for Smart Growth Conference



SAN FRANCISCO



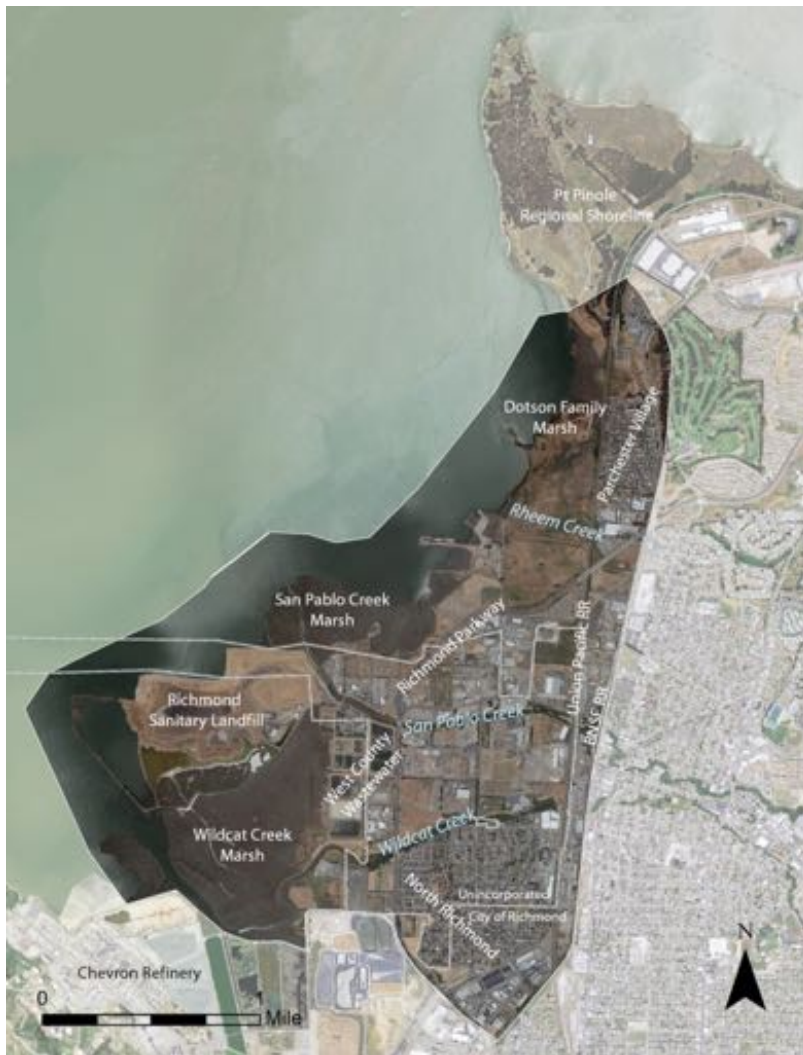


Community Vision Study Area

Point Pinole to Wildcat Creek Marsh, including Unincorporated areas of Contra Costa County and City of Richmond

The study area is in the shoreline **transition zone**

- Zone along the shoreline between tidal wetlands and former marsh/low upland slopes
- Connection between Bay and watersheds
- Corridors of movement for wildlife, important habitat and protection for sensitive species.
- Supports human activities and benefits such as housing, recreation, transportation, commerce and industry, flood protection, public access, carbon sequestration.



North Richmond Community Shoreline Vision Project

Overall Goal: Develop a community-informed Vision for climate-ready adaptations along the North Richmond shoreline with a focus on the upland transition zone, environmental justice and resiliency.

Transition Zone Planning

Helps planners, scientists and community members to grapple with and understand complex issues within a dynamic shoreline area

Ecosystem protection and services: wildlife movement, habitat, etc

Community values for the shoreline: flood protection, recreation, etc

Climate Change adaptation, identifying multi-benefit approaches



North Richmond Community Shoreline Vision Project

The findings of the Vision were informed by:

- Community outreach
- Resident survey
- Shoreline analysis (outer edge of transition zone)
- Analysis of existing planning/visioning efforts

Coastal flooding at king tide (OCOF 2016)

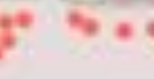
Sea level rise scenario







The North Queensland Strategy needs more (1.4 more jobs North Queensland currently has)



Restoration Potential



Major Restoration Opportunity



Existing and Restored Tidal Marsh



Urban Greening and Community Uses within the Transition Zone



Near Term Opportunities

- 1 Horizontal Levee and Interpretive Center at West County Wastewater District.
- 2 Interpretive Center at Point Pinole Regional Shoreline
- 3 Bay Trail Gap Closures and Richmond Parkway Overpass on Wildcat Creek Trail
 - 3a. Atlas Road to the Richmond border
 - 3b. Richmond Parkway to Goodrick Avenue
 - 3c. San Pablo Creek Southern Levee
 - 3d. Richmond Parkway Overpass at Wildcat Creek Trail
- 4 Giant Marsh Living Shorelines Project
- 5 Wildcat Creek Improvements (Fish Ladder and Sediment Basin)
- 6 Fred Jackson First Mile, Last Mile Green Street / Watershed Connections Project
- 7 Rheem Creek Realignment through Dotson Family Marsh



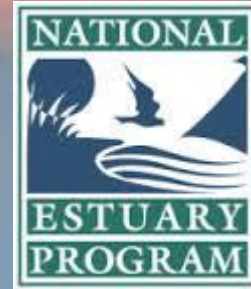
0 .25 .50 .75 1 MILE

NORTH



Questions?

Thanks to our Funders EPA Climate Ready Estuaries & National Estuary Program



Heidi Nutters
Environmental Planner
San Francisco Estuary Partnership
heidi.nutters@sfestuary.org
(510) 622-2499